



Haritarium

Family Code: 35

Species code: 7 - 15A

Naoroji Godrej Centre for Plant Research

Ceropegia huberi Ansari

Botanical name: *Ceropegia huberi* Ansari

Vernacular name: Kharpudi

Family : Asclepiadaceae

Threatened category: Vulnerable (Nair and Sastry, 1987), Endangered (Mishra and Singh, 2001), Critically endangered (Gaikwad & Yadav, 2004).

Key characters: Twining herb, membranous leaves, Flowers white, corolla tube glabrous within, lobes broadly ovate-cordate.

Description: Tuberous twining herbs; stems branched. Leaves petiolate, 2.0 – 6.8 X 1.5-2.8 cm, ovate to lanceolate, apex shallowly acuminate or acute, base rounded. Flowers white many, in umbellate cymes; peduncles and pedicels hairy; corolla inflated near base giving the shape of an umbrella (1.8cm wide), narrowed towards mouth; corona creamy yellow, biseriate, outer entire, 5-lobed, glabrous, inner conical-elongated, hairy, convergent at apex. Follicles 6 cm long.

Flowering and fruiting: August – October.

Distribution: Endemic to Maharashtra – Kolhapur , Pune, Ratnagiri, Satara.

Reported Localities: Kolhapur (Gagan bawda), Pune (Mulshi-Lonavala road), Ratnagiri(Amba Ghat), Satara (Vasota fort).

Ecology: Occurs on open gravelly slopes, preferably the crest regions that are directly exposed to Southwest monsoon rains and strong winds. Altitude ranges between 900-1200m.

Association: In association with grasses and *Euphorbia nivula*.



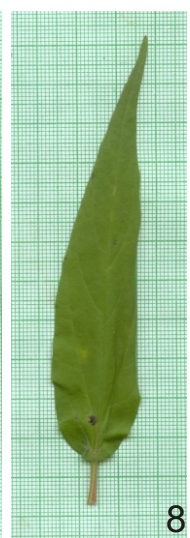
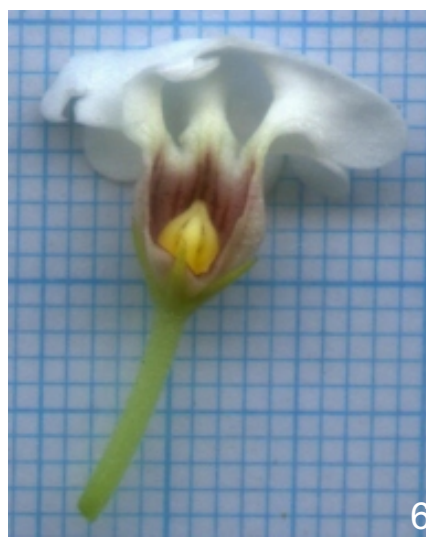
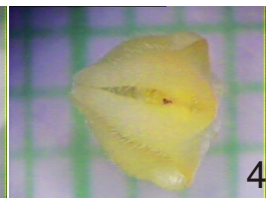
Haritarium

Family Code: 35

Species code: Z - 15B

Naoroji Godrej Centre for Plant Research

***Ceropegia huberi* Ansari**



1.Habit, 2. Flower, 3. Flower- dorsal side, 4. Corona, 5. Inflorescence, 6. Dissected flower, 7. Leaf- dorsal, 8. Leaf- Ventral view.



Haritarium

Family Code: 35

Species code: 7 - 15C

Naoroji Godrej Centre for Plant Research

***Ceropegia huberi* Ansari**





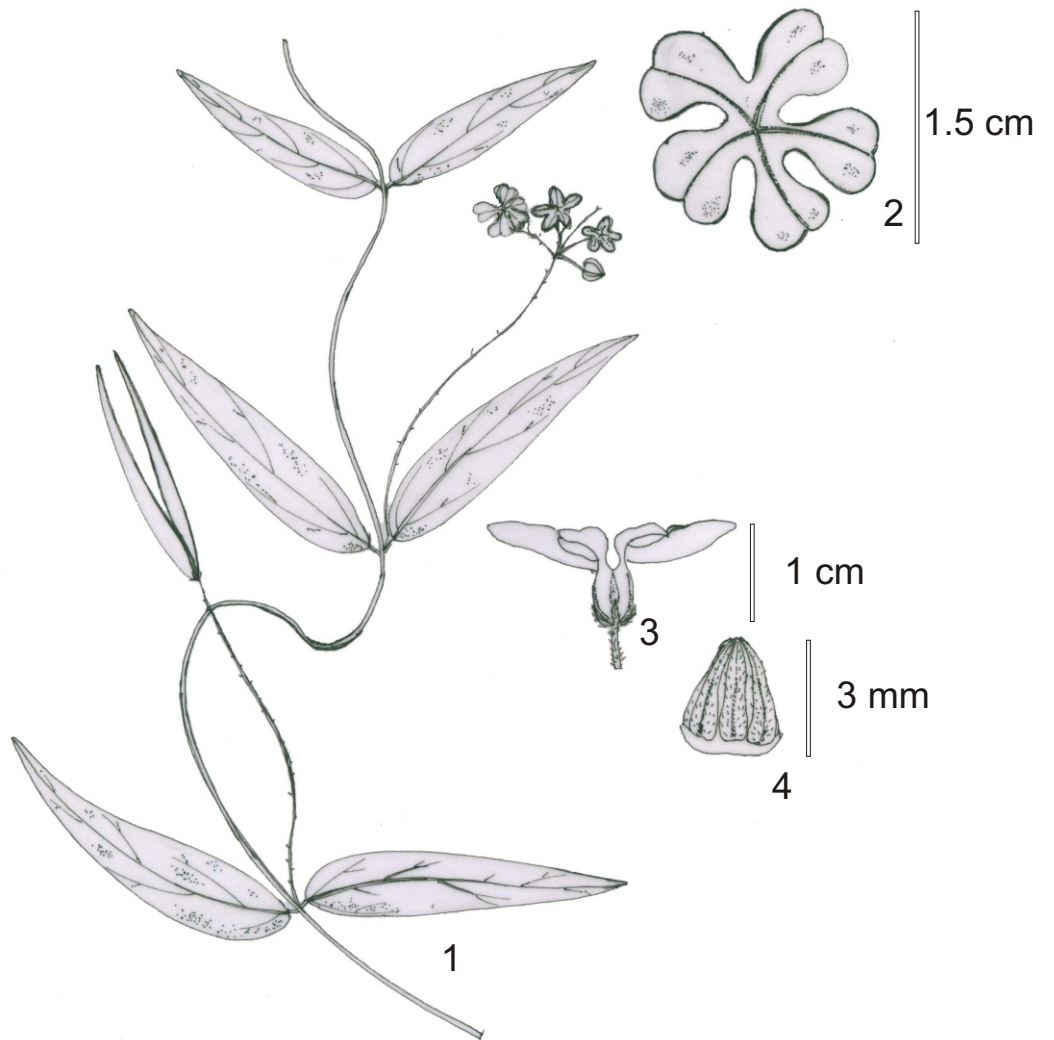
Haritarium

Family Code: 35

Species code: 7 - 15D

Naoroji Godrej Centre for Plant Research

***Ceropegia huberi* Ansari**



1.Habit, 2. Flower, 3. Dissected flower, 4. Corona.



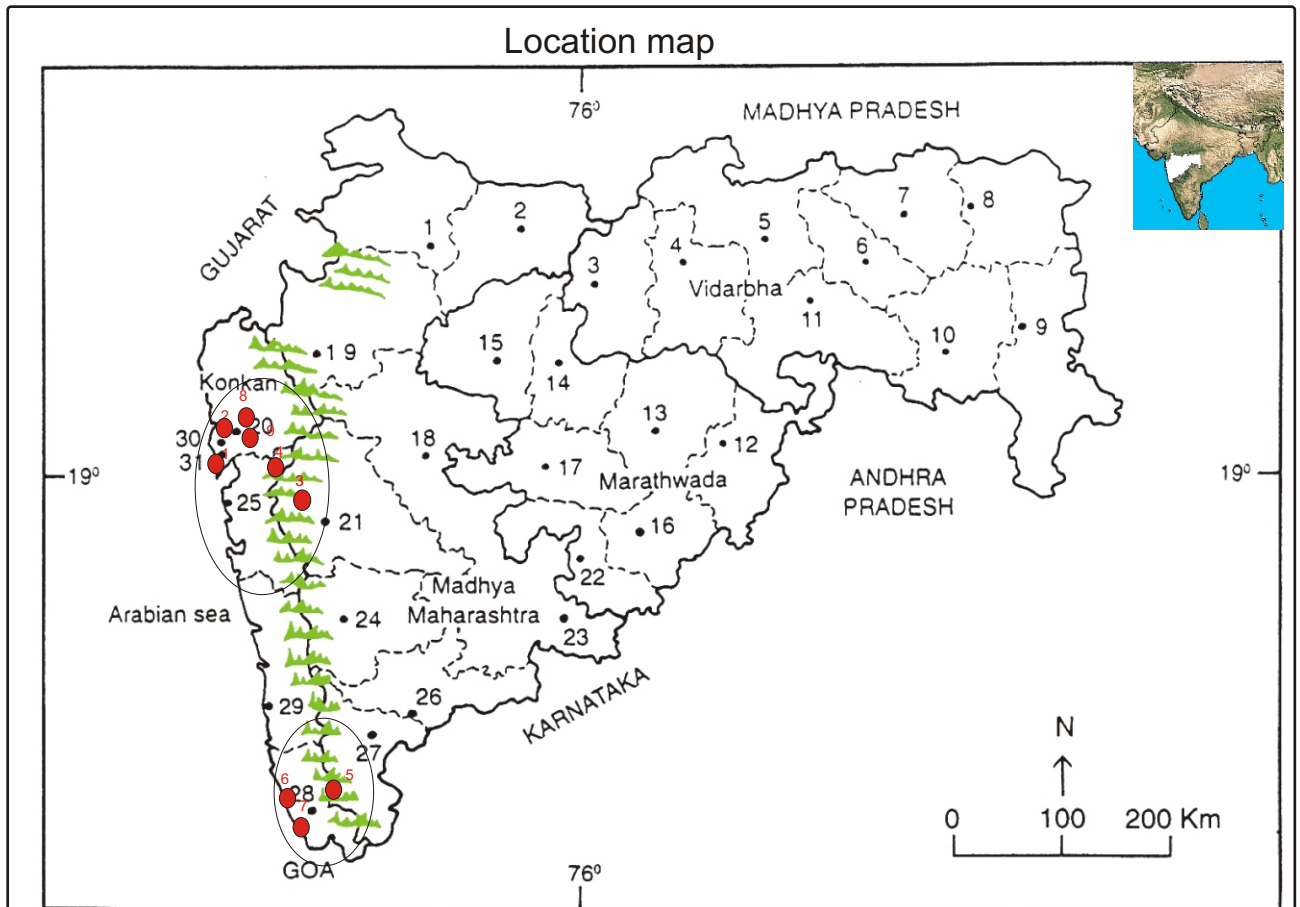
Haritarium

Family Code: 35

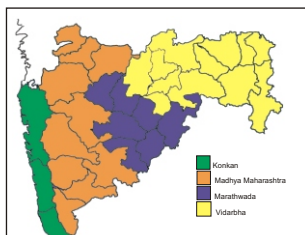
Species code: 7 - 15E

Naoroji Godrej Centre for Plant Research

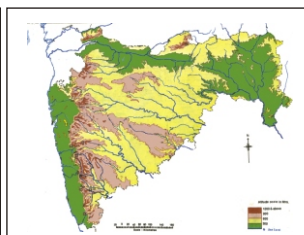
Ceropegia huberi Ansari



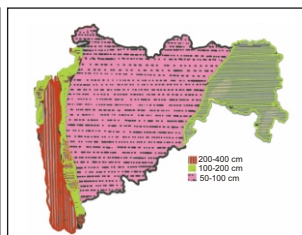
- 1.Dhule 2.Jalgaon 3. Buldhana 4.Akola 5.Amaravati 6.Wardha 7.Nagpur 8. Bhandara 9. Gadchiroli
 10. Chandrapur 11. Yavatmal 12. Nanded 13. Parbhani 14. Jalna 15. Aurangabad 16.Latur
 17. Beed 18. Ahmadnagar 19 Nashik 20. Thane 21. Pune 22. Osmanabad 23. Solapur 24.Satara
 25. Raigad 26.Sangli 27. Kolhapur 28. Sindhudurg 29. Ratnagiri 30.Mumbai 31.Greater Mumbai.



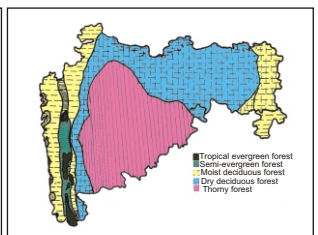
Geographical regions 1



Physical map 2



Rain fall map 3



Forest types 4

Localities- ●

Bombay(1-Borivli,2-Trombay),Pune(3-Khandala), Raigad(4-Matheran), Sindhugurg
 (5-Amboli,6-Malwan,7-Vengurla), Thane(8-Kasara,9-Mumbra)

Geographical distribution:

Latitude (DMS): Between 16^o - 18^o 31' N & Longitude (DMS): 73^o 50'-74^o.5' E.



Haritarium

Family Code: 35

Species code: 7 - 15F

Naoroji Godrej Centre for Plant Research

Ceropegia huberi Ansari

References:

- Ansari, M.Y.(1969): A new species of *Ceropegia* Linn.(Asclepiadaceae) from Western Ghats, Maharashtra. *Bull. Bot. Surv. India* ,**10**: 219-221.
- Ansari, M.Y.(1984): Asclepiadaceae: Genus- *Ceropegia*, **Fasc. Fl. India 16**:17.
- Gaikwad S.P. & S.R. Yadav(2004): in T. Pullaiah (ed.)Endemic flowering plant species of Maharashtra and their possible utilization; **Biodiversity in India**, Regancy publications, New Delhi:43.
- Jagtap, A. P. (1992).Revision of family Asclepiadaceae of India 2 vols. Ph.D.Thesis (ined.)
- Jagtap, A.P.& N.P.Singh(1999): Asclepiadaceae., **Fasc. Fl. India 24**: 25.
- Kulkarni, A.R. & A.N.Thite. Additions to the flora of Kolhapur District. *J. Bombay nat. Hist. Soc.*, **74** (suppl.): 600.
- Mishra D.K. & N.P. Singh (2001) :Endemic and Threatened Flowering Plants of Maharashtra, B.S.I., Calcutta: 226.
- Nayar M.P. & A.R.K. Sastry (1987): Red Data book of Indian Plants. Vol.I. B.S.I. Calcutta: 58
- Raghavan, R. S. and N.P. Singh (1983): in S.K. Jain & A.R.K. Sastry (eds.) *Plant. Cons. Bull.*, Vol. **3**: 6.
- Singh N.P. & S. Karthikeyan (2000):(eds), **Flora of Maharashtra state, Dicotyledones**.Vol. **2**: . B.S.I., Calcutta:351.
- Tetali, *et al.* (2000): **Endemic Plants of India (A Status Report of Maharashtra State)**. Naoroji Godrej Centre for Plant Research, Shirwal: 32.