



Haritarium

Family Code: 35

Species code: 7 - 14A

Naoroji Godrej Centre for Plant Research

***Ceropegia vincaefolia* Hook.**

Botanical name: *Ceropegia vincaefolia* Hook.

Vernacular name: Khatodi

Family: Asclepiadaceae

Threatened category: Rare (Nayar and Sastry, 1988), Endangered (Mishra & Singh 2001)

Key characters: Twining herb, Leaves ovate, cordate at base, corolla 3.5-5.5 cm long, more than 5 cm broad.

Description: Tuberous twiners. Stem glabrous. Leaves ovate, cordate, acuminate and puberulous above. Cymes many-flowered; peduncles hirsute; pedicels glabrous. Corolla 3-8 cm long; tube 1.6- 4.5 cm long, base inflated, abruptly narrowed above, funnel-shaped at mouth; lobes 1.5 – 3.5 cm long, linear-oblong above from ovate-deltoid base, pubescent inside and hairy on margins. Outer corona of 5 lobes, entire, emarginated or shortly bifid, hairy; inner ligulate, oblanceolate, glabrous.

Flowering and fruiting: August – October.

Distribution: India - Endemic to Maharashtra.

Reported Localities: Dhule (Kalapani), Pune (Dongarwadi, Sinhagad), Raigad (Karjat, Neral), Satara (Kas, Mahabaleshwar, Pandav dhara hills , Vasota), Thane (Mumbra, Takmak hill).

Ecology: Along the hedges of the moist deciduous forests, on steep slopes.

Association: Large evergreen shrubs *Carissa congesta* & *Carvia callosa*.

* Floral variations in colour and size are very commonly observed during the study at different locations.



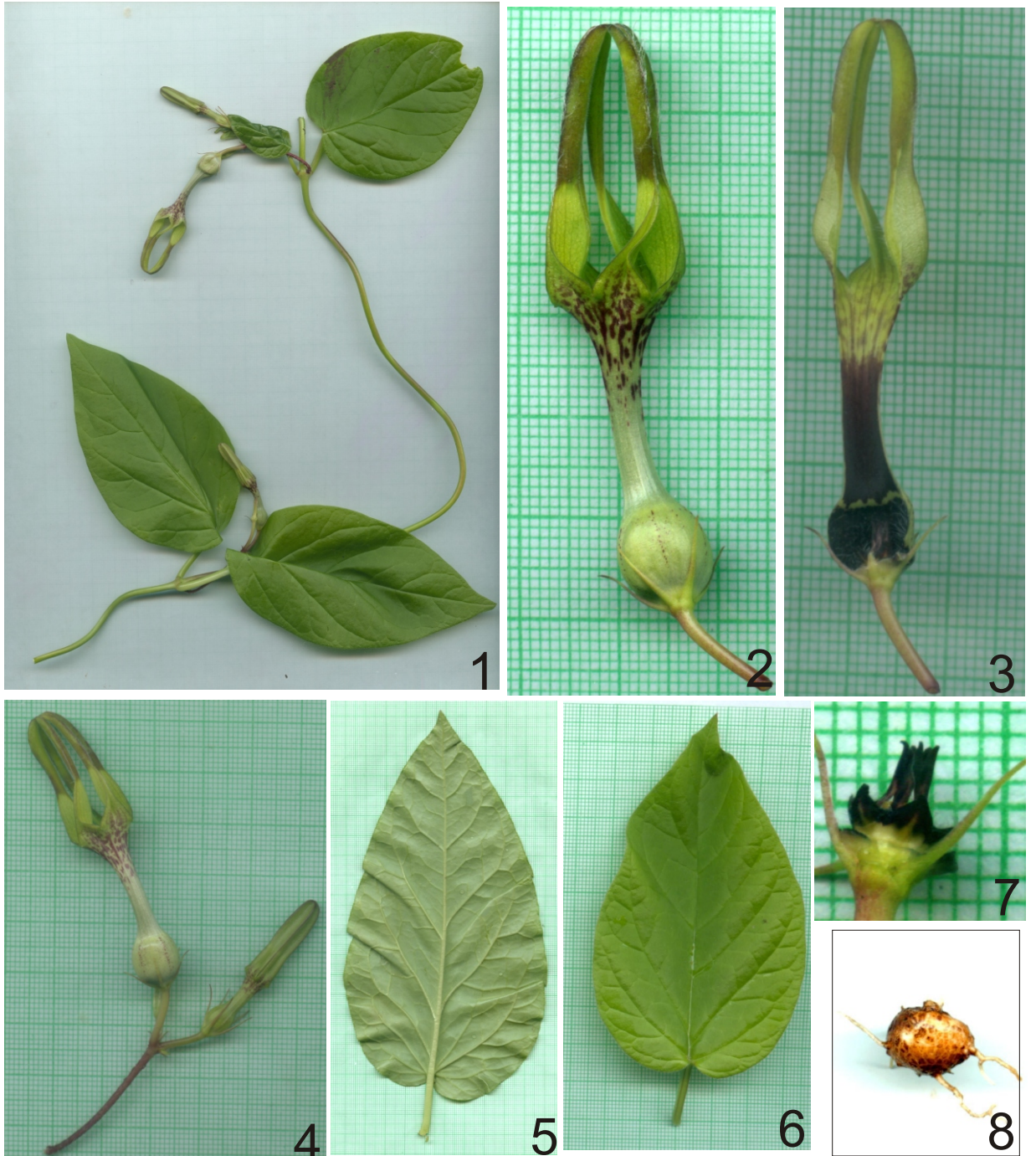
Haritarium

Family Code: 35

Species code: Z - 14B

Naoroji Godrej Centre for Plant Research

***Ceropegia vincaefolia* Hook.**



1.Habit, 2.Flower, 3.Dissected Flower, 4.Inflorescence
5.Leaf-dorsal view, 6.Leaf-ventral view, 7.Corona, 8.Tuber



Haritarium

Family Code: 35

Species code: Z - 14C

Naoroji Godrej Centre for Plant Research

***Ceropegia vincaefolia* Hook.**





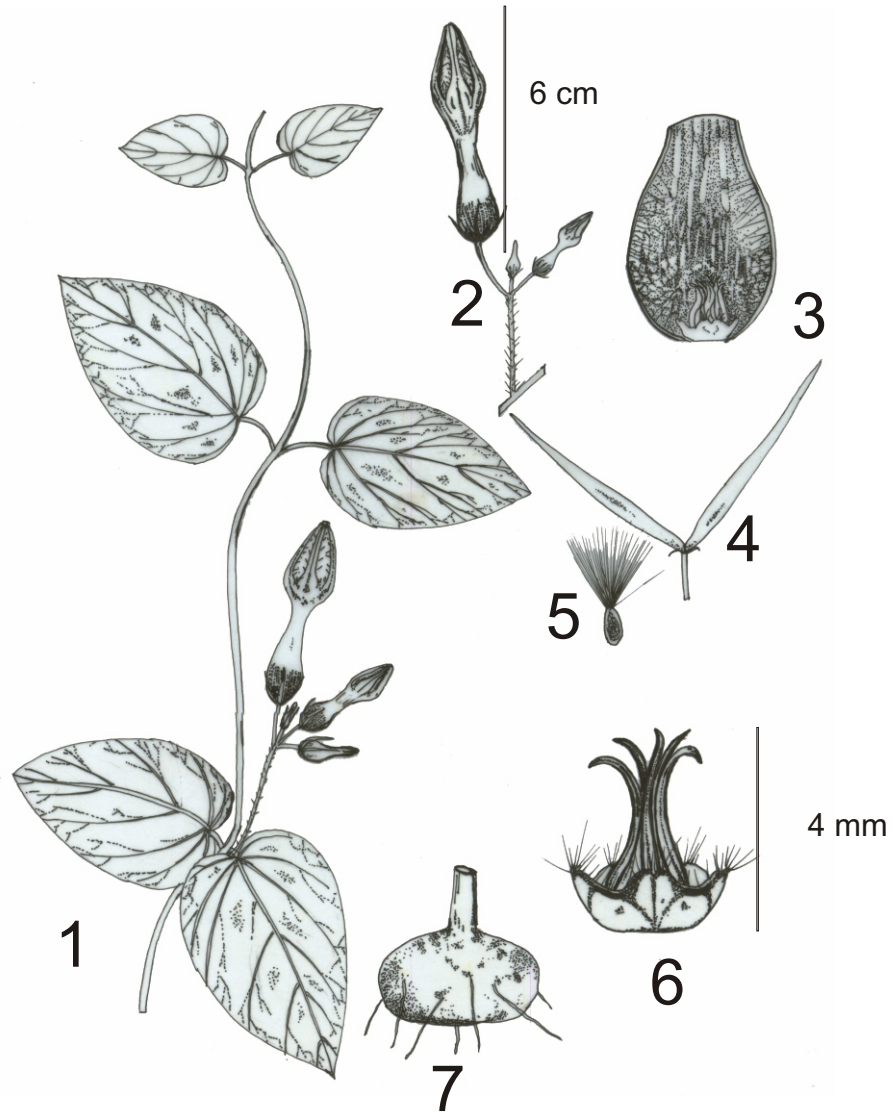
Haritarium

Family Code: 35

Species code: 7 - 14D

Naoroji Godrej Centre for Plant Research

***Ceropegia vincaefolia* Hook.**



1. Habit, 2. Flower, 3. corona, 4. Pod, 5. Seed, 6. Corona, 7. Bulb.



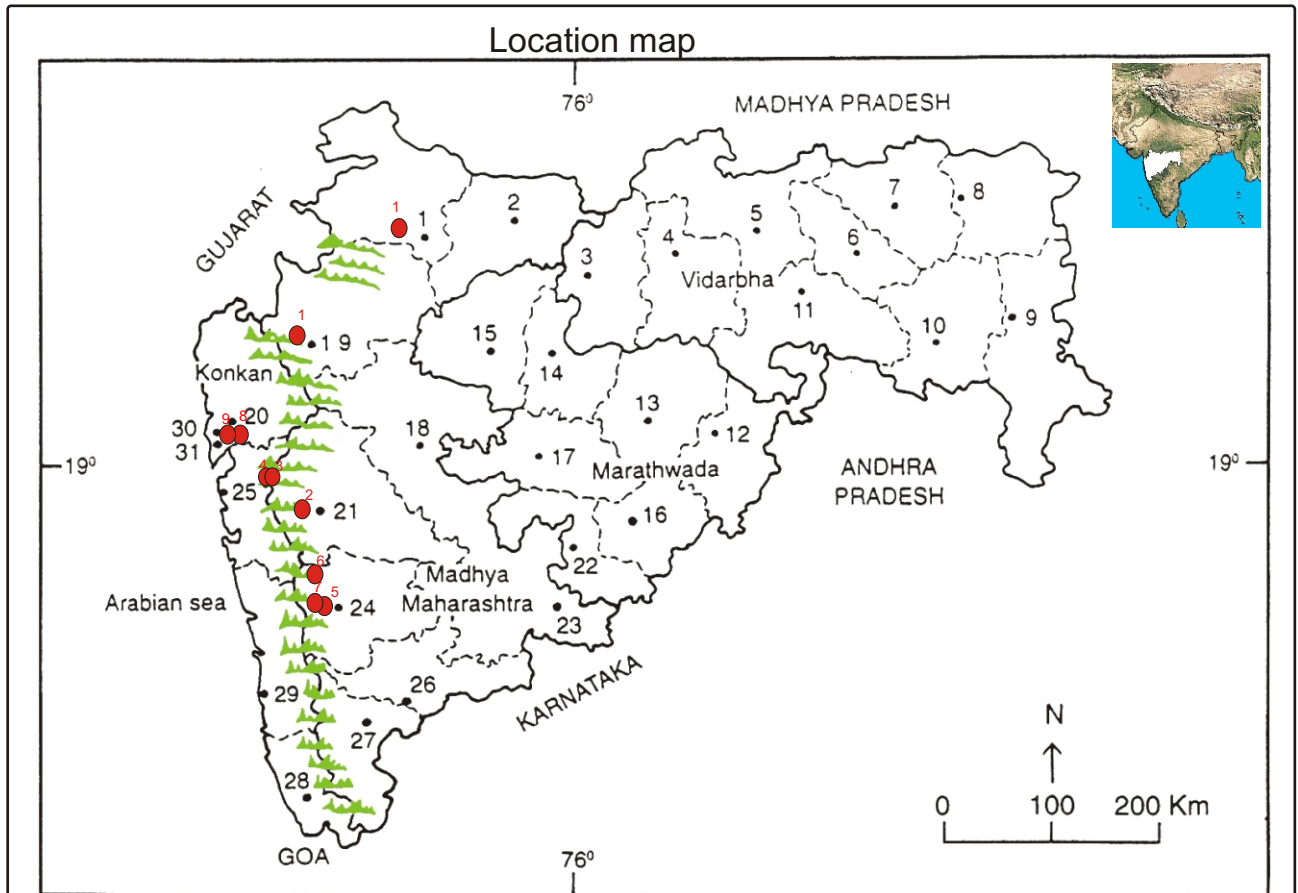
Haritarium

Family Code: 35

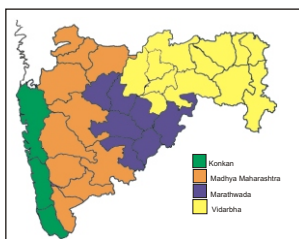
Species code: 7 - 14E

Naoroji Godrej Centre for Plant Research

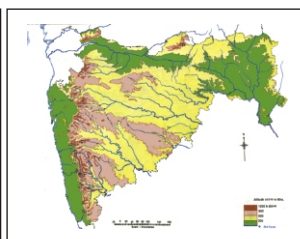
***Ceropegia vincaefolia* Hook.**



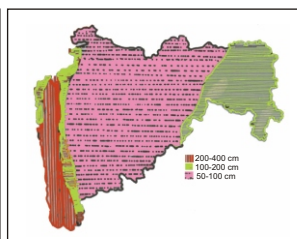
1. Dhule 2. Jalgaon 3. Buldhana 4. Akola 5. Amaravati 6. Wardha 7. Nagpur 8. Bhandara 9. Gadchiroli
 10. Chandrapur 11. Yavatmal 12. Nanded 13. Parbhani 14. Jalna 15. Aurangabad 16. Latur
 17. Beed 18. Ahmadnagar 19. Nashik 20. Thane 21. Pune 22. Osmanabad 23. Solapur 24. Satara
 25. Raigad 26. Sangli 27. Raigad 28. Kolhapur 29. Sindhudurg 30. Mumbai 31. Greater Mumbai.



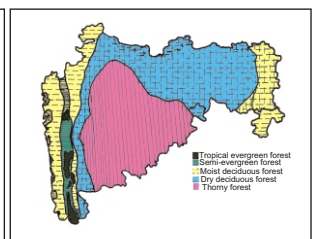
Geographical regions 1



Physical map 2



Rain fall map 3



Forest types 4

Localities- ●

A. Dhule (1-Kalapani), B. Pune (2-Sinhagad), Raigad (3-Karjat, 4-Neral), Satara (5-Kas, 6-Mahabaleshwar, 7-Vaota), Thane (8-Mumbra, 9-Takmak hill).

Geographical distribution:

Latitude (DMS): Between 20° 53' - 17° N & Longitude (DMS): 73° 50' - 74° 5' E.



Haritarium

Family Code: 35

Species code: 7 - 14F

Naoroji Godrej Centre for Plant Research

Ceropegia vincaefolia Hook.

References:

- Ahmed ullah, M & M.P. Nayar (1987): **Endemic Plants of the Indian Region** B.S.I. Calcutta, vol.1:127.
- Ansari, M.Y.(1984): Asclepiadaceae: Genus- *Ceropegia*, **Fasc. Fl. India** 16:31.
- Bachulkar, M.P. 1983. Endangered endemic taxa of Satara district, Maharashtra, in *Rayat Research Journal* 1(2):114.
- Billore, K.V. (1972): **Studies on the vegetation and Flora of Thane district Maharashtra State**. Ph.D. Thesis. (*ined.*)
- Blatter, E. & C.McCann(1932): Revision of the Flora of the Bombay P residency, in *J. Bombay nat. Hist. Soc.*, **36**(3): 536.
- Cooke, T. (1904): **The Flora of Presidency of Bombay**. Vol.2: 239. (rep. Ed.1958).
- Deshpande, S.D., B.D.Sharma & M.P.Nayar (1995) **Flora Mahabaleshwar and adjoining, Maharashtra**, B.S.I. Calcutta, Vol.1: 362.
- Hooker, J.D. *et al.* (1883):**The flora of British India**. London. Vol.4: 72.
- Jagtap, A. P. (1992).Revision of family Asclepiadaceae of India 2 vols. Ph.D.Thesis (*ined.*)
- Jagtap, A.P.& N.P.Singh(1998): *J. Econ. Tax. Bot.*,**22**(1):232.
- Jagtap, A.P.& N.P.Singh(1999): Asclepiadaceae., **Fasc. Fl. India** **24**: 240.
- Kothari, M.J. & S. Moorthy(1993). **The Flora of Raigad district, Maharashtra State**., Botanical Survey of India, Calcutta:233.
- Laxminarasimhan, P.(1996): in B.D. Sharma, S. Karthikeyan & N.P.Singh(eds), **Flora of Maharashtra state, Monocot.**, B.S.I., Calcutta.
- Nayar, M.P.& A.R.K. Sastry (1987): **Red Data Book on Indian Plants**., (eds), B.S.I. Calcutta Vol.2:59.
- Santapau, H. & N.A. Irani (1958),The genus *Ceropegia* in Bombay *Bull. Bot. Soc. Bengal* (Agharkar Mem.Vol.) **12** :13.
- Tetali, P., M. Lale, S.Tetali & N.P.Singh (Ed.) (1998): Technical Report on Thretened Medicinal Plants of Maharashtra. The First Conservation Assessment& Threatened Plant (CAMP).(*ined.*)
- Tetali, *et al.* (2000): **Endemic Plants of India (A Statu s Report of Maharashtra State)**. Naoroji Godrej Centre for Plant Research, Shirwal: 33.
- Yadav, S.R.(1997): Endemic plants of peninsular India with special reference to Maharashtra, in Pokle D.S., S.P. Kanir & V.N. Naik (eds.) **Proceedings, VII IAAT Annual Meet and National Conference**, Aurangabad:41.