



Haritarium

Family Code: 273

Species code: 8 - 3A

Naoroji Godrej Centre for Plant Research

***Flemingia nilgheriensis* (Baker) Wight ex T. Cooke.**

Botanical name: *Flemingia nilgheriensis* (Baker) Wight ex Cooke.

Vernacular name:-

Family : Fabaceae

Threatened category: Endangered (Regionally in Maharashtra).

Key characters: Leaves trifoliate, simple, flowers enclosed in foliaceous, folded bracts.

Description: Herbs, diffusely branched; branches clothed with long, spreading hairs. Leaves trifoliate; leaflets 1.2-2.5 X 0.8-1.2 cm ovate-oblong or oblong-elliptic, acute or acuminate at apex, hairy on both surfaces; stipules about 9 X 3 mm, ovate-oblong, acute, hairy. Flowers dark purple, 6-15 in terminal head; peduncles 1.2-1.6 cm, densely hairy; bracts about 8 X 2.4 mm, lanceolate, acute, hairy. Calyx 9-10 mm long, densely fulvous-hairy. Corolla 1-1.2 cm long, equal to or slightly longer than calyx, dull purple. Pods about 4 mm long, ovoid or subglobose, glabrous, smooth. One seeded, seeds ellipsoid.

Flowering and fruiting: August – November.

Distribution: India: Maharashtra, Karnataka, Goa, Maharashtra

Reported Localities: Ahmednagar (Kalsubai), Ratnagiri (Gothane), Satara Kas, Mahabaleshwar), Sindhudurg (Phonda ghat).

Ecology: On rocky plateaux at an altitude ranging between 900-1200m.

Association: No specific plant association is observed but grows among small grasses and *Plaeocalis ritchii*.



Haritarium

Family Code: 273

Species code: 8 - 3B

Naoroji Godrej Centre for Plant Research

***Flemingia nilgheriensis* (Baker) Wight ex T. Cooke.**



1. Habitat, 2. Inflorescence,



Haritarium

Family Code: 273

Species code: 8 - 3C

Naoroji Godrej Centre for Plant Research

***Flemingia nilgheriensis* (Baker) Wight ex T. Cooke.**





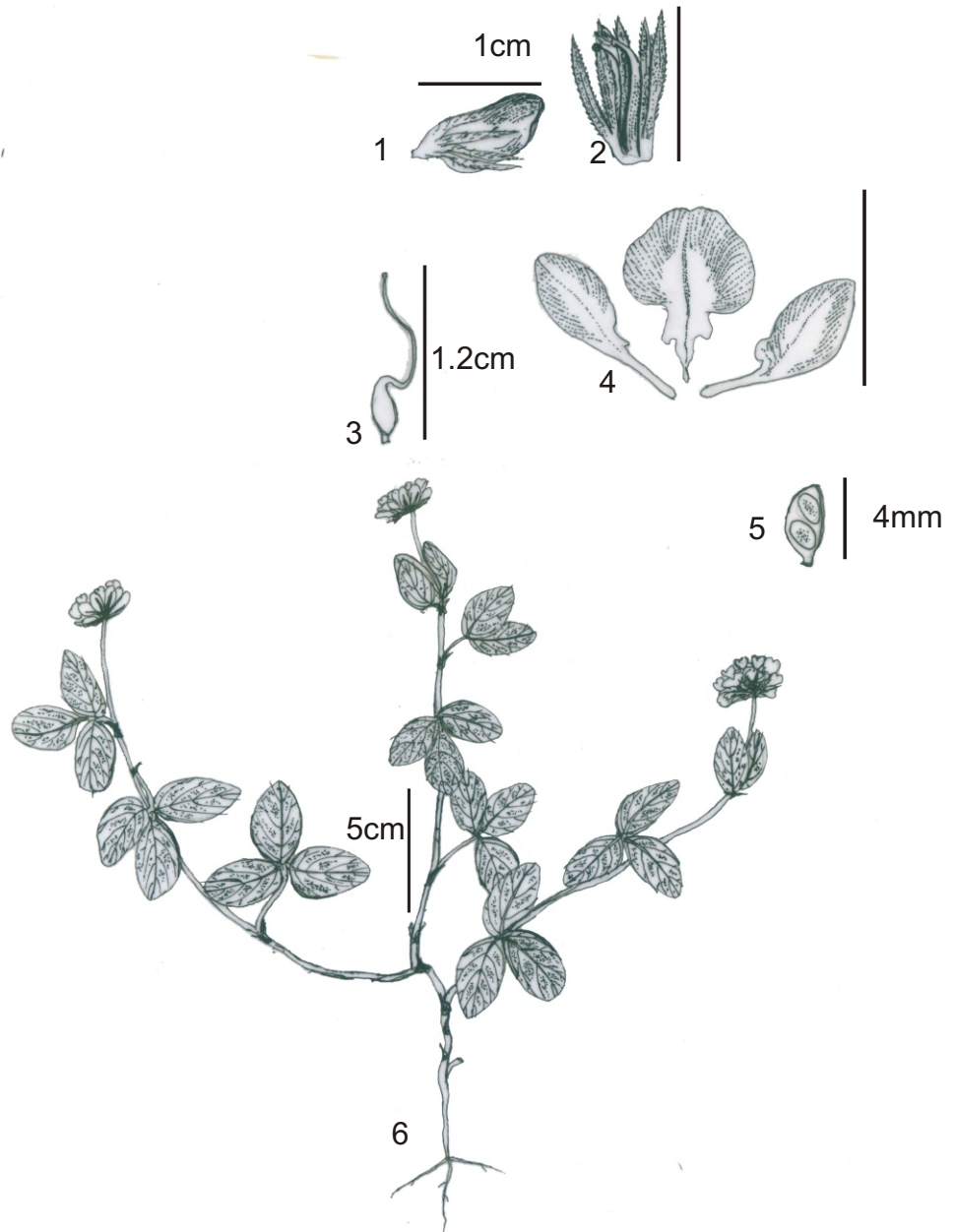
Haritarium

Family Code: 273

Species code: 8 - 3D

Naoroji Godrej Centre for Plant Research

***Flemingia nilgheriensis* (Baker) Wight ex T. Cooke.**



1. Flower, 2. Calyx, 3. Gynoecium, 4. Corolla, 5. Pod, 6. Habit.



Haritarium

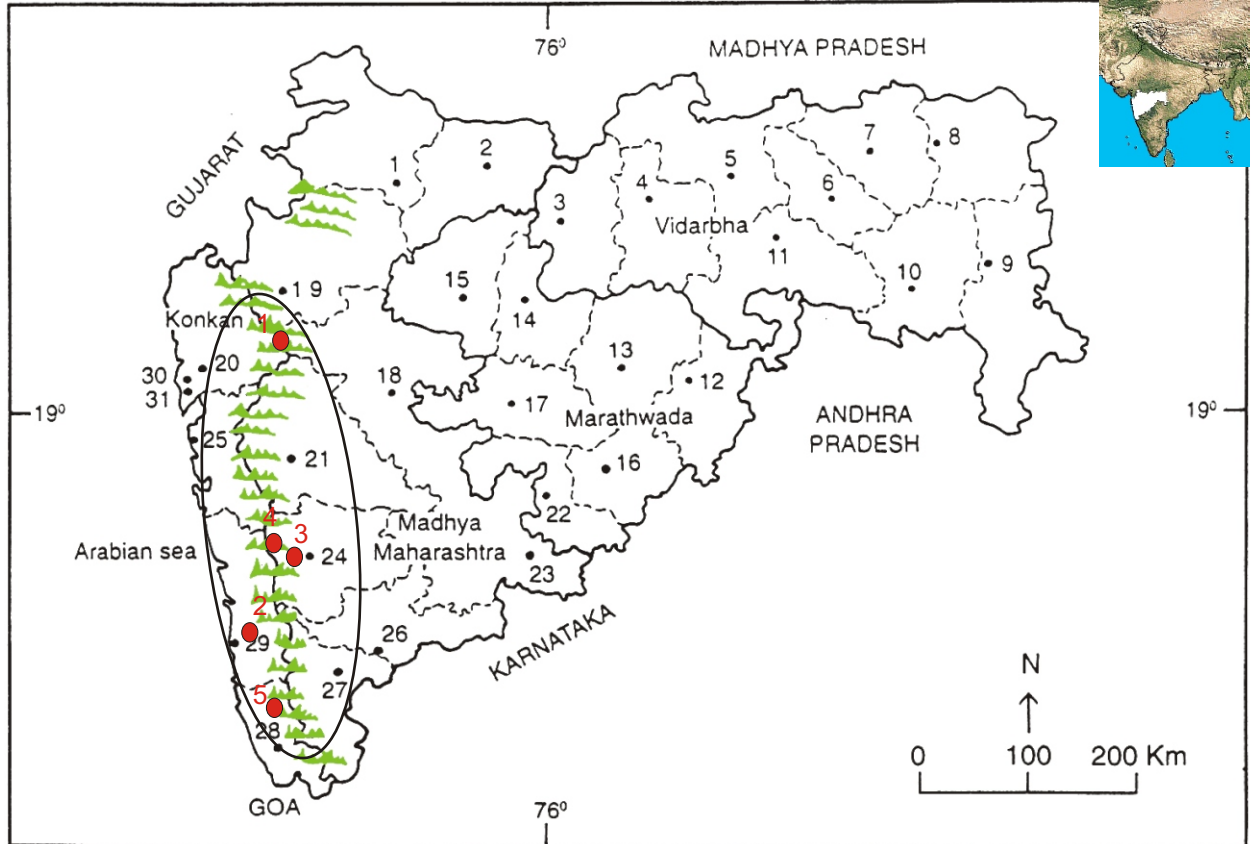
Family Code: 273

Species code: 8 - 3E

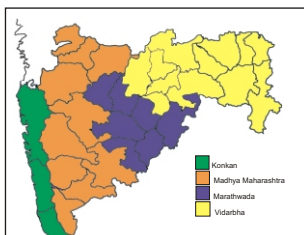
Naoroji Godrej Centre for Plant Research

Flemingia nilgheriensis (Baker) wight ex T. Cooke.

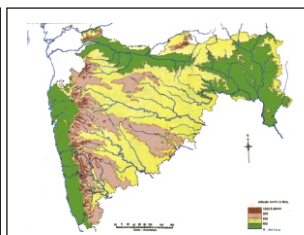
Location map



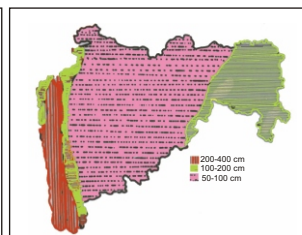
- 1.Dhule 2.Jalgaon 3. Buldhana 4.Akola 5.Amaravati 6.Wardha 7.Nagpur 8. Bhandara 9. Gadchiroli
 10. Chandrapur 11. Yavatmal 12. Nanded 13. Parbhani 14. Jalna 15. Aurangabad 16.Latur
 17. Beed 18. Ahmadnagar 19 Nashik 20. Thane 21. Pune 22. Osmanabad 23. Solapur 24.Satara
 25. Raigad 26.Sangli 27. Kolhapur 28. Sindhudurg 29. Ratnagiri 30.Mumbai 31.Greater Mumbai.



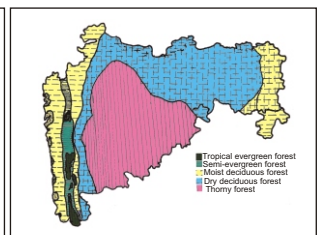
Geographical regions 1



Physical map 2



Rain fall map 3



Forest types 4

Localities:- ●

A.Ahmednagar (1.Kalsubai), B.Ratnagiri (2.Gothane), C.Satara (3.Kas, 4.Mahabaleshwar), D.Sindhudurg (5.Phonda ghat).

Geographical distribution in Maharashtra:

Latitude (DMS): Between 19° 61' -16° 38' N & Longitude (DMS): 73° 0' -73° 5' E.



Haritarium

Family Code: 273

Species code: 8 - 3F

Naoroji Godrej Centre for Plant Research

Flemingia nilgheriensis (Baker) Wight ex T. Cooke.

References:

Ahmedullah, M & M.P. Nayar (1987): **Endemic Plants of the Indian Region** B.S.I. Calcutta, vol.1:122.

Cooke, T. (1904): **The Flora of Presidency of Bombay**. Vol.1: 393. (rep. Ed.1958).

Deshpande, S.D., B.D.Sharma & M.P.Nayar (1995) **Flora Mahabaleshwar and adjoining, Maharashtra**, B.S.I. Calcutta, Vol.2: 576.

Gaikwad S.P. & S.R. Yadav(2004): in T. Pullaiah (ed.)Endemic flowering plant species of Maharashtra and their possible utilization; **Biodiversity in India**, Regancy publications, New Delhi:39.

Hooker, J.D. *et al.*(1876):**The flora of British India**. London. Vol.2: 230.

Kulkarni, B. G. (1988): **Flora of Sindhudurg**, B.S.I. Calcutta: 123.

Mistry, M.K. (1986): **Flora of Ratnagiri district, 1** .Ph.D. Thesis (*ined.*): 390.

Raghavan, R.S.& Singh(1984): An inventory of endemic and vulnerable species of Western India deserving conservation, in *J.Econ. Tax. Bot.* 5(1): 153-164.

Sanjappa M.(1992):**Legumes of India**. Bishen Singh Mahendra Pal Singh, Deha Dun.:177

Singh N.P. & S. Karthikeyan (2000):(eds), **Flora of Maharashtra state, Dicotyledones**.Vol. 2: . B.S.I., Calcutta: 687.

Tetali, *et al.* (2000): **Endemic Plants of India (A Status Report of Maharashtra State)**. Naoroji Godrej Centre for Plant Research, Shirwal: 23.

Vartak, V.D. 1983. Observation on rare, imperfectly known and endemic plants in the sacred groves of western Maharashtra, in S.K.Jain & R.R. Rao (eds.) **An assessment of threatened plants of India** pp169-178. B.S.I., Calcutta

Yadav, S.R.(1997): Endemic plants of peninsular India with special reference to Maharashtra, in Pokle D.S., S.P. Kanir & V.N. Naik (eds.) **Proceedings, VII IAAT Annual Meet and National Conference**, Aurangabad:46.