



Haritarium

Family Code: 273

Species code: 22- 11A

Naoroji Godrej Centre for Plant Research

Smithia bigemina Dalzell

Botanical name: *Smithia bigemina* Dalzell

Vernacular name: Berki

Family : Papilionaceae

Threatened category: -

Key characters: Leaflets two in pairs, flowers in racemes, calyx membranous, veins distinctly netted, lower lips of calyx 3 lobed, Pods shorter often jointed, Joints of pods folded inside calyx.

Description: Herbs, diffuse, about 15 cm high. Leaves abruptly pinnate; leaflets 0.5-1.0 X 0.2-0.5 cm, oblanceolate, obtuse at apex, cuneate at base. Flowers yellow, 2-8 in copious, axillary racemes, crowded towards tips. Pods jointed, tubercled.

Flowering and fruiting: August –January.

Distribution: India – Endemic to India.

Reported Localities in districts: Ahmednagar, Amaravati, Kolhapur, Nasik, Pune, Ratnagiri, Satara, and Thane.

Ecology: In open wet places.

Association: Grasses.



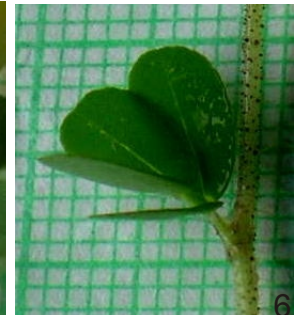
Haritarium

Family Code: 273

Species code: 22- 11B

Naoroji Godrej Centre for Plant Research

***Smithia bigemina* Dalz.**



1. Habitat, 2.Habit, 3. Flower, 4 .Inflorescence, 5. Calyx, 6. Leaf.



Haritarium

Family Code: 273

Species code: 22- 11C

Naoroji Godrej Centre for Plant Research

***Smithia bigemina* Dalz.**





Haritarium

Family Code: 273

Species code: 22- 11D

Naoroji Godrej Centre for Plant Research

Smithia bigemina Dalz.



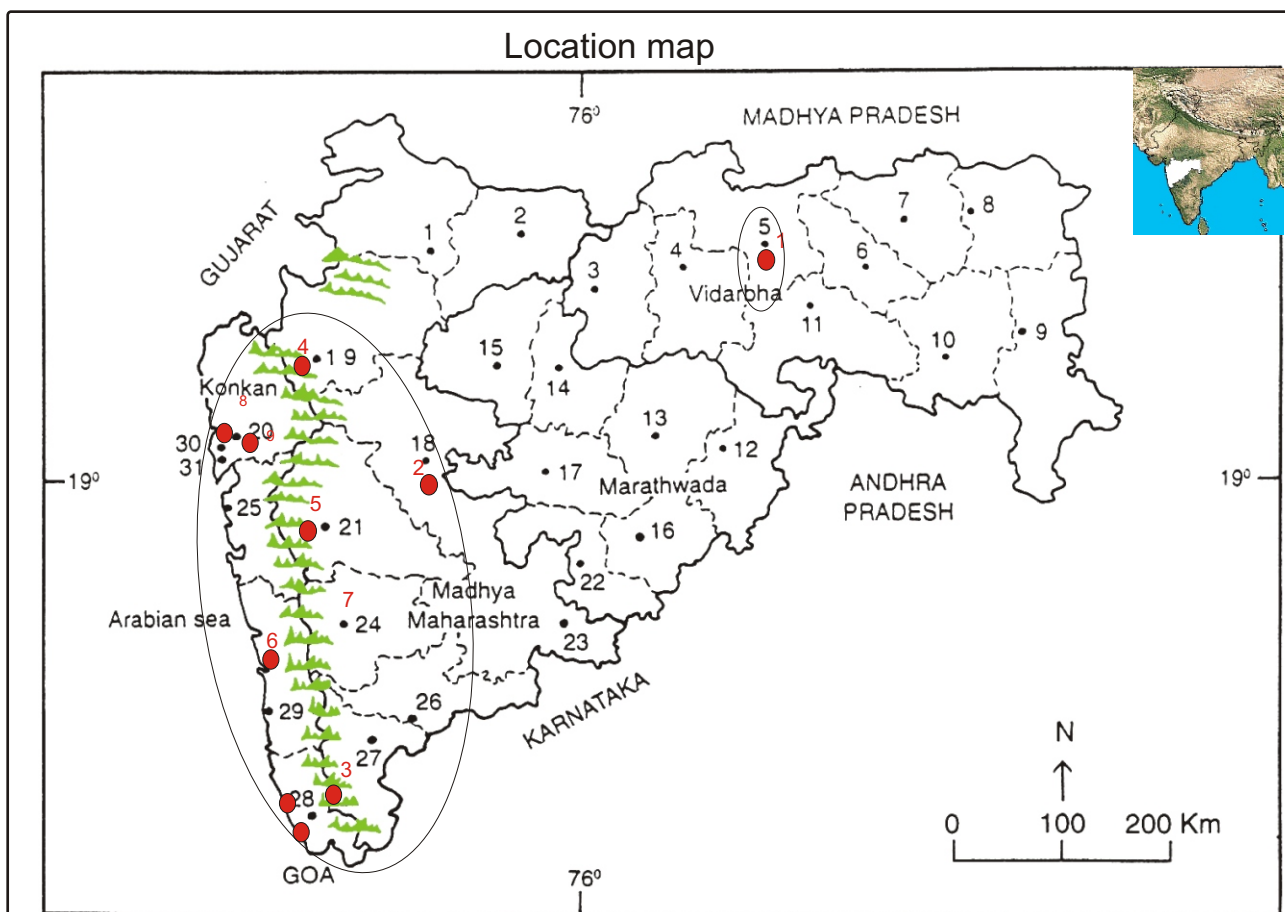
Haritarium

Family Code: 273

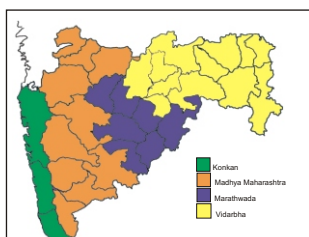
Species code: 22- 11E

Naoroji Godrej Centre for Plant Research

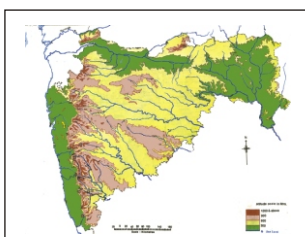
Smithia bigemina Dalz.



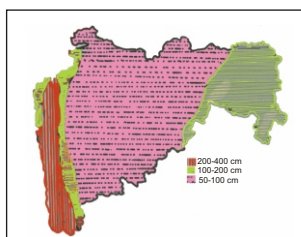
1.Dhule 2.Jalgaon 3. Buldhana 4.Akola 5.Amaravati 6.Wardha 7.Nagpur 8. Bhandara 9. Gadchiroli
 10. Chandrapur 11. Yavatmal 12. Nanded 13. Parbhani 14. Jalna 15. Aurangabad 16.Latur
 17. Beed 18. Ahmadnagar 19 Nashik 20. Thane 21. Pune 22. Osmanabad 23. Solapur 24.Satara
 25. Raigad 26.Sangli 27. Kolhapur 28. Sindhudurg 29. Ratnagiri 30.Mumbai 31.Greater Mumbai.



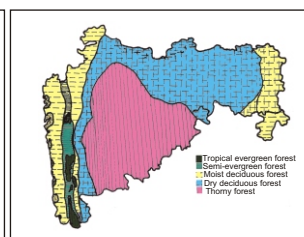
Geographical regions 1



Physical map 2



Rain fall map 3



Forest types 4

Localities- ●

1. Ahmednagar, 2. Amaravati, 3. Kolhapur, 4. Nasik, 5.Pune, 6. Ratnagiri, 7. Satara, 8.Thane.

Geographical distribution in Maharashtra:

Latitude (DMS): 19° 58' - 17° 49' N & Longitude (DMS): 72 ° 58' -74° 43'E. And
 Latitude 20° 55' & Longitude 77° 45'.



Haritarium

Family Code: 273

Species code: 22- 11F

Naoroji Godrej Centre for Plant Research

Smithia bigemina Dalz.

References:

Cooke. T (1904): **Flora of Presidency of Bombay**. Vol.1:360.(rep. Ed.1958)

Hooker, J.D. *et al.*(1885):**The flora of British India**. London. Vol.2: 149.

Sanjappa (1991): Legumes of India : B.S.I.Calcutta:246.

Singh N.P. & S. Karthikeyan (2000):(eds), **Flora of Maharashtra state, Dicotyledones**.Vol. 1: . B.S.I., Calcutta:739.