



**Haritarium**

Family Code: 273

Species code: 22- 2A

**Naoroji Godrej Centre for Plant Research**

**Smithia purpurea Hook.**

**Botanical name:** *Smithia purpurea* Hook.

**Vernacular name:** Burkar

**Family :** Fabaceae

**Threatened category:** Low risk (Gaikwad & Yadav, 2004).

**Key characters:** Herbs, stems not bristly, leaflets more than 2 in pairs, Flowers purple, one or two in the axils of leaves, Calyx rigid, deeply 2 lipped.

**Description:** Suffructicose Annual erect herbs, branched. Stems slender, not bristly. Leaves sessile, leaflets 6-15 pairs. oblong-lanceolate, apex subacute, bristle tipped, base rounded, 0.5 X 1.0 cm. Inflorescence acillary raceme. Flowers 6-12, purple in colour. Calyx two lipped. Paralle veined. Corolla purple with a white spot at the base of the standard. Stamens in 2 bundles. Pods flattened, 10-12 jointed, joints orbicular-oblong, reticulately veined.

**Flowering and fruiting:** September – February.

**Distribution:** India – Endemic to Western Ghats.

**Reported Localities in districts:** Ahmednagar, Nasik, Pune, Satara, and Thane districts.

**Ecology:** Occasionally seen many individuals in patches on open plateaux, banks of streamlets, road Sides and farm bunds of ghat regions. More frequently encountered near village environs and disturbed places. The leaves are edible and hence protected by the villagers.

**Association:** No specific plant association is observed.



**Haritarium**

Family Code: 273

Species code: 22- 2B

**Naoroji Godrej Centre for Plant Research**

***Smithia purpurea* Hook.**



1.Habit, 2.Flower, 3. Dissected flower, 4. Inflorescence 5.Gynoecium, 6. Anthers, 7. Calyx with bracts, 8. Pods, 9.Seeds, 10.Leaves- dorsal side, 11. Leaves- ventral side.



**Haritarium**

Family Code: 273

Species code: 22- 2C

**Naoroji Godrej Centre for Plant Research**

***Smithia purpurea* Hook.**





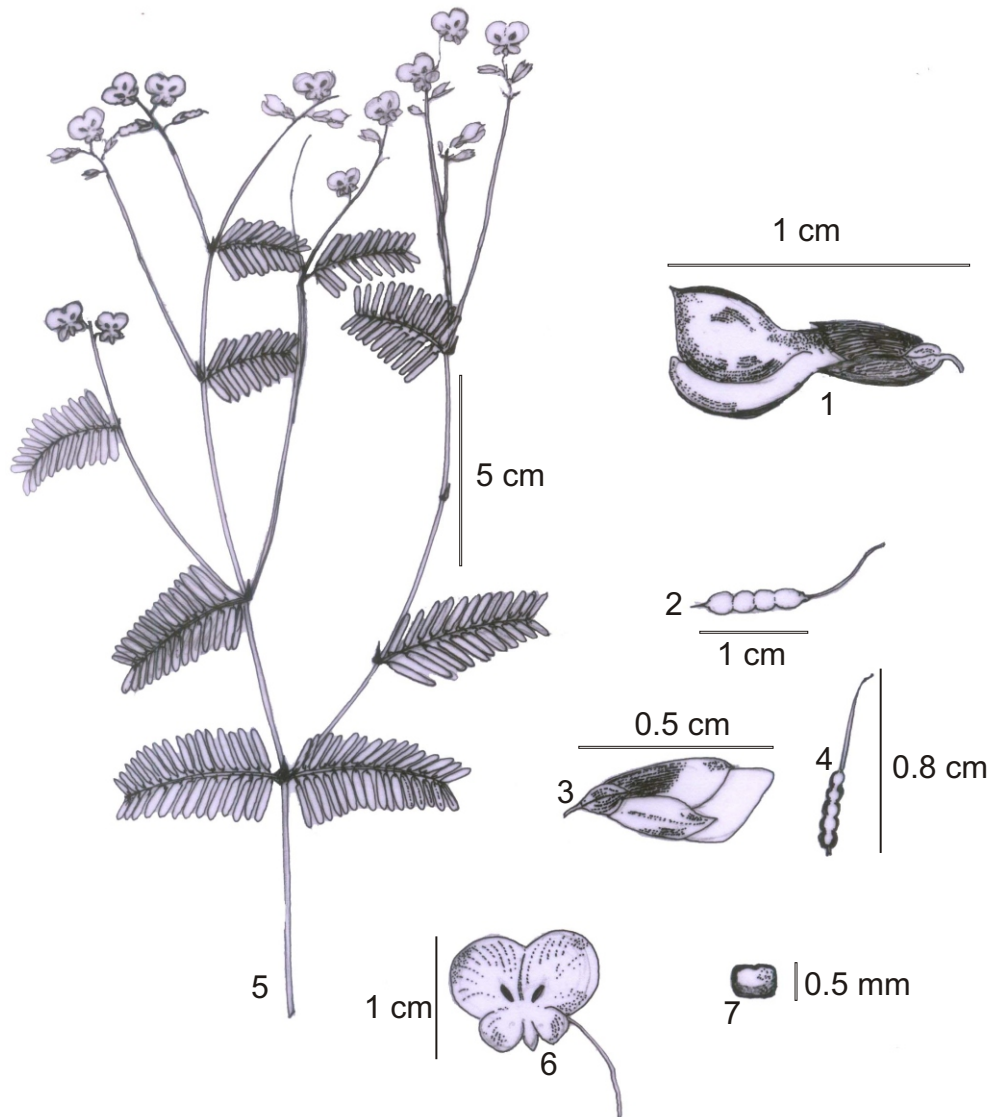
**Haritarium**

Family Code: 273

Species code: 22- 2D

**Naoroji Godrej Centre for Plant Research**

***Smithia purpurea* Hook.**



1. Flower, 2. Pod, 3. Calyx, 4. Gynoecium, 5. Habit, 6. Flower, 7. Seed.



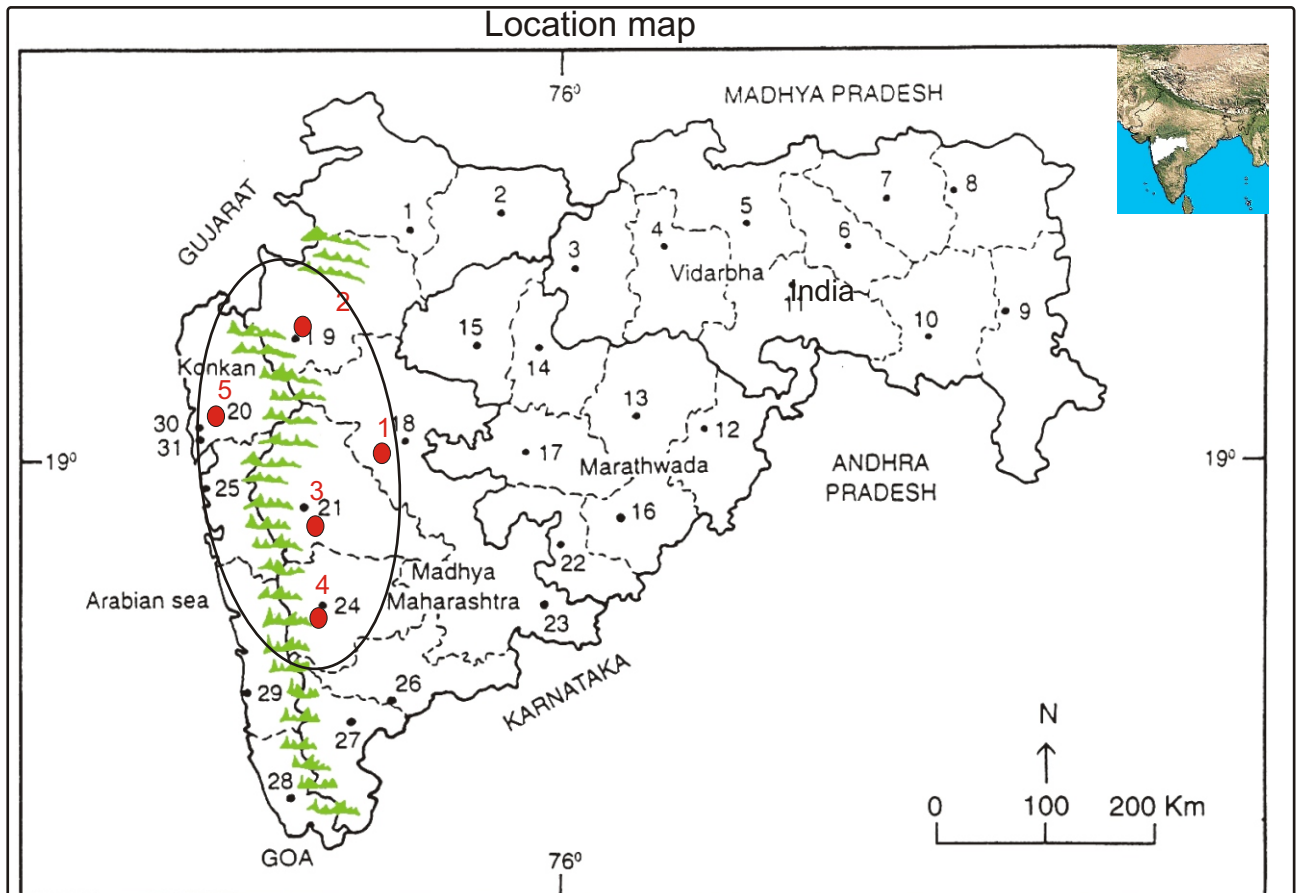
# Haritarium

Family Code: 273

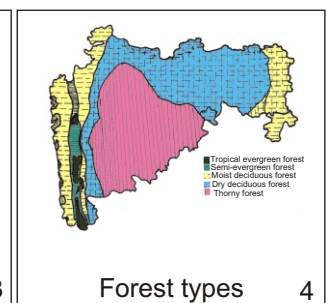
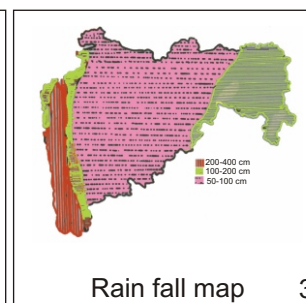
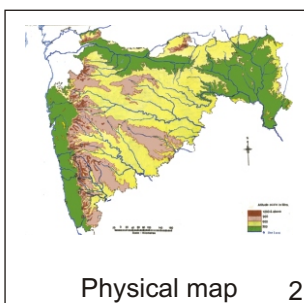
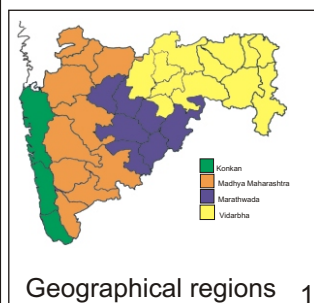
Species code: 22- 2E

## Naoroji Godrej Centre for Plant Research

### Smithia purpurea Hook.



1.Dhule 2.Jalgaon 3. Buldhana 4.Akola 5.Amaravati 6.Wardha 7.Nagpur 8. Bhandara 9. Gadchiroli  
10. Chandrapur 11. Yavatmal 12. Nanded 13. Parbhani 14. Jalna 15. Aurangabad 16.Latur  
17. Beed 18. Ahmadnagar 19 Nashik 20. Thane 21. Pune 22. Osmanabad 23. Solapur 24.Satara  
25. Raigad 26.Sangli 27. Kolhapur 28. Sindhudurg 29. Ratnagiri 30.Mumbai 31.Greater Mumbai.



Localities- ●

1.Ahmednagar, 2. Nasik, 3. Pune, 4, Satara, 5.Thane..

Geographical distribution:

Latitude (DMS): Between 19<sup>o</sup> 58'- 16<sup>o</sup> 95' N & Longitude (DMS): 72<sup>o</sup> 58'-74<sup>o</sup>.43' E;



**Haritarium**

Family Code: 273

Species code: 22- 2F

**Naoroji Godrej Centre for Plant Research**

**Smithia purpurea Hook.**

**References:**

Cooke. T (1904): **Flora of Presidency of Bombay**. Vol.1:359.(rep. Ed.1967)

Hooker, J.D. *et al.*(1876):**The flora of British India**. London. Vol.2: 149.

Singh N.P. & S. Karthikeyan (2000):(eds), **Flora of Maharashtra state, Dicotyledones**.Vol. 1: . B.S.I., Calcutta:741.

Tetali, *et al.* (2000): **Endemic Plants of India ( A Status Report of Maharashtra State)**. Naoroji Godrej Centre for Plant Research, Shirwal: 26.