



Haritarium

Family Code: 293

Species code: 10 - 4A

Naoroji Godrej Centre for Plant Research

Abutilon ranadei Woodrow & Stapf

Botanical name: *Abutilon ranadei* Woodrow & Stapf

Vernacular name: -

Family : Malvaceae

Threatened category: **Endangered** (Gaikwad & Yadav, 2004). **or presumed extinct** (Nayar & Sastri, 1987) **Critically endangered** (Mishra & Singh, 2001).

Key characters: Calyx lobes 2 cm long, flowers orange yellow, staminal column 20 mm long, filaments 3mm long, carpel 5.

Description: Large shrub or small tree upto 3.0 m tall. Young portion of the stem densely pubescent with minute stellate hairs, leaves 4-20 X 3-15 cm, ovate to round both sides stellate hairy crenate-dentate at margins. Flowers solitary, axillary. Calyx campanulate, connate in the middle, Corolla 3.0 cm across orange yellow, staminal column 2.5 cm long, carpels 5, densely hairy.

Flowering and fruiting: November - February.

Distribution: Endemic to Western Ghats of Maharashtra.

Reported Localities: Pune (Dongarwadi, Shilim, Shirwata, Torna, Vadivale dam catchment area), Ratnagiri (Amba ghat), Satara (Vasota fort); Sindhugurg (Amboli).

Ecology: Growing on hedges of moist deciduous forests between 600-1200m altitude.

Association: *Carvia callosa*.



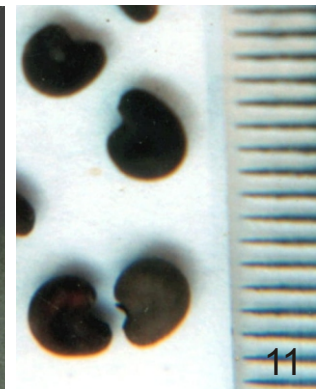
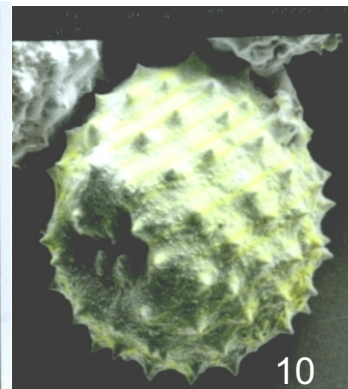
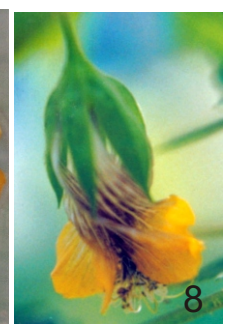
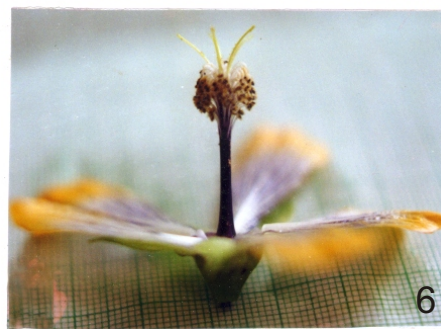
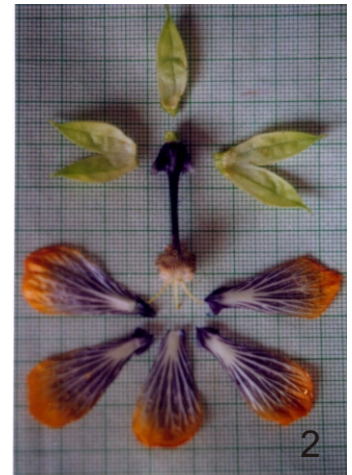
Haritarium

Family Code: 293

Species code: 10 - 4B

Naoroji Godrej Centre for Plant Research

***Abutilon ranadei* Woodrow & Stapf**



1.Habit, 2.Dissected flower, 3-8 Different stages of flower, 9. Anther, 10. Pollen grain, 11. Seed.



Haritarium

Family Code: 293

Species code: 10 - 4C

Naoroji Godrej Centre for Plant Research

***Abutilon ranadei* Woodrow & Stapf**





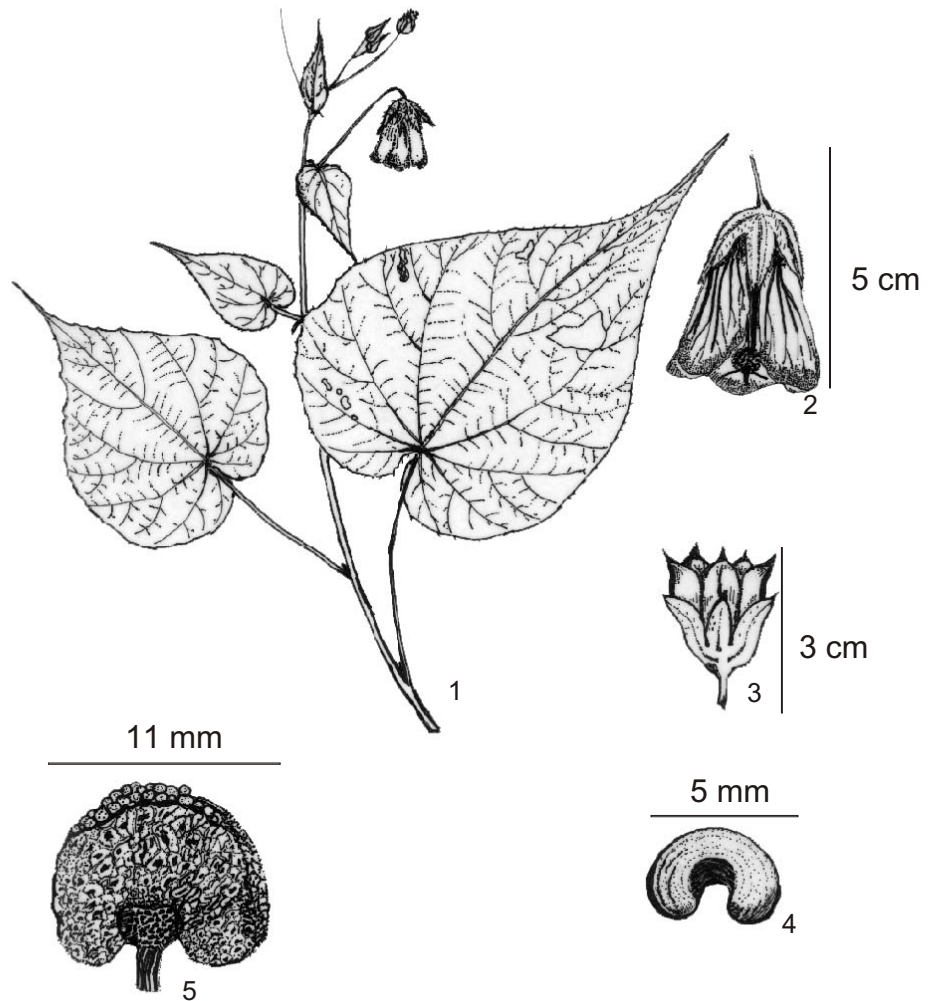
Haritarium

Family Code: 293

Species code: 10 - 4D

Naoroji Godrej Centre for Plant Research

***Abutilon ranadei* Woodrow & Stapf**



1.Habit, 2.Flower, 3.Fruit, 4. Seed, 5 Anther



Haritarium

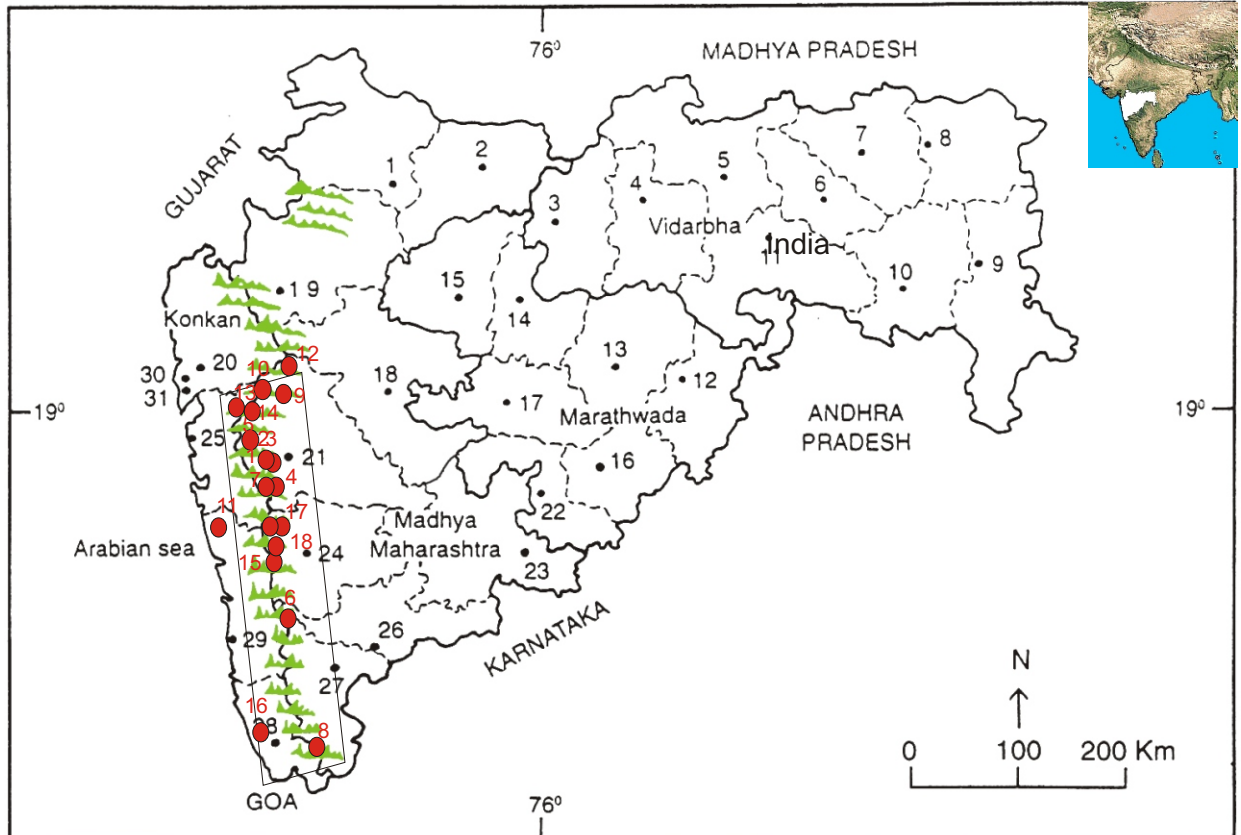
Family Code: 293

Species code: 10 - 4E

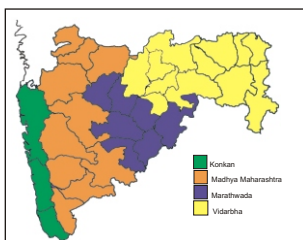
Naoroji Godrej Centre for Plant Research

Abutilon ranadei Woodrow & Stapf

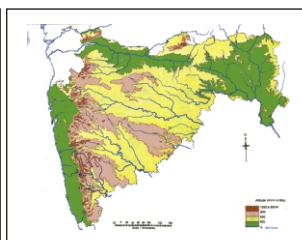
Location map



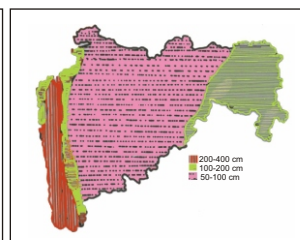
1.Dhule 2.Jalgaon 3. Buldhana 4.Akola 5.Amaravati 6.Wardha 7.Nagpur 8. Bhandara 9. Gadchiroli
10. Chandrapur 11. Yavatmal 12. Nanded 13. Parbhani 14. Jalna 15. Aurangabad 16.Latur
17. Beed 18. Ahmadnagar 19 Nashik 20. Thane 21. Pune 22. Osmanabad 23. Solapur 24.Satara
25. Raigad 26. Sangli 27. Kolhapur 28. Sindhudurg 29. Ratnagiri 30.Mumbai 31.Greater Mumbai.



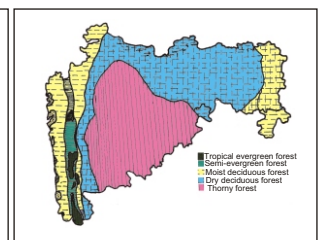
Geographical regions 1



Physical map 2



Rain fall map 3



Forest types 4

Localities- ●

A.Pune (1-Dongarwadi,2-Shilim,3- Shirwata, 4-Torna, 5-Vedivale dam catchment), B. Ratnagiri (6- Amba ghat) C.Satara(7-Vasota), D. Sindhu durg(8-Amboli).

General: 9. Ambegaon, 10.Bhamashankar, 11. Dapoli, 12.Junnar, 13.Khandala,14.Lonavala, 15. Mahabaleshwar, 16. Malwan, 17. Shirwal,18. Wai.

Geographical distribution in Maharashtra:

Latitude (DMS): 18° 31' -16° 95' N & Longitude (DMS): 73° 32' -74° 0' E.



Haritarium

Family Code: 293

Species code: 10 - 4F

Naoroji Godrej Centre for Plant Research

Abutilon ranadei Woodrow & Stapf

References:

- Ahmedullah, M & M.P. Nayar (1987): **Endemic Plants of the Indian Region** B.S.I. Calcutta, vol.1:79.
- Almeida, M.R.(1986):**Flora of Maharashtra**- Orient press, Mumbai. Vol.I :101-102.
- Bachulkar, M.P. (1983): Endangered endemic taxa of Satara district, Maharashtra, *Rayat Research Journal*, 1(2):109-115.
- Cooke, T. (1904): **The Flora of Presidency of Bombay**. Vol.1:101-102. (2nd rep. Ed.1967).
- Gaikwad S.P. & S.R. Yadav(2004): T. Pullaiah (ed.)Endemic flowering plant species of Maharashtra and their possible utilization; **Biodiversity in India**, Regancy publications, New Delhi:36.
- Mistry,M.K. & S.M. Almeida (1989): Some rare, endangered and threatened plant species from Ratnagiri district, Maharashtra, *J.Bombay nat. Hist. Soc.*, **86**(3):478.
- Mishra, D.K & N.P. Singh (2001): Endemic & Threatened flowering plants of Maharashtra, B.S.I., Calcutta.
- Nayar, M.P.& A.R.K. Sastry (1987): (eds)**Red Data Book on Indian Plants.**, B.S.I. Calcutta Vol.1:198.
- Paul, T.K. & M.P. Nayar(1988): Malvaceae. **Fasc. Fl. India** 19: 64-233.
- Paul, T.K. (1993): Malvaceae in B.D.Sharma & M.Sanjappa (eds) **Flora of India.**, B.S.I.Calcutta. Vol. 3:256-394.
- Punekar, S. A., Karade S.P. & Jagadale R.P.(2001): Collection of endemic rare species *Abutilon ranadei* Woodrow & Stapf (Malvaceae). *J. Econ. Tax.Bot.*25: 261- 263.
- Raghavan, R. S. and N.P. Singh (1983): in S.K. Jain & A.R.K. Sastry (eds.) *Plant. Cons. Bull.*, vol. **3**: 4.
- Raghavan, R.S.& Singh(1984): An inventory of endemic and vulnerable species of Western India deserving conservation, in *J.Econ.Tax. Bot.* 5(1): 156.
- Singh N.P. & S. Karthikeyan (2001): **Flora of Maharashtra**. Vol.1., B.S.I. India, Calutta: 299- 303.
- Tetali, *et al.* (2000): **Endemic Plants of India (A Status Report of Maharashtra State)**., Naoroji Godrej Centre for Plant Research, Shirwal: 17.
- Tetali.P. Sujata Tetali, P.V.Joshi, Sanjay Kulkarni, P. Lakshminarasimhan & P.V. Prasanna (2004) Ecological and Conservation Studies of *Abutilon ranadei* Woodr. *et* Stapf *J. Bombay nat. Hist. Soc.* Vol. 101 (3) 344-352.
- Woodrow, G.M. & Stapf.(1894) :*Abutilon ranadei*, *Kew bull.*:99.
- Woodrow, G.M. (1897): Flora of Western India *J. Bombay Nat. Hist.Soc.*,11:26.
- Yadav, S.R.(1997): Endemic plants of peninsular India with special reference to Maharashtra, in Pokle D.S., S.P. Kanir & V.N. Naik (eds.). **Proceedings, VII IAAT Annual Meet and National Conference**, Aurangabad:37.
- Yadav, S.R. & Sardesai (2002): **Flora of Kolhapur District.**, Shivaji University. Kolhapur.