



**Haritarium**

Family Code: 579

Species code: 15 - 4A

**Naoroji Godrej Centre for Plant Research**

**Aerides maculosa Lindl.**

**Botanical name:** *Aerides maculosa* Lindl.

**Family :** Orchidaceae

**Threatened category:** **Low Risk** (Gaikwad & Yadav, 2004).

**Vernacular name:** -

**Key characters:** Leaf-apex bilobed, lobes unequal or subequal, rounded or subacute, Pollinia waxy, Anther cells confluent, Lip spurred, Spur distant from base of lip.

**Description:** Epiphyte. Stems 1.0-1.5 cm thick, sheathed; Leaves channeled, coriaceous, 3-23 X 0.8-3.0 cm, linear-oblong, broadest at middle, with 2 unequal, rounded lobes at apex. Inflorescence up to 24 cm long, simple or branched. Flowers 2.5 cm in diameter, pink, pedicelled, bracteate. Sepals white flushed with pink-mauve, usually speckled with darker colored-spots. Petals similar to sepals, often subfalcate. Lip 3 lobed, lateral lobes small, faintly pinkish white, rounded, with a fleshy white subconical bilobed callus in between. Mid lobe deep rose pink, flushed with dark coloured tip, margins crisped. Capsules 2-5X0.6-1.0 cm, obovoid, strongly ribbed, shortly stalked.

**Flowering and fruiting:** May – October.

**Distribution:** India- Ahmednagar; Amaravati, Kolhapur; Nasik; Pune; Raigad; Raigad, Ratnagiri, Satara, Sindhudurg; Thane.

**Reported Localities:** Badlapur, Karjat, Tansa, Khandala, Lonavla, Panchgani, Mahabaleshwar, Purandhar, Bhimashankar.

**Ecology:** This is one of the common epiphytic orchids in more or less open deciduous forests. It has been reported growing on various trees.

**Association:** Commonly grows on *Terminalia crenulata*,, *T. bellerica*, *Mangifera indica*.



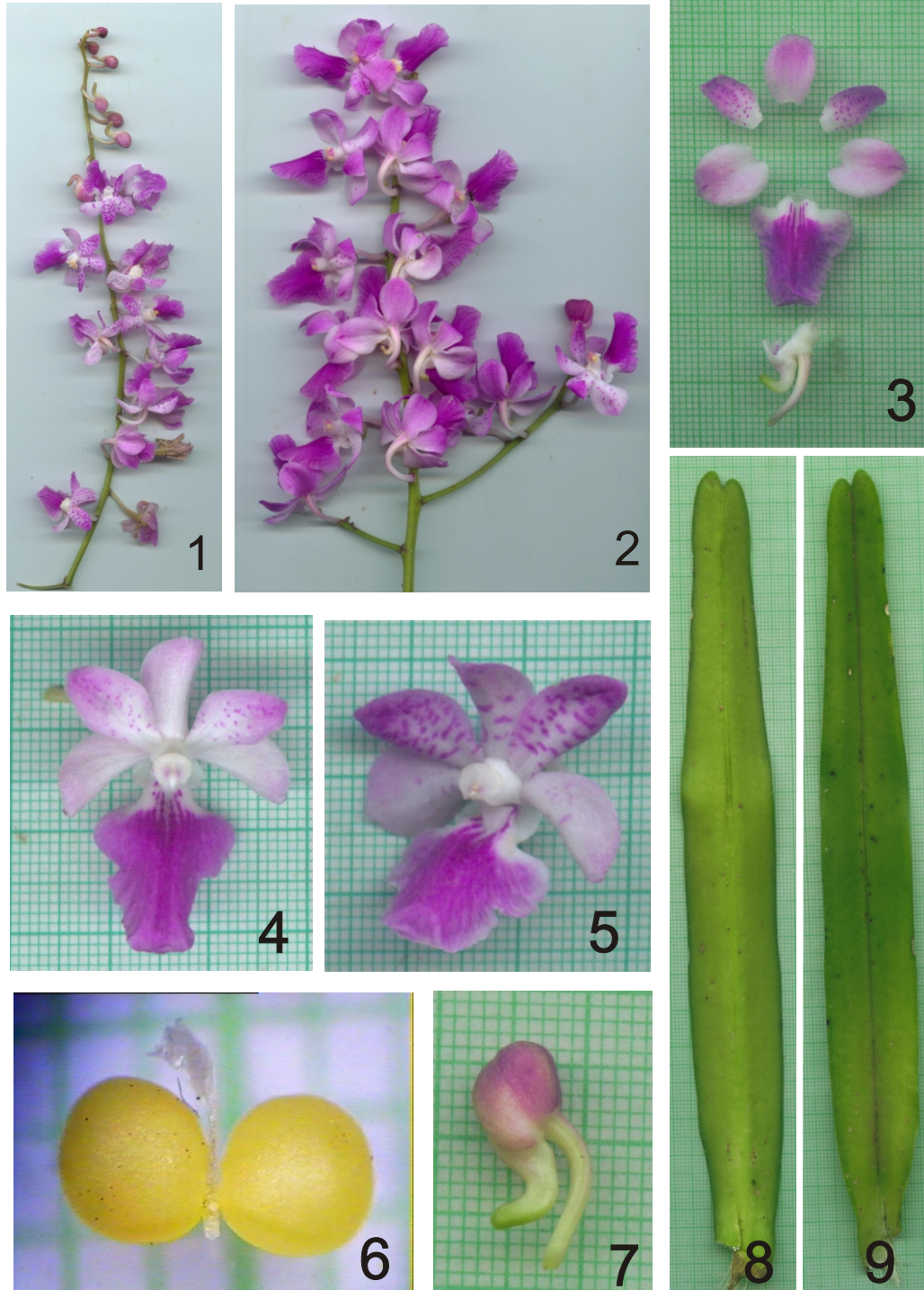
**Haritarium**

Family Code: 579

Species code: 15 - 4B

**Naoroji Godrej Centre for Plant Research**

***Aerides maculosa* Lindl.**



1.&2. Inflorescence, 3.Dissected flower, 4& 5, Floral variation, 6. Pollinia, 7, Flower bud, 8. Leaf - Dorsal view, 9. Leaf - ventral view.



**Haritarium**

Family Code: 579

Species code: 15 - 4C

**Naoroji Godrej Centre for Plant Research**

***Aerides maculosa* Lindl.**





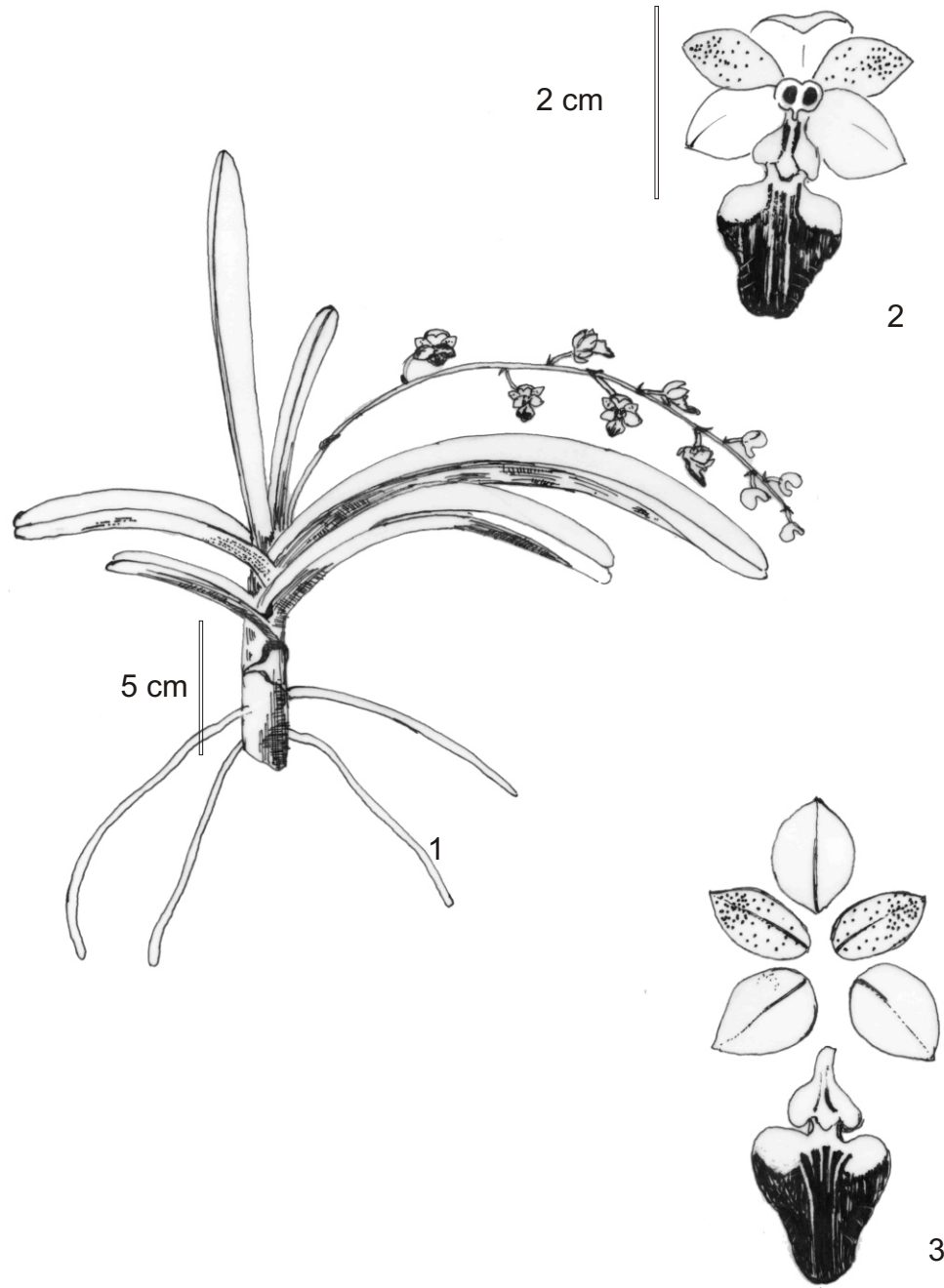
**Haritarium**

Family Code: 579

Species code: 15 - 4D

**Naoroji Godrej Centre for Plant Research**

***Aerides maculosa* Lindl.**



1. Habit, 2.& 3. Flower



**Haritarium**

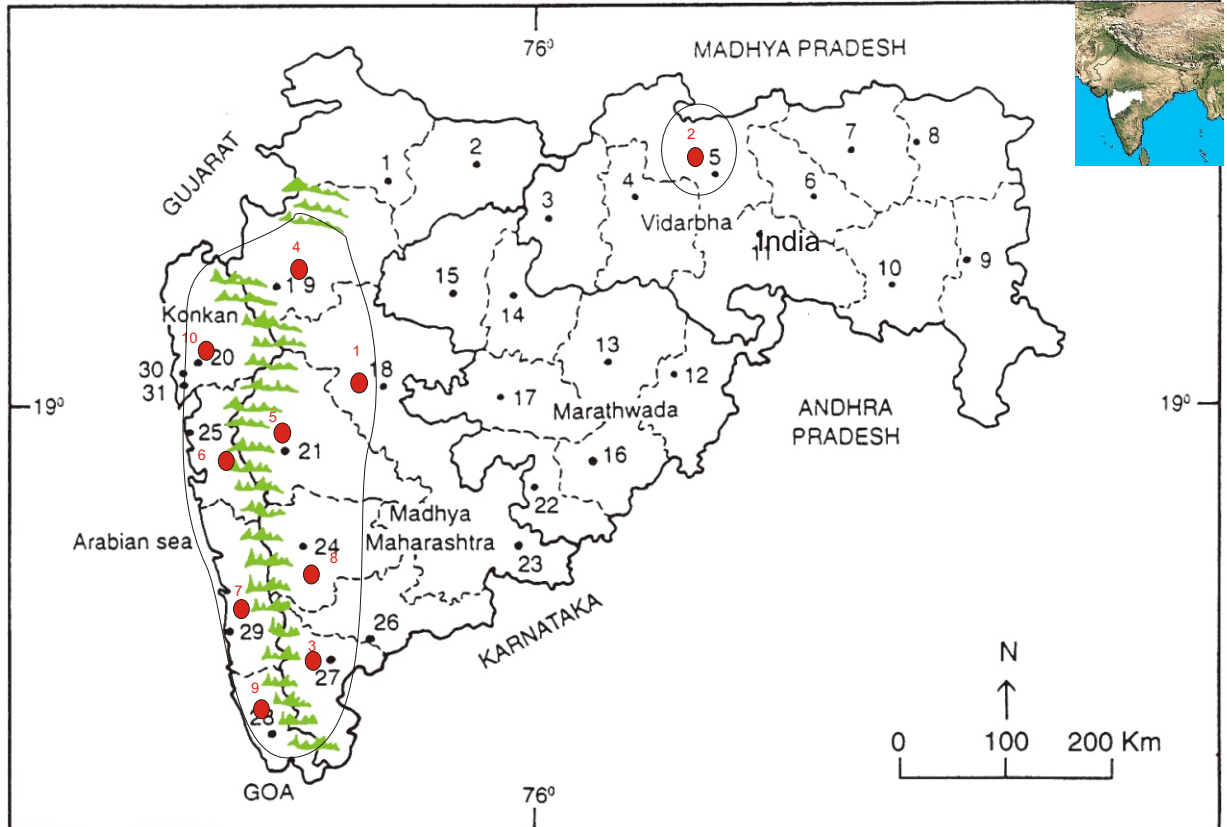
Family Code: 579

Species code: 15 - 4E

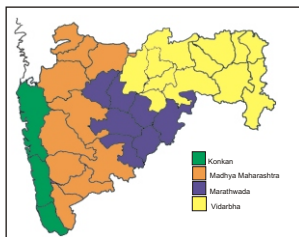
**Naoroji Godrej Centre for Plant Research**

***Aerides maculosa* Lindl.**

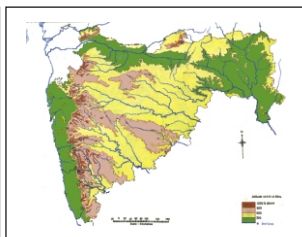
**Location map**



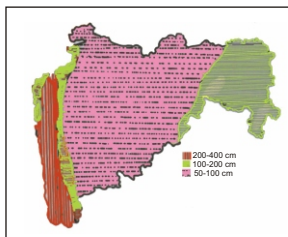
1.Dhule 2.Jalgaon 3. Buldhana 4.Akola 5.Amaravati 6.Wardha 7.Nagpur 8. Bhandara 9. Gadchiroli  
10. Chandrapur 11. Yavatmal 12. Nanded 13. Parbhani 14. Jalna 15. Aurangabad 16.Latur  
17. Beed 18. Ahmadnagar 19 Nashik 20. Thane 21. Pune 22. Osmanabad 23. Solapur 24.Satara  
25. Raigad 26. Sangli 27. Kolhapur 28. Sindhudurg 29. Ratnagiri 30.Mumbai 31.Greater Mumbai.



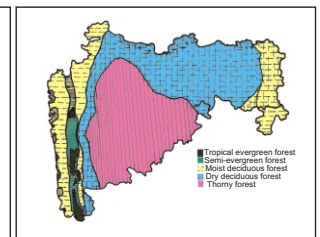
Geographical regions 1



Physical map 2



Rain fall map 3



Forest types 4

Distribution in districts ●

1.Ahmednagar, 2.Amaravati, 3.Kolhapur, 4.Nasik, 5. Pune, 6.Raigad, 7. Ratnagiri, 8. Satara, 9. Sindhurg, 10.Thane.

Geographical distribution:

Latitude (DMS): Between 19 ° 58'- 16 ° 06' & 21° 8'N & Longitude (DMS): 72 ° 58'-74° 43' & 79° 5' E



**Haritarium**

Family Code: 579

Species code: 15 - 4F

**Naoroji Godrej Centre for Plant Research**

**Aerides maculosa Lindl.**

**References:**

Cooke, T. (1904): **The Flora of Presidency of Bombay**. Vol.2: 239. (rep. Ed.1958).

Karthikeyan, S., S.K. Jain, M.P. Nair & M. Sanjappa(1989): **Florae Indicae Enumeratio – Monocotyledonae**, B.S.I., Calcutta:107.

Laxminarasimhan, P.(1996): in B.D. Sharma, S. Karthikeyan & N.P.Singh (eds), **Flora of Maharashtra state, Monocot**. B.S.I., Calcutta:13.

Santapau, H. & Kapadia Z.(1966): **The Orchids of Bombay**: Manager of Publications, Delhi:14

Tetali, *et al.* (2000): **Endemic Plants of India ( A Status Report of Maharashtra State)**. Naoroji Godrej Centre for Plant Research, Shirwal: 79.