



Haritarium

Family Code: 527

Species code: 8 -4A

Naoroji Godrej Centre for Plant Research

Amorphophallus konkanensis Hett., S.R.Yadav & K.S.Patil

Botanical name: *Amorphophallus konkanensis* Hett., S.R.Yadav & K.S.Patil

Vernacular name: -

Family : Araceae

Threatened category: **Low Risk** (Gaikwad & Yadav, 2004).

Key characters: Semi-flattened staminodes and placentation basal.

Description: Herbs. Tubers globose or depressed-globose, producing rhizomatous offsets. Leaf single. Petiole 29-88 cm long. Lamina 40-96 cm in diam.; leaflets 4-19 X 1-4 cm, lanceolate, acuminate at apex. Inflorescence long-peduncled, spathe erect, outside dirty pinkish with brownish hue and faint brownish spots veins dark purplish-brown, inside maroon, base within dark maroon 3-8.5 X 2.3-7.0 cm.; spadix stipitate, 9.5-16.0 cm long. Female flowers congested; male flowers slightly distant. Berries ripen pinkish, 2-4 seeded; seeds subglobose. This species is very much allied to *Synantherium sylvatica* from which it is very difficult to distinguish.

Flowering and fruiting: April- June.

Distribution: India – Endemic to Western Ghats.

Reported Localities: Sindhudurg.

Ecology: Common on laterite soils, near bushes. It is rarely found on partially degraded hill slopes and edges of forest. More frequently in low Altitudes of the coastal region from sea level to below 1000 m.

Association: No specific plant association is observed.



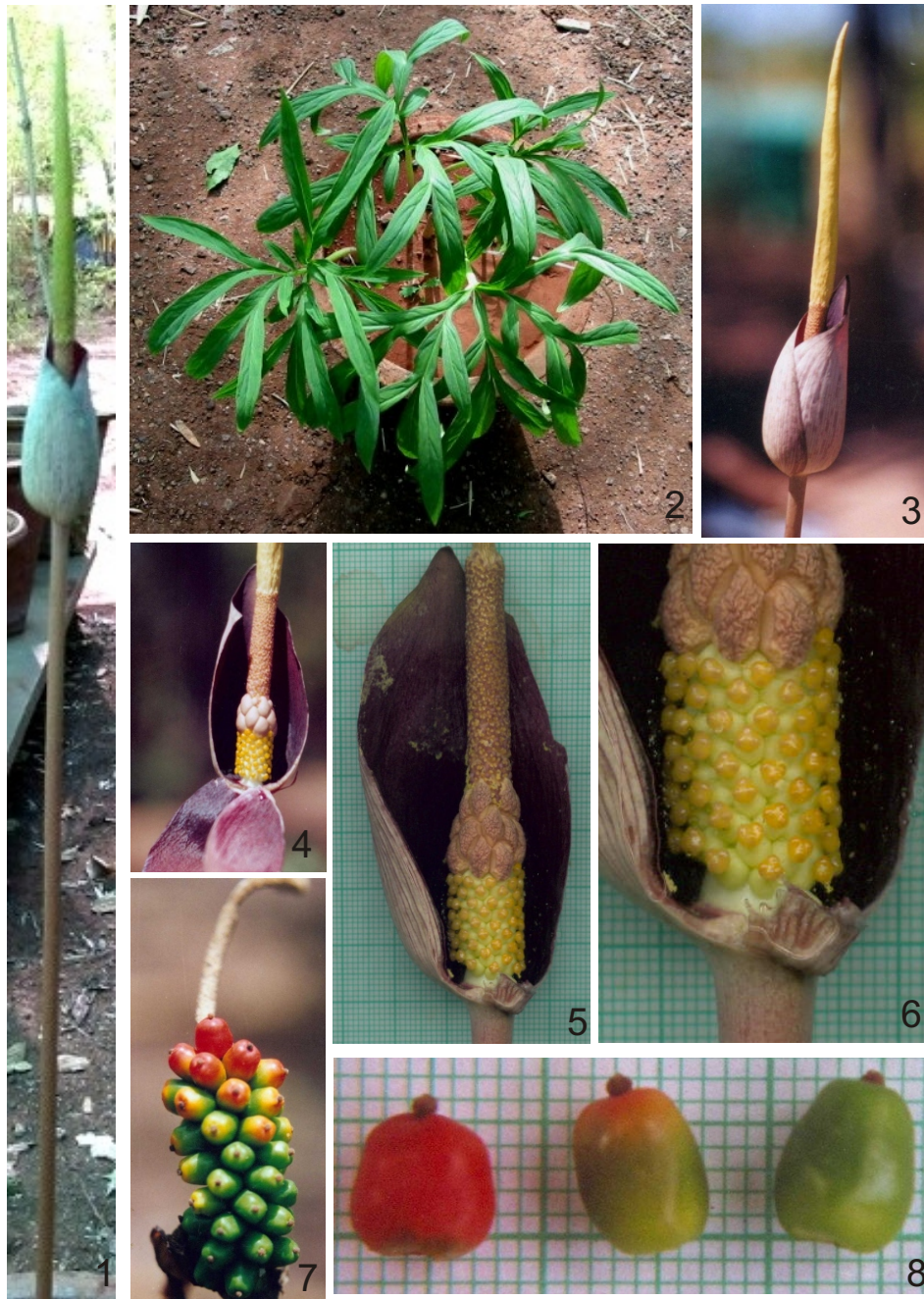
Haritarium

Family Code: 527

Species code: 8 -4B

Naoroji Godrej Centre for Plant Research

***Amorphophallus konkanensis* Hett., S.R.Yadav & K.S.Patil**



1. Long pedunculate spathe, 2. vegetative state, 3. Spathe 4. Dissected spathe, 5&6. Close-up view of dissected spathe. 7 & 8. Fruits.



Haritarium

Family Code: 527

Species code: 8 -4C

Naoroji Godrej Centre for Plant Research

***Amorphophallus konkanensis* Hett., S.R.Yadav & K.S.Patil**





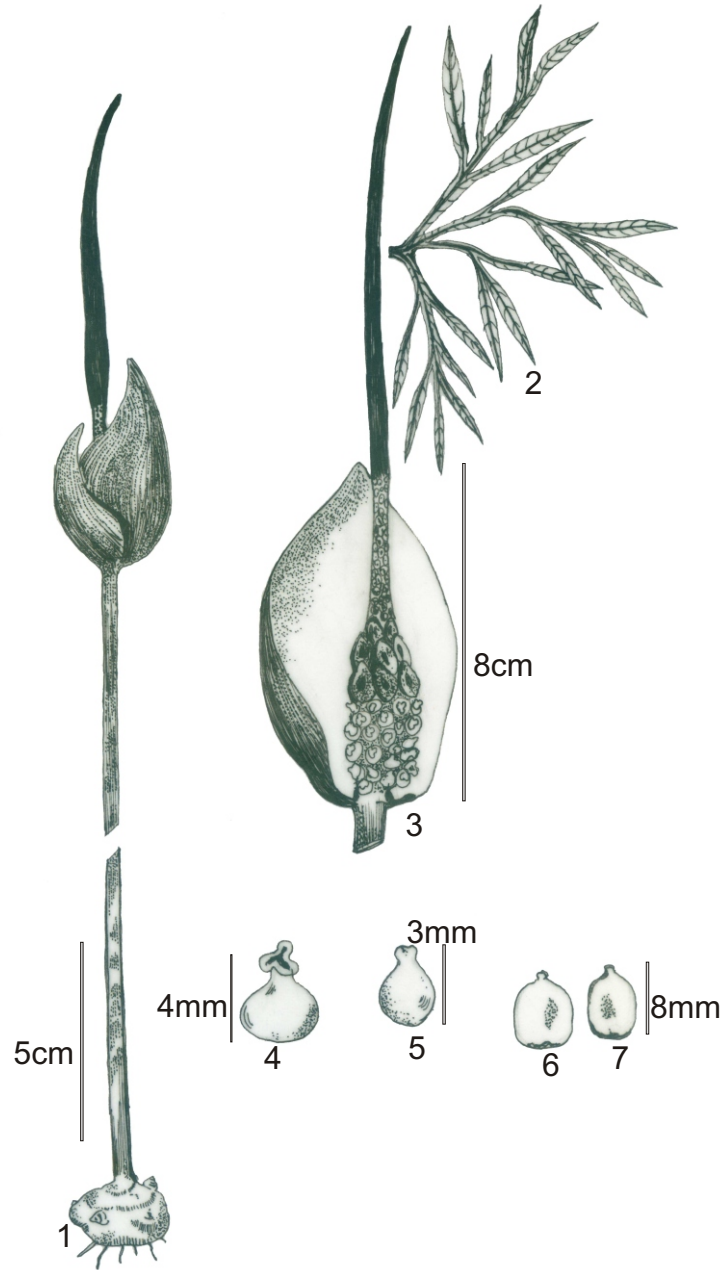
Haritarium

Family Code: 527

Species code: 8 -4D

Naoroji Godrej Centre for Plant Research

***Amorphophallus konkanensis* Hett., S.R.Yadav & K.S.Patil**



1.Habit, 2.Leaf, 3.Spathe, 4.&5.Female flower,6&7.Seed.



Haritarium

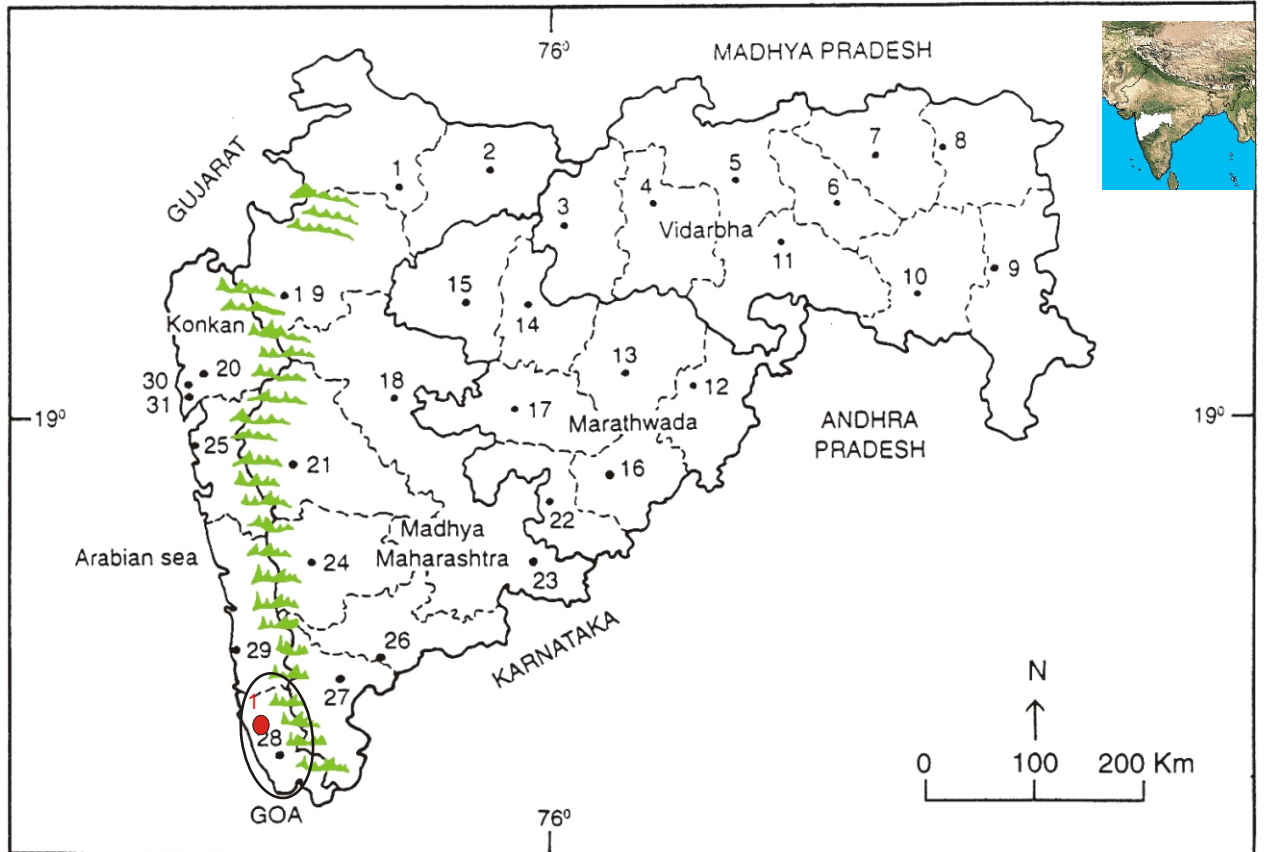
Family Code: 527

Species code: 8 -4E

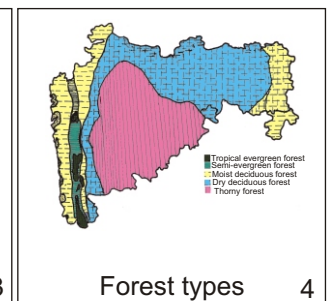
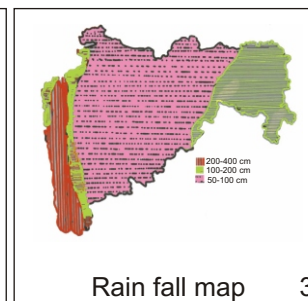
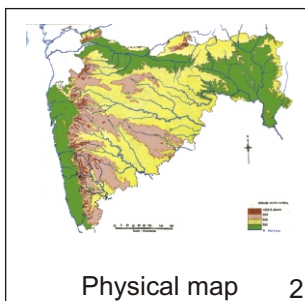
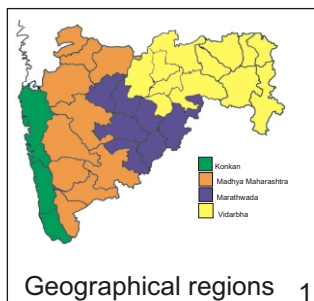
Naoroji Godrej Centre for Plant Research

Amorphophallus konkanensis Hett., S.R.Yadav & K.S.Patil

Location map



1.Dhule 2.Jalgaon 3. Buldhana 4.Akola 5.Amaravati 6.Wardha 7.Nagpur 8. Bhandara 9. Gadchiroli
10. Chandrapur 11. Yavatmal 12. Nanded 13. Parbhani 14. Jalna 15. Aurangabad 16.Latur
17. Beed 18. Ahmadnagar 19 Nashik 20. Thane 21. Pune 22. Osmanabad 23. Solapur 24.Satara
25. Sangli 26. Raigad 27. Kolhapur 28. Sindhudurg 29. Ratnagiri 30.Mumbai 31.Greater Mumbai.



Distribution in following districts ●

1. Sindhudurg.

Geographical distribution in Maharashtra:

Latitude (DMS): 16° 06' - 15° 90' N & Longitude (DMS): 73° 63' - 74° E.



Haritarium

Family Code: 527

Species code: 8 -4F

Naoroji Godrej Centre for Plant Research

Amorphophallus konkanensis Hett., S.R.Yadav & K.S.Patil

References:

Gaikwad S.P. & S.R. Yadav(2004): in T. Pullaiah (ed.)Endemic flowering plant species of Maharashtra and their possible utilization; **Biodiversity in India**, Regancy publications, New Delhi:51.

Laxminarasimhan, P.(1996): in B.D. Sharma, S. Karthikeyan & N.P.Singh (eds), **Flora of Maharashtra state, Monocot**. B.S.I., Calcutta:749.