



Haritarium

Family Code: 527

Species code: 9 - 5A

Naoroji Godrej Centre for Plant Research

Arisaema sahyadicum Yadav S.R. , K.S.Patil, and Bachulkar var. **Sahyadicum**

Botanical name: *Arisaema sahyadicum* Yadav S.R. , K.S.Patil, and Bachulkar var. **Sahyadicum**

Vernacular name: -

Family : Araceae

Threatened category: **Endangered** (Gaikwad & Yadav 2004).

Key characters: Terrestrial plants, spadix sessile, reddish-purple. Spathe 7–13 cm long, short, thick, blunt appendix included in the spathe. Flowers bisexual.

Description: Medium sized herbs. Corms globose, roots fibrous. Leaf single, subpedate, petiole long, upto 35 cm , sheathing base 3 –4 cm long; leaflets 3-8, , obovate to oblong, acuminate at apex, 8-21 X 3-10 cm . Spathes 7 – 13 cm long, brownish red - purple with vertical white striations; spadix sessile, off white, tinged with red, usually bisexual, when unisexual, the are staminate, 4.5 –7.5 cm. Pistillate flowers many ; staminate flowers shortly stalked. Fruits, 4-5 seeded, ripen red, 6 X 7 mm.

Flowering and fruiting: May - July.

Distribution: India – Maharashtra- Sindhudurg.

Localities: Sindhudurg.

Ecology: Shade loving, occasionally found in the edges of the mixed forest. Altitude ranges between 900-1200m above sea level.

Association: No specific plant association is observed.



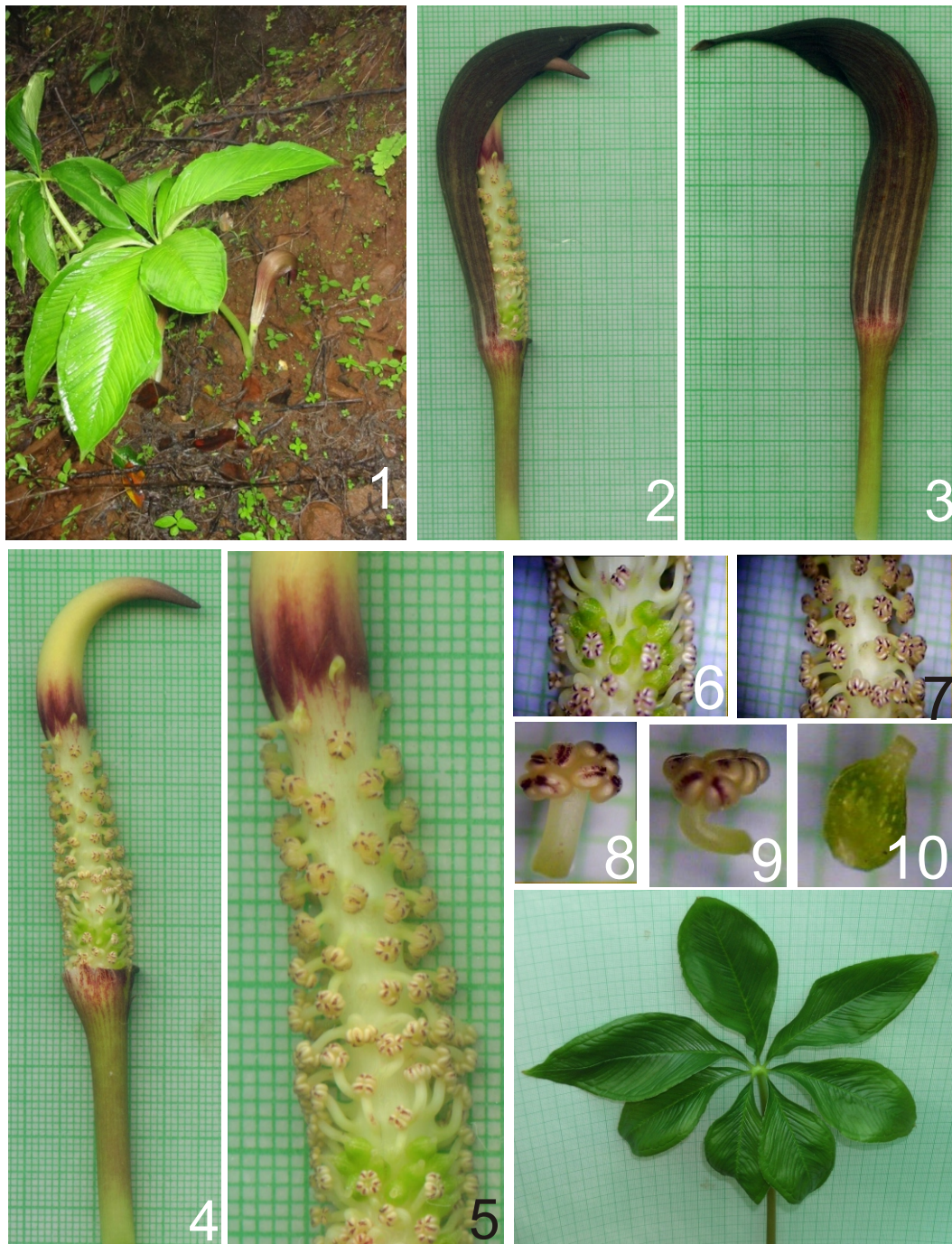
Haritarium

Family Code: 527

Species code: 9 - 5B

Naoroji Godrej Centre for Plant Research

***Arisaema sahydricum* var. *Sahydricum* Yadav S.R. , K.S.Patil, and Bachulkar**



1.Habitat, 2 - 5. Spadix, 6. Female flower 7.-9. Male flower, 10. Gynoecium, 11. Leaf.



Haritarium

Family Code: 527

Species code: 9 - 5C

Naoroji Godrej Centre for Plant Research

***Arisaema sahydricum* var. *Sahyadricum* Yadav S.R. , K.S.Patil, and Bachulkar**





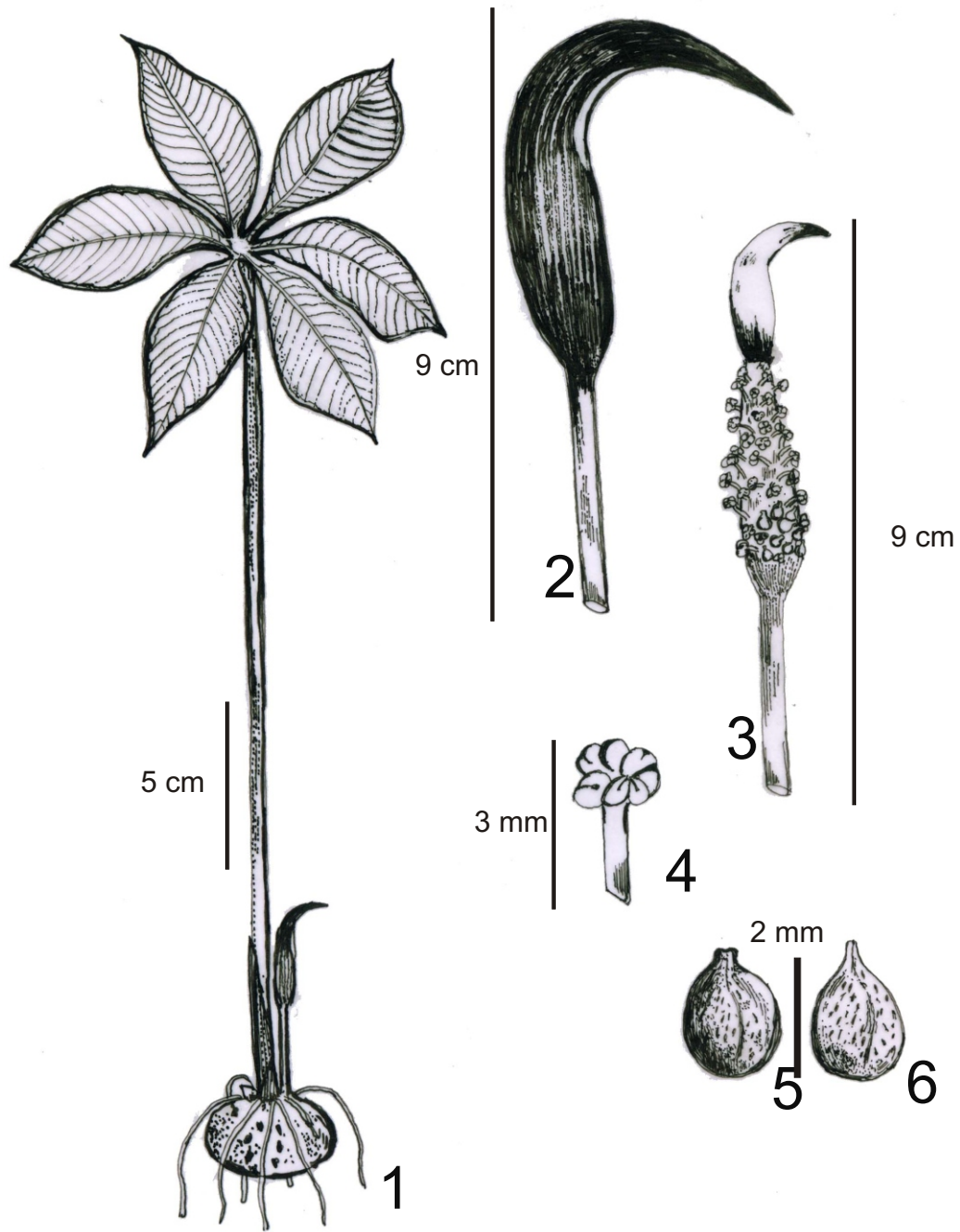
Haritarium

Family Code: 527

Species code: 9 - 5D

Naoroji Godrej Centre for Plant Research

***Arisaema sahydricum* var. *Sahyadricum* Yadav S.R. , K.S.Patil, and Bachulkar**



1.Habit, 2.Spathe, 3. Spadix, 4. Male flowers, 5. &6. Female flowers



Haritarium

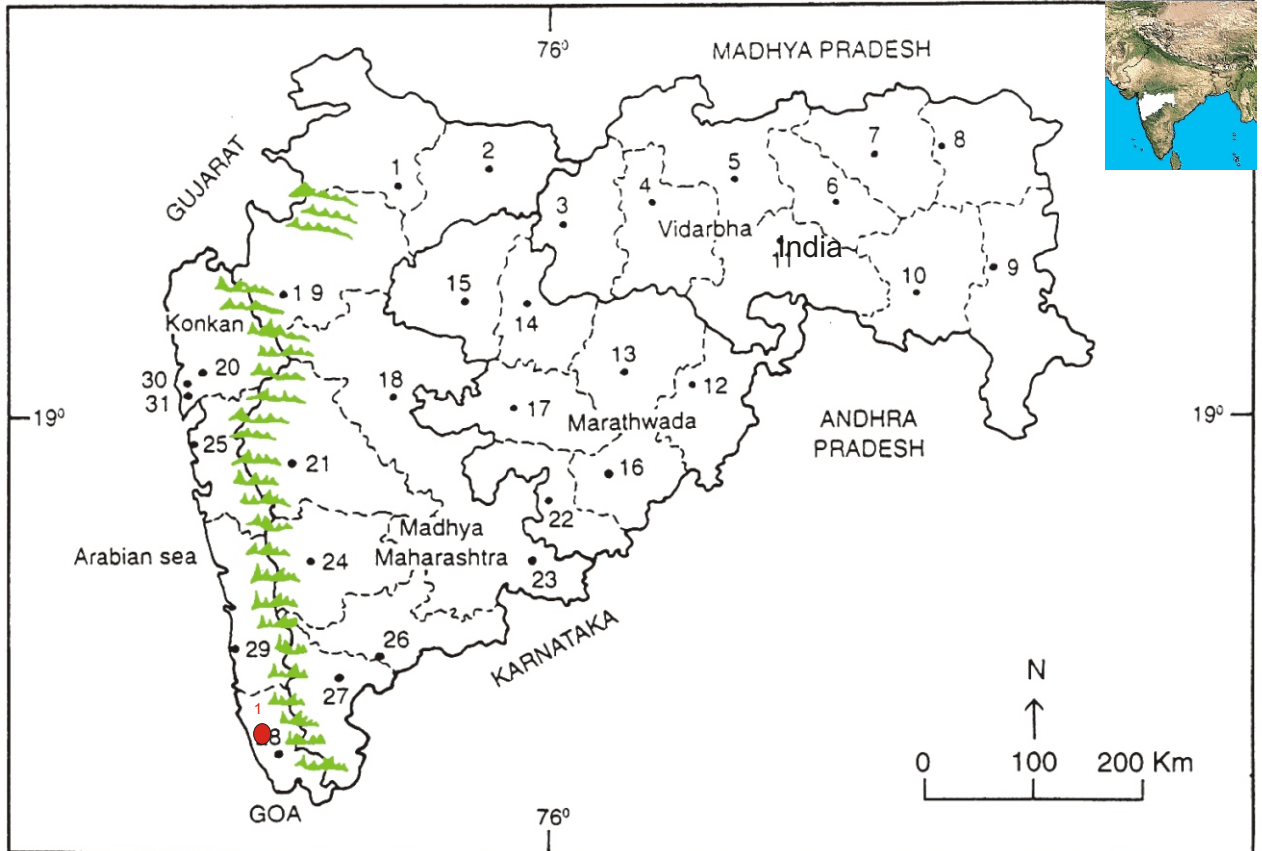
Family Code: 527

Species code: 9 - 5E

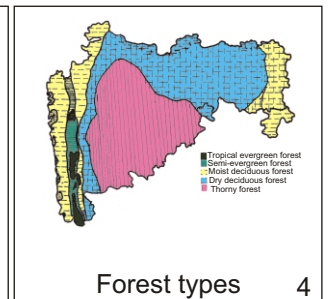
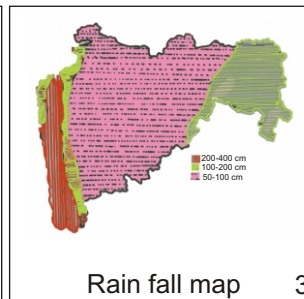
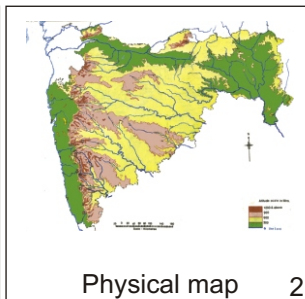
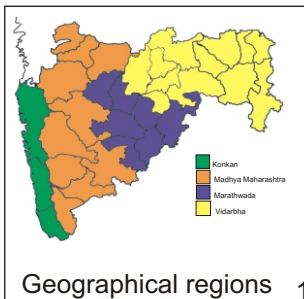
Naoroji Godrej Centre for Plant Research

Arisaema sahydricum var. Sahydricum Yadav S.R. , K.S.Patil, and Bachulkar

Location map



1.Dhule 2.Jalgaon 3. Buldhana 4.Akola 5.Amaravati 6.Wardha 7.Nagpur 8. Bhandara 9. Gadchiroli
10. Chandrapur 11. Yavatmal 12. Nanded 13. Parbhani 14. Jalna 15. Aurangabad 16.Latur
17. Beed 18. Ahmadnagar 19 Nashik 20. Thane 21. Pune 22. Osmanabad 23. Solapur 24.Satara
25. Raigad 26. Raigad 27. Kolhapur 28. Sindhudurg 29. Ratnagiri 30.Mumbai 31.Greater Mumbai.



Distribution- ●

A. Sindhudurg

Geographical distribution:

Latitude (DMS): Between 17 ° 41'- 15 ° 90' N & Longitude (DMS): 73 ° 55'-73 ° 81'E;



Haritarium

Family Code: 527

Species code: 9 - 5F

Naoroji Godrej Centre for Plant Research

Arisaema sahydricum var. **Sahyadricum** Yadav S.R. , K.S.Patil, and Bachulkar

References:

- Gaikwad S.P. & S.R. Yadav(2004): in T. Pullaiah (ed.)Endemic flowering plant species of Maharashtra and their possible utilization; **Biodiversity in India**, Regancy publications, New Delhi:51
- Laxminarasimhan, P.(1996): in B.D. Sharma, S. Karthikeyan & N.P.Singh (eds), **Flora of Maharashtra state, Monocot**. B.S.I., Calcutta:750.
- Mishra D.K. & N.P. Singh (2001) :Endemic and Threatened Flowering Plants of Maharashtra, B.S.I., Calcutta: 248.
- Tetali, P. *et al.* (2000): **Endemic Plants of India (A Status Report of Maharashtra State)**. Naoroji Godrej Centre for Plant Research, Shirwal: 60.
- Yadav, S.R.(1997): Endemic plants of peninsular India with special reference to Maharashtra, in Pokle D.S., S.P. Kanir & V.N. Naik (eds.) **Proceedings, VII IAAT Annual Meet and National Conference**, Aurangabad:47.
- Yadav, S.R., K.S., Patil & M.P. Bachulkar(1993): *Arisaema sahyadricum*(Araceae), a new species from India. *Willdenowia* 23: 177-179.