



Haritarium

Family Code: 35

Species code: 14 -1A

Naoroji Godrej Centre for Plant Research

Bidaria khandalense (Santapau.) A.P.Jagtap & N.P.Singh

Botanical name: *Bidaria khandalense* (Santapau) A.P.Jagtap & N.P.Singh
(=*Gymnema khandalense* Sant.)

Vernacular name: -

Family : Asclepiadaceae

Threatened category: Vulnerable (Gaikwad & Yadav, 2004), Endangered
(Sarma & Sastri, 2003)

Key characters: Stems woody with broadly corky wings, Leaves broadly ovate, Corolla puberulous on both sides, campanulate, lobes hairy inside, Ridges of corona without fleshy processes.

Description: Large woody climbers,, cylindrical, with broad corky wings and dirty yellow latex. Young branches densely pubescent, slightly swollen at nodes. Leaves petiolate, 8-12 X 7-9 cm, broadly ovate, densely pubescent on upper surface, glabrous at length, tomentose on lower, with numerous glands at base of midvein on upper side, apex acute, base rounded. Flowers in lateral, umbellate, globose cymes. Peduncles, pedicels and calyx pubescent without; corolla yellow, about 5 cm across, corolla lobes campanulate, pubescent, equaling the tube. Corona of 5 hairy somewhat obscure ridges on the corolla tube. Staminal column arising from the base of corolla tube tips obtuse pollen masses erect, oblong, subsessile, gynostegium about 2 mm long. Follicles 8-10 X 0.5 cm, lanceolate, densely pubescent.

Flowering and fruiting: Oct - January.

Distribution: India: Endemic to Northern Western Ghats.

Reported Localities: Kolhapur, Pune, Raigad districts.

Ecology: Occasionally found in the moist deciduous forests of Ghat areas and in sacred groves. Grows in altitudes between 600-1200m.

Association: No specific plant association is observed.



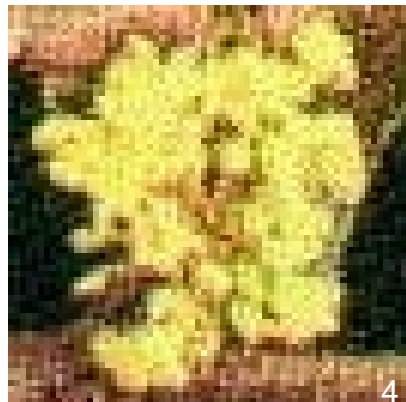
Haritarium

Family Code: 35

Species code: 14 -1B

Naoroji Godrej Centre for Plant Research

Bidaria khandalense (Santapau.) A.P.Jagtap & N.P.Singh



1.Habit, 2. Stem, 3.T.S. Of Bark, 4. Inflorescence, 5. Leaf.



Haritarium

Family Code: 35

Species code: 14 -1C

Naoroji Godrej Centre for Plant Research

Bidaria khandalense (Santapau.) A.P.Jagtap & N.P.Singh





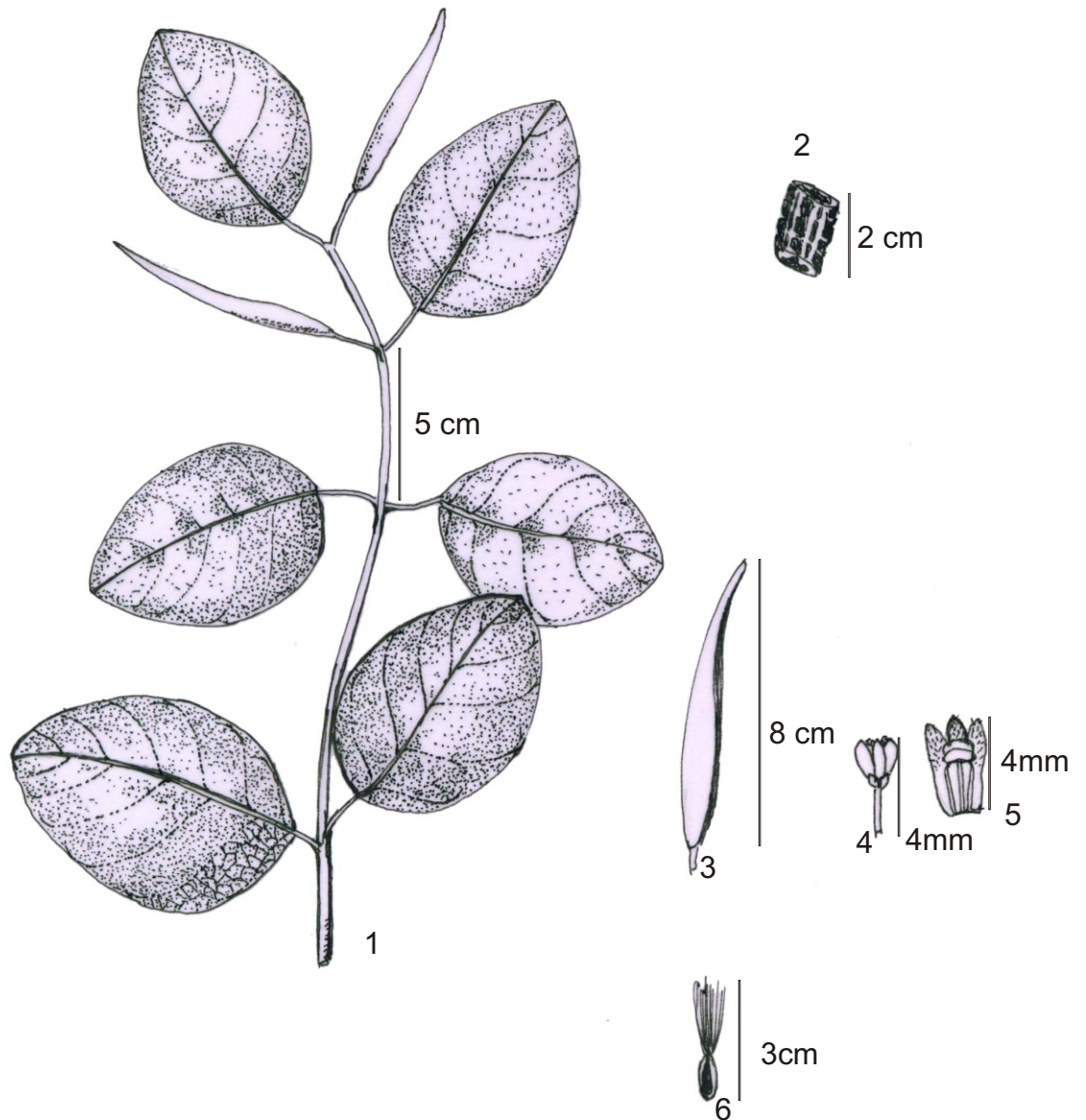
Haritarium

Family Code: 35

Species code: 14 -1D

Naoroji Godrej Centre for Plant Research

Bidaria khandalense (Santapau.) A.P.Jagtap & N.P.Singh



1. Habit, 2. Stem, 3. Pod, 4. Flower, 5. L.S. Of flower, 6. Seed.



Haritarium

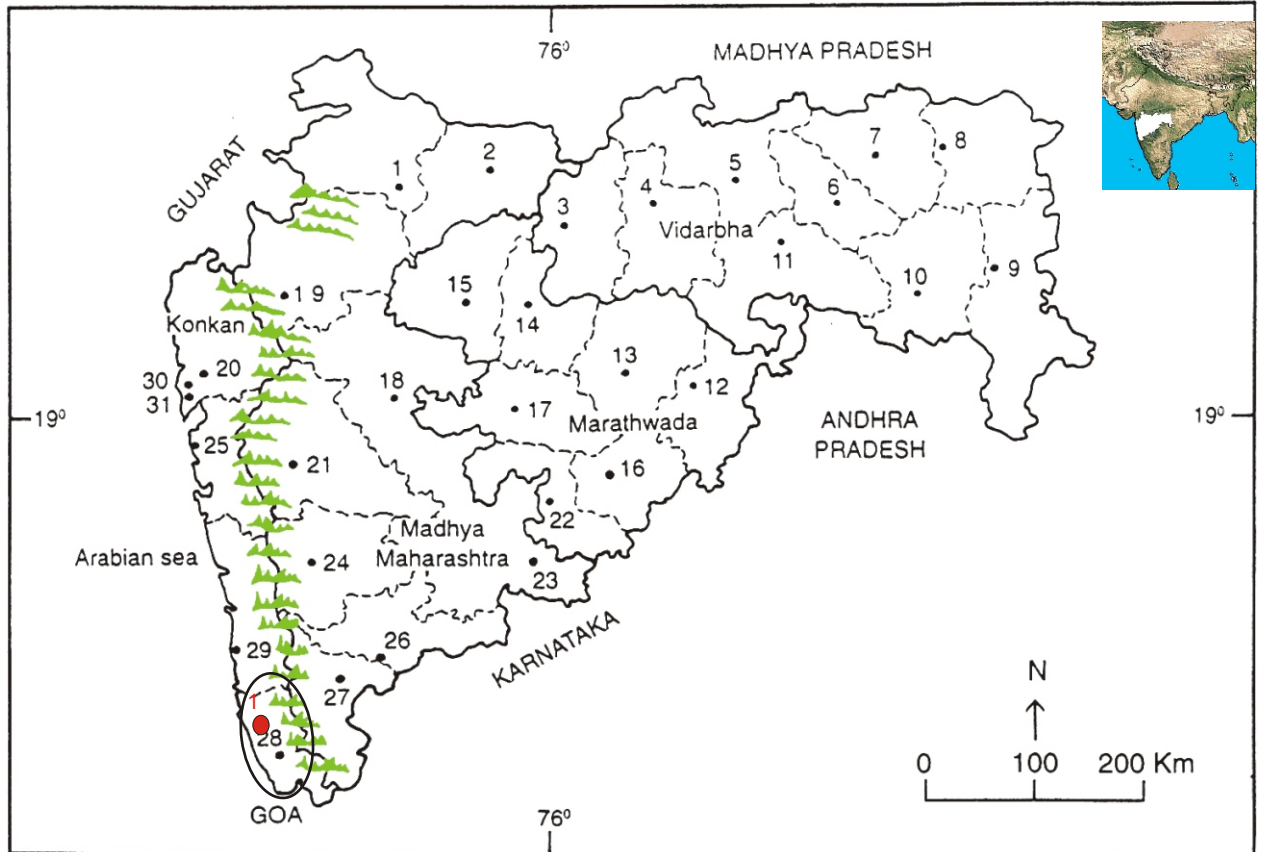
Family Code: 35

Species code: 14 -1E

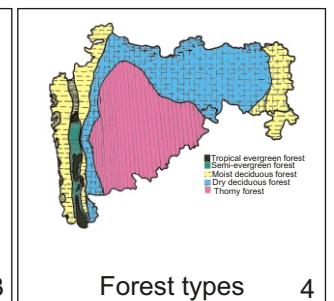
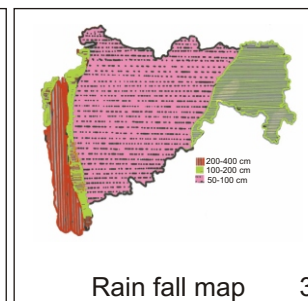
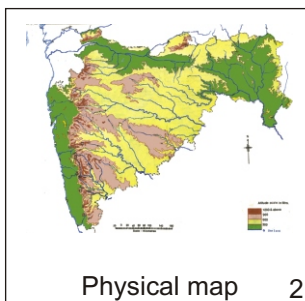
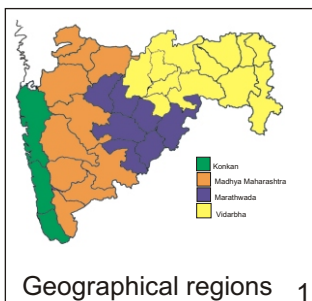
Naoroji Godrej Centre for Plant Research

Bidaria khandalense (Santapau.) A.P.Jagtap & N.P.Singh

Location map



1.Dhule 2.Jalgaon 3. Buldhana 4.Akola 5.Amaravati 6.Wardha 7.Nagpur 8. Bhandara 9. Gadchiroli
10. Chandrapur 11. Yavatmal 12. Nanded 13. Parbhani 14. Jalna 15. Aurangabad 16.Latur
17. Beed 18. Ahmadnagar 19 Nashik 20. Thane 21. Pune 22. Osmanabad 23. Solapur 24.Satara
25. Sangli 26. Raigad 27. Kolhapur 28. Sindhudurg 29. Ratnagiri 30.Mumbai 31.Greater Mumbai.



Distribution in following districts ●

1. Sindhudurg.

Geographical distribution in Maharashtra:

Latitude (DMS): 16° 06' - 15° 90' N & Longitude (DMS): 73° 63' - 74° E.



Haritarium

Family Code: 35

Species code: 14 -1F

Naoroji Godrej Centre for Plant Research

Bidaria khandalense (Santapau.) A.P.Jagtap & N.P.Singh

References:

- Gaikwad S.P. & S.R. Yadav(2004): in T. Pullaiah (ed.)Endemic flowering plant species of Maharashtra and their possible utilization; **Biodiversity in India**, Regancy publications, New Delhi:43.
- Jagtap, Ajit, P. & N.P.Singh (1990): Two new combinations in the genus Bidaria of family Asclepiadaceae. *Biovigyanum* 16(1):62.
- Kothari, M.J. & S. Moorthy(1993). **The Flora of Raigad district, Maharashtra State.**, Botanical Survey of India, Calcutta:236.
- Nayar, M.P.& A.R.K. Sastry (1987): **Red Data Book on Indian Plants.**, (eds), B.S.I. Calcutta Vol.3:38.
- Santapau, H. & N.A. Irani (1962): The Asclepiadaceae and Periplocaceae of Bombay. *Univ. Bombay Bot. Mem.* 4.
- Singh N.P. & S. Karthikeyan (2000):(eds), **Flora of Maharashtra state, Dicotyledones.**Vol. 2: . B.S.I., Calcutta:337
- Tetali,P.*et al.* (2000): Endemic Plants of India (A Status Report of Maharashtra State). Naoroji Godrej Centre for Plant Research, Shirwal: 31.