



**Haritarium**

Family Code: 35

Species code: 6- 3A

**Naoroji Godrej Centre for Plant Research**

**Brachystelma naorojii P.Tetali, D.K.Kulk., S.Tetali & Kumbh.**

**Botanical name:** *Brachystelma naorojii* P.Tetali, D.K.Kulk., S.Tetali & Kumbh.

**Vernacular name:** Hamman batata, Hanuman batata

**Family :** Ascepiadaceae

**Threatened category:** Critically endangered (Mishra & Singh, 2001, Gaikwad & Yadav 2004)

**Key characters:** Tubers large, 4X9cm, leaves ovate-oblong to ovate-lanceolate, flowers brick red, turns reddish violet, hairs on corolla lobes white, follicle 6cm long.

**Description:** A slender erect perennial, herb, 30-55 cm in height. Roots tuberous, round or ovate when young, flattened in mature plants, fleshy, 7-9 x 4-6 cm. Stems glaucous green, occasionally tinged with purple, usually unbranched with deltoid leaf scales, sparingly pubescent, occasionally with adpressed hairs. Latex watery, yellowish-green, bitter. Internode between first and second pair of leaves 5-30 cm long, the first pair of leaves always smaller, about 3-6 cm from above the tuber, one of the opposite leaves in the pair is always small. Leaves sessile, opposite-decussate, glabrous above and pale beneath, lamina 1.5-9 x 0.5-4 cm, lanceolate, ovate-oblong or ovate-lanceolate, apex acuminate, margin ciliate, hairs swollen at base. Flowering nodes with opposite, 2-3 mm long scale leaves. Flowers bracteate, two, on either side of the scale leaf, green turning to brick red, reddish-violet and finally to reddish-purple, darker and puberulous within, hairs white. Pedicels 5-7 mm long, sparsely hairy. Calyx 5-partite, lobes 5, 1.5-2 mm long. Corolla deeply 5-lobed, lobes 0.9-1 cm long, thickly hairy on the inner side. Corona cupular, 5-lobed, lobes with long white hairs, margin dark purple, lower portion of the corona white, 2.3-3 x 3 mm, sparsely hairy, obtusely five angled, coronal lobes produced into 5 inner lobes incumbent and adpressed on the stamen. Stamens 5, pollinia globose, yellow 405 µm long, style-apex pentagonal. Follicles single or in pairs, 6 cm long, tapering at the apex. Seeds comose, dark brown with light brown margin, 0.8-1 cm long, coma silky white, upto 2 cm long.

**Flowering and fruiting:** April – June.

**Distribution:** Endemic to Maharashtra

**Reported Localities:** Satara (1. Pandav dhara - Shindewadi near Shirawal)

**Ecology:** On partially degraded hill slopes and open hilltops among grasses.

**Association:** Grass species and other herbs mostly ephemerals; Naturally occurs between 500-700 m altitude. *B. naorojii* is clearly distinguished from *B. Malawanensis* by broadly ovate leaves, moderately purple hair and white small pods.



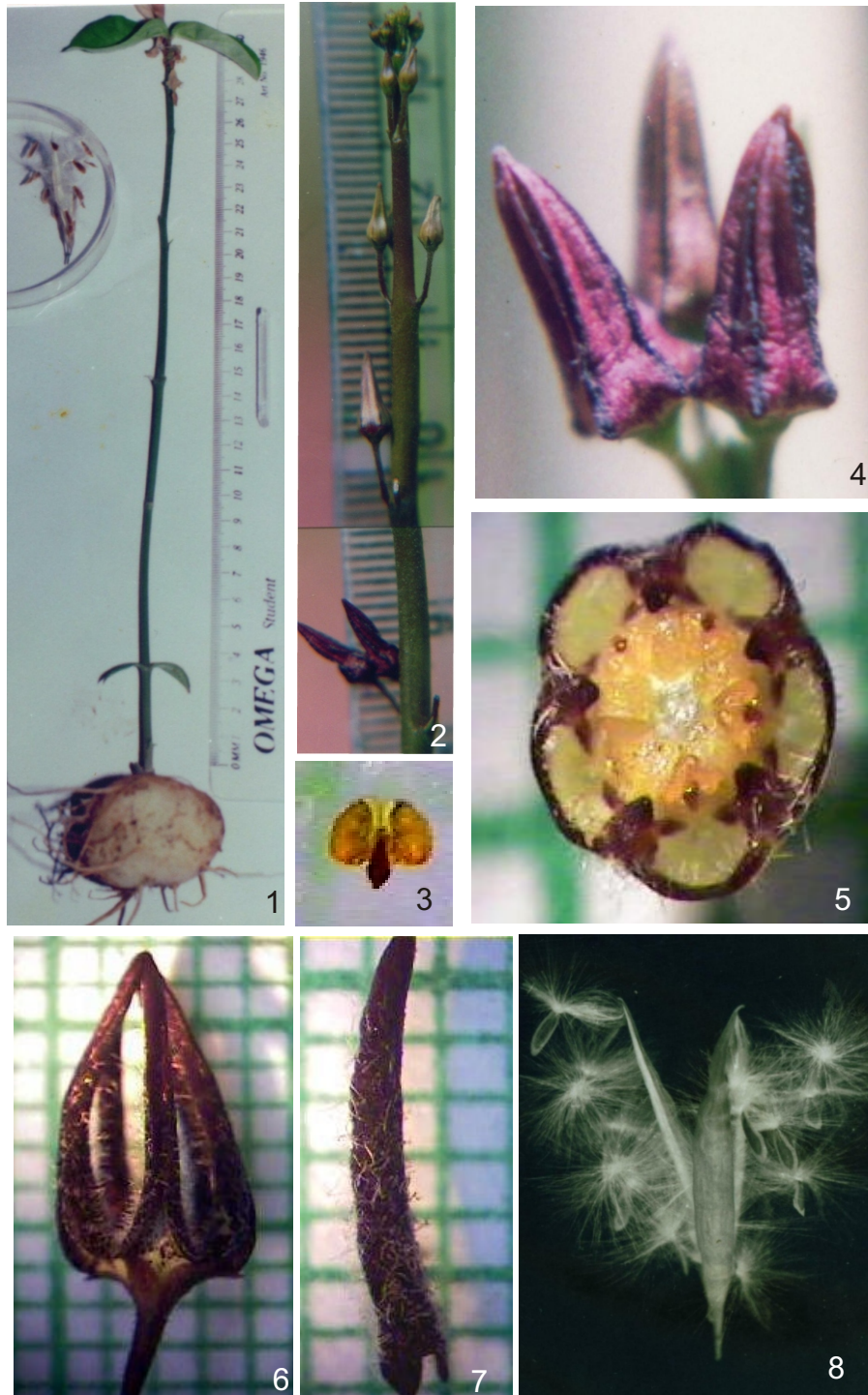
**Haritarium**

Family Code: 35

Species code: 6- 3B

**Naoroji Godrej Centre for Plant Research**

**Brachystelma naorojii P.Tetali, D.K.Kulk., S.Tetali & Kumbh.**



1.Habit,2.Inflorescence, 3.Pollinia, 4.flower, 5.Corona6. Flower. ,7. White hairs on corolla lobe, 8. Follicle .



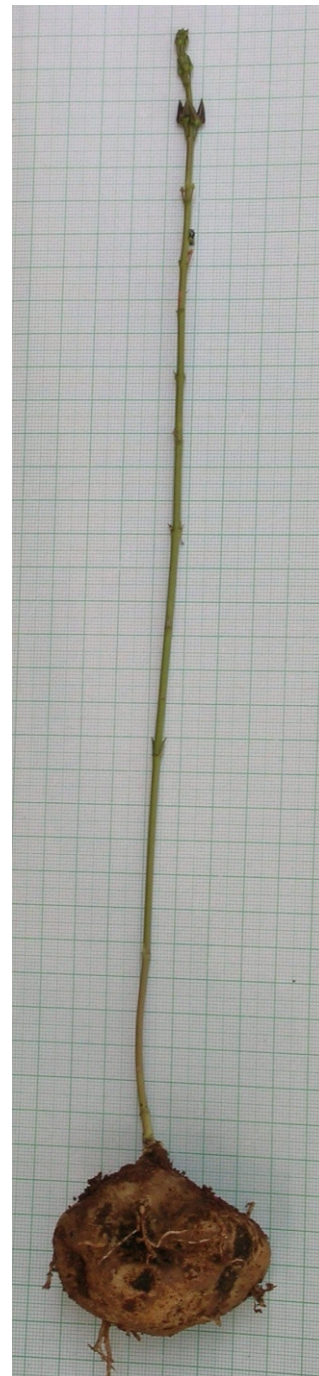
**Haritarium**

Family Code: 35

Species code: 6- 3C

**Naoroji Godrej Centre for Plant Research**

**Brachystelma naorojii P.Tetali, D.K.Kulk., S.Tetali & Kumbh.**





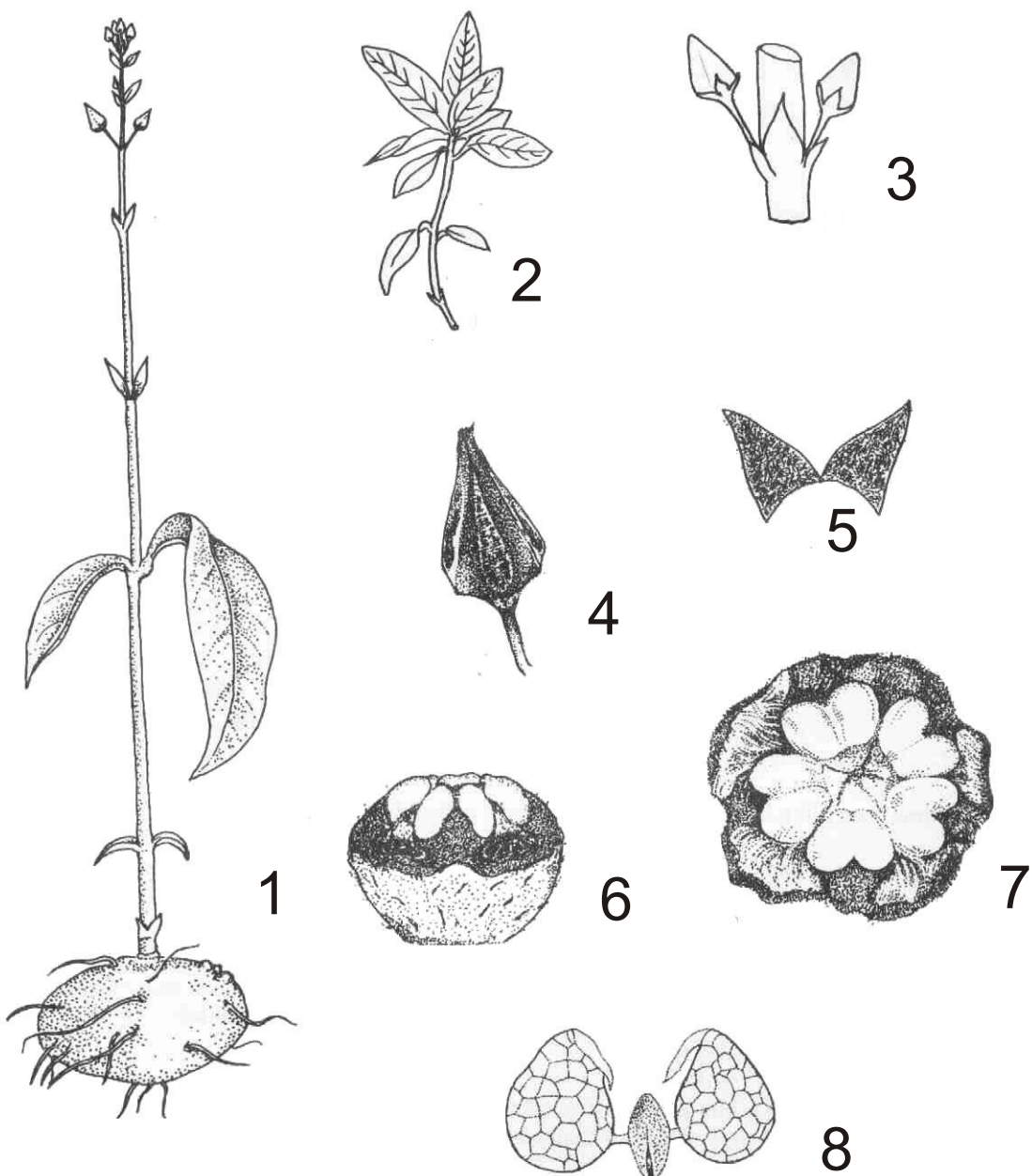
**Haritarium**

Family Code: 35

Species code: 6- 3D

**Naoroji Godrej Centre for Plant Research**

***Brachystelma naorojii* P.Tetali, D.K.Kulk., S.Tetali & Kumbh.**



1.Habit- Flowering stage, 2.Habit- Vegetative stage, 3.Bracteate flowers, 4.Opened flower, 5.Corona - inner view, 6.Corona - lateral view, 7.Pollinium.



**Haritarium**

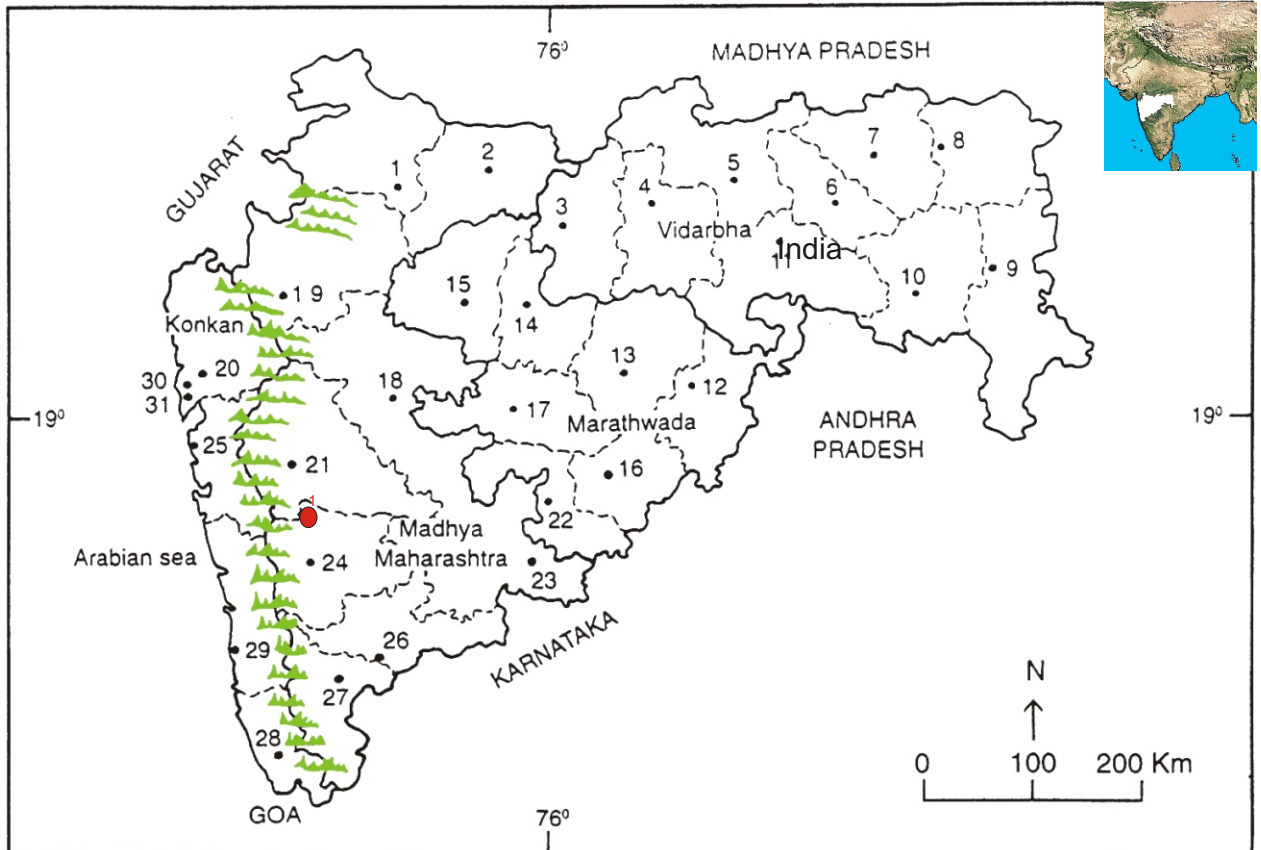
Family Code: 35

Species code: 6- 3E

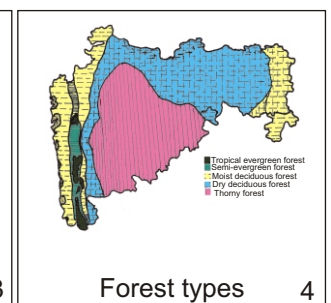
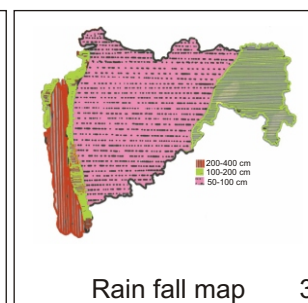
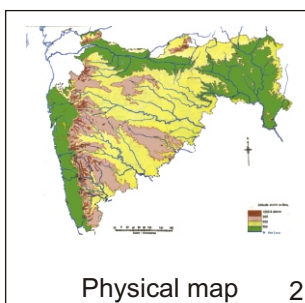
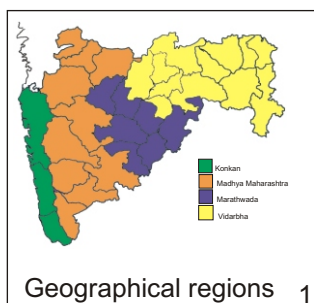
**Naoroji Godrej Centre for Plant Research**

**Brachystelma naorojii P.Tetali, D.K.Kulk., S.Tetali & Kumbh.**

Location map



1.Dhule 2.Jalgaon 3. Buldhana 4.Akola 5.Amaravati 6.Wardha 7.Nagpur 8. Bhandara 9. Gadchiroli  
10. Chandrapur 11. Yavatmal 12. Nanded 13. Parbhani 14. Jalna 15. Aurangabad 16.Latur  
17. Beed 18. Ahmadnagar 19 Nashik 20. Thane 21. Pune 22. Osmanabad 23. Solapur 24.Satara  
25. Raigad 26.Sangli 27. Kolhapur 28. Sindhudurg 29. Ratnagiri 30.Mumbai 31.Greater Mumbai.



Localities- ●

A.Satara (1-Gavade wadi near Shinde wadi).

Geographical distribution

Latitude(DMS)17° 07' 60 N &Longitude(DMS)73° 58' 0E



**Haritarium**

Family Code: 35

Species code: 6- 3F

**Naoroji Godrej Centre for Plant Research**

**Brachystelma naorojii** P.Tetali, D.K.Kulk., S.Tetali & Kumbh.

References:

Gaikwad S.P. & S.R. Yadav(2004): T. Pullaiah (ed.)Endemic flowering plant species of Maharashtra and their possible utilization; **Biodiversity in India**, Regancy publications, New Delhi:43.

Karthikeyan, S., S.K. Jain, M.P. Nayar & M. Sanjappa. (1989): Florae Indicae Enumeratio: Monocotyledonae, B.S.I, Calcutta.

Mishra, D.K & N.P. Singh (2001): Endemic & Threatened flowering plants of Maharashtra, B.S.I., Calcutta.:129

Singh N.P. & S. Karthikeyan (2001): **Flora of Maharashtra**. Vol.2., B.S.I. India, Calutta: 341.

Tetali, P., D.K.Kulkarni, Sujata Tetali and M.S. Kumbhojkar (1998): A New species of Brachystelma R.Br. (Asclepiadaceae) From Maharashtra, Rheedea, vol.8(1):75-77.

Tetali, P., Sujala Tetali, B.C. Kulkarni, P.V. Prasanna, P. Lakshminarasimhan, Manish Laic, M.S., Kumbhojkar, O.K. Kulkarni & A.P. Jagtap.(2000). Endemic Plants of India (A Status report of Maharashtra State). Naoroji Godrej Centre for Plant Research, Shindewadi.