



Haritarium

Family Code: 1

Species code: 13- 1A

Naoroji Godrej Centre for Plant Research

Calacanthus grandiflorus (Dalzell) Radlk.

Botanical name: **Calacanthus grandiflorus** (Dalzell) Radlk.
(=*Lepidagathis grandiflora* Dalz., *Calacanthus dalzelliana* T. Anders. Ex Bth. & Hook.)

Vernacular name: -

Family: Acanthaceae

Threatened category: Low risk (Gaikwad & Yadav, 2004)

Key characters: Corolla two lipped, lobes twisted to the left in bud. Stamens-4, anthers not spurred at the base. Ovules two in each cell. Capsule -4 seeded, seeds supported on a hard, upward curved retinacula.

Description: Shrubs, 1-2 m high, gregarious; stems quadrangular. Leaves 12-20 X 5-7.8 cm, elliptic, base tapering, apex acuminate, entire slightly ciliate. Flowers bluish-purple, in 3-15 cm long terminal spikes from upper axils. Capsules 1.5-2 X 0.8 cm, obovoid, compressed, base narrowed, apex acute, pubescent. Seeds about 0.7 cm across, hairy, yellowish.

Flowering and fruiting: September-June.

Distribution: India – Endemic to Peninsular and central India.

Reported Localities: Pune, Raigad, Ratnagiri, Satara, Sindhudurg, Thane.

Ecology: Occasional along beds of dried streamlets and shady areas of higher ghats, between 500-1000m altitude.

Association: No specific plant association is observed.



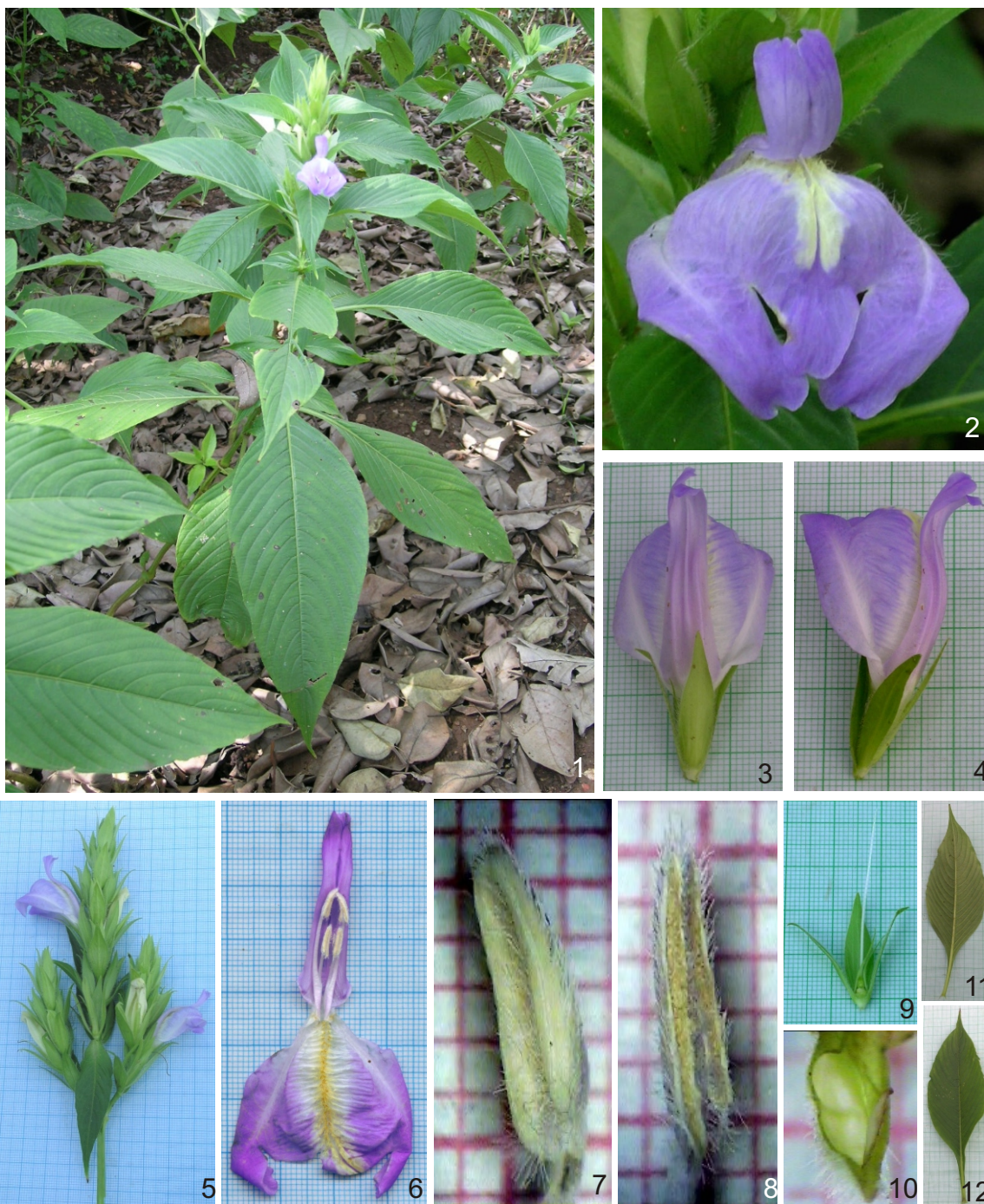
Haritarium

Family Code: 1

Species code: 13- 1B

Naoroji Godrej Centre for Plant Research

***Calacanthus grandiflorus* (Dalzell) Radlk.**



1.Habit,2.,3.,& 4.Single flower, 5. Inflorescence, 6. Dissected flower, 7.&8. Anthers, 9.Gynoecium, 10. Capsule, 11. Leaf- Dorsal view, 12. Leaf- Ventral view.



Haritarium

Family Code: 1

Species code: 13- 1C

Naoroji Godrej Centre for Plant Research

***Calacanthus grandiflorus* (Dalzell) Radlk.**





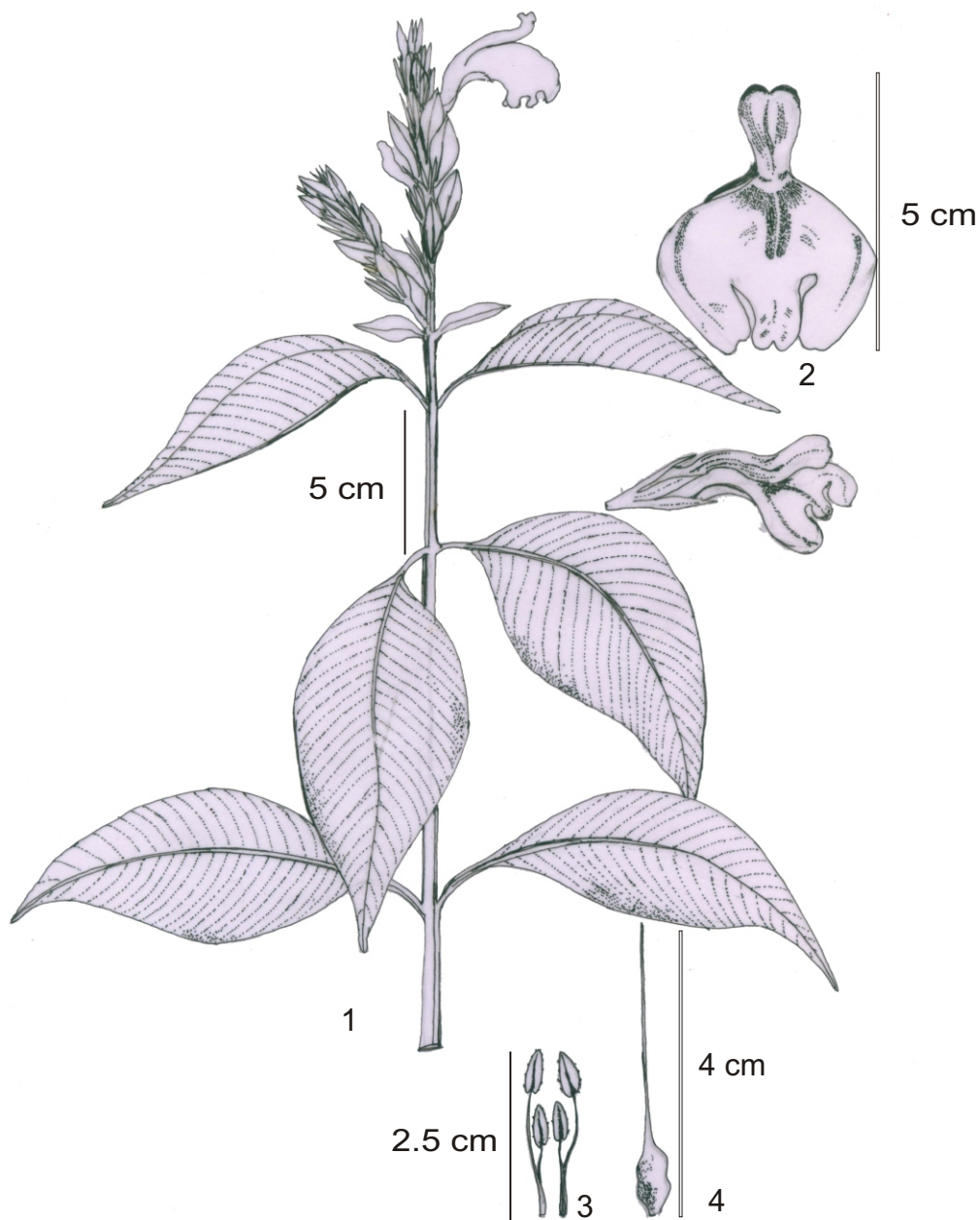
Haritarium

Family Code: 1

Species code: 13- 1D

Naoroji Godrej Centre for Plant Research

***Calacanthus grandiflorus* (Dalzell) Radlk.**



1. Habit, 2. Flower, 3. Anthers, 4. Gynoecium



Haritarium

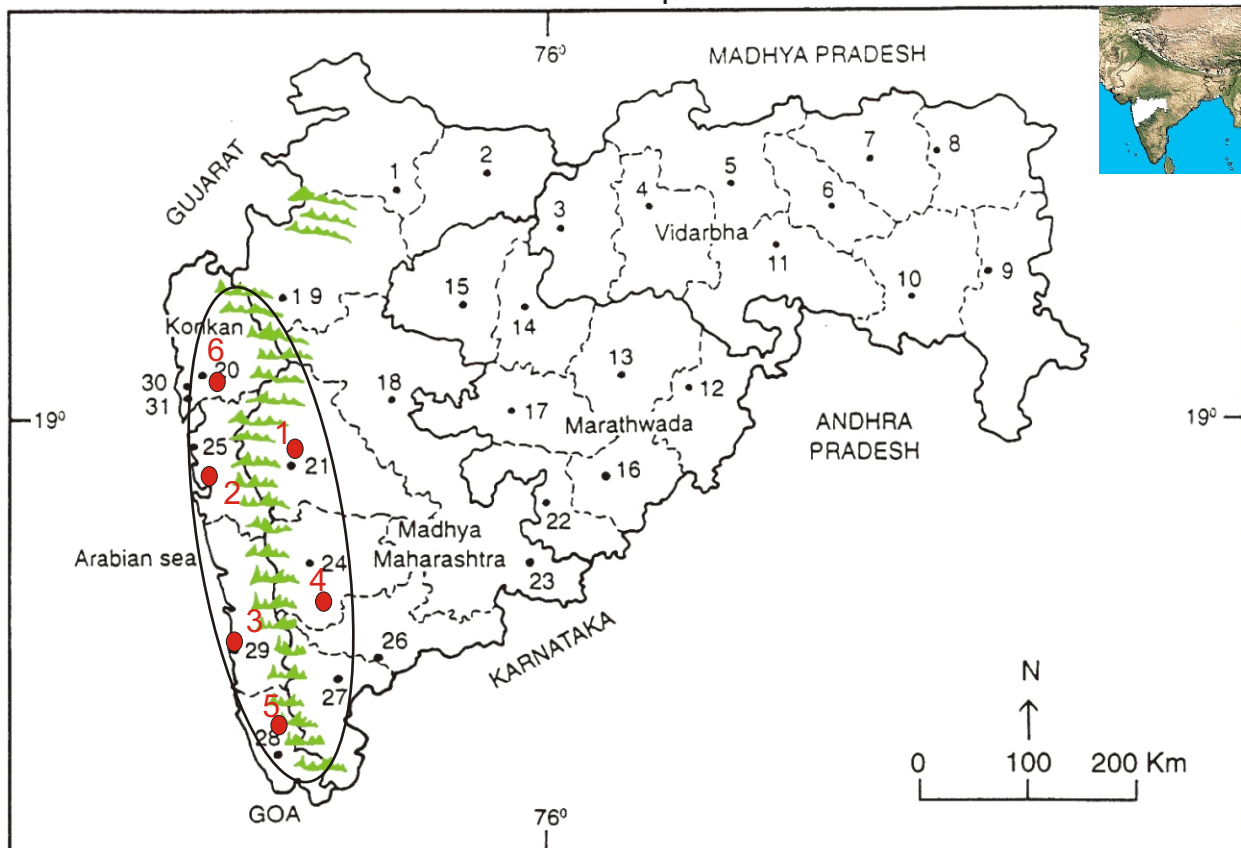
Family Code: 1

Species code: 13- 1E

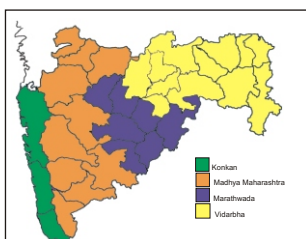
Naoroji Godrej Centre for Plant Research

Calacanthus grandiflorus (Dalzell) Radlk.

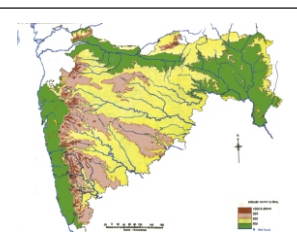
Location map



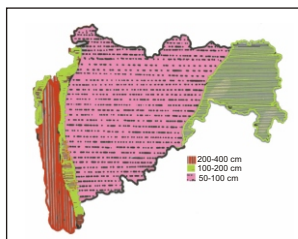
1.Dhule 2.Jalgaon 3. Buldhana 4.Akola 5.Amaravati 6.Wardha 7.Nagpur 8. Bhandara 9. Gadchiroli
10. Chandrapur 11. Yavatmal 12. Nanded 13. Parbhani 14. Jalna 15. Aurangabad 16.Latur
17. Beed 18. Ahmadnagar 19 Nashik 20. Thane 21. Pune 22. Osmanabad 23. Solapur 24.Satara
25. Raigad 26.Sangli 27. Kolhapur 28. Sindhudurg 29. Ratnagiri 30.Mumbai 31.Greater Mumbai.



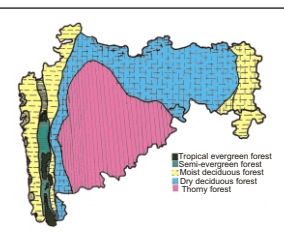
Geographical regions 1



Physical map 2



Rain fall map 3



Forest types 4

Distribution districts:- ●

1.Pune, 2.Raigad, 3.Ratnagiri, 4.Satara, 5.Sindhudurg, 6.Thane

Geographical distribution in Maharashtra:

Latitude (DMS): Between 19° 11' -16° 49' N & Longitude (DMS): 72° 52' -74° E.



Haritarium

Family Code: 1

Species code: 13- 1F

Naoroji Godrej Centre for Plant Research

Calacanthus grandiflorus (Dalzell) Radlk.

References:

Cooke. T (1904): **Flora of Presidency of Bombay**. Vol.2: 450(rep. Ed.1967).

Gaikwad S.P. & S.R. Yadav(2004): in T. Pullaiah (ed.)Endemic flowering plant species of Maharashtra and their possible utilization; **Biodiversity in India**, Regancy publications, New Delhi:46.

Hooker, J.D. *et al.*(1884):**The flora of British India**. London. Vol.4: 478.

Singh N.P. & S. Karthikeyan (2000):(eds), **Flora of Maharashtra state, Dicotyledones**.Vol. 2: . B.S.I., Calcutta:609.

Tetali, *et al.* (2000): **Endemic Plants of India (A Status Report of Maharashtra State)**. Naoroji Godrej Centre for Plant Research, Shirwal: 40.