



Haritarium

Family Code: 348

Species code: 3 - 2A

Naoroji Godrej Centre for Plant Research

Cristisonia lawii Wight

Botanical name: *Chirstisonia lawii* Wight

Vernacular name: -

Family : Orobanchaceae

Threatened category: Endemic

Key characters: Root parasite, flower in racemes, pedicels short about 0.5 cm.

Description: Fleshy parasitic herbs, Stems several very stout, 4 – 10 cm long, thickened upwards, densely clothed with imbricate dark brown scales which become larger upwards. Flowers from the upper scales; pedicels 0.5 cm, no bracteoles, Calyx 1.3 cm long, tubular, teeth 5, triangular, acute. Corolla minutely pubescent on both sides, reaching 5 cm long, tubular, the tube dull white, the limb bluish-purple outside, yellow inside; limb sub-bilabiate, the 2 upper lobes erect, the 3 lower horizontal, all sub equal, dull white with purple tinge, rounded at the apex and with slightly waved margins. Stamens didynamous, the lower pair much shorter than the upper, filaments inserted below the middle tube. Anthers 2 celled, One cell is fertile and other is sterile, fertile cell ovate with subulate apex and a pore, the sterile cell, subulate, shaped like a inverted comma. Ovary 1-celled, style longer than the stamens, white glabrous; stigma with 2 rounded lobes; placentas 2.

Flowering and fruiting: July – August.

Distribution: India

Reported Localities: Mumbai, Pune, Satara, Thane.

Ecology: Growing as a root parasite on *Pleocaulus ritchiei* (C.B.Cl.) Bremek. on Kas plateau. Altitude ranges between 600-1200m.

Association: *Pleocaulus ritchiei*, *Carvia callosa*



Haritarium

Family Code: 348

Species code: 3 - 2B

Naoroji Godrej Centre for Plant Research

***Cristisonia lawii* Wight**



1



2



3



4



5

1.Habit,2.Flower,3.Dissected Flower,4.Flower close-up
Anthers



Haritarium

Family Code: 348

Species code: 3 - 2C

Naoroji Godrej Centre for Plant Research

***Cristisonia lawii* Wight**





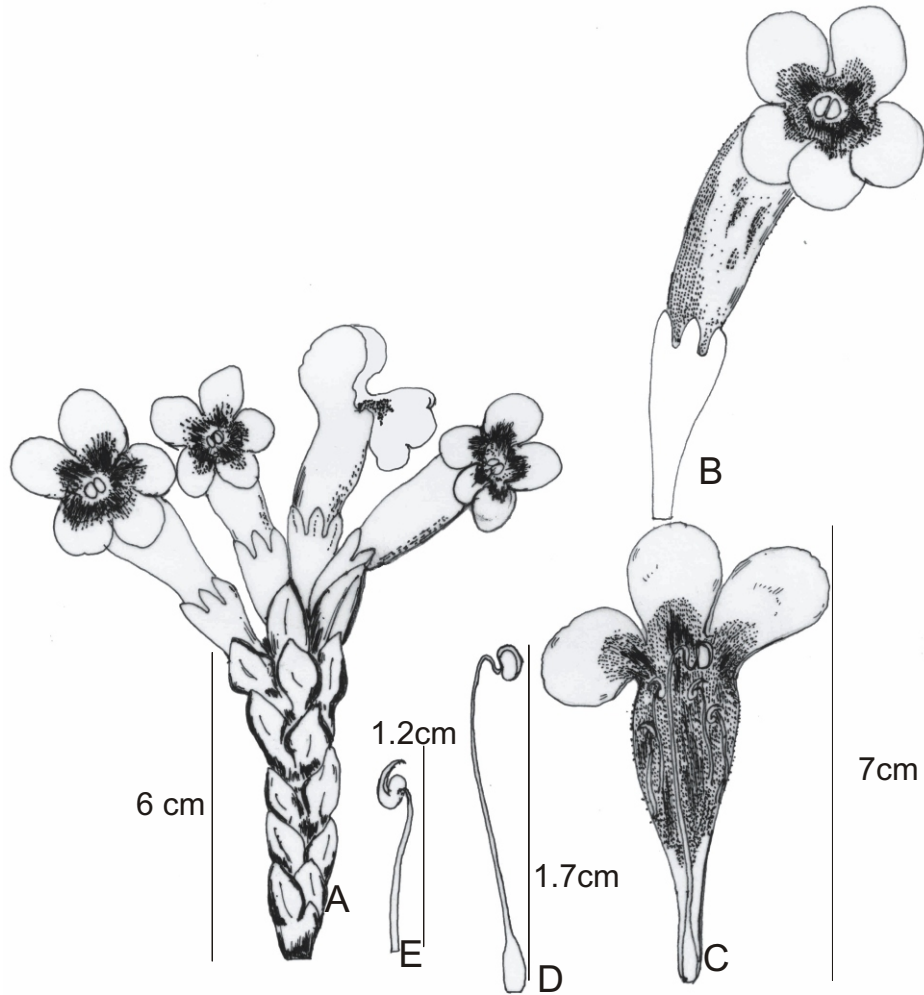
Haritarium

Family Code: 348

Species code: 3 - 2D

Naoroji Godrej Centre for Plant Research

***Cristisonia lawii* Wight**



A.Habit, B.Flower, C.Dissected Flower, D.&E. Stamen



Haritarium

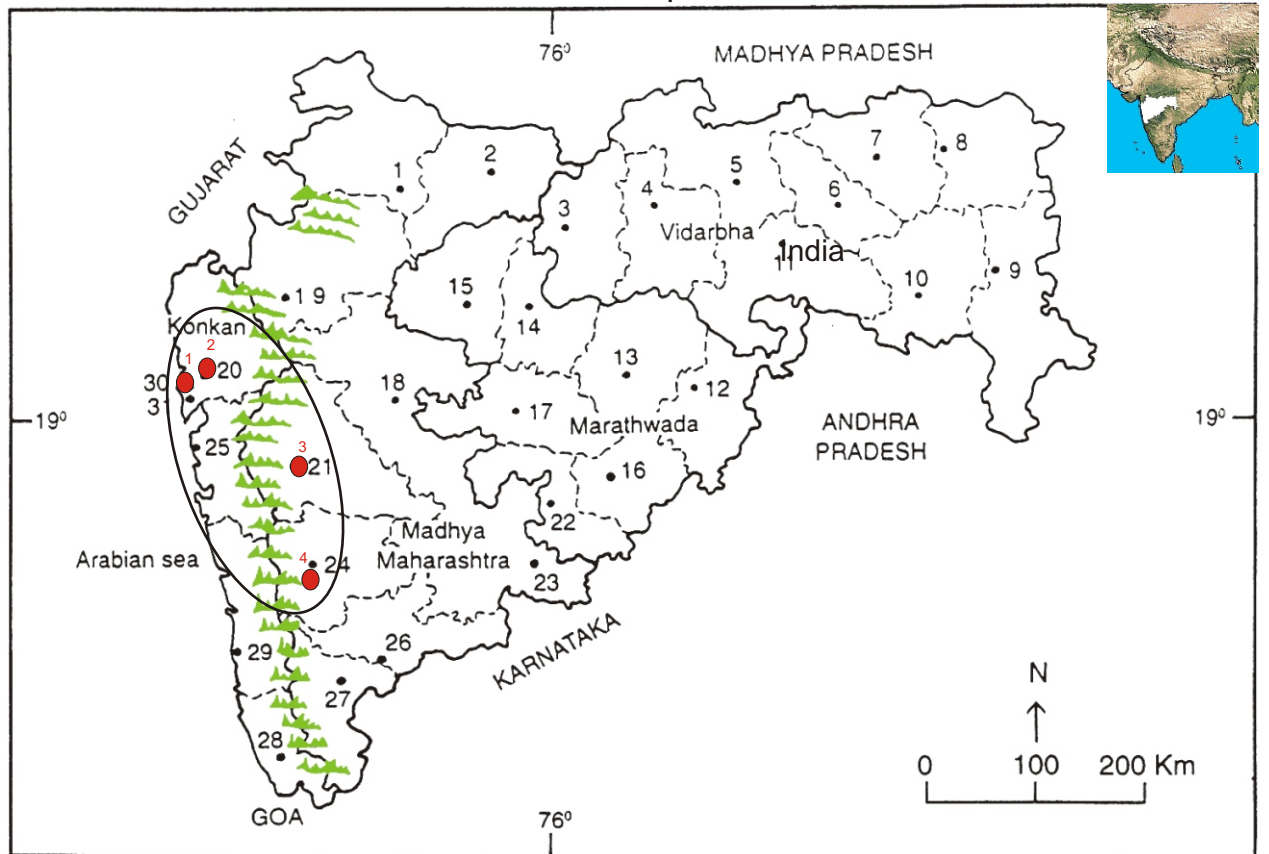
Family Code: 348

Species code: 3 - 2E

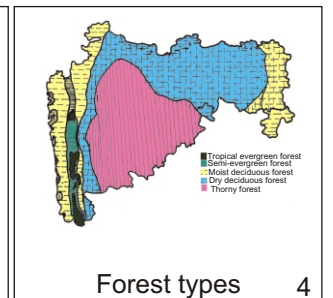
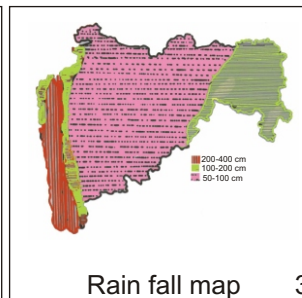
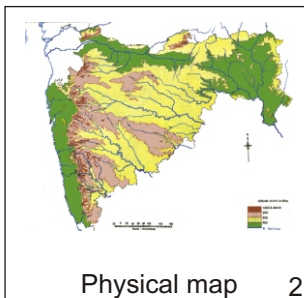
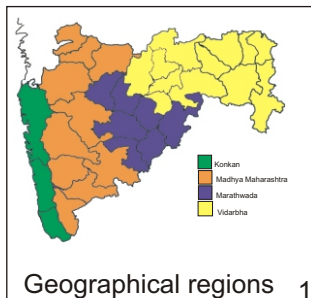
Naoroji Godrej Centre for Plant Research

Cristisonia lawii Wight

Location map



- 1.Dhule 2.Jalgaon 3. Buldhana 4.Akola 5.Amaravati 6.Wardha 7.Nagpur 8. Bhandara 9. Gadchiroli
 10. Chandrapur 11. Yavatmal 12. Nanded 13. Parbhani 14. Jalna 15. Aurangabad 16.Latur
 17. Beed 18. Ahmadnagar 19 Nashik 20. Thane 21. Pune 22. Osmanabad 23. Solapur 24.Satara
 25. Sangli 26. Raigad 27. Kolhapur 28. Sindhudurg 29. Ratnagiri 30.Mumbai 31.Greater Mumbai.



Localities- ●

A. Pune (1-Dive Ghat), B. Satara (2-Khamataki ghat), C. Kolhapur (3- Nesari).

Geographical distribution:

Latitude (DMS): Between 18^o 31' -16^o N & Longitude (DMS): 73^o 50'-74^o.5' E;



Haritarium

Family Code: 348

Species code: 3 - 2F

Naoroji Godrej Centre for Plant Research

Cristisonia lawii Wight

References:

Cooke, T. (1904): **The Flora of Presidency of Bombay**. Vol.2: 385. (rep. Ed.1958).

Hooker, J.D. *et al.* (1883): **The flora of British India**. London. Vol.4: 322.

Singh N.P. & S. Karthikeyan (2000): (eds), **Flora of Maharashtra state, Dicotyledones Vol. II**. B.S.I., Calcutta: 558.

Santapau, H. (1967): *Rec.Bot.Surv.India* 16(1):187