



**Haritarium**

Family Code: 406

Species code: 1- 3A

**Naoroji Godrej Centre for Plant Research**

**Climatis heynei M.A.Rau**

**Botanical name:** *Climatis heynei* M.A. Rau  
(=*C.triloba* Heyne)

**Vernacular name:** Mogra-bel, Morvel, Ranjai.

**Family:** Ranunculaceae

**Threatened category:** Low risk (Gaikwad and Yadav, 2004)

**Key characters:** Flowers scented, white, 2-5 cm in diameter, filaments glabrous.

**Description:** Extensive climbers; stems and branches sulcate, 12-ribbed, somewhat hairy. Leaves simple or pinnately 3-foliate; leaflets ovate or orbicular, cuneate, rounded or cordate at base, acute at apex, entire or 3-lobed, 3-8 cm long, puberulous on both surfaces. 3-nerved at base; petioles slender, twinning, 2-8 cm long; petiolules 6-18 mm long. Inflorescences axillary, 1-7 flowered; bracts foliaceous. Flowers 2-4 cm across, greenish white or creamy-white, fragrant. Sepals 4-8, stellately spreading, oblong, obovate, cuspidate, pubescent outside, glabrous inside. Filaments ligulate at base, glabrous; connectives scarcely prolonged. Achenes in heads, ovoid, compressed, villous, with about 4.5 cm long feathery tails.

**Flowering and fruiting:** September- April.

**Distribution:** Endemic to India – Madhya pradesh, Maharashtra, Karnataka.

**Reported Localities:** Through out Maharashtra.

**Ecology:** **Very common** Occasionally found growing along the hedges of Degraded deciduous forests, climbing on shrubs and small trees. Altitude ranges between 300-1200m.

**Association:** No specific plant association is observed.



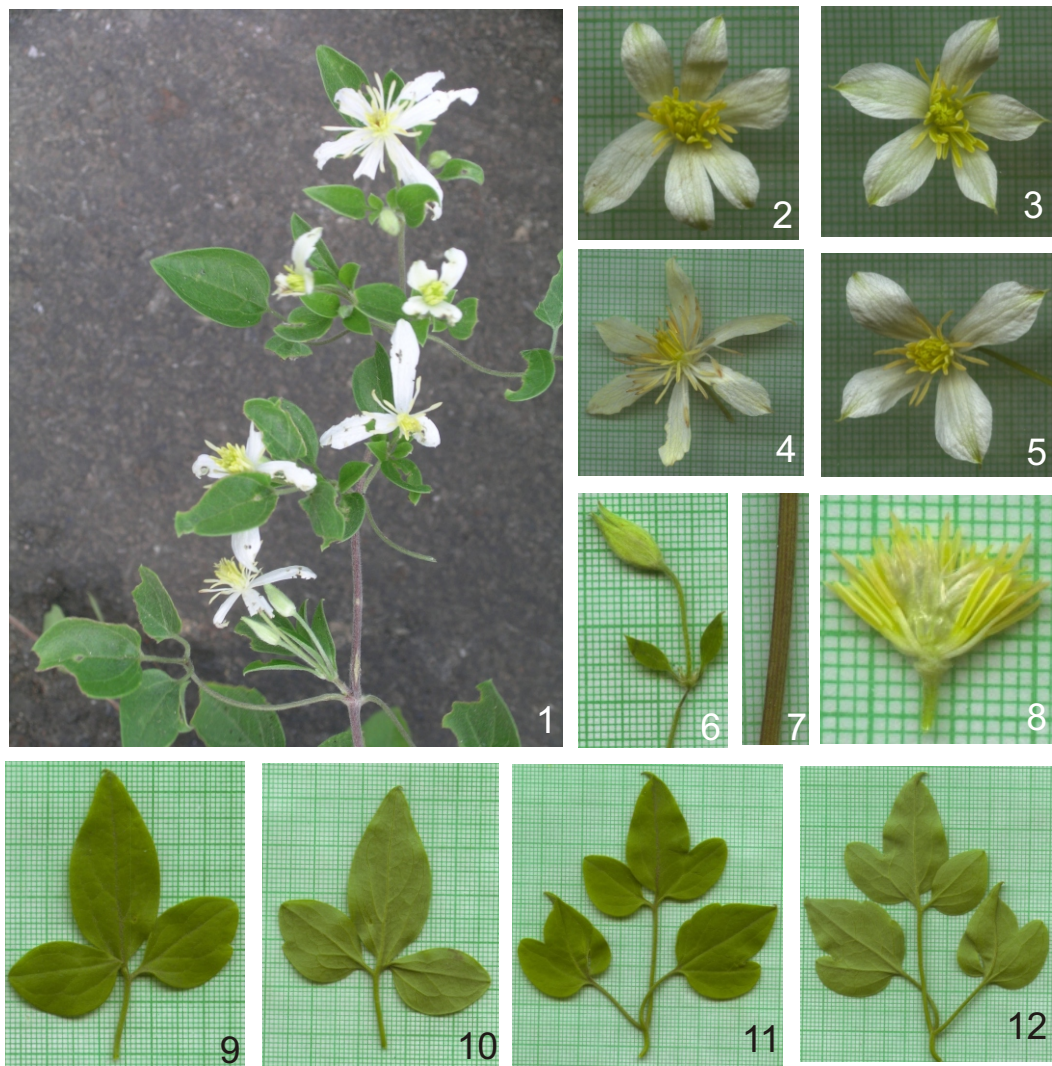
**Haritarium**

Family Code: 406

Species code: 1- 3B

**Naoroji Godrej Centre for Plant Research**

***Climatis heynei* M.A.Rau**



1.Habit, 2,3,4,5.Flower variation,6.Flower bud,7.Stem 8.Dissected flower  
9,10,11,12. Leafvariation Dorsal & ventral.



**Haritarium**

Family Code: 406

Species code: 1- 3C

**Naoroji Godrej Centre for Plant Research**

***Climatis heynei* M.A.Rau**







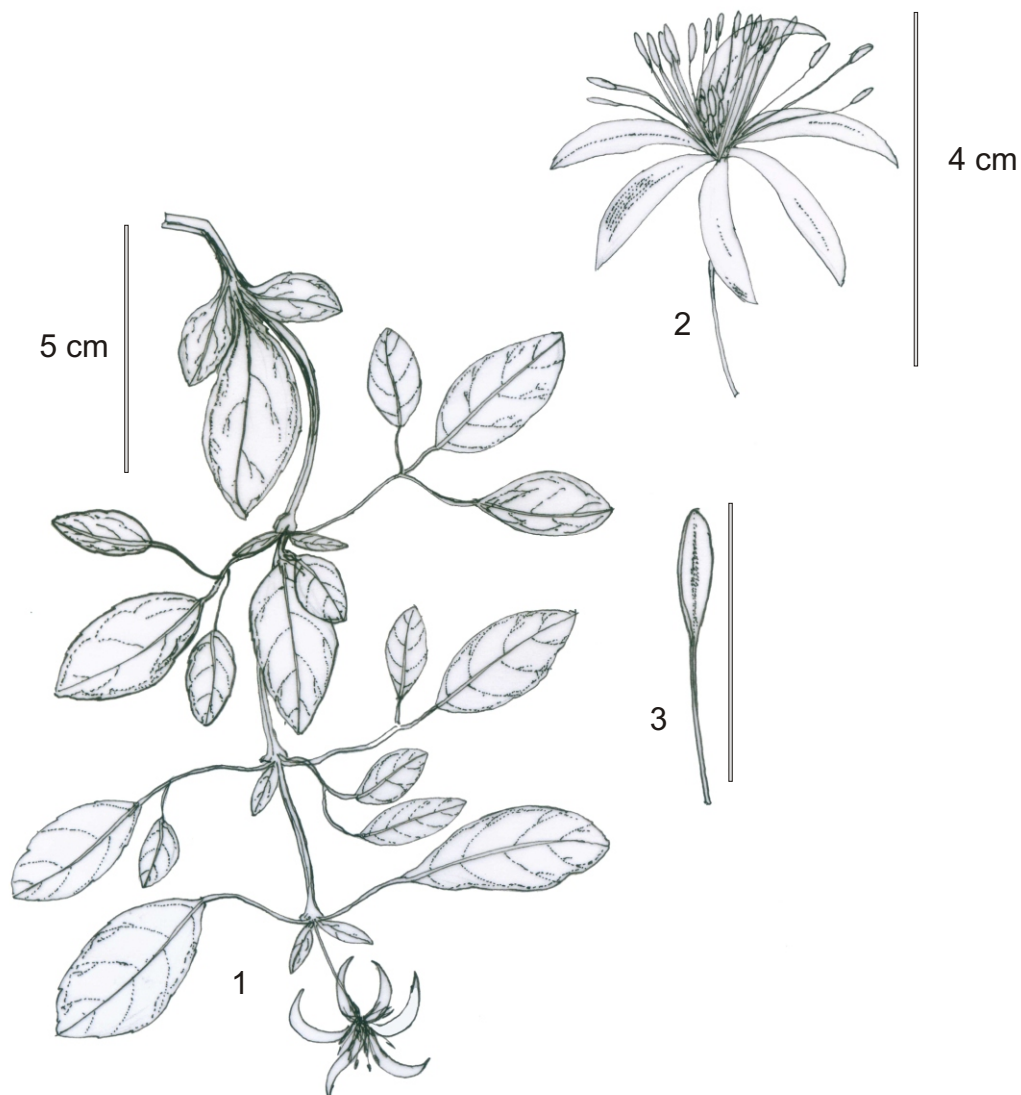
**Haritarium**

Family Code: 406

Species code: 1- 3D

**Naoroji Godrej Centre for Plant Research**

***Climatis heynei* M.A.Rau**



1.Habit, 2. Flower, 3. Bud



# Haritarium

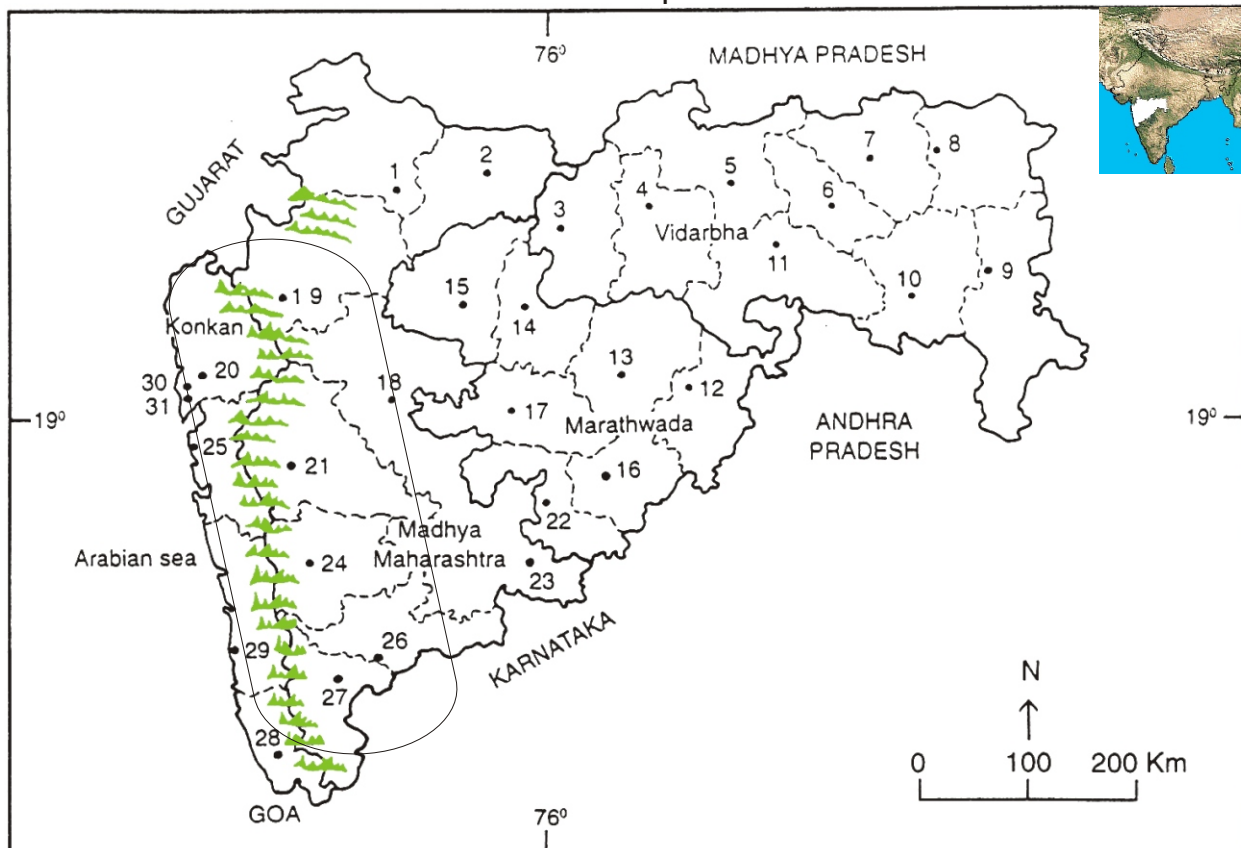
Family Code: 406

Species code: 1- 3E

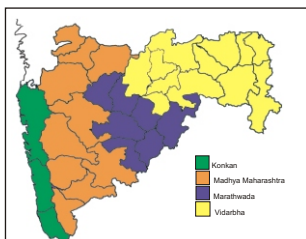
## Naoroji Godrej Centre for Plant Research

### *Climatis heynei* M.A.Rau

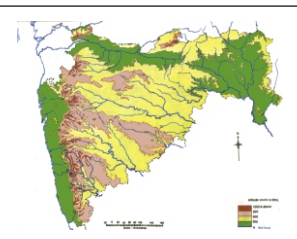
Location map



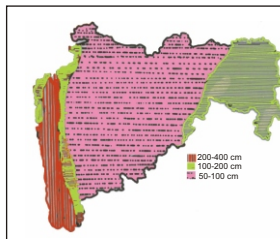
1.Dhule 2.Jalgaon 3. Buldhana 4.Akola 5.Amaravati 6.Wardha 7.Nagpur 8. Bhandara 9. Gadchiroli  
10. Chandrapur 11. Yavatmal 12. Nanded 13. Parbhani 14. Jalna 15. Aurangabad 16.Latur  
17. Beed 18. Ahmadnagar 19 Nashik 20. Thane 21. Pune 22. Osmanabad 23. Solapur 24.Satara  
25. Raigad 26.Sangli 27. Kolhapur 28. Sindhudurg 29. Ratnagiri 30.Mumbai 31.Greater Mumbai.



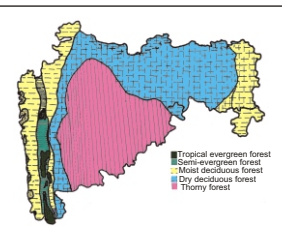
Geographical regions 1



Physical map 2



Rain fall map 3



Forest types 4

Distribution : Common in deciduous forests

Geographical distribution in Maharashtra:

Latitude (DMS): Between 18<sup>0</sup> 49' -16<sup>0</sup> 58'N & Longitude (DMS): 73<sup>0</sup> 17'-74<sup>0</sup> 43' E.



**Haritarium**

Family Code: 406

Species code: 1- 3F

**Naoroji Godrej Centre for Plant Research**

**Climatis heynei M.A.Rau**

**References:**

Cooke. T (1904): **Flora of Presidency of Bombay**. Vol.1: 2(rep. Ed.1967)

Hooker, J.D. *et al.* (1893): **The flora of British India**. London. Vol.1: 4.

Rau M.A. (1993): in B.D. Sharma *et al* (eds), **Flora of India**, B.S.I., Calcutta:67.