



Haritarium

Family Code: 406

Species code: 1 - 1A

Naoroji Godrej Centre for Plant Research

***Climatis wightiana* Wallich**

Botanical name: *Clematis wightiana* Wallich

Vernacular name: -

Family : Ranunculaceae

Threatened category: Low risk.

Key characters: Woody climbers, Branches up to 12 ribbed, Leaves pinnately 5-7 foliolate, Filaments hairy, Flowers creamy white or golden yellow.

Description: Large woody climbers; branches up to 12-ribbed, covered by brownish hairs. Leaves pinnately 3 - 5-foliate; leaflets oblong-ovate or elongate or orbicular, sometimes 3 - 5-lobed, irregularly dentate along margins, up to 8 cm long, softly brown silky villous on both sides; nerves thick, prominent beneath; petioles up to 12 cm long, more or less silky hairy. Inflorescence axillary, paniculate; bracts and bracteoles ovate to linear. Flowers 3 - 6 cm across, white or pale creamy or golden yellow. Sepals 4, ovate, spreading from base, somewhat ribbed, softly tomentose outside, glabrous inside. Filaments silky hairy along the middle; connective not prolonged beyond anther-thecae. Achenes ovate, compressed, densely silky hairy, with 3 - 5 cm long feathery tails.

Flowering and fruiting: December - May

Distribution: India – Maharashtra, Karnataka, Tamil Nadu and Kerala.

Reported Localities: Ahmednagar, Nasik, Pune, Satara, Thane.

Ecology: Occurs in subtropical evergreen forests of Western Ghats,

Association: -



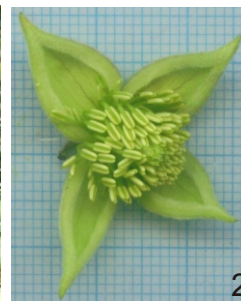
Haritarium

Family Code: 406

Species code: 1 - 1B

Naoroji Godrej Centre for Plant Research

***Climatis wightiana* Wallich**



1.Habit, 2.Flower, 3. Flower bud, 4. Inflorescence, 5.Sepal- dorsal view, 6. Sepal - ventral view, 7.Stem, 8. Anther, 9. Leaf- dorsal view, 10. Leaf - ventral view.



Haritarium

Family Code: 406

Species code: 1 - 1C

Naoroji Godrej Centre for Plant Research

***Climatis wightiana* Wallich**





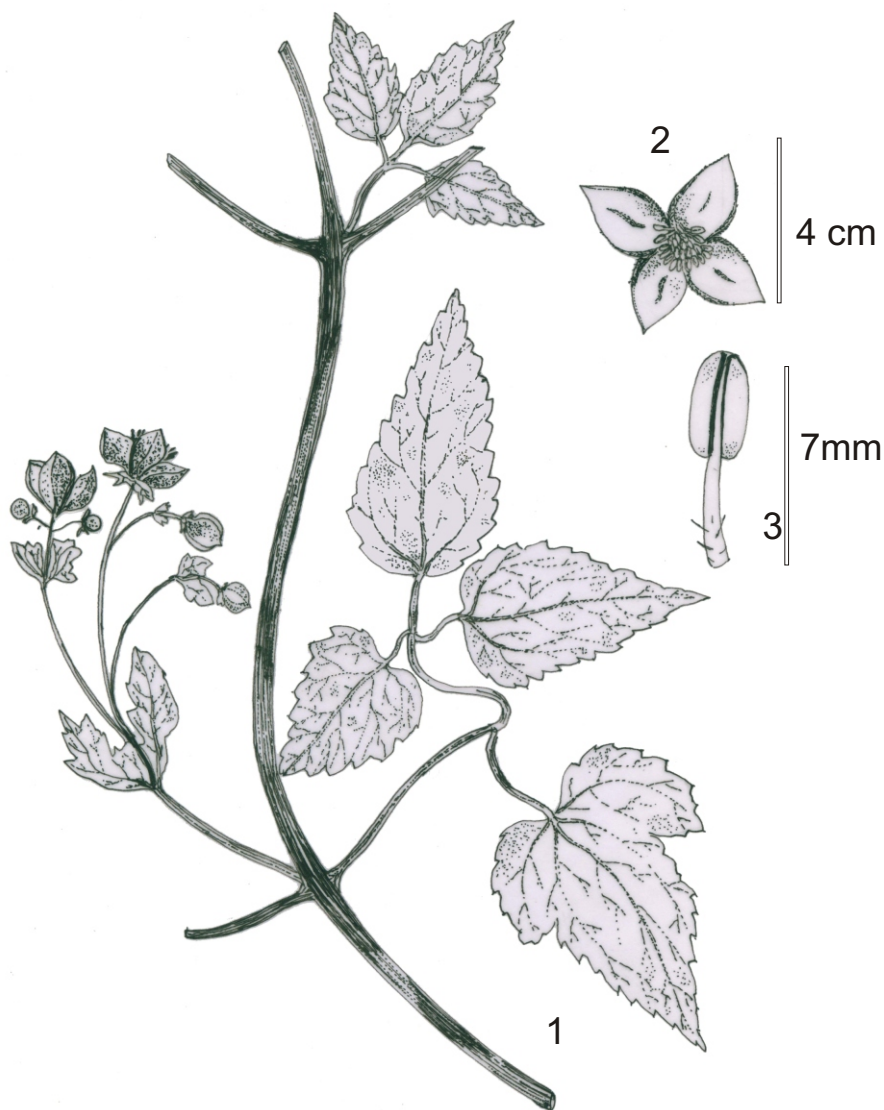
Haritarium

Family Code: 406

Species code: 1 - 1D

Naoroji Godrej Centre for Plant Research

***Climatis wightiana* Wallich**



1Habit, 2.Flower,3. Anther.



Haritarium

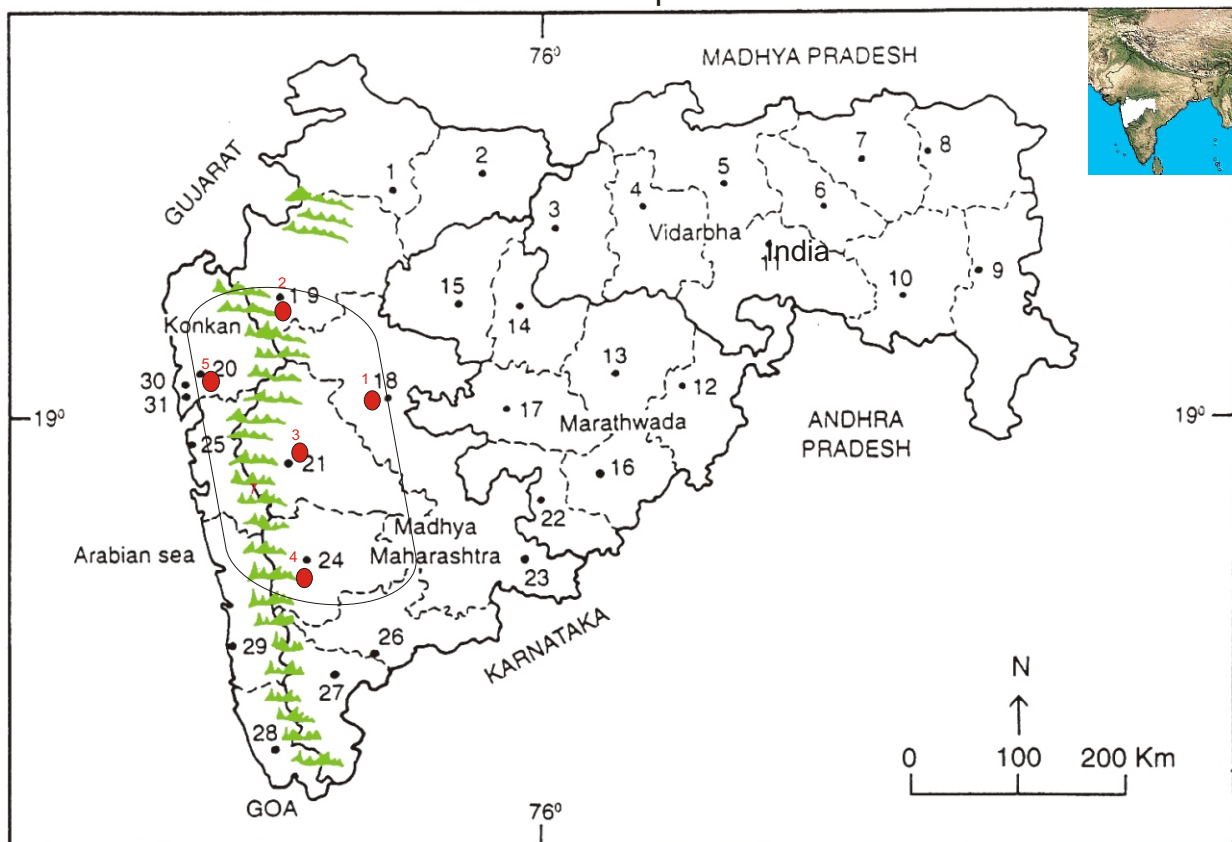
Family Code: 406

Species code: 1 - 1E

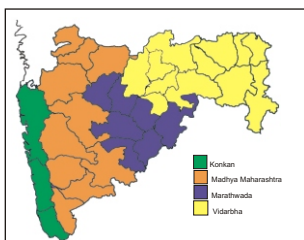
Naoroji Godrej Centre for Plant Research

Climatis wightiana Wallich

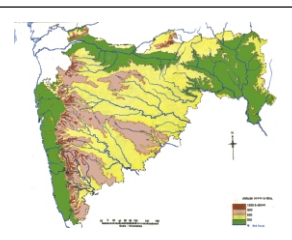
Location map



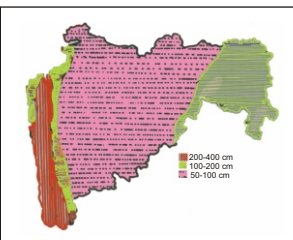
1.Dhule 2.Jalgaon 3. Buldhana 4.Akola 5.Amaravati 6.Wardha 7.Nagpur 8. Bhandara 9. Gadchiroli
10. Chandrapur 11. Yavatmal 12. Nanded 13. Parbhani 14. Jalna 15. Aurangabad 16.Latur
17. Beed 18. Ahmadnagar 19 Nashik 20. Thane 21. Pune 22. Osmanabad 23. Solapur 24.Satara
25. Raigad 26. Sangli 27. Kolhapur 28. Sindhudurg 29. Ratnagiri 30.Mumbai 31.Greater Mumbai.



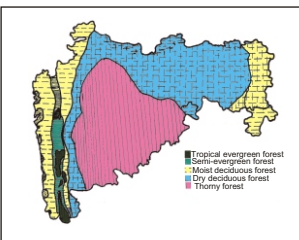
Geographical regions 1



Physical map 2



Rain fall map 3



Forest types 4

Localities- ●

1. Ahmednagar, 2. Nasik, 3. Pune, 4.Satara, 5.Thane.

Geographical distribution in Maharashtra:

Latitude (DMS): Between 19° 58' -16° 95' N & Longitude (DMS): 73° 17'-74° 43' E.



Haritarium

Family Code: 406

Species code: 1 - 1F

Naoroji Godrej Centre for Plant Research

Climatis wightiana Wallich

References:

Cooke. T (1904): **Flora of Presidency of Bombay**. Vol.1: 3.(rep. Ed.1967)

Hooker, J.D. *et al.* (1872): **The flora of British India**. London. Vol.1: 5.

Sharma B.D., N.P. Balakrishnan, R.R. Rao & P.K. Hajra (1993): (eds) **Flora of India**. Vol.1: B.S.I., Calcutta :81.

Singh N.P. & S. Karthikeyan (2000): (eds), **Flora of Maharashtra state, Dicotyledones**. Vol. 1: . B.S.I., Calcutta:153.

Tetali, P. *et al.* (2000): **Endemic Plants of India (A Status Report of Maharashtra State)**. Naoroji Godrej Centre for Plant Research, Shirwal: 13.