



Haritarium

Family Code: 273

Species code: 10 -16A

Naoroji Godrej Centre for Plant Research

Crotalaria lutescens Dalzell

Botanical name: *Crotalaria lutescens* Dalzell

Vernacular name: -

Family : Fabaceae (Papilionaceae)

Threatened category: Rare (Tetali *et al.* 2000), Low risk (Gaikwad & Yadav, 2004).

Key characters: Plant erect, stipules absent, terminal many flowered racemes, pods glabrous, exserted longer than calyx, seeds numerous.

Description: Undershrubs, 50-100 cm high. Leaves sessile, 3.5 – 6.5 X 0.8-1.8 cm, elliptic-lanceolate, membranous, apiculate. Flowers yellow, in lax racemes. Pods oblong.

Flowering and fruiting: August - December.

Distribution: India – Endemic to India.

Reported Localities in districts: Ahmednagar, Kolhapur, Nagpur, Ratnagiri, Sindhudurg.

Ecology: It is frequently observed in plains.

Association: No specific association is observed.



Haritarium

Family Code: 273

Species code: 10 -16B

Naoroji Godrej Centre for Plant Research

***Crotalaria lutescens* Dalzell**



1.Habitat, 2. Habit,3.Flower, 4.Inflorescence, 5.Pod, 6. Leaf - dorsal view, 7. Leaf- ventral view.



Haritarium

Family Code: 273

Species code: 10 -16C

Naoroji Godrej Centre for Plant Research

***Crotalaria lutescens* Dalzell**





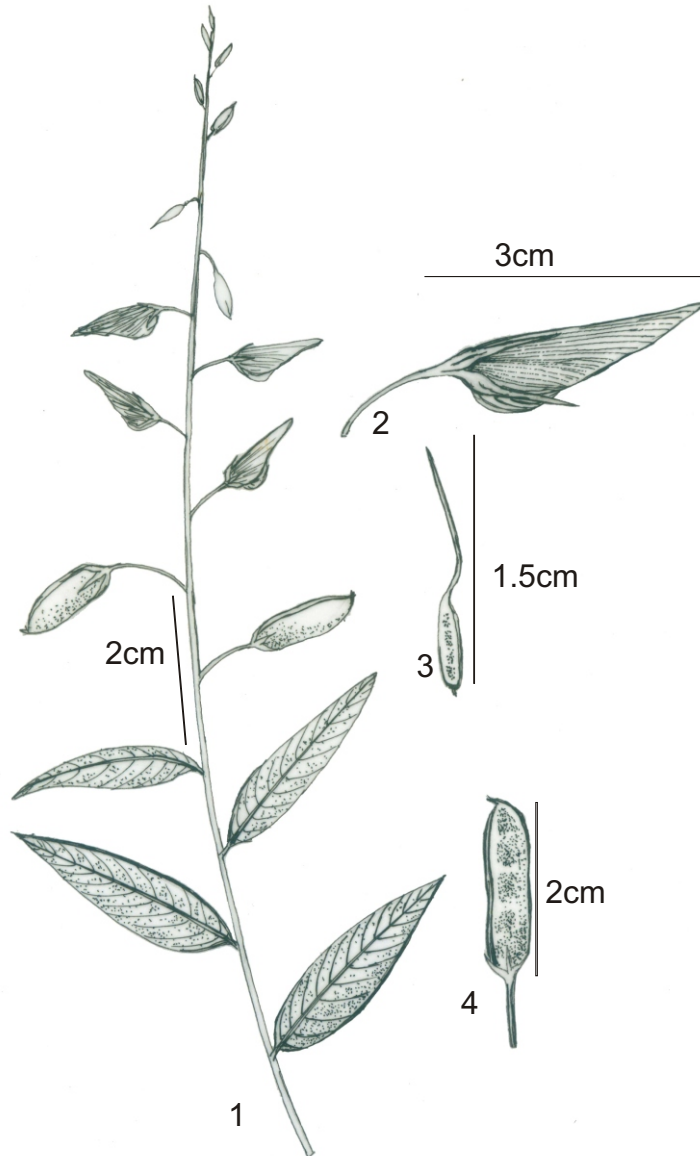
Haritarium

Family Code: 273

Species code: 10 -16D

Naoroji Godrej Centre for Plant Research

***Crotalaria lutescens* Dalzell**



1. Habit, 2. Flower, 3. Gynoecium, 4. Pod.



Haritarium

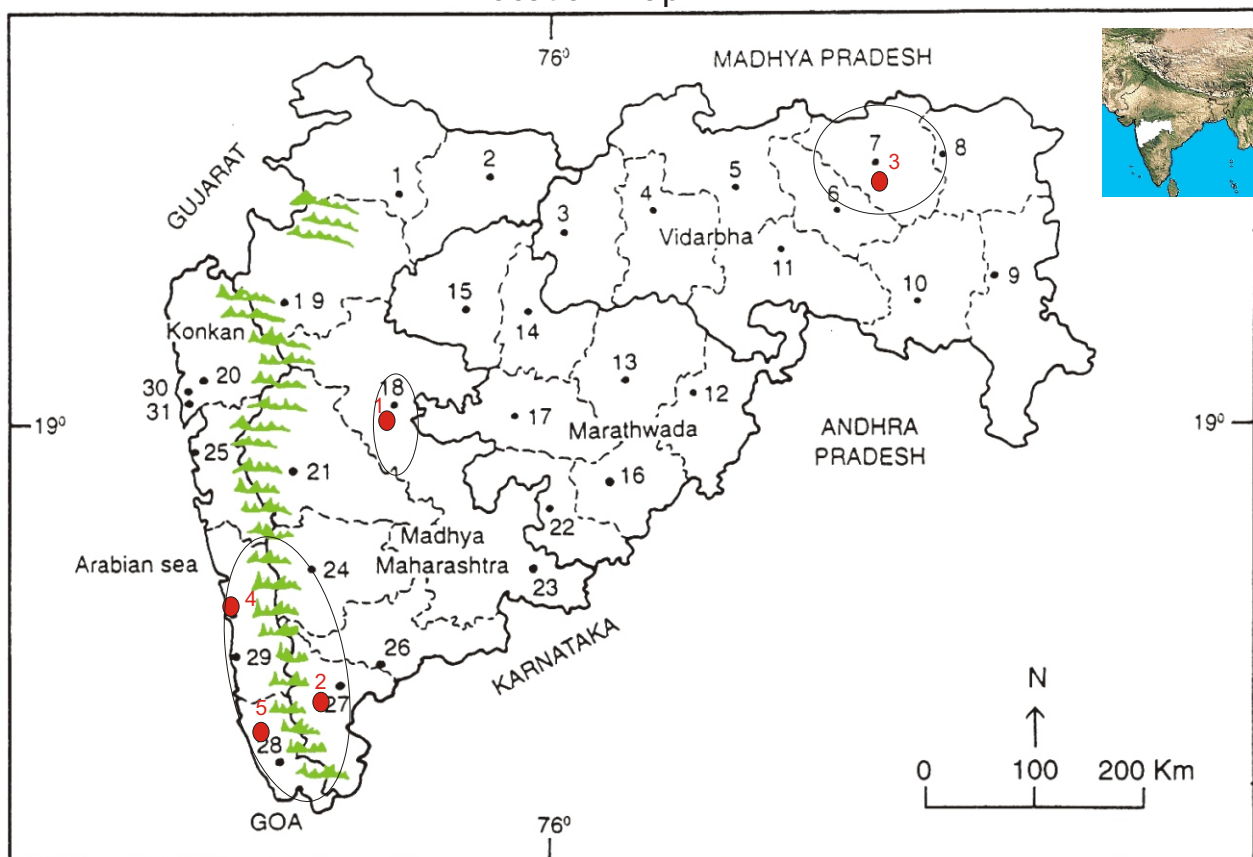
Family Code: 273

Species code: 10 -16E

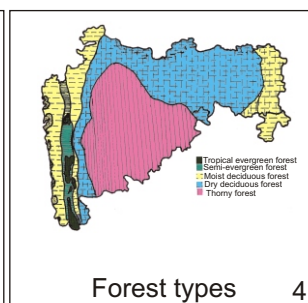
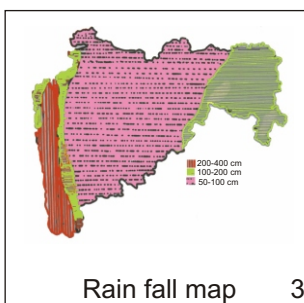
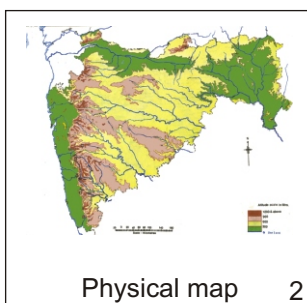
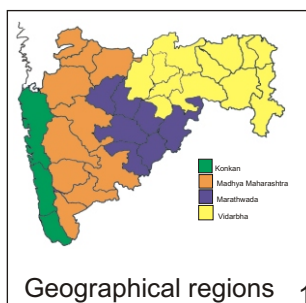
Naoroji Godrej Centre for Plant Research

Crotalaria lutescens Dalzell

Location map



1.Dhule 2.Jalgaon 3. Buldhana 4.Akola 5.Amaravati 6.Wardha 7.Nagpur 8. Bhandara 9. Gadchiroli
10. Chandrapur 11. Yavatmal 12. Nanded 13. Parbhani 14. Jalna 15. Aurangabad 16.Latur
17. Beed 18. Ahmadnagar 19 Nashik 20. Thane 21. Pune 22. Osmanabad 23. Solapur 24.Satara
25. Raigad, 26. Sangli 27. Kolhapur 28. Sindhudurg 29. Ratnagiri 30.Mumbai 31.Greater Mumbai.



Distribution in following districts ●

1. Ahmednagar 2. Kolhapur, 3.Nagpur, 4. Ratnagiri, 5. Sindhudurg.

Geographical distribution in Maharashtra:

Latitude (DMS): 21° 8' -17° 49' N & Longitude (DMS): 72° 58' -79° 5' E.



Haritarium

Family Code: 273

Species code: 10 -16F

Naoroji Godrej Centre for Plant Research

Crotalaria lutescens Dalzell

References:

Cooke. T (1904): **Flora of Presidency of Bombay**. Vol.1: 3180. (rep. Ed.1958)

Gaikwad S.P. & S.R. Yadav (2004): in T. Pullaiah (ed.) Endemic flowering plant species of Maharashtra and their possible utilization; **Biodiversity in India**, Regancy publications, New Delhi:38.

Hooker, J.D. *et al.* (1876): **The flora of British India**. London. Vol.2: 74.

Sanjappa M. (1991): **Legumes of India**. Bishen Singh Mahendra Pal Singh, Dehra Dun.:123.

Singh N.P. & S. Karthikeyan (2000): (eds), **Flora of Maharashtra state, Dicotyledones**. Vol. I: . B.S.I., Calcutta: 634.

Tetali, *et al.* (2000): **Endemic Plants of India (A Status Report of Maharashtra State)**. Naoroji Godrej Centre for Plant Research, Shirwal: 22.