



Haritarium

Family Code: 570

Species code: 11 -5A

Naoroji Godrej Centre for Plant Research

Dipacadi maharashtrense Deb & Dasgupta

Botanical name: *Dipacadi maharashtrensis* Deb et Dasgupta

Vernacular name: Deep kadi

Family : Hyacinthaceae

Threatened category: Endangered (Nayar & Sastry, 1987), Data deficient (Gaikwad & Yadav, 2004)

Key characters: Perennial stems is a tunicated bulb, Leaves radical annual scape is simple, Pedicels stout, flowers in racemose, filaments adnate in most of part to Perianth tube, Bracts coriaceous, acute. Flattened seeds.

Description: Perennial herbs, up to 40 cm high, bulbous, scapigerous. Bulbs 1.2-2.5 x 1.2-2.5 cm, globose, rooting profusely from base. Leaves radical, few (2-6), shorter than scape, 13.5-35 x 0.2-0.8 cm, linear, broadest at middle, plicate, acute at apex, entire along margins, coriaceous, glabrous, 6-14-veined, central veins closely arranged. Scapes 15-38 cm long, terete, glabrous. Racemes 3.5-13 cm long, loose, bearing 3-15 flowers; pedicel occasionally bear more than one flower; bracts persistent, longer than pedicels, 1-2 x 0.2 - 0.4 cm, subulate-lanceolate, long acuminate, coriaceous, 3-5 - nerved, appressed pilose, clasping the pedicels. Pedicels 2-5 mm long, stout. Flowers white to off-white, young with greenish tinge, turns brownish with maturity, scented, perianth tips hooded, 11-17 mm long. Whorl of perianth 1.0 - 1.3 x 0.2 - 0.4 cm, campanulate, connate up to one third from base; lobes 1.5 - 1.7 x 0.2 - 0.3 cm, obovate-lanceolate, obtuse at apex, nerves convergent. Stamens and filaments adherent to inner perianth tube, remaining free for about 1 mm above; anthers off-white tinged with green, turns brownish during and after dehiscence, oblong, 2.5 - 3 x 0.6 - 1 mm, dorsifixed, introrse, 2-celled; filaments flat, up to 5 mm long; pollen white, spherical. Gynoecium 1.0 - 1.3 cm long, green; ovary tricarpellate, stipitate, broadly oblong, 3.5-5 x 2.0-3 mm, trilocular, with numerous ovules on axile placenta; style stout, white, 0.4 - 0.6 cm long. Capsules obovoid, trilocular, trilobed, 8-11 x 13-15 mm, with persistent style, stalk 1.0 - 1.2 cm long. Seeds compressed, 5-9 in each locule, superposed, 4-5 mm across, obovoid, orbicular, oblong, black, glossy.

Flowering and fruiting: August – December.

Distribution: India: Endemic to Maharashtra

Reported Localities: Satara (Panchgani , Kas plateau)

Ecology: It grows mostly on open lateritic plateaus full of crevices or puddles with little soil depth.

Association: Grass species such as *Drimis* spp., *Dichanthium* spp., *Eragrostis* spp., *Glyphochloa* spp., *Isachne* spp., and other herbs mostly ephemerals such as *Utricularia* spp., *Eriocaulan* spp., *Aponogeton satarensis*, *Impatiens* spp., *Linum mysurense* and *smithia* spp.



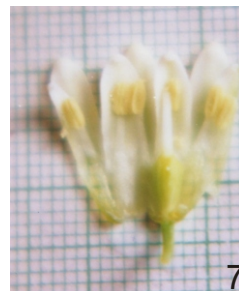
Haritarium

Family Code: 570

Species code: 11 -5B

Naoroji Godrej Centre for Plant Research

Dipacadi maharashtrense Deb & Dasgupta



1.&2. Habitat, 2. Habit, 3& 4.. Inflorescence, 5. Flowers, 7. Dissected flower, 8. Pods.



Haritarium

Family Code: 570

Species code: 11 -5C

Naoroji Godrej Centre for Plant Research

Dipacadi maharashtrense Deb & Dasgupta





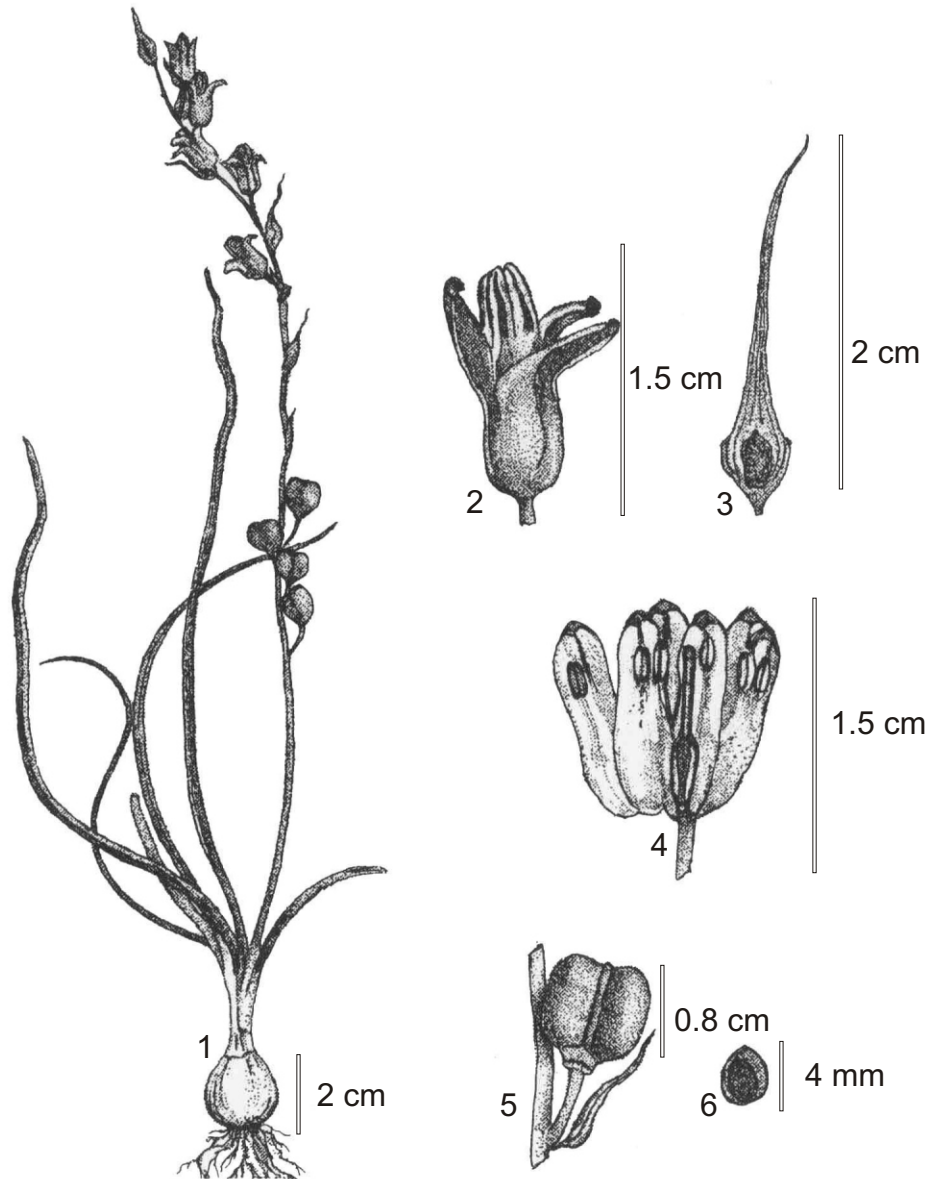
Haritarium

Family Code: 570

Species code: 11 -5A

Naoroji Godrej Centre for Plant Research

Dipacadi maharashtrense Deb & Dasgupta



1.Habit, 2. Flower, 3.Bract, 4.Dissected flower,5.Fruit, 6. Seed.



Haritarium

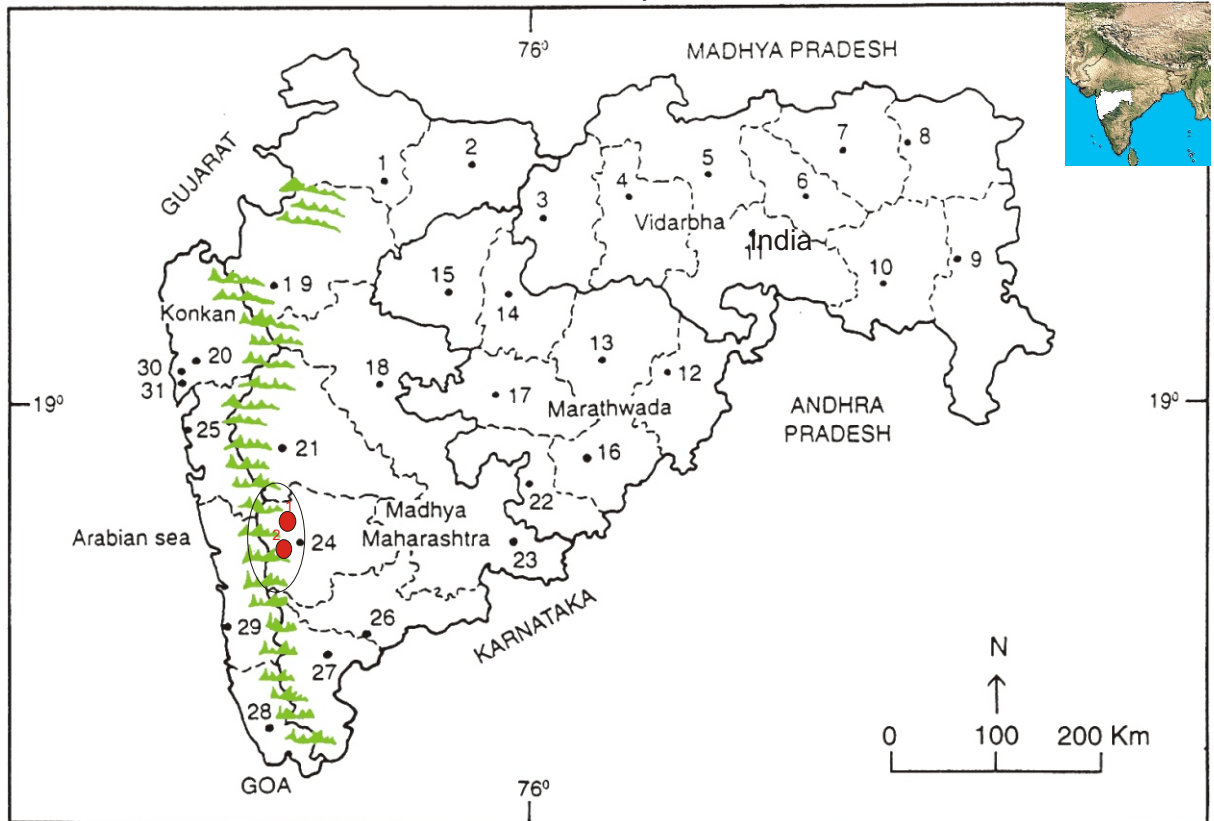
Family Code: 570

Species code: 11-5E

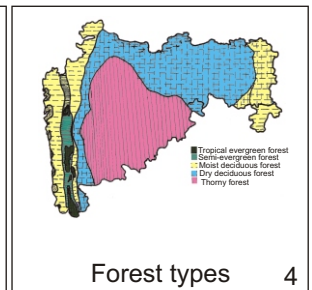
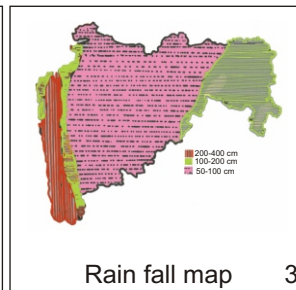
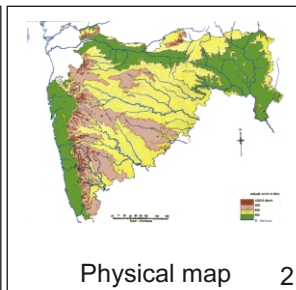
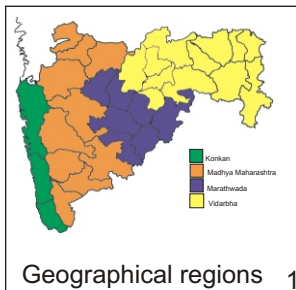
Naoroji Godrej Centre for Plant Research

Dipacadi maharashtrense Deb & Dasgupta

Location map



1.Dhule 2.Jalgaon 3. Buldhana 4.Akola 5.Amaravati 6.Wardha 7.Nagpur 8. Bhandara 9. Gadchiroli
10. Chandrapur 11. Yavatmal 12. Nanded 13. Parbhani 14. Jalna 15. Aurangabad 16.Latur
17. Beed 18. Ahmadnagar 19 Nashik 20. Thane 21. Pune 22. Osmanabad 23. Solapur 24.Satara
25. Raigad, 26. Sangli 27. Kolhapur 28. Sindhudurg 29. Ratnagiri 30.Mumbai 31.Greater Mumbai.



Localities- ●

A.Satara (1-Panchgani,2-Kas plateau).

Geographical distribution

Latitude(DMS):Between 17° 7'-17° 55' N &Longitude(DMS):73° 49'-73° 83' E



Haritarium

Family Code: 570

Species code: 11 -5F

Naoroji Godrej Centre for Plant Research

Dipacadi maharashtrense Deb & Dasgupta

Reference:

- Ahmedullah, M & M.P. Nayar (1987): **Endemic Plants of the Indian Region** B.S.I. Calcutta, vol.1:240.
- Cooke, T. (1904): **The Flora of Presidency of Bombay**. Vol.3: 277. (rep. Ed.1958).
- Deb, D.B. & S. Dasgupta(1978): Revision of the genus *Dipacadi* Medik.(Liliaceae) in India and adjoining regions. *J. Bombay nat. Hist. Soc.* 75: 50-70.
- Dixit G.B.,S.R.Yadav & K.S. Patil(1992): Cytological Studies in *Dipacadi concanense*(Dalz) Baker. *J. Cytol.Genet.* 27:91-94
- Gaikwad S.P. & S.R. Yadav(2004): in T. Pullaiah (ed.)Endemic flowering plant species of Maharashtra and their possible utilization; **Biodiversity in India**, Regancy publications, New Delhi:50.
- Hooker, J.D. *et al.*(1883):**The flora of British India**. London. Vol.6: 34.
- Kulkarni, B. G. (1988): **Flora of Sindhudurg**, B.S.I. Calcutta: 452.
- Laxminarasimhan, P.(1996): in B.D. Sharma, S. Karthikeyan & N.P.Singh (eds), **Flora of Maharashtra state**, Monocot. B.S.I., Calcutta:130-131.
- Mistry, M.K. (1986): **Flora of Ratnagiri district, 2** .Ph.D. Thesis (*ined.*): 681.
- Mistry,M.K. & S.M. Almeida (1989): Some rare, endangered and threatened plant species from Ratnagiri district, Maharashtra, in *J.Bombay nat. Hist. Soc.*, 86(3):478.
- Nayar, M.P.& A.R.K. Sastry (1987): **Red Data Book on Indian Plants.**, (eds), B.S.I. Calcutta Vol.1:17.
- Raghavan, R. S. and N.P. Singh (1983): in S.K. Jain & A.R.K. Sastry (eds.) *Plant. Cons. Bull.*, Vol. 3: 5.
- Raghavan, R.S.& Singh(1984): An inventory of endemic and vulnerable species of Western India deserving conservation, in *J.Econ.Tax. Bot.* 5(1): 153-164.
- Singh, N.P. & R.S.Raghavan (1986). Materials for plant conservation in Western India, *J. Econ. Tax. Bot.*, 8(1):31.
- Tetali, *et al.* (2000): **Endemic Plants of India (A Status Report of Maharashtra State)**. Naoroji Godrej Centre for Plant Research, Shirwal: 77.
- Yadav, S.R.(1997): Endemic plants of peninsular India with special reference to Maharashtra, in Pokle D.S., S.P. Kanir & V.N. Naik (eds.) **Proceedings, VII IAAT Annual Meet and National Conference**, Aurangabad:46.