



Haritarium

Family Code: 558

Species code: 10 - 3A

Naoroji Godrej Centre for Plant Research

***Drimia polyantha* (Blatt. & McCann) Stearn**

Botanical name: *Drimia polyantha* (Blatt. & McCann) Stearn
(=*Urginea polyantha* Blatt.&McC.)

Vernacular name: Pachankanda.

Family : Hyacinthaceae

Threatened category: Data deficient (Gaikwad & Yadav, 2004).

Key characters: Underground perennial stems large in proportion to roots, tunicated bulb; annual scape simple, naked, Leaves radical, Pedicel longer than bracts, bracts persistent, flowers racemose, Perianth campanulate, 6-partite, Seeds flattened.

Description: Herbs, scapigerous; bulbs globose-ovoid, tunicate, Leaves shining green, elliptic oblong, 30-40 X 1.5 -4.0 cm, lorate. Scapes 45 cm long. Inflorescence of racemes dense or lax, 20 cm long. Flowers up to 40, brownish-purple, open during day time between 6am -2pm., pedicellate. Capsules truncate, trilocular. Seeds broadly elliptic.

Flowering and fruiting: March- July.

Distribution: India: Endemic to Peninsular India

Reported Localities: Nasik, Kolhapur, Pune and Satara districts.

Ecology: Common. Prefers open slopes and plateaux. Altitude ranges between 300-1200m above sea level.

Association: No specific plant association is observed..



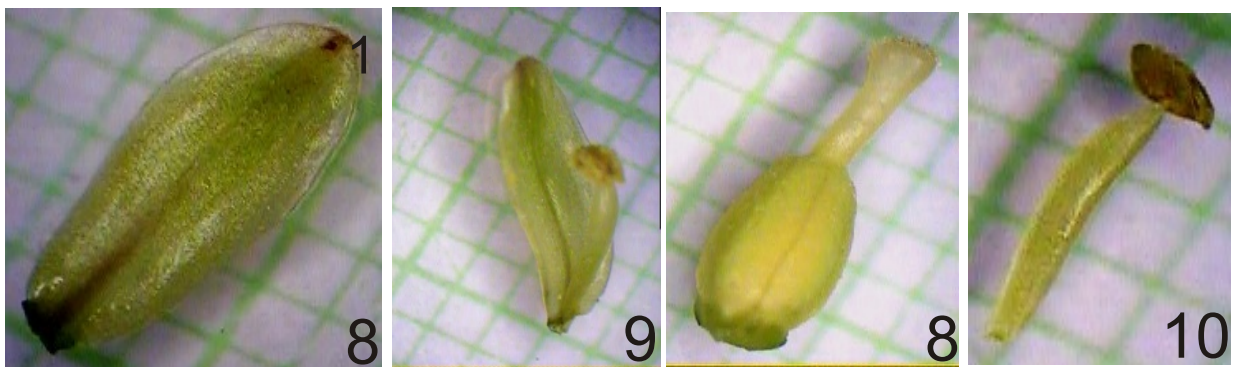
Haritarium

Family Code: 558

Species code: 10 - 3B

Naoroji Godrej Centre for Plant Research

Drimia polyantha (Blatt. & McCann) Stearn



1.Habit, 2.Inflorescence, 3.Fruiting scape, 4,5,6. Flower variation, 7. Dissected flower, 6.Perianth,7. Anther with perianth, 8. Gynoecium, 9.&10. Anther
11. Bulb, 12&13 Pod,14. Seeds.



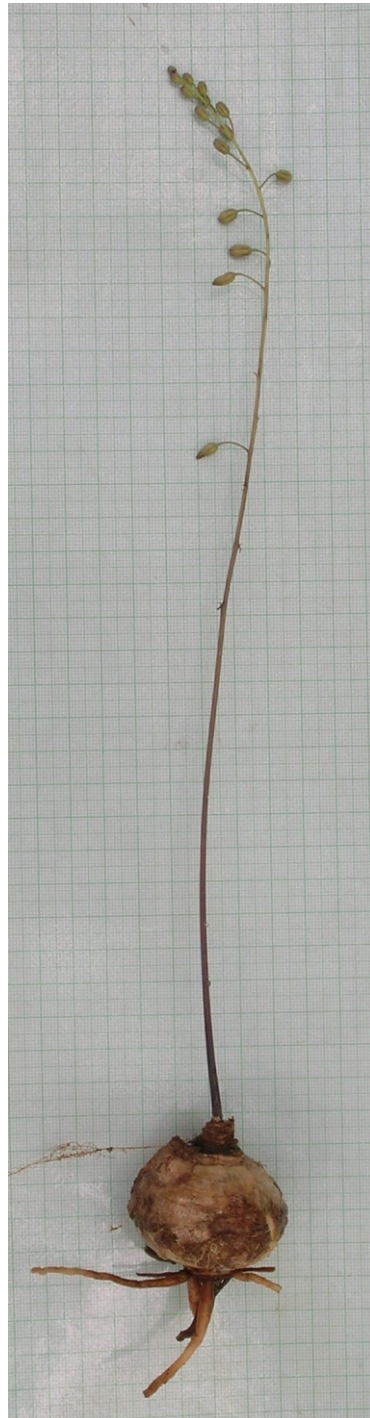
Haritarium

Family Code: 558

Species code: 10 - 3C

Naoroji Godrej Centre for Plant Research

Drimia polyantha (Blatt. & McCann) Stearn





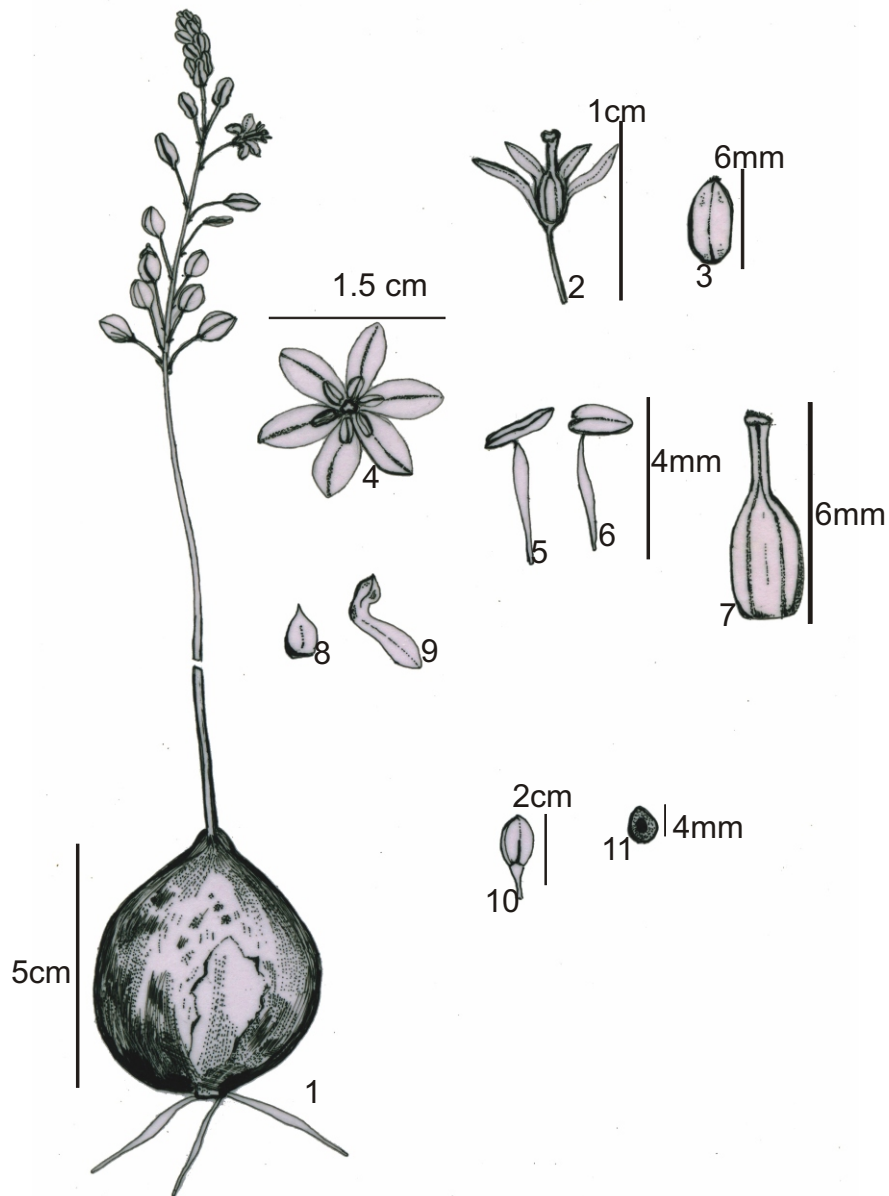
Haritarium

Family Code: 558

Species code: 10 - 3D

Naoroji Godrej Centre for Plant Research

Drimia polyantha (Blatt. & McCann) Stearn



1. Habit, 2. Dissected flower, 3. Perianth, 4. Flower, 5 & 6. Anthers, 7. Gynoecium, 8 & 9. Bract, 10. Capsule 11. Seed



Haritarium

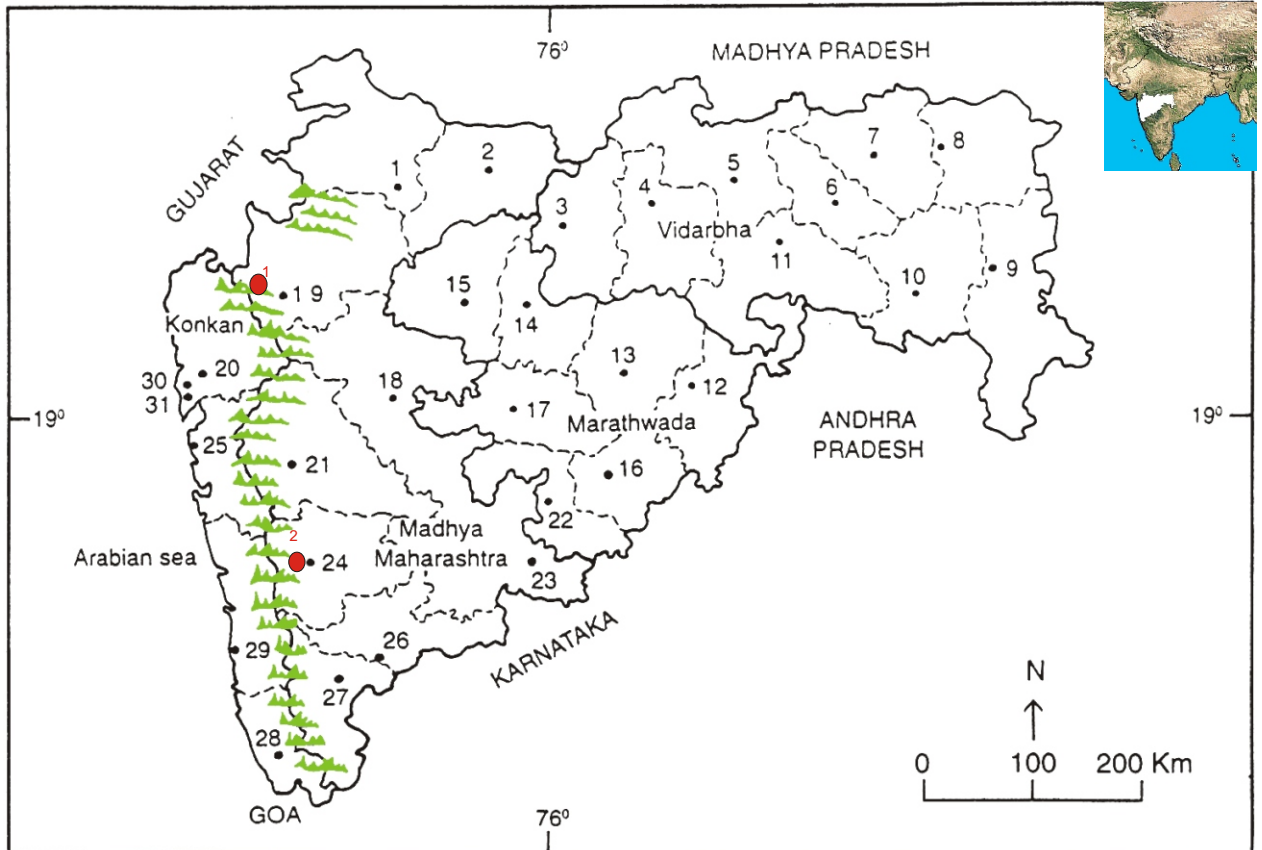
Family Code: 558

Species code: 10 - 3E

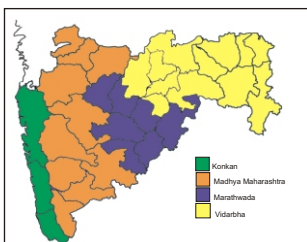
Naoroji Godrej Centre for Plant Research

***Drimia polyantha* (Blatt. & McCann) Stearn**

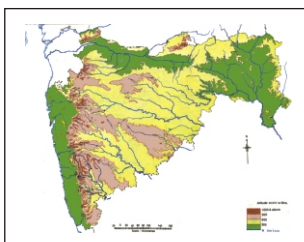
Location map



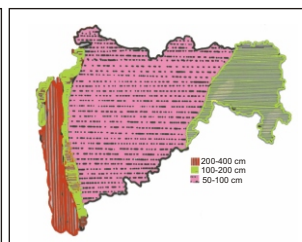
1. Dhule 2. Jalgaon 3. Buldhana 4. Akola 5. Amaravati 6. Wardha 7. Nagpur 8. Bhandara 9. Gadchiroli
 10. Chandrapur 11. Yavatmal 12. Nanded 13. Parbhani 14. Jalna 15. Aurangabad 16. Latur
 17. Beed 18. Ahmadnagar 19. Nashik 20. Thane 21. Pune 22. Osmanabad 23. Solapur 24. Satara
 25. Raigad 26. Sangli 27. Kolhapur 28. Sindhudurg 29. Ratnagiri 30. Mumbai 31. Greater Mumbai.



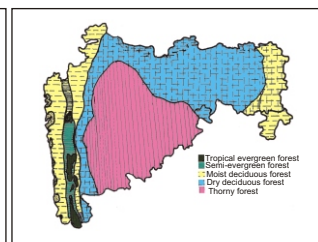
Geographical regions 1



Physical map 2



Rain fall map 3



Forest types 4

Localities- ●

A. Nasik (1-Nasik) , B. Satara (2-Kas)

Geographical distribution:

Latitude (DMS): Between 19° 58' - 17° 07' N & Longitude (DMS): 73° 47' - 73° 83' E;



Haritarium

Family Code: 558

Species code: 10 - 3F

Naoroji Godrej Centre for Plant Research

Drimia polyantha(Blatt. &McCann)Stearn

References:

Ansari, M.Y. & Raghavan (1980): *J. Bombay nat. Hist. Soc.* 78:572-574.

Deb D.B. & S. Dasgupta (1977): Generic status of *Urginea* Steinhil (Liliaceae) *Bull. Bot. Surv. India* 16:116-124.

Laxminarasimhan, P.(1996): in B.D. Sharma, S. Karthikeyan & N.P.Singh (eds), **Flora of Maharashtra state, Monocot.** B.S.I., Calcutta: 135.

Tetali, *et al.* (2000): **Endemic Plants of India (A Status Report of Maharashtra State)**. Naoroji Godrej Centre for Plant Research, Shirwal: 78.