



Haritarium

Family Code: 577

Species code: 2 - 1A

Naoroji Godrej Centre for Plant Research

Ensete superbum (Roxb.) Cheesm.

Botanical name: *Ensete superbum* (Roxb.) Cheesm.

(= *Musa superba* Roxb.)

Vernacular name: Chavan-kel, Kawder, Chowani, Rankel.

Family : Musaceae

Threatened category: Low risk (Gaikwad & Yadav, 2004)

Key characters: Plants not stoloniferous, bracts many flowered, 10-17 flowered.

Description: A large herb, trunk short, swollen at base, 3.0-3.6 m high. Leaves oblong, narrowed to base 1.5-3.0 X 0.5-1.0 m (In cultivated conditions leaves grow more than 5 feet long). Inflorescence of subterminal, stout spikes. Bracts orbicular, large, brownish red. Flowers in two rows in 10- 17 each, petals pale, 3-lobed. Stamens 5 perfect. Anthers linear, 2-celled, Pollen white, ovary 3-celled, Stigma subglobose. Fruits oblong, subcoriaceous, 7.5 X 3.7 cm, ripens dry. Seeds 25-45, 0.7-1.2 cm in diam., numerous, stony, subglobose, angled or smooth, brown or black.

Flowering and fruiting: July -January.

Distribution: India – Endemic to Peninsular India

Reported Localities: Common throughout the Western Ghats. Ahmednagar, Amaravati, Kolhapur, Mumbai, Nasik, Pune, Raigad, Satara, Thane.

Ecology: Commonly found in the crevices of rocks, steep hill slopes, near water falls and other wet places. Altitude range varies from sea level – 1200m or even above. The immature fruits are delicacy for tribals. Ripe fruits are eaten by monkeys. The leaves are thick and do not tear out easily like *Musa* sp. Hence can be used as plates.

Association: No specific plant association is observed.



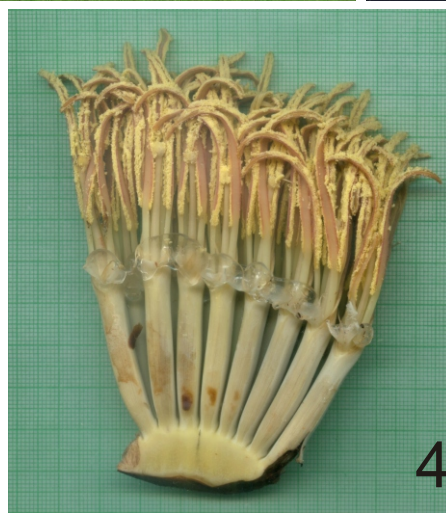
Haritarium

Family Code: 577

Species code: 2 - 1B

Naoroji Godrej Centre for Plant Research

***Ensete superbum* (Roxb.) Cheesm.**



1.Habit,2.Flowering & Fruiting, 3. Inflorescence with bract,4. Inflorescence, 5. Pollen grains 6. Seeds 7.Single flower, 8. Anther, 9. Gynoecium, 10. Bracts, 11.& 12.Fruit.



Haritarium

Family Code: 577

Species code: 2 - 1C

Naoroji Godrej Centre for Plant Research

Ensete superbum (Roxb.) Cheesm.





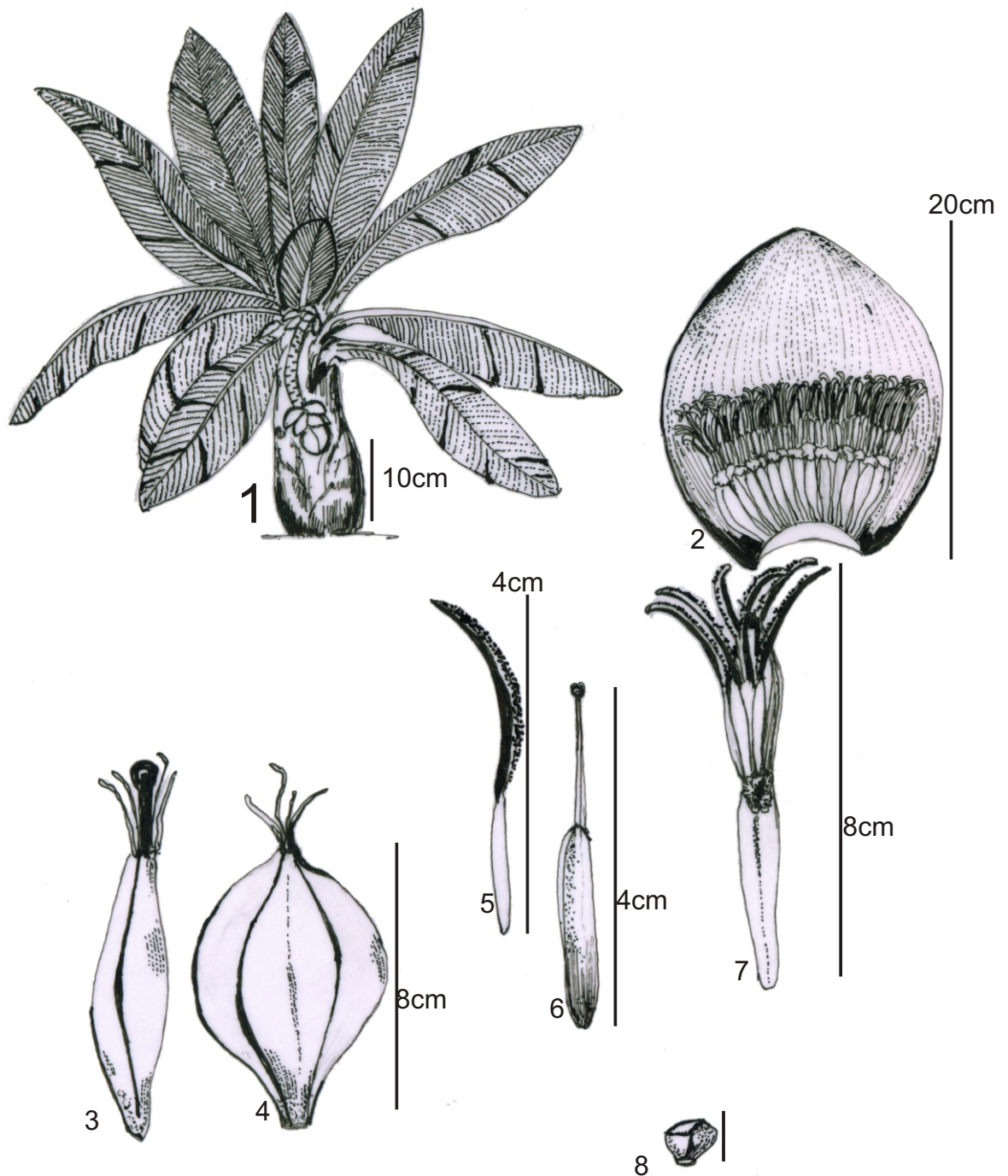
Haritarium

Family Code: 577

Species code: 2 - 1D

Naoroji Godrej Centre for Plant Research

Ensete superbum (Roxb.) Cheesm.



1.Habit, 2. Inflorescence, 3&4. Fruits, 5. Anther, 6. Gynoecium, 7.Single Flower, 8. Seed.



Haritarium

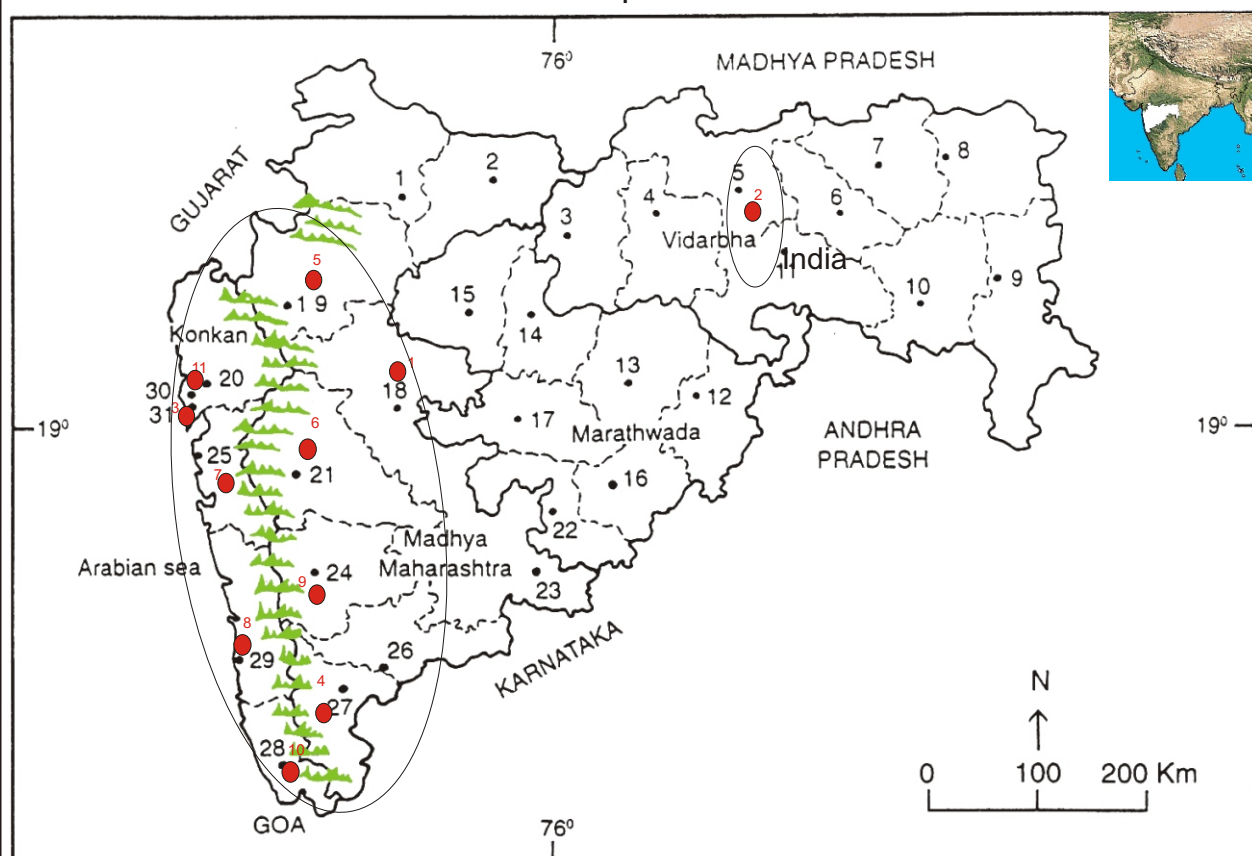
Family Code: 577

Species code: 2 - 1E

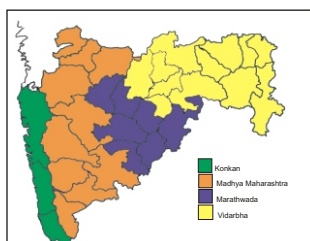
Naoroji Godrej Centre for Plant Research

Ensete superbum (Roxb.) Cheesm.

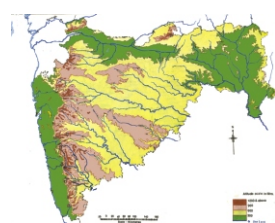
Location map



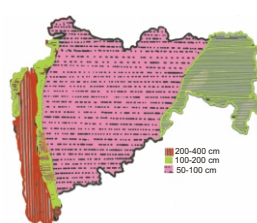
1.Dhule 2.Jalgaon 3. Buldhana 4.Akola 5.Amaravati 6.Wardha 7.Nagpur 8. Bhandara 9. Gadchiroli
10. Chandrapur 11. Yavatmal 12. Nanded 13. Parbhani 14. Jalna 15. Aurangabad 16.Latur
17. Beed 18. Ahmadnagar 19 Nashik 20. Thane 21. Pune 22. Osmanabad 23. Solapur 24.Satara
25. Raigad, 26.Sangli 27. Kolhapur 28. Sindhudurg 29. Ratnagiri 30.Mumbai 31.Greater Mumbai.



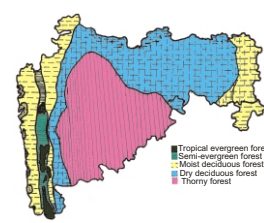
Geographical regions 1



Physical map 2



Rain fall map 3



Forest types 4

Localities- ●

1.Ahmadnagar, 2.Amaravati, 3.Bombay, 4. Kolhapur, 5.Nasik, 6.Pune, 7.Raigad, 8.Ratnagiri, 9.Satara, 10. Sindhudurg 11.Thane.

Geographical distribution:

Latitude (DMS): Between 22° 1' - 16° 4' N & Longitude (DMS): 72° 6' - 80° 9' E.



Haritarium

Family Code: 577

Species code: 2 - 1F

Naoroji Godrej Centre for Plant Research

Ensete superbum (Roxb.) Cheesm.

References:

Cheesman, E.E.(1948a): Classification of the bananas : 1.The genus *Ensete* Horan. *Kew Bull.* 1947:97-106.

Cooke, T. (1904): **The Flora of Presidency of Bombay**. Vol.3: 247. (rep. Ed.1958).

Gaikwad S.P. & S.R. Yadav(2004): T. Pullaiah (ed.)Endemic flowering plant species of Maharashtra and their possible utilization; **Biodiversity in India**, Regancy publications, New Delhi:50.

Hooker, J.D. *et al.*(1883):**The flora of British India**. London. Vol.6: 261.

Laxminarasimhan, P.(1996): in B.D. Sharma, S. Karthikeyan & N.P.Singh (eds), **Flora of Maharashtra state, Monocot**. B.S.I., Calcutta: 88.

Santapau, H. (1967) : **The Flora of Khandala on the Western Ghats of India**. *Rec. bot. Surv. India*,**16**(1):277.

Tetali, *et al.* (2000): **Endemic Plants of India (A Status Report of Maharashtra State)**. Naoroji Godrej Centre for Plant Research, Shirwal: 75.