



Haritarium

Family Code: 207

Species code: 5 -1-1A

Naoroji Godrej Centre for Plant Research

***Epithema carnosum* Benth. var. *hispida* C.B. Clarke.**

Botanical name: *Epithema carnosum* Benth. var. *hispida* C.B. Clarke

Vernacular name: -

Family : Gesneriaceae

Threatened category: -

Key characters: Leaf base sub equal, apex acuminate, Capsules oblong or oblong-ellipsoid and included with calyx.

Description: Succulent herbs, 5-20 cm tall, slender. Leaves - upper opposite, sub sessile, lower alternate, petiolate, 3-15 cm long, elliptic or ovate, apex obtuse, margins serrate. Inflorescence is a scorpioid cyme. Flowers solitary or 2-5-together, axillary or terminal; bracts leafy, cucullate, dentate, corolla blue. Capsules about 0.2 cm across, globose. Seeds oblong, with distinct funicle, acute at both ends, spirally striate.

Flowering and fruiting: July – November.

Distribution: India – Endemic to Peninsular India.

Reported Localities in districts: Kolhapur, Sindhudurg

Ecology: Commonly found growing on tree trunks and wet rocks of higher ghats in high rainfall regions. Altitude ranges between 900-1200m

Association: No specific plant association is observed.



Haritarium

Family Code: 207

Species code: 5 -1-1B

Naoroji Godrej Centre for Plant Research

***Epithema carnosum* Benth. var. *hispida* C.B. Clarke.**



1. Habit, 2. ,6.,8., Inflorescence, 3. Calyx, 4. Flower, 5. Capsule,7. Seeds, 9. Inflorescence with capsule, 10. Leaf - Dorsal view, 11. Leaf - ventral view.



Haritarium

Family Code: 207

Species code: 5 -1-1C

Naoroji Godrej Centre for Plant Research

***Epithema carnosum* Benth. var. *hispida* C.B. Clarke.**





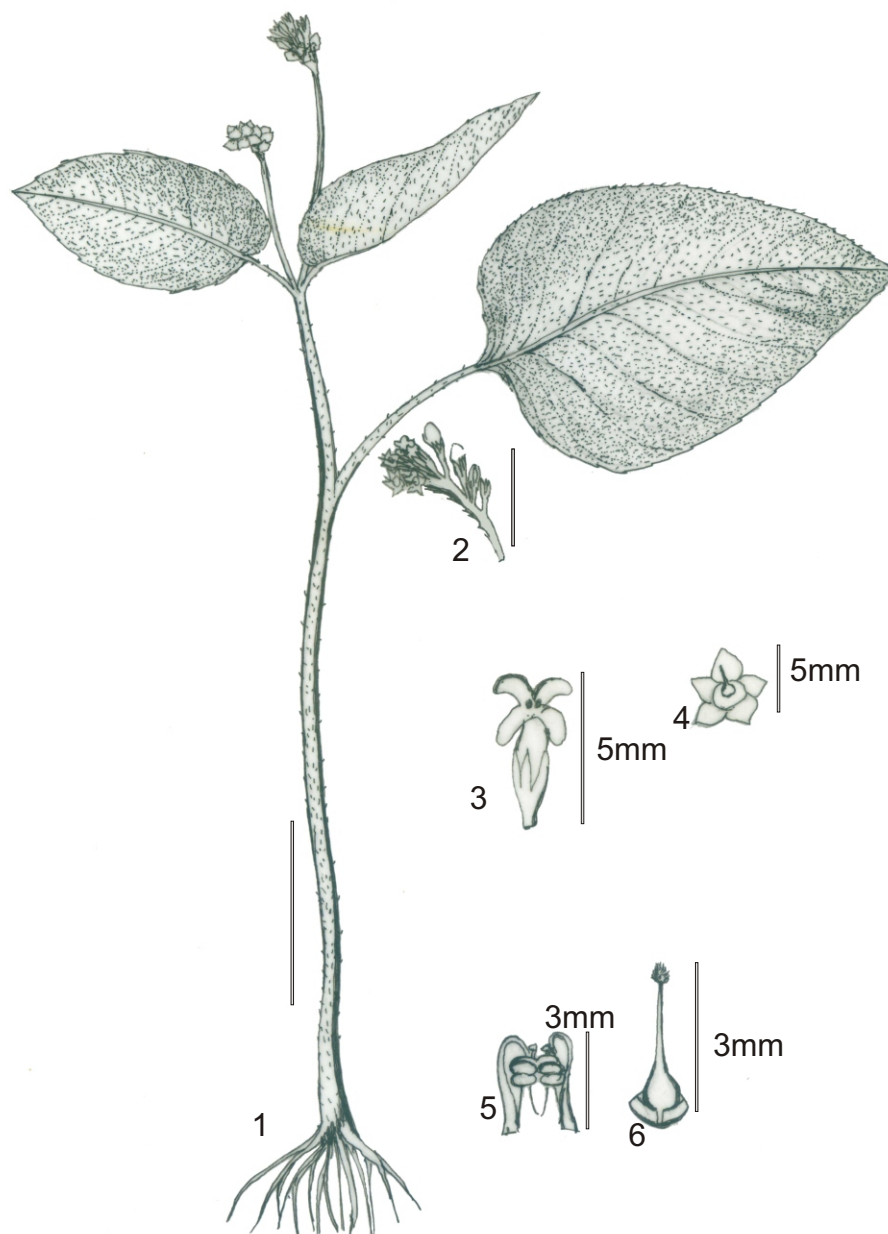
Haritarium

Family Code: 207

Species code: 5 -1-1D

Naoroji Godrej Centre for Plant Research

***Epithema carnosum* Benth. var. *hispida* C.B. Clarke.**



1. Habit, 2. Inflorescence, 3. Flower, 4. Developing capsule with persistent calyx,
5. Anthers, 6. Gynoecium



Haritarium

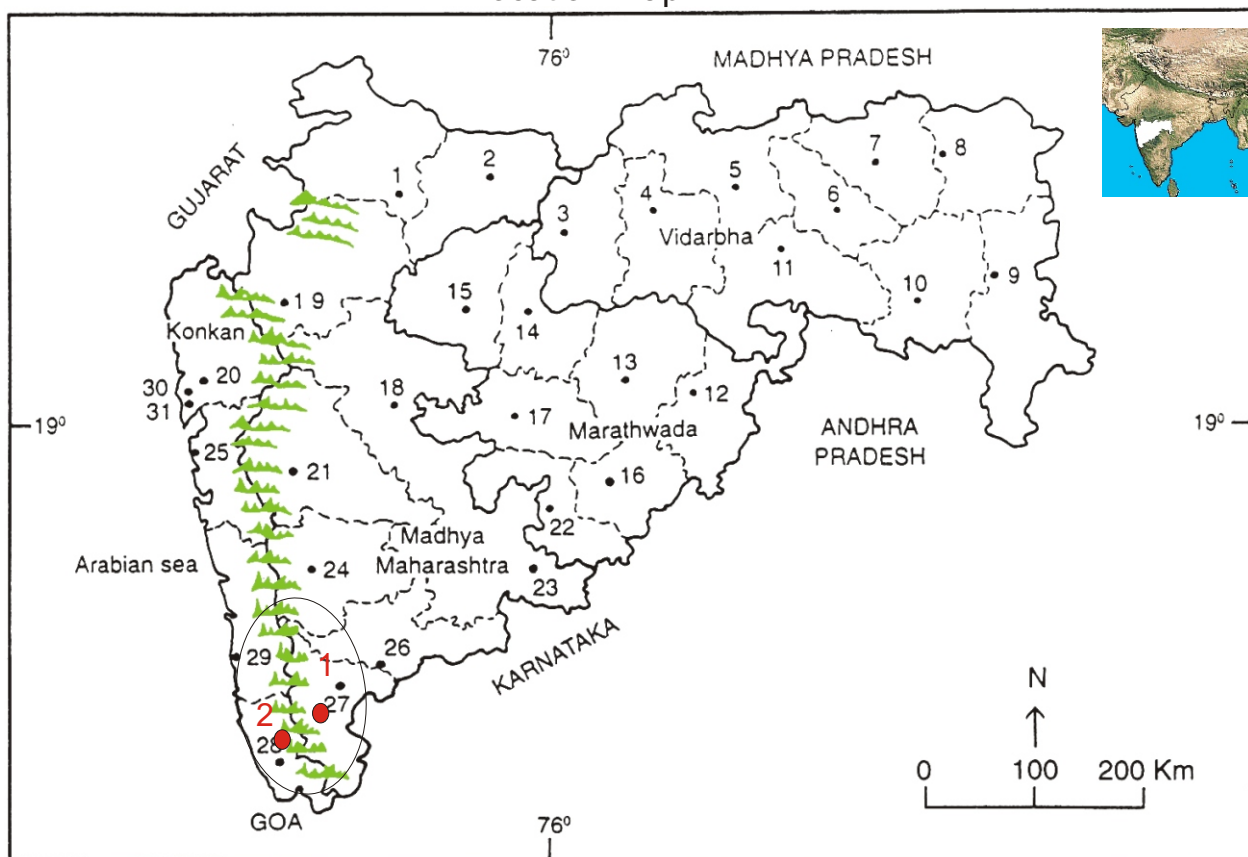
Family Code: 207

Species code: 5 -1-1E

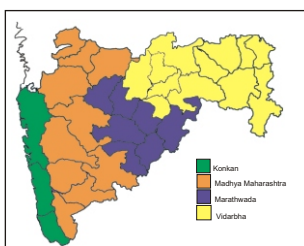
Naoroji Godrej Centre for Plant Research

***Epithema carnosum* Benth. var. *hispida* C.B. Clarke.**

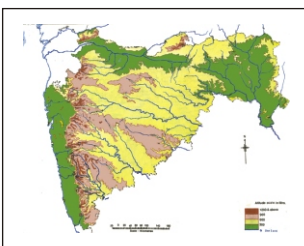
Location map



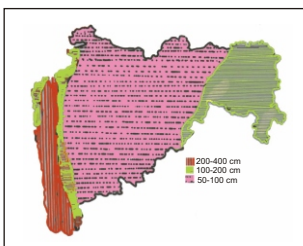
1.Dhule 2.Jalgaon 3. Buldhana 4.Akola 5.Amaravati 6.Wardha 7.Nagpur 8. Bhandara 9. Gadchiroli
10. Chandrapur 11. Yavatmal 12. Nanded 13. Parbhani 14. Jalna 15. Aurangabad 16.Latur
17. Beed 18. Ahmadnagar 19 Nashik 20. Thane 21. Pune 22. Osmanabad 23. Solapur 24.Satara
25. Raigad 26. Sangli 27. Kolhapur 28. Sindhudurg 29. Ratnagiri 30.Mumbai 31.Greater Mumbai.



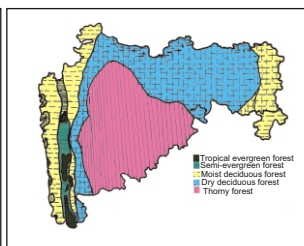
Geographical regions 1



Physical map 2



Rain fall map 3



Forest types 4

Distribution in following districts ●

1. Kolhapur, 2. Sindhudurg.

Geographical distribution in Maharashtra:

Latitude (DMS): 19° 58' - 17° 49' N & Longitude (DMS): 72° 58' -74° E.



Haritarium

Family Code: 207

Species code: 5 -1-1F

Naoroji Godrej Centre for Plant Research

Epithema carnosum Benth. var. hispida C.B. Clarke.

References:

Cooke. T (1904): **Flora of Presidency of Bombay**. Vol.2: 399(rep. Ed.1958)

Hooker, J.D. *et al.* (1875): **The flora of British India**. London. Vol.4: 369.

Singh N.P. & S. Karthikeyan (2000):(eds), **Flora of Maharashtra state, Dicotyledones**. Vol. I: . B.S.I., Calcutta: 569.