



**Haritarium**

Family Code: 1

Species code: 14 - 2A

**Naoroji Godrej Centre for Plant Research**

**Eranthemum roseum(Vahl) R.Br.**

**Botanical name:** *Eranthemum roseum* (Vahl)R.Br.

(=*Justicia rosea* Vahl., = *Daedalacanthus roseus* T. And.

**Vernacular name:** Dasamuli.

**Family :** Acanthaceae

**Status:** Endemic.

**Key characters:** Bracts white with green nerves; Calyx scarious; obovate, obtuse, mucronate or shortly apiculate, glandular-strigose; spikes 7.5 to 15 cm long, subinterrupted in elongate panicles, often solitary.

**Description:** Shrubs, 0.5 -2 m high. Leaves 12-20 X 3.5 to 7.5 cm, oblong-lanceolate, lineolate on both surfaces, apex acuminate, base tapering, often decurrent into the petiole, margins entire or obscurely crenulate, Flowers blue in often 3 cm long, subinterrupted, lax axillary and terminal spikes, solitary or occasionally 2 or 3 together forming a terminal panicle. Capsules 12 mm long, clavate, pointed. Seeds 0.3 -0.4 cm across, hygroscopically hairy, very densely so on the margin.

**Flowering and fruiting:** October - March.

**Distribution:** India

**Reported Localities:** Common throughout the State. Akola, Aurangabad, Bombay, Chandrapur, Dhule, Kolhapur, Nasik, Pune, Raigad; Ratnagiri, Satara, Sindhudurg, Yawatmal districts.

**Ecology:** On open grass land and rocky hilly slopes.

**Association:** Grasses.



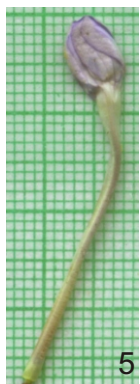
**Haritarium**

Family Code: 1

Species code: 14 - 2B

**Naoroji Godrej Centre for Plant Research**

***Eranthemum roseum*(Vahl) R.Br.**



1.Habitat, 2.Inflorescence, 3,&4,Flower, 5. Flower bud, Bract dorsal view, 7.Bract ventral view, 8.Leaf-ventral view, 9. Leaf-dorsal view. 10. Pod & Seed.



**Haritarium**

Family Code: 1

Species code: 14 - 2C

**Naoroji Godrej Centre for Plant Research**

***Eranthemum roseum*(Vahl) R.Br.**





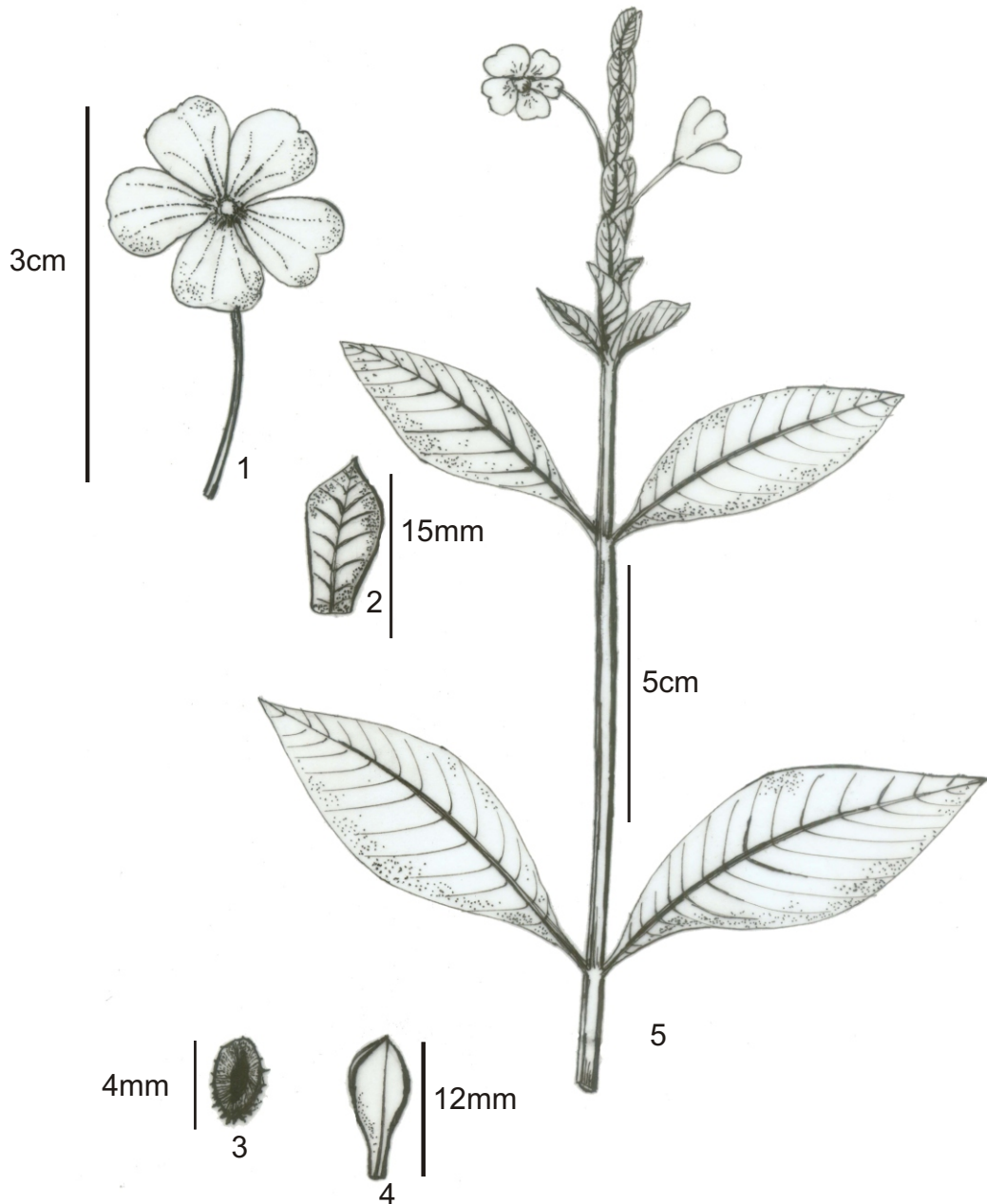
**Haritarium**

Family Code: 1

Species code: 14 - 2D

**Naoroji Godrej Centre for Plant Research**

***Eranthemum roseum*(Vahl) R.Br.**



1. Flower, 2. Bract, 3. Seed, 4. Pod, 5. Habit.



# Haritarium

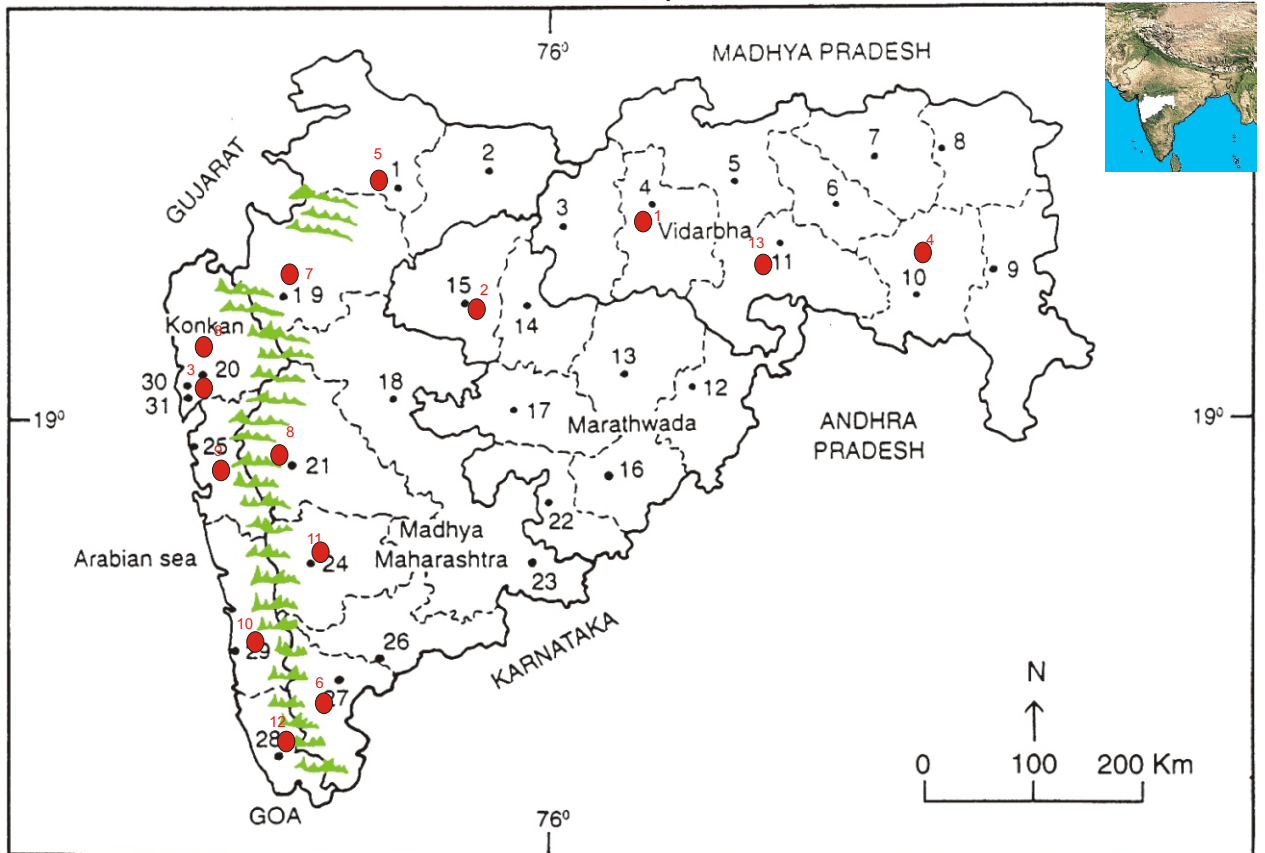
Family Code: 1

Species code: 14 - 2E

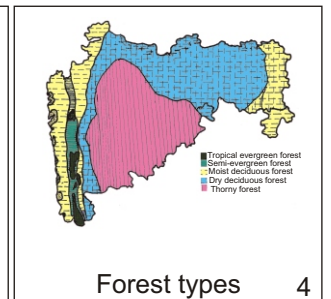
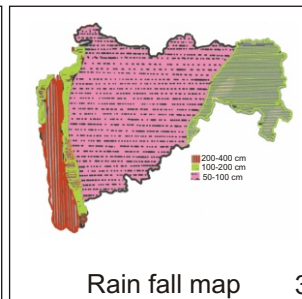
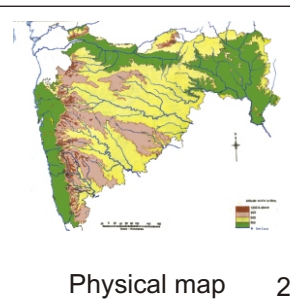
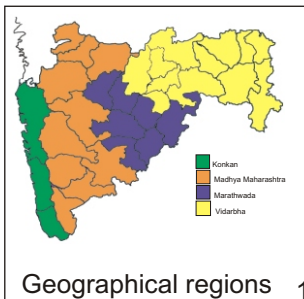
## Naoroji Godrej Centre for Plant Research

### *Eranthemum roseum*(Vahl) R.Br.

Location map



1.Dhule 2.Jalgaon 3. Buldhana 4.Akola 5.Amaravati 6.Wardha 7.Nagpur 8. Bhandara 9. Gadchiroli  
10. Chandrapur 11. Yavatmal 12. Nanded 13. Parbhani 14. Jalna 15. Aurangabad 16.Latur  
17. Beed 18. Ahmadnagar 19 Nashik 20. Thane 21. Pune 22. Osmanabad 23. Solapur 24.Satara  
25. Raigad 26. Sangli 27. Kolhapur 28. Sindhudurg 29. Ratnagiri 30.Mumbai 31.Greater Mumbai.



Localities- ●

1. Akola, 2. Aurangabad, 3. Bombay, 4. Chandrapur, 5. Dhule, 6. Kolhapur, 7. Nasik,  
8. Pune, 9. Raigad, 10. Ratnagiri, 11. Satara, 12. Sindhudurg, 13. Yawatmal.

Geographical distribution in Maharashtra:

Latitude (DMS): Between  $20^{\circ} 55'$  -  $17^{\circ} 49'$  N & Longitude (DMS):  $72^{\circ} 49'$  -  $79^{\circ} 17'$  E.



**Haritarium**

Family Code: 1

Species code: 14 - 2F

**Naoroji Godrej Centre for Plant Research**

**Eranthemum roseum(Vahl) R.Br.**

**References:**

Cooke, T. (1904): The Flora of Presidency of Bombay. Vol.2: 439. (rep. Ed.1958).

Hooker, J.D. *et al.* (1883): **The flora of British India**. London. Vol.4: 419.

Santapau, H. (1952): The acanthaceae of Bombay. Univ. Bombay Bot. Mem.2:iii +104.

Singh N.P. & S. Karthikeyan (2000):(eds), **Flora of Maharashtra state, Dicotyledones**. Vol. 2: . B.S.I., Calcutta:623.

Tetali, *et al.* (2000): **Endemic Plants of India ( A Status Report of Maharashtra State)**. Naoroji Godrej Centre for Plant Research, Shirwal: 40.