



Haritarium

Family Code: 579

Species code: 30 - 5A

Naoroji Godrej Centre for Plant Research

Eria Dalzellii Lindl.

Botanical name: *Eria Dalzellii* Lindl.

(=*Dendrobium dalzellii* Hook. Ex Dalz.)

Vernacular name: -

Family : Orchidaceae

Threatened category: -

Key characters: Epiphytic herbs. Pseudobulbs discoid, flowers zygomorphic, sepals free, labellum is modified into different shapes and colours, Lip spurred, stamen one or two., Style stigma and stamens adnate into a single into a single structure known as column or gynandrium., pollinia waxy, Fruit, a capsule, Seeds plenty without endosperm.

Description: Pseudobulbs 0.8-1.5 cm in diam, discoid, principal veins white and flabellate. Leaves sessile, 3-5, sheathing at base, 1-7 X 0.7-1.0 cm, elliptic to oblanceolate, obtuse, minutely papillose at margins. Racemes 3-9 cm long, erect, generally second or subsecund. Flowers greenish-yellow, bracteate. Capsules 0.5 X 0.15 cm, ellipsoid to obovoid.

Flowering and fruiting: July- October.

Distribution: India – Endemic to Western Ghats.

Reported Localities: Kolhapur, Nasik, Pune, Raigad; Ratnagiri, Satara, Sindhudurg, Thane.

Ecology: It occurs more in higher altitudes, 900m above sea level. Epiphytic on large mature trees like *Mangifera indica*, prefers to grow on trunk portions of evergreen trees.

Association: No specific plant association is observed.



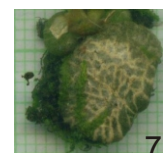
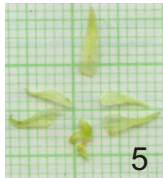
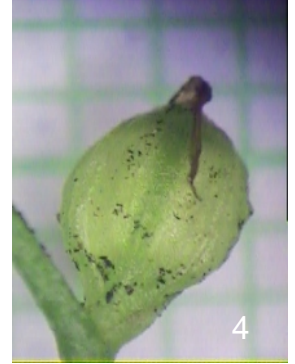
Haritarium

Family Code: 579

Species code: 30 - 5B

Naoroji Godrej Centre for Plant Research

Eria Dalzellii Lindl.



1.Habit, 2. Pseudo bulbs, 3. Flower, 4.Leaves -Dorsal view,5. Leaves- Ventral view.



Haritarium

Family Code: 579

Species code: 30 - 5C

Naoroji Godrej Centre for Plant Research

Eria Dalzellii Lindl.





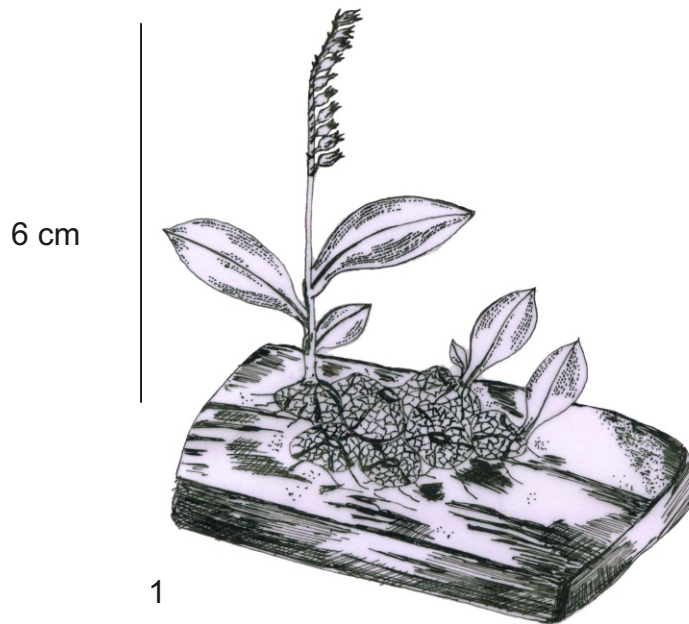
Haritarium

Family Code: 579

Species code: 30 - 5D

Naoroji Godrej Centre for Plant Research

Eria Dalzellii Lindl.



1

5 mm



2



3

1.7 cm

1.Habit, 2. Flower, 3.Dissected flower



Haritarium

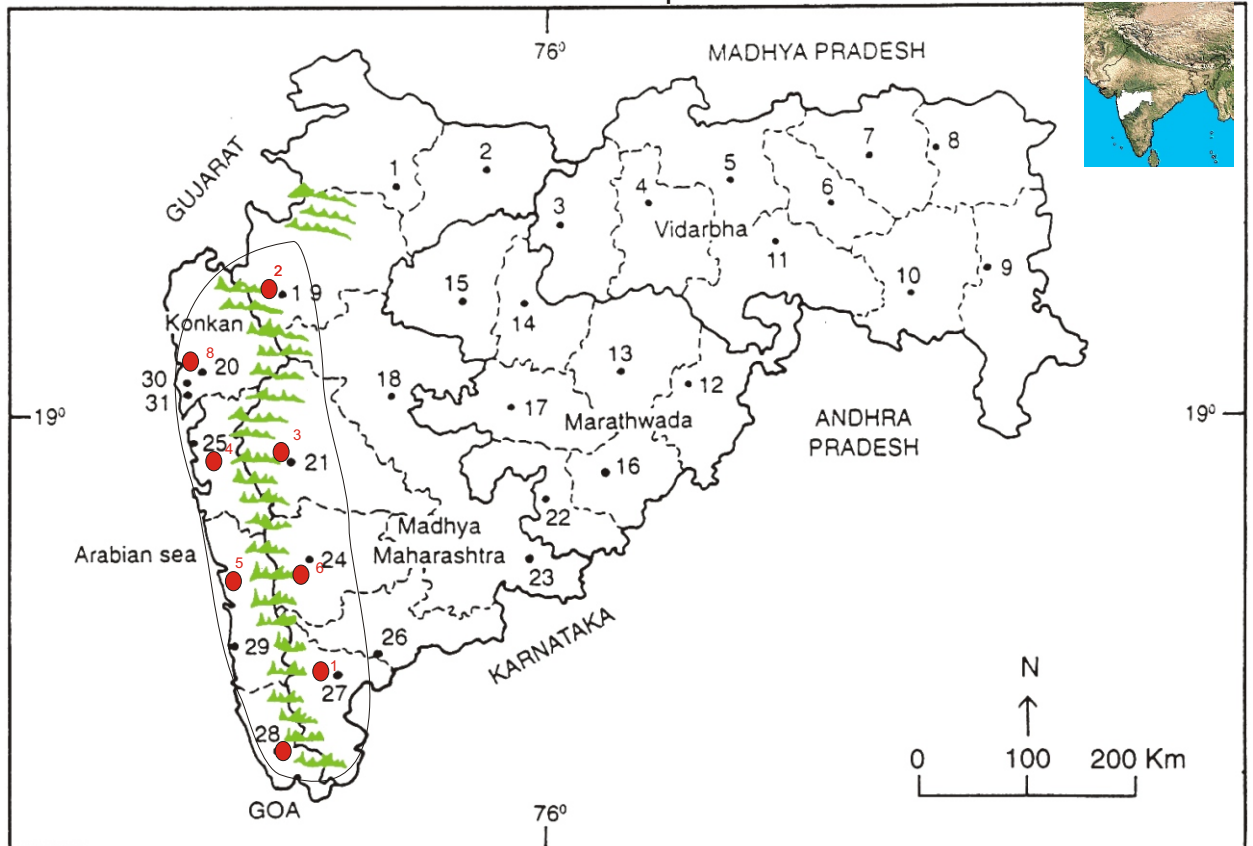
Family Code: 579

Species code: 30 - 5E

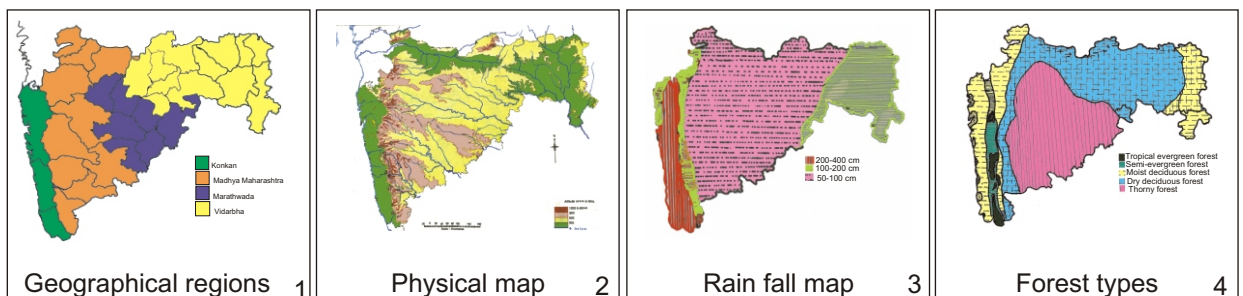
Naoroji Godrej Centre for Plant Research

Eria Dalzellii Lindl.

Location map



1. Dhule 2. Jalgaon 3. Buldhana 4. Akola 5. Amaravati 6. Vardha 7. Nagpur 8. Bhandara 9. Gadchiroli
 10. Chandrapur 11. Yavatmal 12. Nanded 13. Parbhani 14. Jalna 15. Aurangabad 16. Latur
 17. Beed 18. Ahmadnagar 19. Nashik 20. Thane 21. Pune 22. Osmanabad 23. Solapur 24. Satara
 25. Raigad 26. Sangli 27. Kolhapur 28. Sindhudurg 29. Ratnagiri 30. Thane 31. Mumbai.



Localities- ●

1. Ahmadnagar, 2. Nasik, 3. Pune, 4. Satara, 5. Sindhudurg, 6. Thane.

Geographical distribution in Maharashtra:

Latitude (DMS): 19° 11' - 17° 49' N & Longitude (DMS): 72° 58' - 74° 43' E.



Haritarium

Family Code: 579

Species code: 30 - 5F

Naoroji Godrej Centre for Plant Research

Eria Dalzellii Lindl.

References:

Cooke, T. (1904): **The Flora of Presidency of Bombay**. Vol.3: 193. (rep. Ed.1958).

Hooker, J.D. *et al.* (1890): **The flora of British India**. London. Vol.5: 789.

Laxminarasimhan, P. (1996): in B.D. Sharma, S. Karthikeyan & N.P. Singh (eds), **Flora of Maharashtra state, Monocot**. B.S.I., Calcutta:25.

Santapau, H. & Kapadia Z. (1966): **The Orchids of Bombay**: Manager of Publications, Delhi:14.

Tetali, *et al.* (2000): **Endemic Plants of India (A Status Report of Maharashtra State)**. Naoroji Godrej Centre for Plant Research, Shirwal: 80.