



**Haritarium**

Family Code: 484

Species code: 2 -1A

**Naoroji Godrej Centre for Plant Research**

**Erinocarpus nimmonii J.Graham**

**Botanical name:** *Erinocarpus nimmonii* J.Graham

**Vernacular name:** Chaora, Cher, Chira, Janglibhendi, Moduvakh, Varing.

**Family :** Tiliaceae

**Threatened category:** -

**Key characters:** Trees, Flower buds subglobose or ovoid; sepals 3.5 cm long fruits echinate, winged, triquetrous.

**Description:** Deciduous trees, about 9m long. Leaves 4.5-9.5 X 4.3 – 10.0 cm, orbicular, 5-7 lobed, base cordate, palmately veined. Flowers in lax terminal panicles, yellow. Bracts covered with rusty pubescent. Sepals free, narrowly linear, fulvous, tomentose outside; petals glandular at base, obovate, margins ciliate. Fruits 2.3 - 4.0 cm long, 1-4 celled, triquetrous, woody, angles winged. Seed 1 in each locule, oblong. Variation in fruit size, shape and number of wings is common.

**Flowering and fruiting:** September-December.

**Distribution:** India – Endemic to India.

**Reported Localities in districts:** Kolhapur, Mumbai, Nasik, Pune, Raigad, Ratnagiri, Satara, Sindhudurg and Thane.

**Ecology:** Occasionally found in scattered patches of deciduous forests, more frequently along the coastal side of the Western Ghats. Altitude ranges between 300-1200m.

**Association:** No specific plant association is observed.



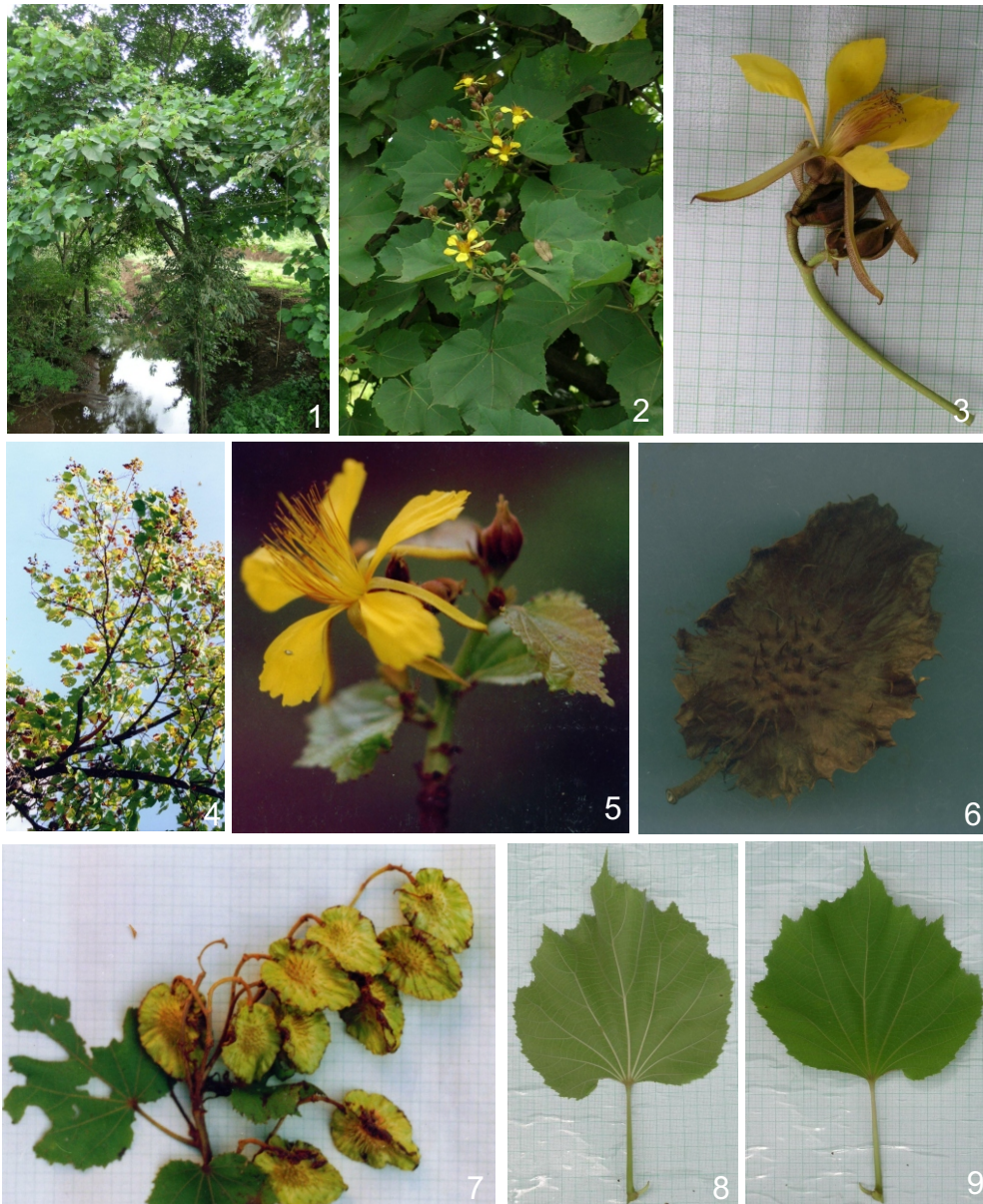
**Haritarium**

Family Code: 484

Species code: 2 -1B

**Naoroji Godrej Centre for Plant Research**

***Erinocarpus nimmonii* J.Graham**



1.Habitat, 2.& 4. Habit, 3. Flower, 5. Inflorescence, 6.Fruit, 7. Inflorescence, 8. Leaf- Dorsal side, 9. Leaf- Ventral side.



**Haritarium**

Family Code: 484

Species code: 2 -1C

**Naoroji Godrej Centre for Plant Research**

**Erinocarpus nimmonii J.Graham**





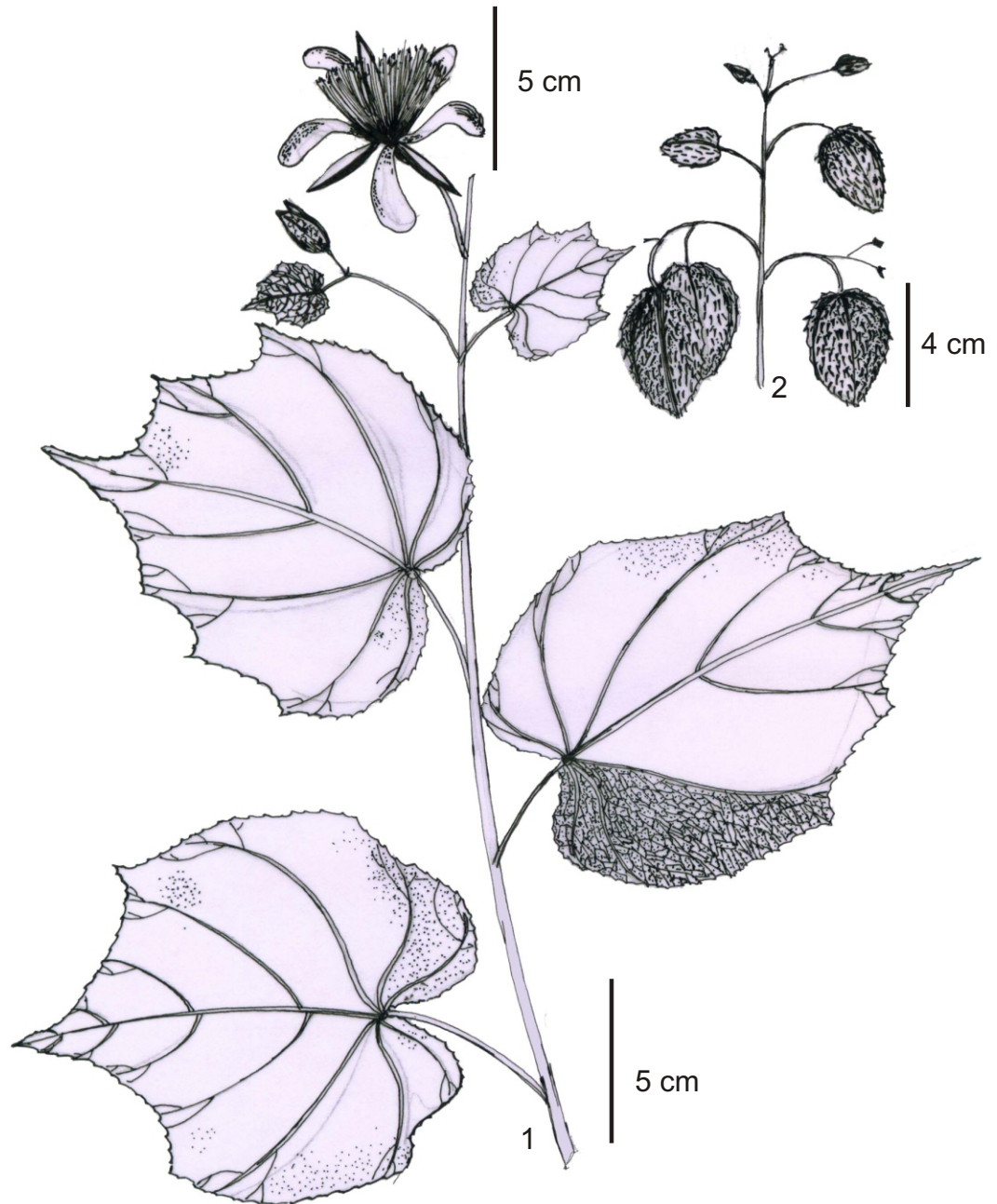
**Haritarium**

Family Code: 484

Species code: 2 -1D

**Naoroji Godrej Centre for Plant Research**

***Erinocarpus nimmonii* J.Graham**



1. Habit, 2. Fruits.



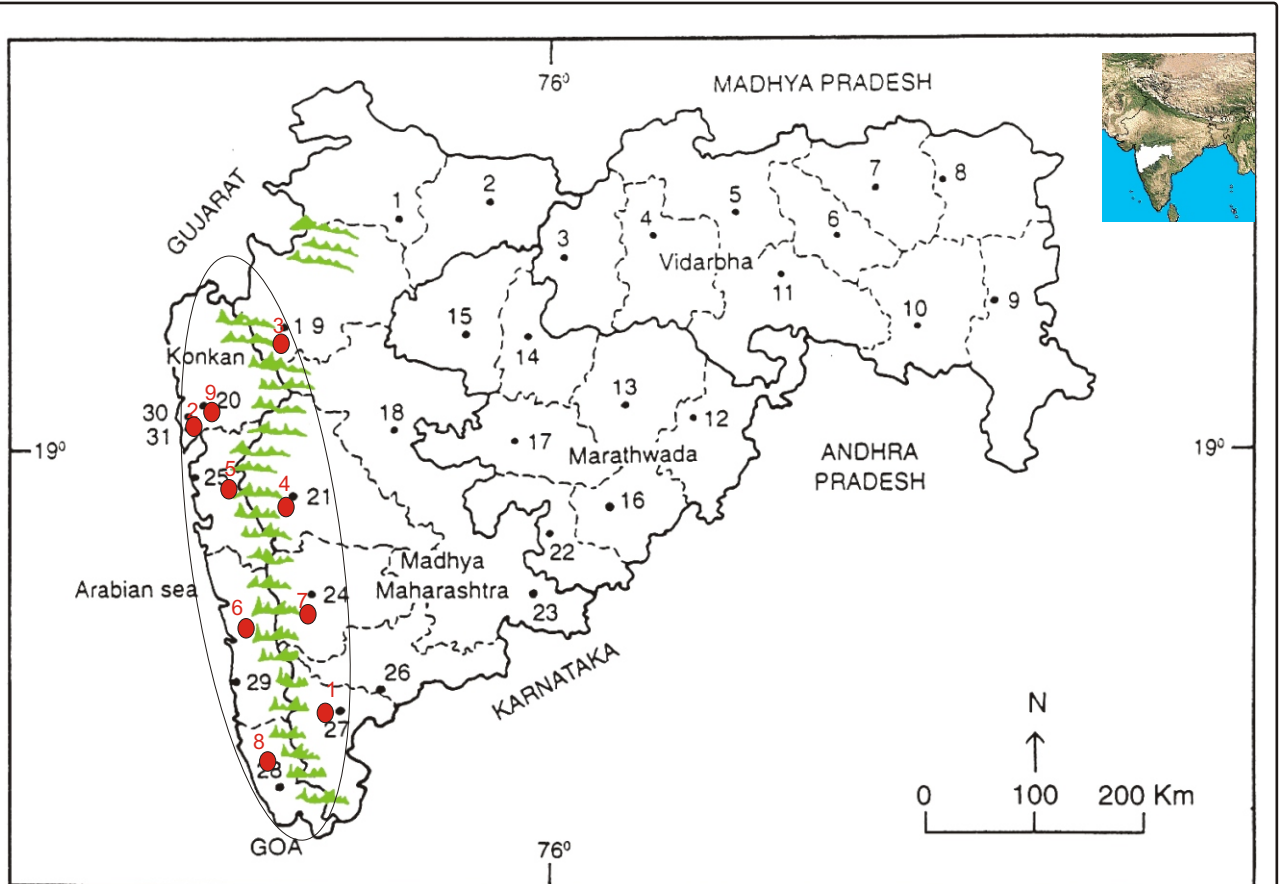
**Haritarium**

Family Code: 484

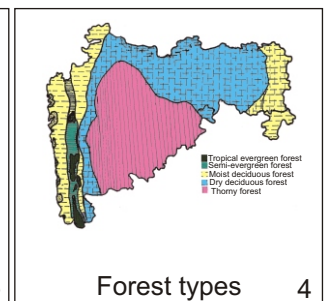
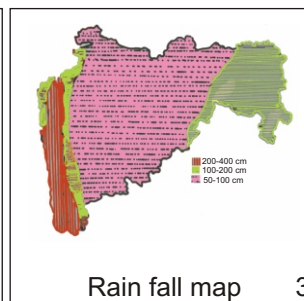
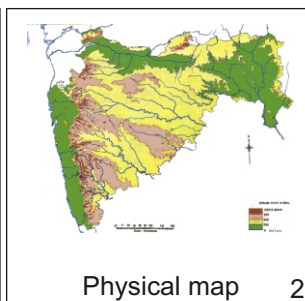
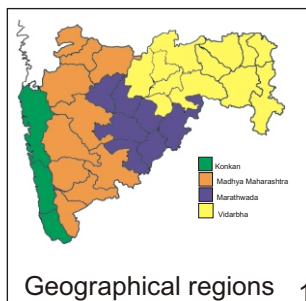
Species code: 2 -1E

**Naoroji Godrej Centre for Plant Research**

**Erinocarpus nimmonii J.Graham**



1.Dhule 2.Jalgaon 3. Buldhana 4.Akola 5.Amaravati 6.Wardha 7.Nagpur 8. Bhandara 9. Gadchiroli  
10. Chandrapur 11. Yavatmal 12. Nanded 13. Parbhani 14. Jalna 15. Aurangabad 16.Latur  
17. Beed 18. Ahmadnagar 19 Nashik 20. Thane 21. Pune 22. Osmanabad 23. Solapur 24.Satara  
25. Raigad 26.Sangli 27. Kolhapur 28. Sindhudurg 29. Ratnagiri 30.Mumbai 31.Greater Mumbai.



Distribution in following districts ●

1.Kolhapur, 2.Mumbai, 3.Nasik, 4.Pune, 5.Raigad, 6.Ratnagiri, 7.Satara, 8.Sindhudurg, 9.Thane.

Geographical distribution in Maharashtra:

Latitude (DMS): 19° 58' -16° 75' N , & Longitude (DMS): 72° 58' -74° 13' E.



**Haritarium**

Family Code: 484

Species code: 2 -1F

**Naoroji Godrej Centre for Plant Research**

**Erinocarpus nimmonii J.Graham**

**References:**

Cooke. T (1904): **Flora of Presidency of Bombay**. Vol.1:155.(rep. Ed.1958)

Hooker, J.D. *et al.*(1885):**The flora of British India**. London. Vol.1: 394.

Singh N.P. & S. Karthikeyan (2000):(eds), **Flora of Maharashtra state, Dicotyledones**.Vol. 1: . B.S.I., Calcutta:383.