



Haritarium

Family Code: 550

Species code: 1- 1A

Naoroji Godrej Centre for Plant Research

Eriocaulon breviscopum Koern.

Botanical name: *Eriocaulon breviscopum* Koern.

Vernacular name: -

Family : Eriocaulaceae

Status: Not evaluated but seems an endangered species.

Key characters: Plants occur in running water, Leaves 20 to 80cm long, leaves longer than flower head; flowers trimerous; anthers white; seed coat is devoid of appendages.

Description: Herbs, acaulescent, tufted. Leaves rosulate, with broad sheathing base, 20-80 X 0.25 0.4 cm, Scapes prominently smaller than leaves. Heads hemispherical, grey, 0.75-1.2 cm across. Involucral bract, spreading or reflexed, black, or the outer bracts pale. Floral bracts black, oblong-oblongate, acuminate, chartaceous, hoary. Male Flowers: Pedicellate, 0.75-1mm long, . Sepals obovate, connate into a spathe, 3-lobed, lobes obtuse, hoary towards apex.. Petal-3, unequal, middle one oblong, with a black gland in each petal. Female flowers: Pedicellate, 0.5mm long. Sepals 3, free unequal, conduplicate, acute hoary towards apex, straw coloured. Petals 3, free, subequal, spatulate, hyaline with a black gland in each petal. Seeds pale pink or yellow, subglobose, transversely elongated. Appendages absent.

Flowering and fruiting: October- April.

Distribution: India: Endemic to Western Peninsular India.

Reported Localities: Kolhapur, Satara districts.

Ecology: Occurs in running water in brooks and waste wears of lakes in high altitudes ranging between 900-1200m above sea level.

Association: No specific plant association is observed.



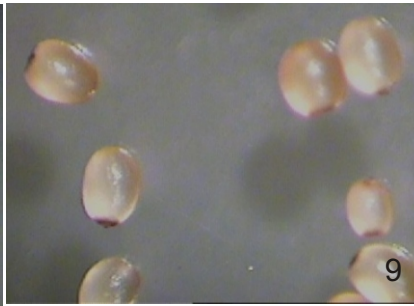
Haritarium

Family Code: 550

Species code: 1- 1B

Naoroji Godrej Centre for Plant Research

***Eriocaulon breviscapum* Koern.**



1.Habitat, 2. &3. Flowering head-Close-up view, 4.Involucral bract, 5-8. Bracts, 9. Seeds.



Haritarium

Family Code: 550

Species code: 1- 34C

Naoroji Godrej Centre for Plant Research

Eriocaulon breviscapum Koern.





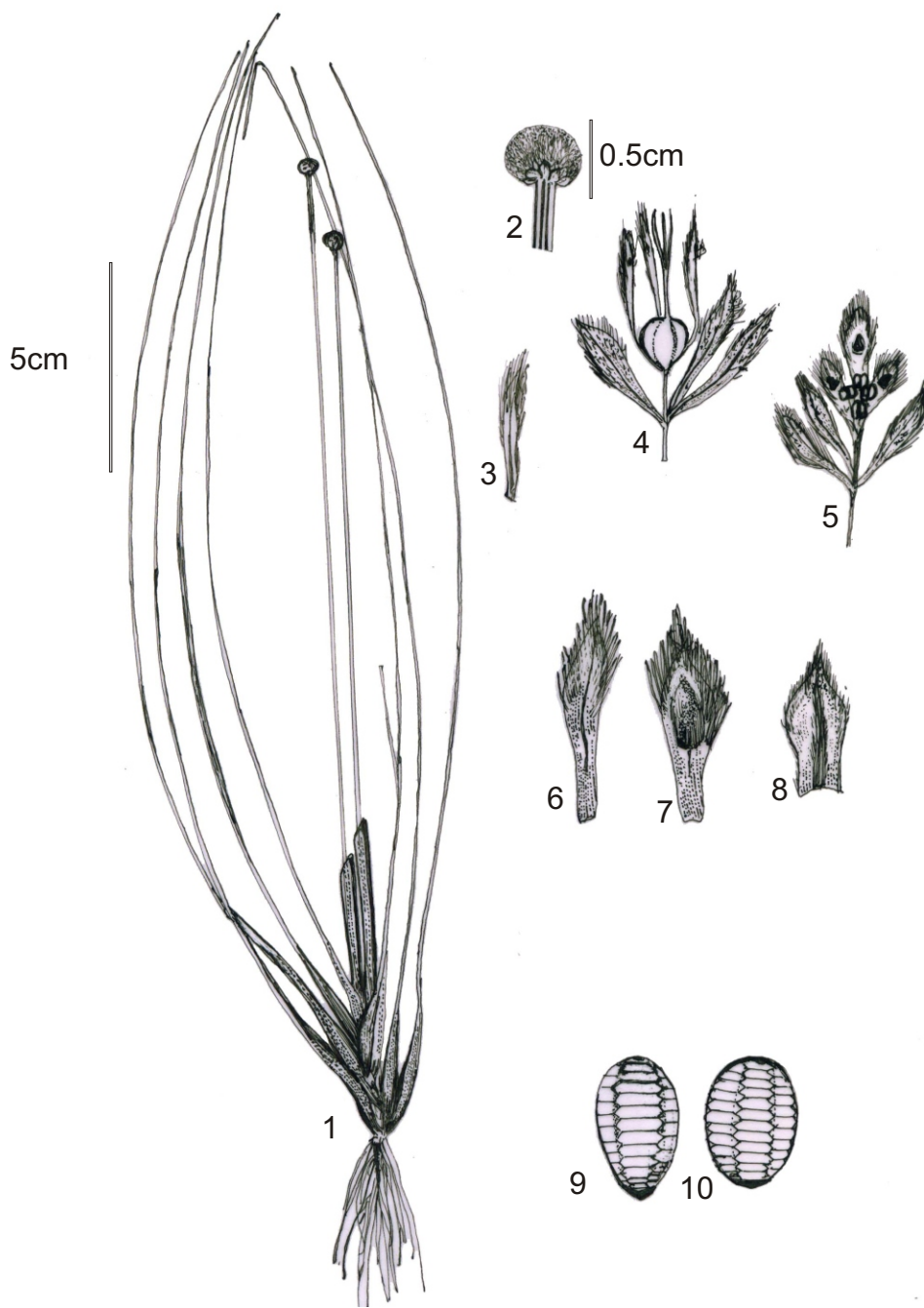
Haritarium

Family Code: 550

Species code: 1- 1B

Naoroji Godrej Centre for Plant Research

***Eriocaulon breviscapum* Koern.**



1. Habit, 2. Flowering head, 3. Bract, 4. Female flower, 5. Male flower, 6.-8. Floral bracts, 9. & 10. Seed.



Haritarium

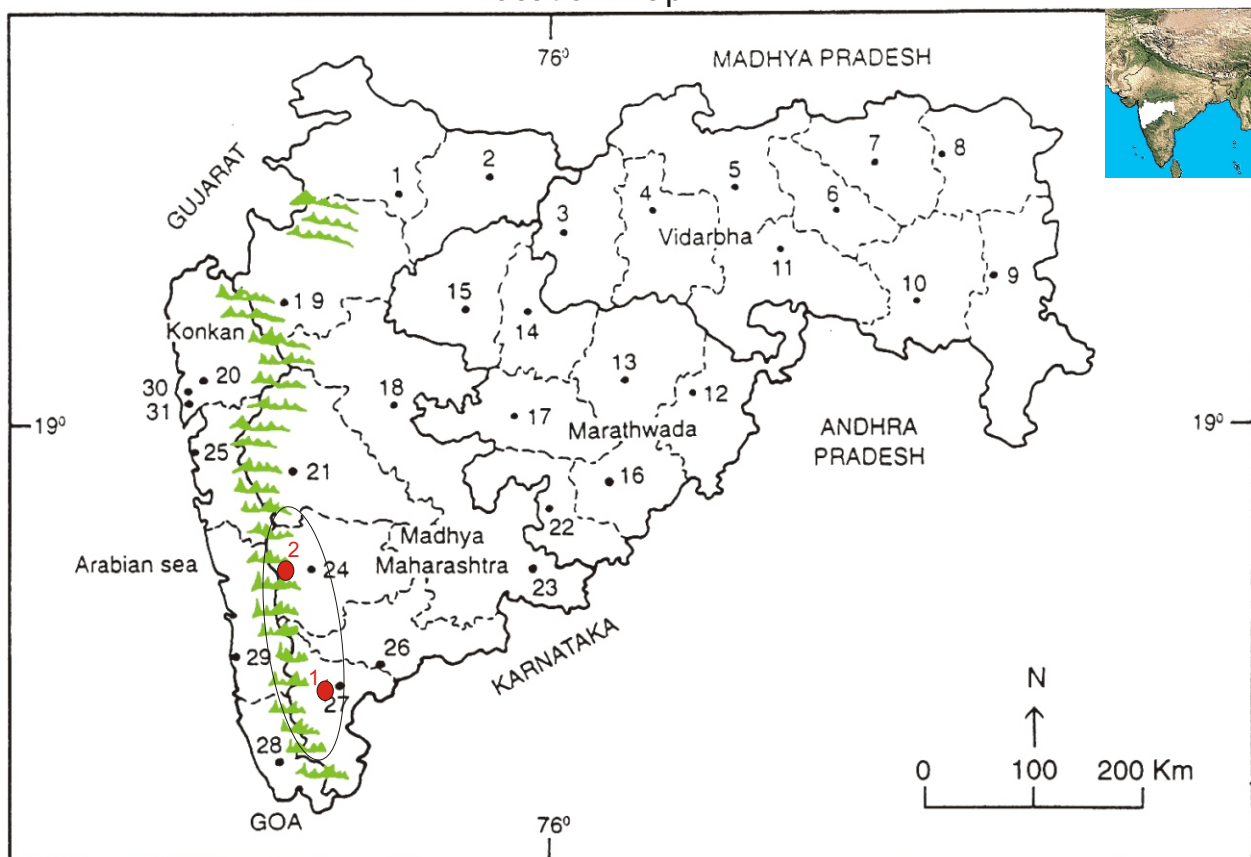
Family Code: 550

Species code: 1- 1E

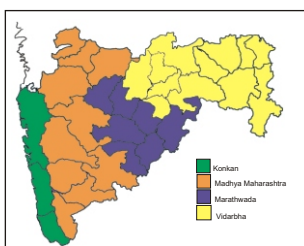
Naoroji Godrej Centre for Plant Research

Eriocaulon breviscopum Koern.

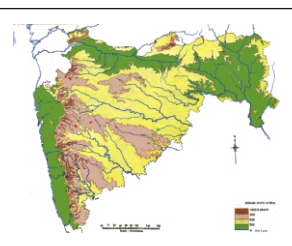
Location map



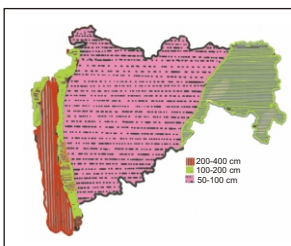
1.Dhule 2.Jalgaon 3. Buldhana 4.Akola 5.Amaravati 6.Wardha 7.Nagpur 8. Bhandara 9. Gadchiroli
10. Chandrapur 11. Yavatmal 12. Nanded 13. Parbhani 14. Jalna 15. Aurangabad 16.Latur
17. Beed 18. Ahmadnagar 19 Nashik 20. Thane 21. Pune 22. Osmanabad 23. Solapur 24.Satara
25. Raigad. 26.Sangli 27. Kolhapur 28. Sindhudurg 29. Ratnagiri 30.Mumbai 31.Greater Mumbai.



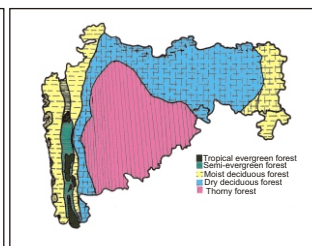
Geographical regions 1



Physical map 2



Rain fall map 3



Forest types 4

Distribution in following districts ●

1.Kolhapur, 2. Mumbai, 3.Raigad, 4. Satara, 5. Sindhudurg.

Geographical distribution in Maharashtra:

Latitude (DMS): 16° 95' - 15° 90' N & Longitude (DMS): 74° - 74° 13'E.



Haritarium

Family Code: 550

Species code: 1- 1F

Naoroji Godrej Centre for Plant Research

Eriocaulon breviscapum Koern.

References:

Ansari, R. & N.P. Balakrishnan (1994): **The family Eriocaulaceae in India**. Bishen Singh & Mahendra Pal Singh. Dehra Dun. Pp-198.

Cooke, T. (1904): The Flora of Presidency of Bombay. Vol.3:356. (2nd rep. Ed.1967).

Kulkarni, A.R. & M.H. Desai (1972): Family Eriocaulaceae in Kolhapur and its environs, *J. Bombay nat Hist. Soc.* **69**:231-235.

Laxminarasimhan, P.(1996): in B.D. Sharma, S. Karthikeyan & N.P.Singh (eds), **Flora of Maharashtra state, Monocot**. B.S.I., Calcutta: 247-248.

Tetali, *et al.* (2000): **Endemic Plants of India (A Status Report of Maharashtra State)**. Naoroji Godrej Centre for Plant Research, Shirwal: 62.