


Haritarium
Family Code: 550
Species code: 1- 5A
Naoroji Godrej Centre for Plant Research
Eriocaulon tuberiferum A.R.Kulk. & Desai
Botanical name: *Eriocaulon tuberiferum* A.R.Kulk. & Desai

Vernacular name: -

Family : Eriocaulaceae

Status: Not evaluated. It might fit into endangered category.

Key characters: Root tubers present, anthers white, Receptacles villous, Female sepals 2, Presence of ribbon like bands of appendages on the seed coat.

Description: Small herbs, acaulescent, up to 12cm long. Rootstock absent. tubers one to many, globose or ovoid, 4-5 mm across. Leaves rosulate, linear lanceolate, acuminate, up to 5 X 0.5 cm rigid, glabrous. Sheaths 6 cm long, glabrous; limb ovate, acuminate. Heads blackish to grey, spherical or hemispherical, upto 9 mm across. Receptacles convex, glabrous. Involucral bracts black reflexed, chartaceous, glabrous, oblong, acute or obtuse, upto 2 X 1 mm. Floral bracts oblanceolate, acute or acuminate, upto 2.5 X 0.75 mm, chartaceous, hoary dorsally towards apex, black. Male flowers: Pedicels almost 0.25 mm long. Sepals black, obovate, connate into a spathe, hoary towards apex, 2mm long, 3 obtuse lobes. Stipe of corolla 1 mm long Petal 3, unequal; hoary, with a black gland in each. Anthers 6, white, oblong,. Female flowers: Pedicels minute. Sepals 3 free, black, oblong-lanceolate, acute or obtuse, hoary towards apex, 1.5 mm long. Petals 3 free, sub equal, spatulate, not clawed, acute, 1.75-2.25 mm, apex black. pilose at the middle and hoary towards apex with a black gland in each. Ovary subsessile, globose, obtuse or epiculate, ca 0.53 X 0.42 mm. Seeds purple, oblong-ovoid, ceels of transversely elongated. Appendages form a continuous ribbon-like bands from transverse and vertical radial walls conforming to its length.

Flowering and fruiting: July to September.

Distribution: Maharashtra - Known only from a few localities

Reported Localities: Kolhapur, Mumbai, Raigad, Satara, Sindhudurg districts.

Ecology: Occasionally along the margins of puddles, particularly in high altitude plateaux between 900 -1200mm above sea level.

Association: No specific plant association is observed.



Haritarium

Family Code: 550

Species code: 1- 5B

Naoroji Godrej Centre for Plant Research

***Eriocaulon tuberiferum* A.R.Kulk. & Desai**



1. Habitat, 2.,3.,& 4. Flower head, 5. Female flower, 6. Male flower, 7. Anther, 8. floral bract, 9. Tuber, 10. Leaf sheath, 11. Leaf - dorsal view, 12. Leaf ventral view.



Haritarium

Family Code: 550

Species code: 1- 5C

Naoroji Godrej Centre for Plant Research

Eriocaulon tuberiferum A.R.Kulk. & Desai





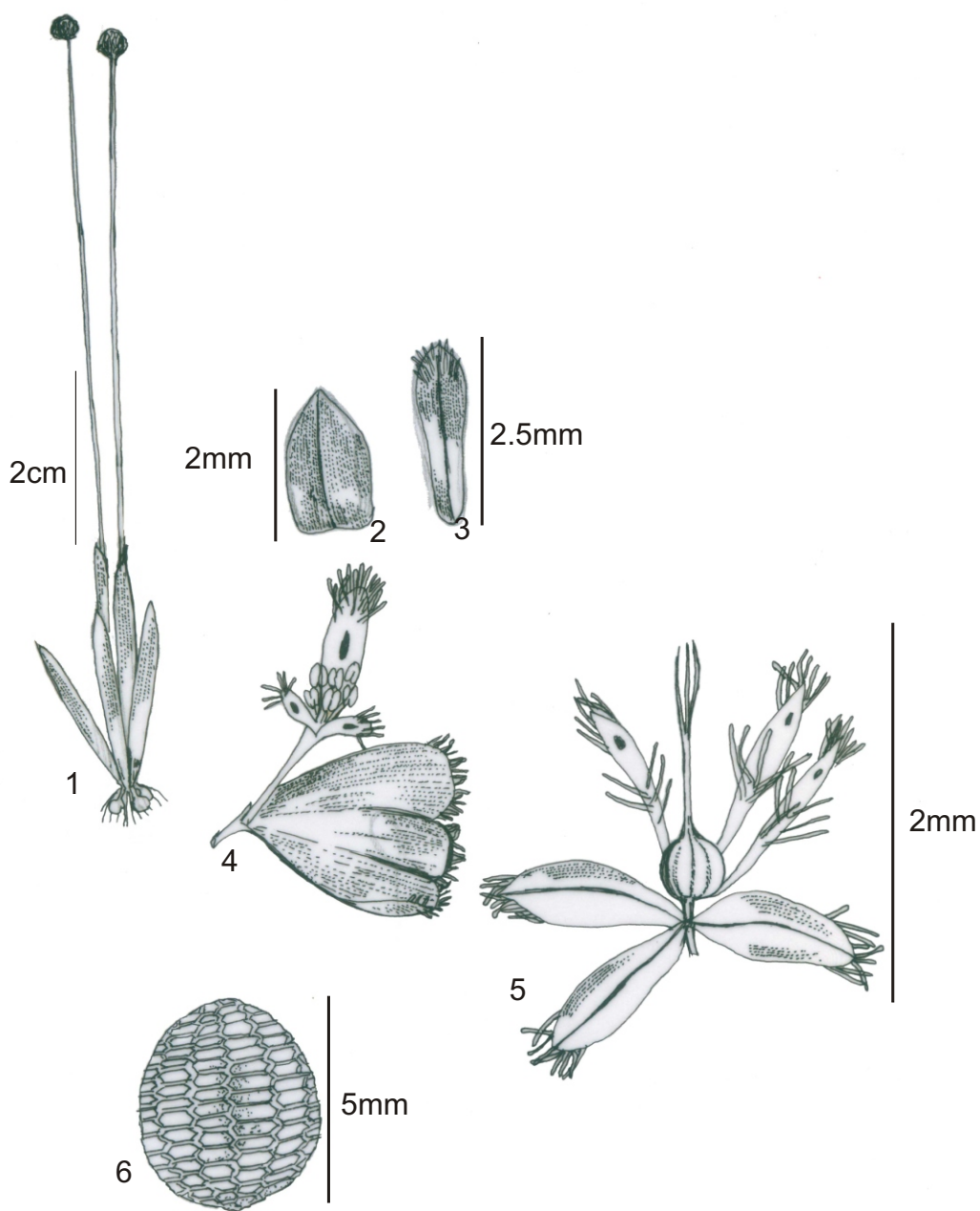
Haritarium

Family Code: 550

Species code: 1- 5D

Naoroji Godrej Centre for Plant Research

Eriocaulon tuberiferum Kulkarni & Desai



1. Habit, 2. Involucral bract, 3. Floral bract, 4. Female flower, 5. Male flower, 6. Seed.



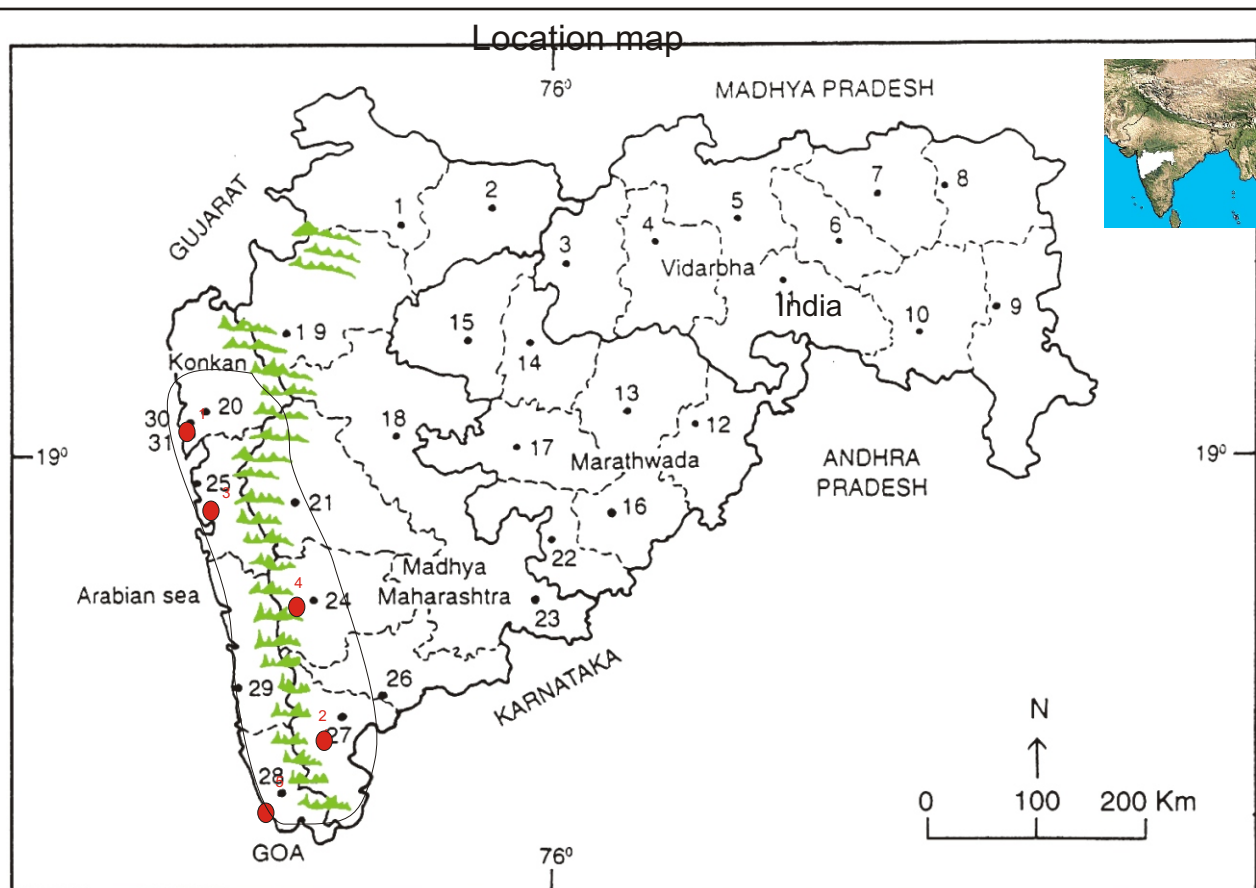
Haritarium

Family Code: 550

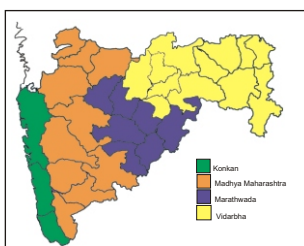
Species code: 1- 5E

Naoroji Godrej Centre for Plant Research

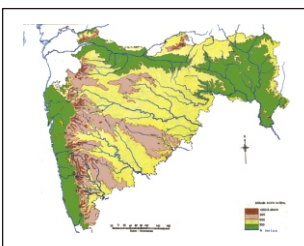
Eriocaulon tuberiferum A.R.Kulk. & Desai



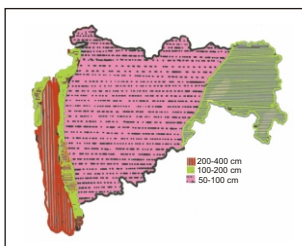
1.Dhule 2.Jalgaon 3. Buldhana 4.Akola 5.Amaravati 6.Wardha 7.Nagpur 8. Bhandara 9. Gadchiroli
10. Chandrapur 11. Yavatmal 12. Nanded 13. Parbhani 14. Jalna 15. Aurangabad 16.Latur
17. Beed 18. Ahmadnagar 19 Nashik 20. Thane 21. Pune 22. Osmanabad 23. Solapur 24.Satara
25. Raigad, 26.Sangli, 27. Kolhapur 28. Sindhudurg 29. Ratnagiri 30.Mumbai 31.Greater Mumbai.



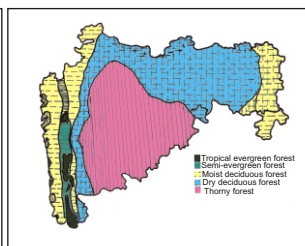
Geographical regions 1



Physical map 2



Rain fall map 3



Forest types 4

Distribution in following districts ●

1.Kolhapur, 2.Mumbai, 3.Raigad, 4.Satara, 5.Sindhudurg

Geographical distribution in Maharashtra:

Latitude (DMS): 16° 58' - 15° 90' N & Longitude (DMS): 73° 17' -74° 43'E.



Haritarium

Family Code: 550

Species code: 1- 5F

Naoroji Godrej Centre for Plant Research

Eriocaulon tuberiferum A.R.Kulk. & Desai

References:

Gaikwad S.P. & S.R. Yadav (2004): in T. Pullaiyah (ed.) Endemic flowering plant species of Maharashtra and their possible utilization; **Biodiversity in India**, Regancy publications, New Delhi: 53.

Kulkarni, A.R. & M.H. Desai (1971): Family Eriocaulaceae in Kolhapur and its environs, *J. Bombay nat Hist. Soc.* 71:81.

Laxminarasimhan, P. (1996): in B.D. Sharma, S. Karthikeyan & N.P. Singh (eds), **Flora of Maharashtra state, Monocot.** B.S.I., Calcutta: 267.

Tetali, *et al.* (2000): **Endemic Plants of India (A Status Report of Maharashtra State)**. Naoroji Godrej Centre for Plant Research, Shirwal: 64.