



Haritarium

Family Code: 118

Species code: 1 -5A

Naoroji Godrej Centre for Plant Research

Garcinia Indica Choisy

Botanical name: *Garcinia indica* Choisy
(=*Brindonia indica* Du Petit-Thou)

Vernacular name: *Amsul, Bhinda, Bhiran, Bhirand, Katambi, Kokam, Kokambi, Ratamba.*

Family : Clusiaceae (Guttiferae)

Threatened category: Low risk (Gaikwad & Yadav, 2004).

Key characters: Trees with yellow or reddish juice, lateral veins of leaves, reticulate, flowers small yellow, tetramerous, stigmas sessile or subsessile, fruits smooth, ovary 4-8 locular.

Description: Trees, 10-20 m tall; branches drooping, Leaves 8-11X 5-6 cm, ovate-oblong, elliptic-lanceolate, red when young, acute or abruptly acuminate at apex, narrowed at base, petiole 1 cm long. Flowers axillary or terminal, solitary or fascicles; male flowers 4-8; outer sepal smaller than inner; stamens on a short column, anthers 2-celled, dehiscing longitudinally; female flowers usually solitary; terminal staminodes about 20 in phalanges; stigma 4-8 rayed. Berries globose, 3 cm across, orange-pink when ripe, edible, sweet and sour, Seeds 5-8, compressed.

Flowering and fruiting: November- February.

Distribution: India – Endemic to India.

Reported Localities in districts: Amravati, Kolhapur, Mumbai, Pune, Raigad, Ratnagiri, Satara, Sindhudurg, Thane.

Ecology: Frequent in evergreen and deciduous forests along coast and windward side of Western Ghats.

Association: No specific association is noted.



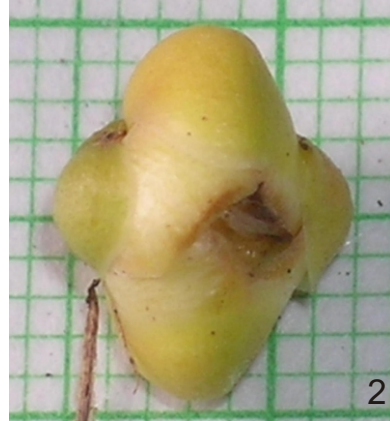
Haritarium

Family Code: 118

Species code: 1 -5B

Naoroji Godrej Centre for Plant Research

Garcinia Indica Choisy



1. Habit, 2. Flower 3. Dissected flower, 4. Fruit, 5. Leaf: Dorsal view, 6: Leaf: ventral view



Haritarium

Family Code: 118

Species code: 1-5C

Naoroji Godrej Centre for Plant Research

Garcinia Indica Choisy





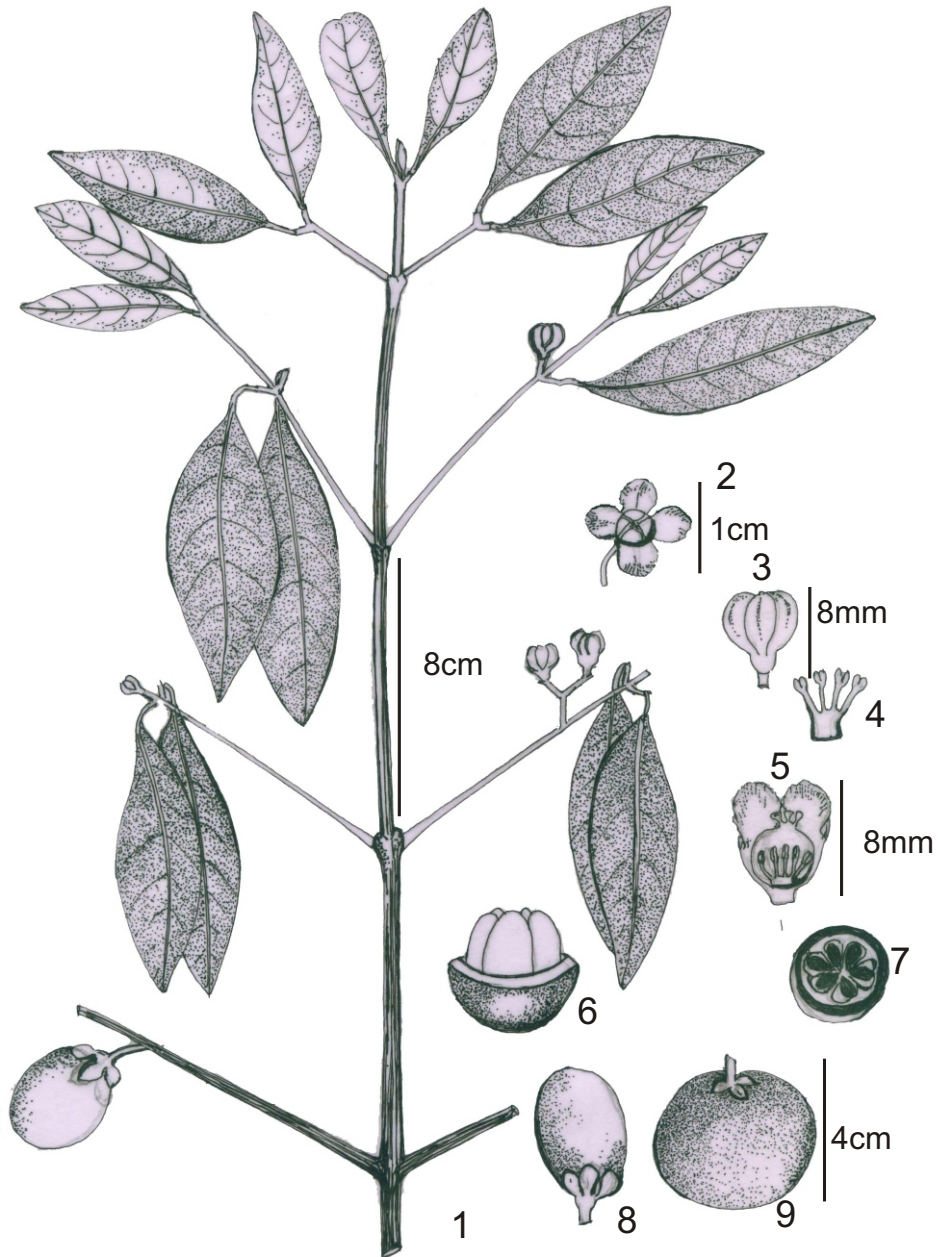
Haritarium

Family Code: 118

Species code: 1 -5D

Naoroji Godrej Centre for Plant Research

Garcinia Indica Choisy



1. Branch, 2,3. Flower, 4. Anthers, 5. V.S. of flower, 6.&7. Dissected fruit, 8. & 9. Fruit.



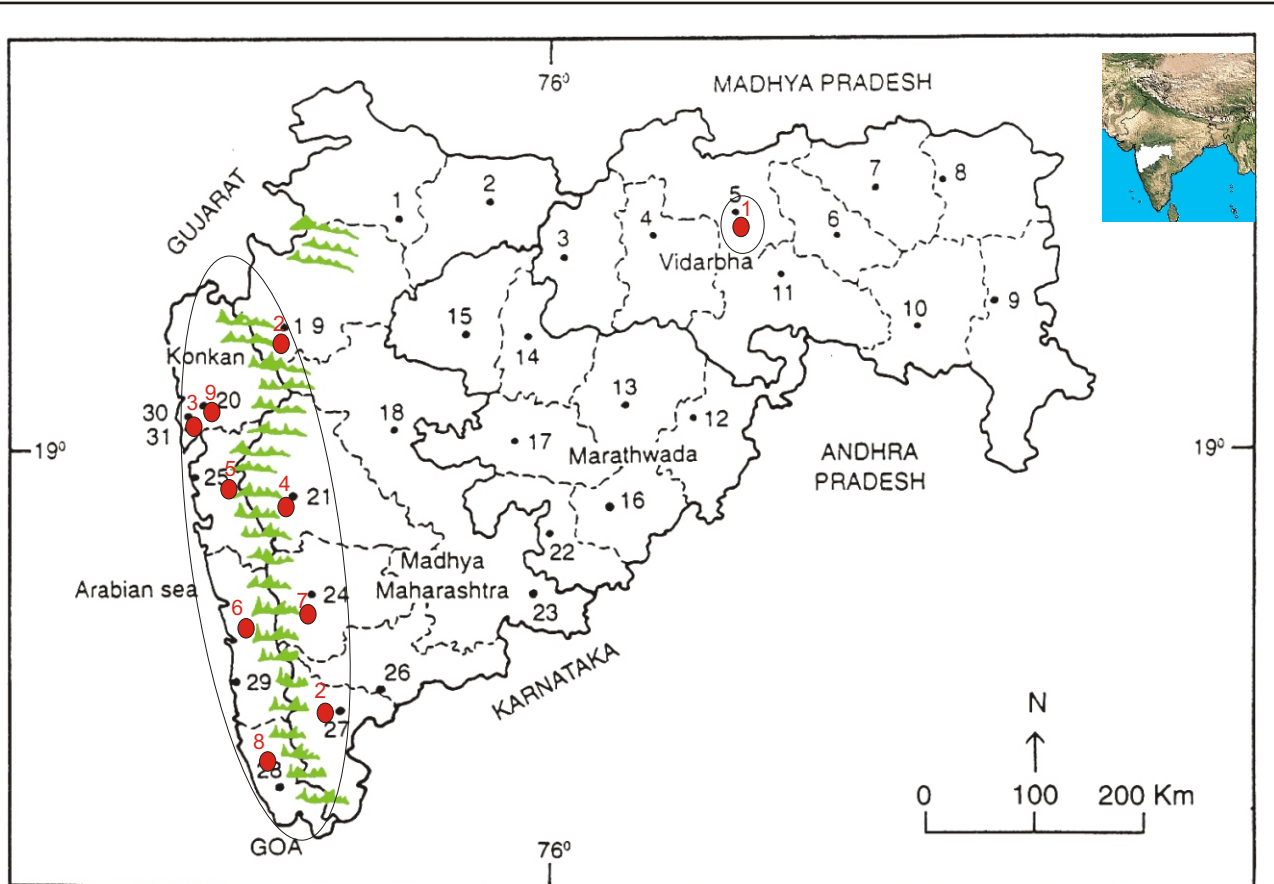
Haritarium

Family Code: 118

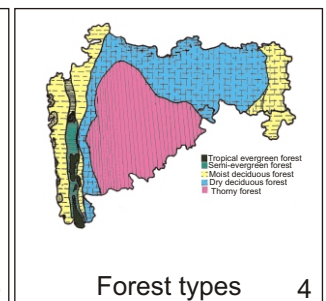
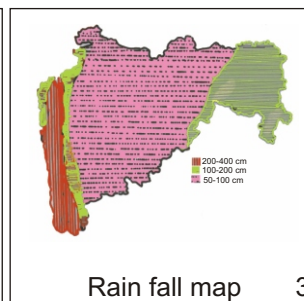
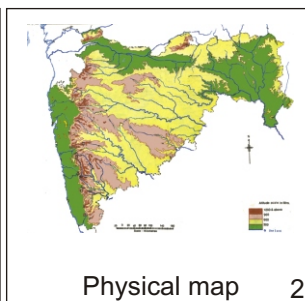
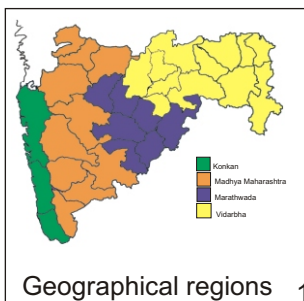
Species code: 1 -5E

Naoroji Godrej Centre for Plant Research

Garcinia Indica Choisy



1.Dhule 2.Jalgaon 3. Buldhana 4.Akola 5.Amaravati 6.Wardha 7.Nagpur 8. Bhandara 9. Gadchiroli
10. Chandrapur 11. Yavatmal 12. Nanded 13. Parbhani 14. Jalna 15. Aurangabad 16.Latur
17. Beed 18. Ahmadnagar 19 Nashik 20. Thane 21. Pune 22. Osmanabad 23. Solapur 24.Satara
25. Raigad 26.Sangli 27. Kolhapur 28. Sindhudurg 29. Ratnagiri 30.Mumbai 31.Greater Mumbai.



Distribution in following districts ●

1.Amravati, 2.Kolhapur, 3.Mumbai, 4.Pune, 5.Raigad, 6.Ratnagiri, 7.Satara, 8.Sindhudurg, 9.Thane.

Geographical distribution in Maharashtra:

Latitude (DMS): 20° 55', 19° 58' -16° 75' N , & Longitude (DMS): 72° 58' -74° 13', 77° 45' E.



Haritarium

Family Code: 118

Species code: 1 -5F

Naoroji Godrej Centre for Plant Research

Garcinia Indica Choisy

References:

Cooke. T (1904): **Flora of Presidency of Bombay**. Vol.1: 80.(rep. Ed.1958)

Hooker, J.D. *et al.*(1874):**The flora of British India**. London. Vol.1: 261.

Sharma B.D., N.P. Balakrishnan, R.R. Rao and P.K. Hajra(1993): (eds) **Flora of India** vol.3: Botanical Survey of India , Calcutta: 113.

Singh N.P. & S. Karthikeyan (2000):(eds), **Flora of Maharashtra state, Dicotyledones**.Vol.1: . B.S.I., Calcutta: 276.

Tetali, *et al.* (2000): **Endemic Plants of India (A Status Report of Maharashtra State)**. Naoroji Godrej Centre for Plant Research, Shirwal:15.