



Haritarium

Family Code: 118

Species code: 1 -3A

Naoroji Godrej Centre for Plant Research

Garcinia talbotii Raizada

Botanical name: *Garcinia talboti* Raizada

(*G. ovalifolius* var. *macrantha* T. , *G. spicata* var. *macrantha*.)

Vernacular name: *Limboi, Pansara, Tavir*

Family : Clusiaceae (Guttiferae)

Threatened category: Low risk (Gaikwad & Yadav, 2004).

Key characters: Trees with yellow juice, lateral veins of leaves, reticulate, flowers small yellow, pentamerous, stigmas sessile or subsessile.

Description: Small trees, 5-10 m tall; branchlets angular. Leaves about 14 X 7 cm, coriaceous, broadly oblong, obtuse, rounded at base; lateral nerves 16-18 pairs., prominent on both surfaces, anastomosing; petioles about 1.5 cm. Male flowers in congested short fascicles, 1.8 cm across; sepals and petal 5 each, greenish-white; stamens in 5 phalanges, antipetalous, anthers 2- celled. Female flowers in fascicles; staminodes five, ovary globose, 3-4-locular, stigma 3 lobed, spreading. Berries 4-6 cm across. oblong, yellow.

Flowering and fruiting: December – January.

Distribution: India – Endemic to Peninsular India.

Reported Localities : Kolhapur, Pune, Raigad, Ratnagiri, Satara, Sindhudurg, Thane.

Ecology: occasional in semi-evergreen forests of Western Ghats. Altitude ranging between 600-1200m.

Association: No specific plant association is observed.



Haritarium

Family Code: 118

Species code: 1 -3B

Naoroji Godrej Centre for Plant Research

***Garcinia talbotii* Raizada**



1. Habit, 2. Flowers, 3. Inflorescence, 4. Branch, 5. Leaf- dorsal view, 6. Leaf- ventral view



Haritarium

Family Code: 118

Species code: 1 -3C

Naoroji Godrej Centre for Plant Research

Garcinia talbotii Raizada





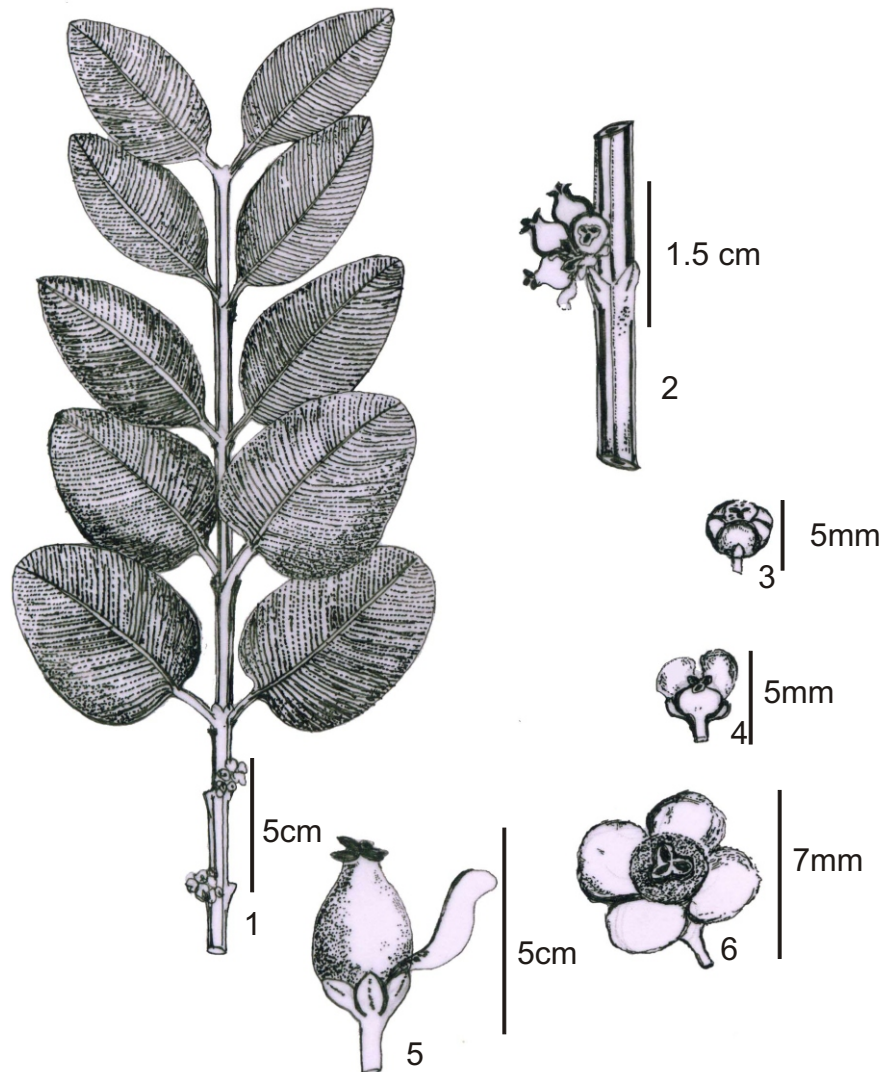
Haritarium

Family Code: 118

Species code: 1 -3D

Naoroji Godrej Centre for Plant Research

Garcinia talbotii Raizada



1. Flowering branch, 2. Inflorescence, 3. Bud, 4. Dissected flower, 5. Fruit, 6. Flower,



Haritarium

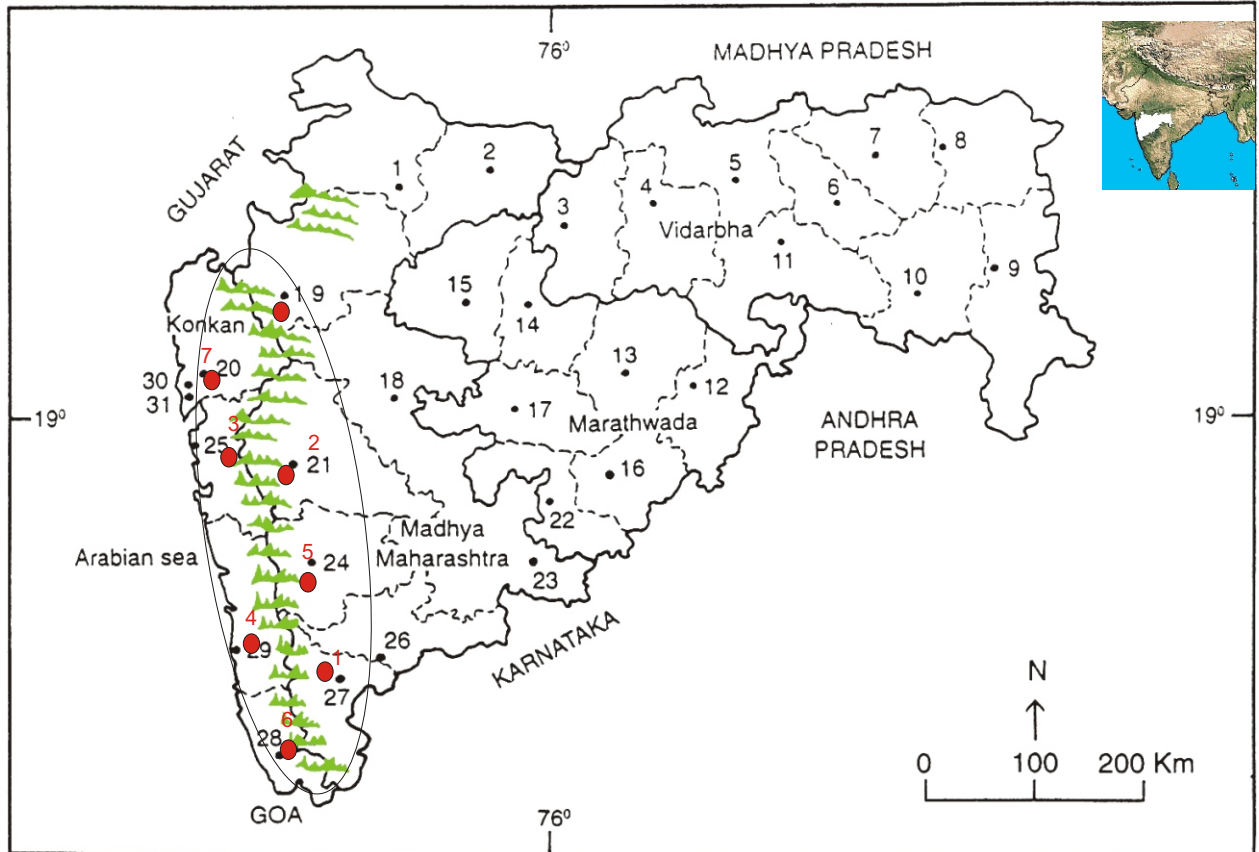
Family Code: 118

Species code: 1 -3E

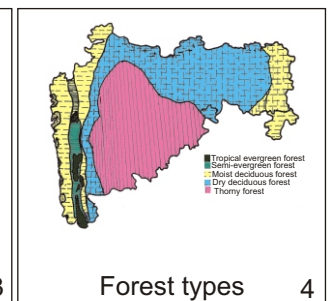
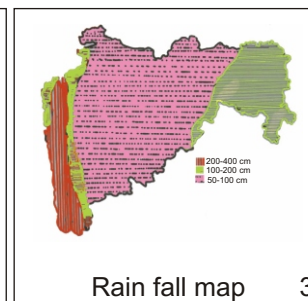
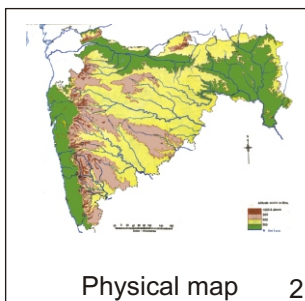
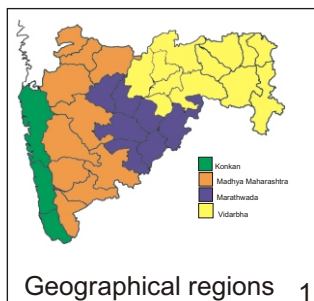
Naoroji Godrej Centre for Plant Research

Garcinia talbotii Raizada

Location map



- 1.Dhule 2.Jalgaon 3. Buldhana 4.Akola 5.Amaravati 6.Wardha 7.Nagpur 8. Bhandara 9. Gadchiroli
 10. Chandrapur 11. Yavatmal 12. Nanded 13. Parbhani 14. Jalna 15. Aurangabad 16.Latur
 17. Beed 18. Ahmadnagar 19 Nashik 20. Thane 21. Pune 22. Osmanabad 23. Solapur 24.Satara
 25. Raigad 26.Sangli 27. Kolhapur 28. Sindhudurg 29. Ratnagiri 30.Mumbai 31.Greater Mumbai.



Distribution in following districts ●

1. Kolhapur, 2. Pune, 3. Raigad, 4. Ratnagiri, 5. Satara, 6. Sindhudurg, 7.Thane.

Geographical distribution in Maharashtra:

Latitude (DMS): 19° 58' -16° 75' N & Longitude (DMS): 72° 58' -74° 13' E.



Haritarium

Family Code: 118

Species code: 1 -3F

Naoroji Godrej Centre for Plant Research

Garcinia talbotii Raizada

References:

Cooke. T (1904): **Flora of Presidency of Bombay**. Vol.1: 83.(rep. Ed.1958)

Hooker, J.D. *et al.*(1874):**The flora of British India**. London. Vol.1: 269.

Sharma B.D., N.P. Balakrishnan, R.R. Rao and P.K. Hajra(1993): (eds) **Flora of India** vol.3: Botanical Survey of India , Calcutta: 127.

Singh N.P. & S. Karthikeyan (2000):(eds), **Flora of Maharashtra state, Dicotyledones**.Vol.1: . B.S.I., Calcutta: 277.

Tetali, *et al.* (2000): **Endemic Plants of India (A Status Report of Maharashtra State)**. Naoroji Godrej Centre for Plant Research, Shirwal:15.