



Haritarium

Family Code: 579

Species code: 4 -16A

Naoroji Godrej Centre for Plant Research

Habenaria heyneana Lindl.

Botanical name: *Habenaria heyneana* Lindl.

(=*H. subpubens* A. Rich., =*H. glabra* A. Rich., =*H. candida* Dalz., =*H. cerea* Blatt. & McC., =*H. cerea* var. *Polyantha* Blatt. & McC.)

Vernacular name: -

Family : Orchidaceae

Threatened category:

Key characters: Ground orchid; Stem leafy upwards, Flowers white, then yellow drying black; secund, lateral lobes of lip not broader than midlobe, linear oblong to linear filiform.

Description: Terrestrial herb, 8-40 cm tall. Tubers 1, rarely 2, somewhat ovoid or oblong-ovoid. Leaves alternately imbricating or subdistichous to distichous, coriaceous, narrowly oblong-lanceolate to lanceolate 1-7 X 0.5-2cm. Inflorescence 2-14 cm long, lax (rarely dense) racemes., secund. Flowers bracteate, shortly pedicellate, greenish-white when young, turning yellowish with age, and black on drying or preservation in formalin solution. Bracts 12-22 X 4-8 mm, longer or shorter than the flowers, oblong to oblong-lanceolate, acute. Sepals unequal, greenish-whitish when young, turning yellowish with age, acute, rarely mucronate, dorsal sepal oblong or oblong-elliptic 7-9 X 2-5 mm, lateral sepals, subfalcate, linear or narrowly oblong, acute 8-10 X 2-4 mm. Lip 5-10 X 4-6 mm. 3-lobed, deflexed; lateral lobes shorter than the middle one, falcate, narrowly-oblong, entire, acute; midlobe oblong or elliptic-oblong, slightly tapering to the acute or obtuse apex, longer than the side lobes. Spur about 6 mm long, narrowly linear, slightly bent about the middle or straight, widening out uniformly from a little before the middle, obtuse. Stigmatic processes clavate. Ovary 1-4 cm, stalk about 3 mm long. Capsule fusiform, curved.

Flowering and fruiting: August –November.

Distribution: India - Endemic to Western Ghats.

Reported Localities: Khandala, konkan, Karli, Purandhar, Bhimashankar, Panchgani, Mahabaleshwar.

Ecology: Occasionally seen growing on high altitudes grass land and plateaus. Altitude ranges between 900-1200m above sea level.

Association: No specific plant association is observed.



Haritarium

Family Code: 579

Species code: 4 -16F

Naoroji Godrej Centre for Plant Research

***Habenaria heyneana* Lindl.**





Haritarium

Family Code: 579

Species code: 4 -16C

Naoroji Godrej Centre for Plant Research

Habenaria heyneana Lindl.





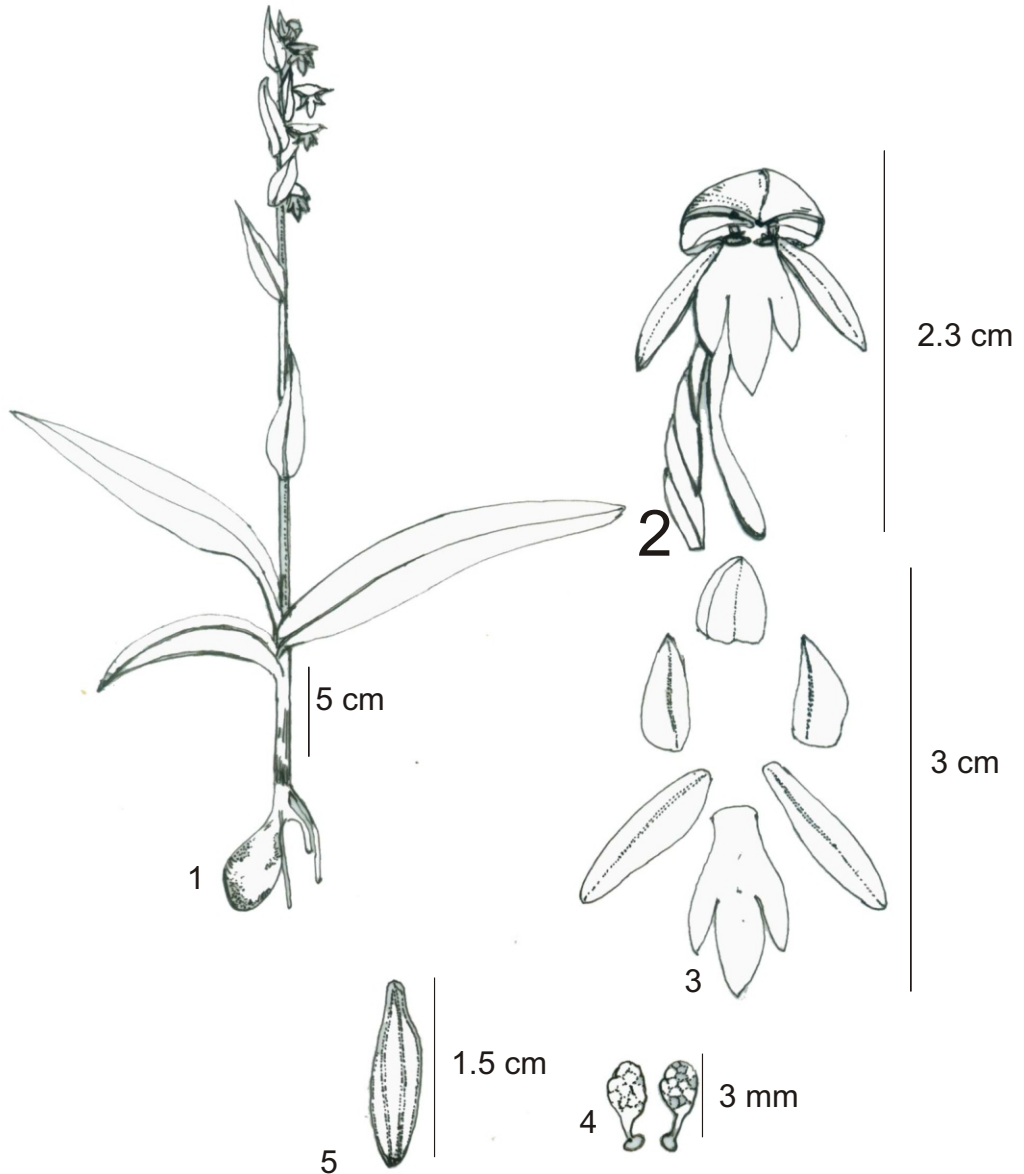
Haritarium

Family Code: 579

Species code: 4 -16D

Naoroji Godrej Centre for Plant Research

Habenaria heyneana Lindl.



1.Habit, 2.Flower, 3.Dissected flower, 4. Pollinia, 5.Capsule.



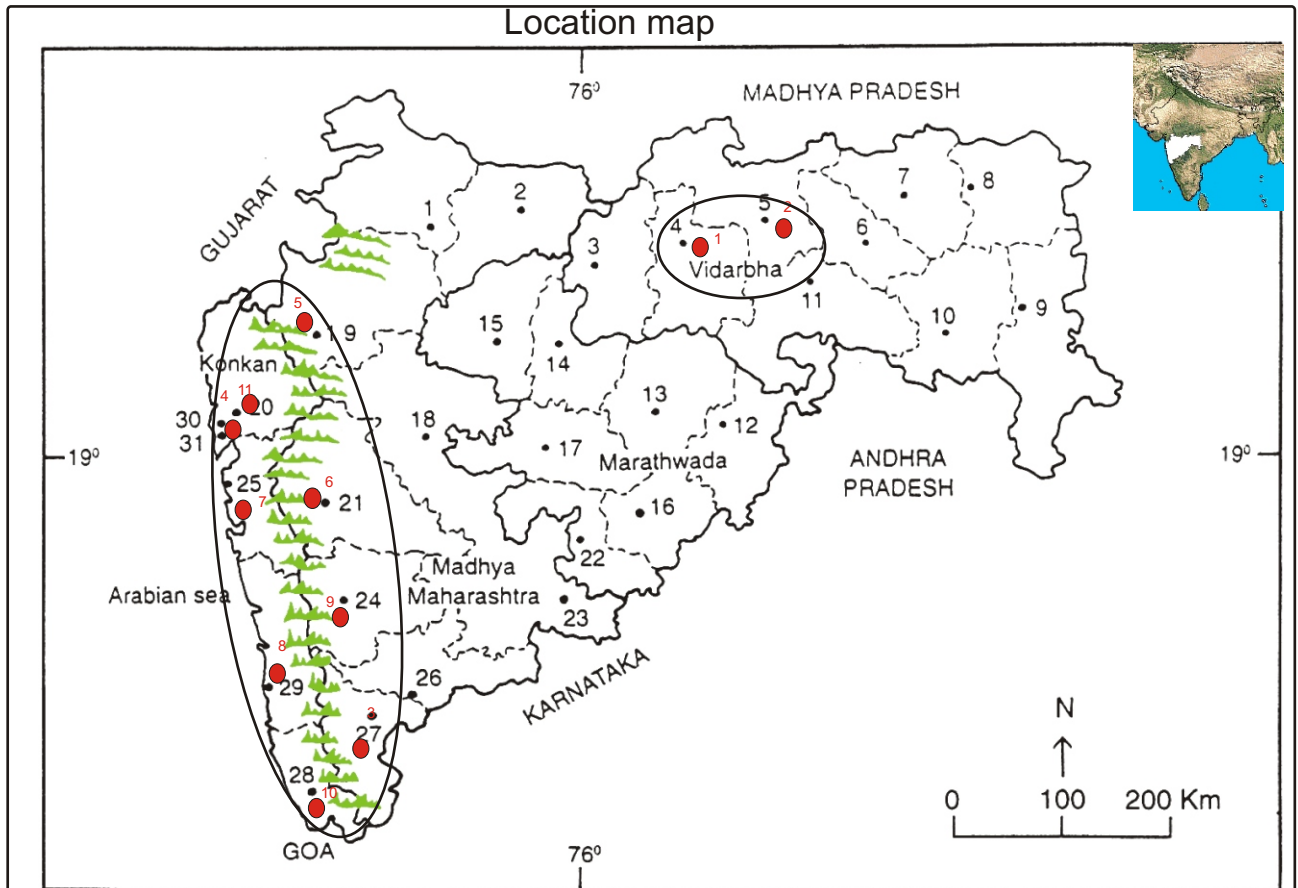
Haritarium

Family Code: 579

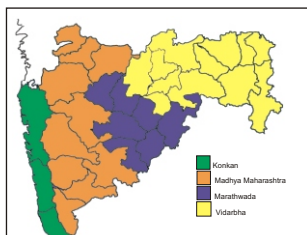
Species code: 4 -16E

Naoroji Godrej Centre for Plant Research

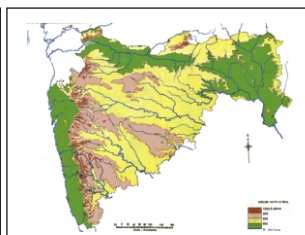
Habenaria heyneana Lindl.



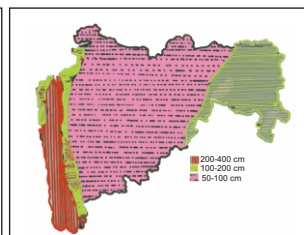
- 1.Dhule 2.Jalgaon 3. Buldhana 4.Akola 5.Amaravati 6.Wardha 7.Nagpur 8. Bhandara 9. Gadchiroli
 10. Chandrapur 11. Yavatmal 12. Nanded 13. Parbhani 14. Jalna 15. Aurangabad 16.Latur
 17. Beed 18. Ahmadnagar 19 Nashik 20. Thane 21. Pune 22. Osmanabad 23. Solapur 24.Satara
 25. Raigad 26.Sangli 27. Kolhapur 28. Sindhudurg 29. Ratnagiri 30.Mumbai 31.Greater Mumbai.



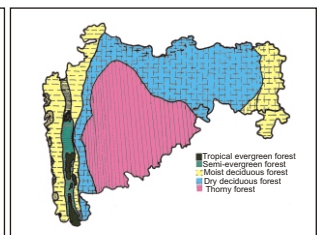
Geographical regions 1



Physical map 2



Rain fall map 3



Forest types 4

Localities- ●

1. Akola, 2. Amaravati, 3. Kolhapur, 4. Mumbai, 5. Nasik, 6. Pune, 7. Raigad,
 8. Ratnagiri 9. Satara, 10. Sindhudurg, 11. Thane.

Geographical distribution in Maharashtra:

Latitude (DMS): Between 21° 53' - 17° 49' N & Longitude (DMS): 72° 58' - 79° 05' E.



Haritarium

Family Code: 579

Species code: 4 -16F

Naoroji Godrej Centre for Plant Research

Habenaria heyneana Lindl.

References:

Blatter, E. & C. McCann.(1932): *J. Bombay nat. Hist. Soc.* 36:21.

Cooke. T (1904): **Flora of Presidency of Bombay**. Vol.3: 225.(rep. Ed.1967).

Hooker, J.D. *et al.*(1890): **The flora of British India**. London. Vol.6: 148.

Santapau H. & Kapadia Z.(1966): **The Orchids of Bombay** 32:15-16 Manager of Publications, Delhi. Pp.15-16.

Sharma B.D., S.Karthikeyan & N.P.Singh(1996): **Flora of Maharashtra: Monocotyledones**, Botanical Survey of India, Calcutta. Pp.38.