



Haritarium

Family Code: 579

Species code: 4 - 9A

Naoroji Godrej Centre for Plant Research

Habenaria panchganiensis Santapau & Kapadia

Botanical name: *Habenaria panchganiensis* Santapau & Kapadia
(=*H. variabilis* Blatt. & McC.)

Family : Orchidaceae

Vernacular name:

Threatened category: Endangered (Mishra & Singh, 2001)

Key characters: Ground orchid; Leaves radical or cauline, not flat on ground, flowers white, petals entire linear-oblong, spatulate or broadly ovate or ovate-oblong; lobes of lip not tailed. Lip 1.5 – 2 times as long as lateral sepals; spur much shorter than or equalling the ovary.

Description: Terrestrial herb; 10-22 cm tall. Tubers 1 or 2, oblong or ellipsoid, the smaller ones generally suborbicular 1-2.5 X 0.8 –1.5 cm. Leaves 3-5, radical or subradical, alternate, clustered at the base, oblong or oblong-lanceolate or elliptical, acute, entire, minutely papillate, 2-8 X 0.8 –2.5 cm. Inflorescence, 2-to 10 flowered, secund or subsecund in dense or lax racemes 4-15 cm long. Peduncle. rigid, terete, bracteate, longitudinally ribbed, 6-10 cm long, about 1-2 mm in diam. Bracts 1-2, rarely several, 1.5-3 X 0.3-1 cm, amplexicaul, oblong, elliptic or oblong-lanceolate, acute. Flowers white, faintly fragrant, pedicellate, bracteate. Bracts 13 X 4 mm, 7 mm broad on spreading, oblong-ovate in outline, the basal half oblong-orbicular, the upper one strongly acuminate. Sepals unequal, white, acute, 3-nerved; lateral ones 10-14 X 5-6 mm, obliquely ovate-lanceolate, subflacate, spreading, slightly decurved downwards; dorsal sepal ovate, concave. Petals white, obliquely ovate, 10-12 X 4-6 mm, the upper one gradually tapering to an acute apex, 3 nerved. Lip 15-22 X 14-24 mm, white, broadly ovate in outline, 3-lobed about or a little beyond the middle, glabrous; lateral lobes 6-9 mm broad, obliquely ovate or cuneate-oblong, truncate, entire, denticulate or crenulate, faintly 5-7 nerved; midlobe 8-10 X 3-5 mm, slightly longer than the lateral lobes or subequal, broadly or narrowly lanceolate, subacute to obtuse, entire, 5-nerved. Spur 8-11 mm long, about 1.5 mm in diam. Reaching to about $\frac{3}{4}$ the length of the ovary, straight or slightly curved, subclavate at the rounded apex, white greenish below. Column 4-5 X 2 mm, yellowish –green, oblong, curved behind, straight in front, apiculate on top, with a central longitudinal groove running all along the back. Anther cells short; pollinia –2-2.5 mm long, oblong suboblique, caudicle about as long or slightly shorter, and gland comparatively large, exposed, discoid-oblong. Stigmatic processes short, yellowish-green. Ovary 13-17 mm long, curved, strongly 6-ribbed, narrowly oblong. Capsule 2.5 cm long, about 5-7 mm in diam. Spindle-shaped, beak a 3-5 mm long, and with 6 strong ribs.

Flowering and fruiting: July – Sep.

Distribution: Maharashtra - Western Ghats.

Localities: Ratnagiri -Gothane plateau, Satara – Kas, Mahabaleshwar, Panchagani, Sindhudurg- Amboli Ghat, Pune- Varandha Ghat.

Ecology: Occasionally found on open plateaux of high altitude regions between 900-1200m above sea level. Wherever it is present, it occurs in patches large numbers. The species is also seen growing in grass lands frequently visited by village cattle .

Association: No specific plant association is observed.



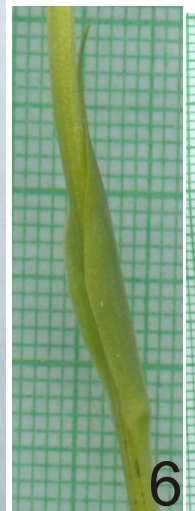
Haritarium

Family Code: 579

Species code: 4 - 9B

Naoroji Godrej Centre for Plant Research

***Habenaria panchganiensis* Santapau & Kapadia**



1.Habitat,2.Flower,3.Inflorescence, 4. Dissected flower
5.Habit 6.bract 7. Leaf-ventral view, 8.Leaf-dorsal view.



Haritarium

Family Code: 579

Species code: 4 - 9C

Naoroji Godrej Centre for Plant Research

***Habenaria panchganiensis* Santapau & Kapadia**





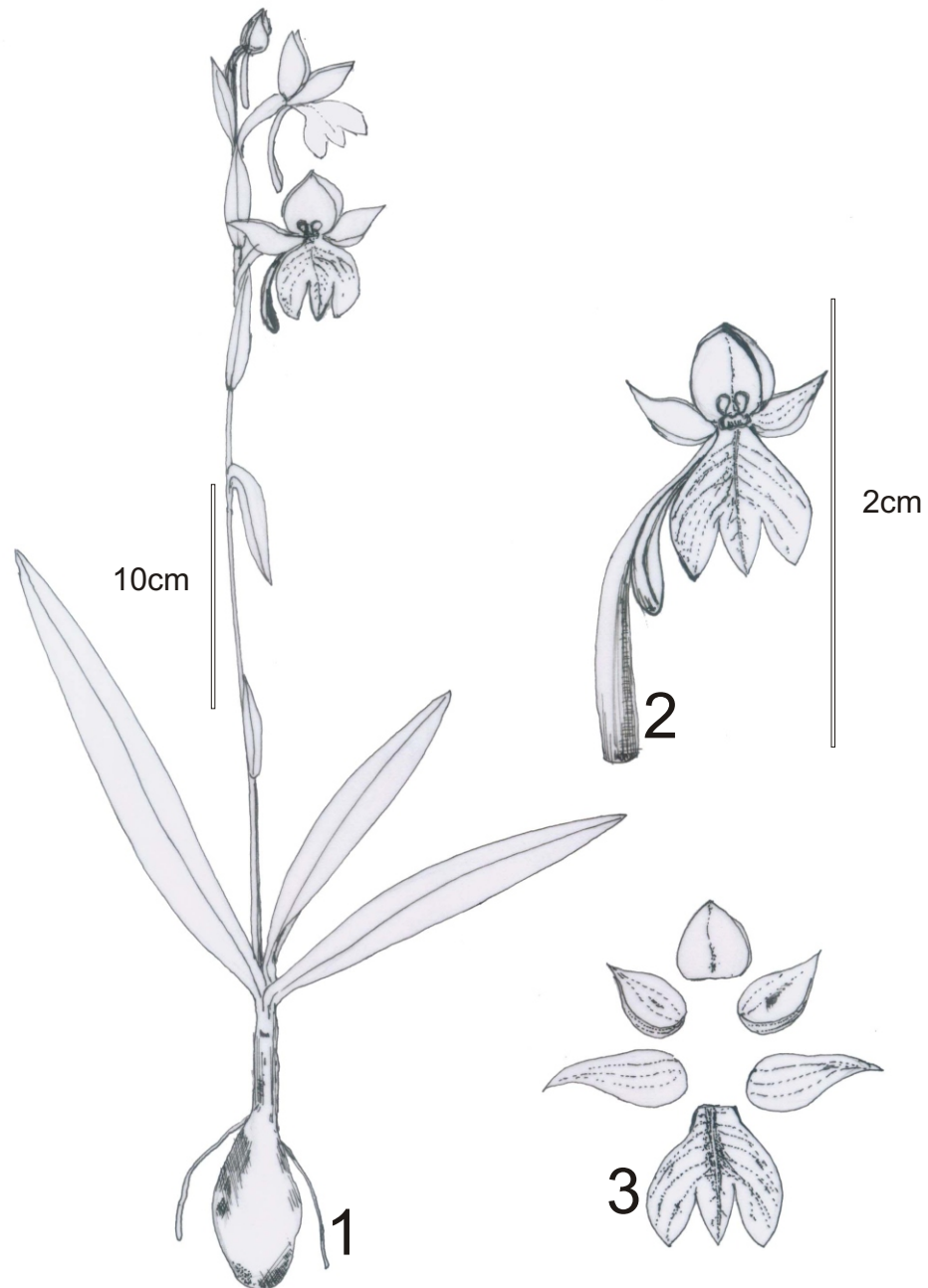
Haritarium

Family Code: 579

Species code: 4 - 9D

Naoroji Godrej Centre for Plant Research

Habenaria panchganiensis Santapau & Kapadia



1.Habit, 2.Flower, 3.Dissected flower



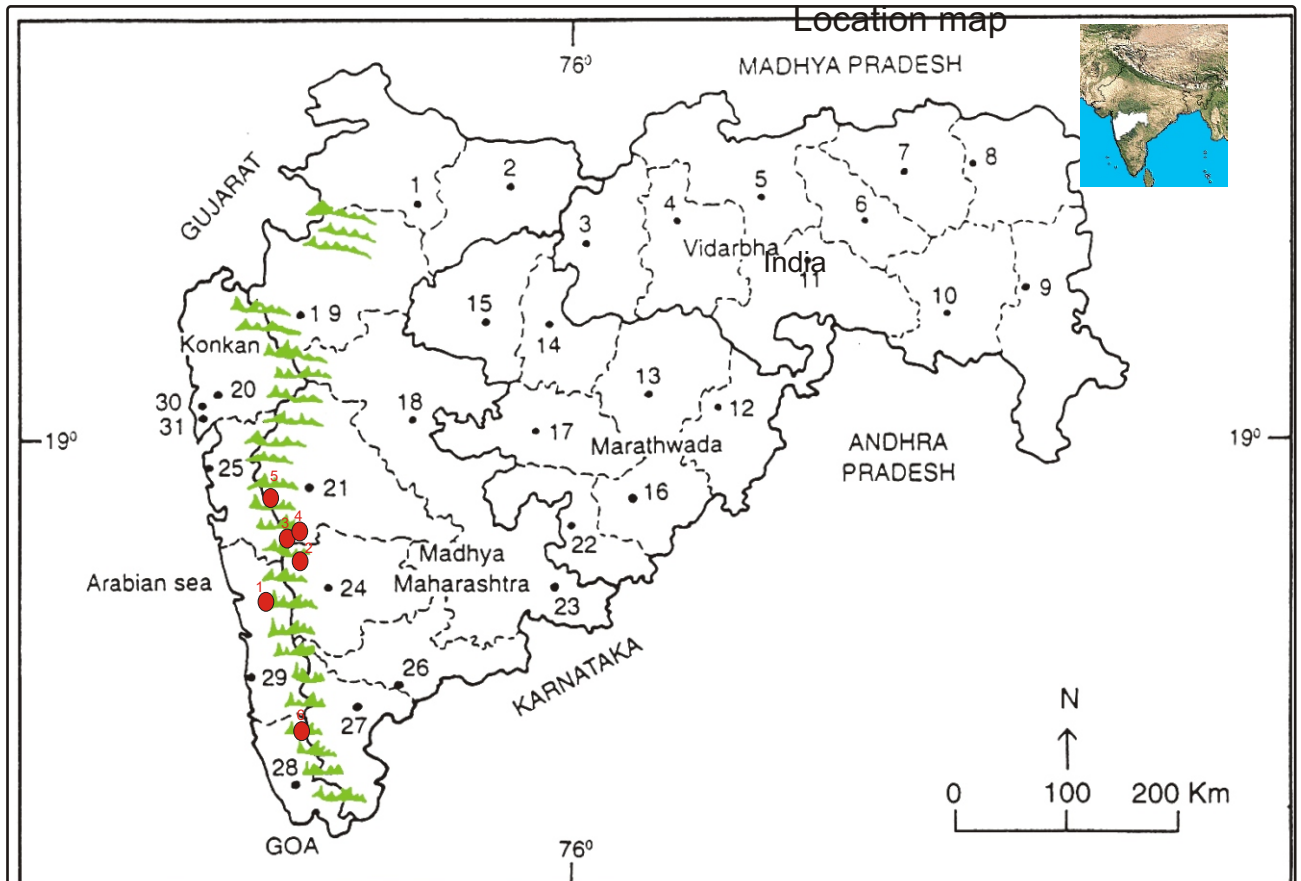
Haritarium

Family Code: 579

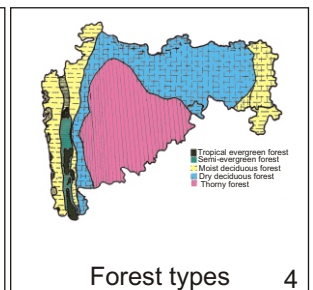
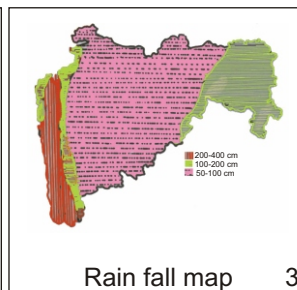
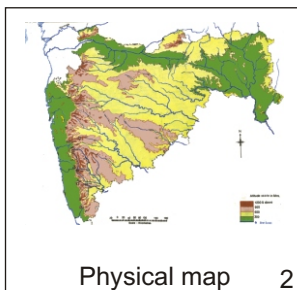
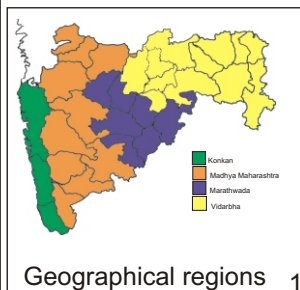
Species code: 4 - 9E

Naoroji Godrej Centre for Plant Research

Habenaria panchganiensis Santapau & Kapadia



1.Dhule 2.Jalgaon 3. Buldhana 4.Akola 5.Amaravati 6.Wardha 7.Nagpur 8. Bhandara 9. Gadchiroli
10. Chandrapur 11. Yavatmal 12. Nanded 13. Parbhani 14. Jalna 15. Aurangabad 16.Latur
17. Beed 18. Ahmadnagar 19 Nashik 20. Thane 21. Pune 22. Osmanabad 23. Solapur 24.Satara
25. Raigad 26. Sangli 27. Kolhapur 28. Sindhudurg 29. Ratnagiri 30.Mumbai 31.Greater Mumbai.



Localities- ●

A.Ratnagiri(1-Gothane plateau), B. Satara (2-Kas,3-Mahabaleswar, 4-Panchgani), C. Pune (5. Varandha ghat), D. Sindhudurg (6-Amboli ghat).

Geographical distribution in Maharashtra:

Latitude (DMS): Between 17^o 49' -16^o 58' N & Longitude (DMS): 72^o 58' -73^o.05' E.



Haritarium

Family Code: 579

Species code: 4 - 9F

Naoroji Godrej Centre for Plant Research

Habenaria panchganiensis Santapau & Kapadia

References:

Ahmedullah, M & M.P. Nayar (1987): **Endemic Plants of the Indian Region**
B.S.I. Calcutta, vol.1:249.

Blatter, E. & C.McCann(1932): Revision of the Flora of the Bombay Presidency,
in *J. Bombay nat. Hist. Soc.*, **36**:19

Despande, S.D., B.D.Sharma & M.P.Nayar (1995) **Flora Mahabaleshwar and adjoining, Maharashtra**, B.S.I. Calcutta, Vol.2: 576.

Karthikeyan, S., S.K. Jain, M.P. Nair & M. Sanjappa(1989): **Florae Indicae Enumeratio – Monocotyledonae**, B.S.I., Calcutta:144.

Kulkarni, B. G. (1988) **Flora of Sindhudurg**, B.S.I. Calcutta: 434.

Laxminarasimhan P.(1996)in Sharma, S. Karthikeyan & N.P.Singh (eds.)**Flora of Maharashtra state**, *Monocot.* B.S.I., Calcutta: 42

Mistry, M.K. (1986): **Flora of Ratnagiri district**, 2 .Ph.D. Thesis (*ined.*): 657.

Nayar M.P.& A.R.K. Sastry (1990): (eds), **Red Data Book on Indian Plants.**,
B.S.I. Calcutta Vol.3:198.

Raghavan, R. S. and N.P. Singh (1983): in S.K. Jain & A.R.K. Sastry (eds.)
Plant. Cons. Bull., Vol. **3**: 11.

Santapau H. & Z. Kapadia (1957): *Habenaria panchganiensis*- New name for a
Bombay orchid. *J. Bombay Nat. Hist. Soc.* 54: 478.

Singh, N.P. & R.S.Raghavan (1986). Materials for plant conservation in Western
India, *J. Econ. Tax. Bot.* 8(1):29-38.

Yadav S.R.(1997) Endemic plants of peninsular India with special reference to
Maharashtra, in Pokle D.S., S.P. Kanir & V.N. Naik (eds.) *Proceedings, VII
IAAT Annual Meet and National Conference*, Aurangabad.:45