



Haritarium

Family Code: 585

Species code: 1 - 1A

Naoroji Godrej Centre for Plant Research

Hubbardia heptaneuron Bor

Botanical name: *Hubbardia haptaneuron* Bor

Vernacular name: -

Family : Gramineae

Threatened category: Critically endangered. Rediscovered after 100 years.

Key characters: Inflorescence a effuse, panicle open, axillary, spikelets 2 flowered, second lemma not awned, glumes persistent, unequal in size, stamens 3.

Description: Annual herbs, culms delicate, trailing below or pendulous; culms slender, rooting at nodes. Leaves long, elliptic to oblong-elliptic, rough on the margins, with short sheathing base without ligule, translucent, pale green. 2-3 cm. Panicles slender, numerous from nodes; spikelets all alike, two flowered, 2-3 mm long, with 2 glumes ellipsoid, oblong-acute and marked with 5-7 conspicuous longitudinal veins. Glumes membranous, Grains brown, spindle-shaped, upto 1.25 mm long.

Flowering and fruiting: September- March.

Distribution: India – Maharashtra- Kolhapur.

Localities: Kolhapur –Tilari ghat.

Ecology: On moist rocks in shady places at an altitude ranging between 400-500 m. above sea level.

Association: No specific plant association is observed.



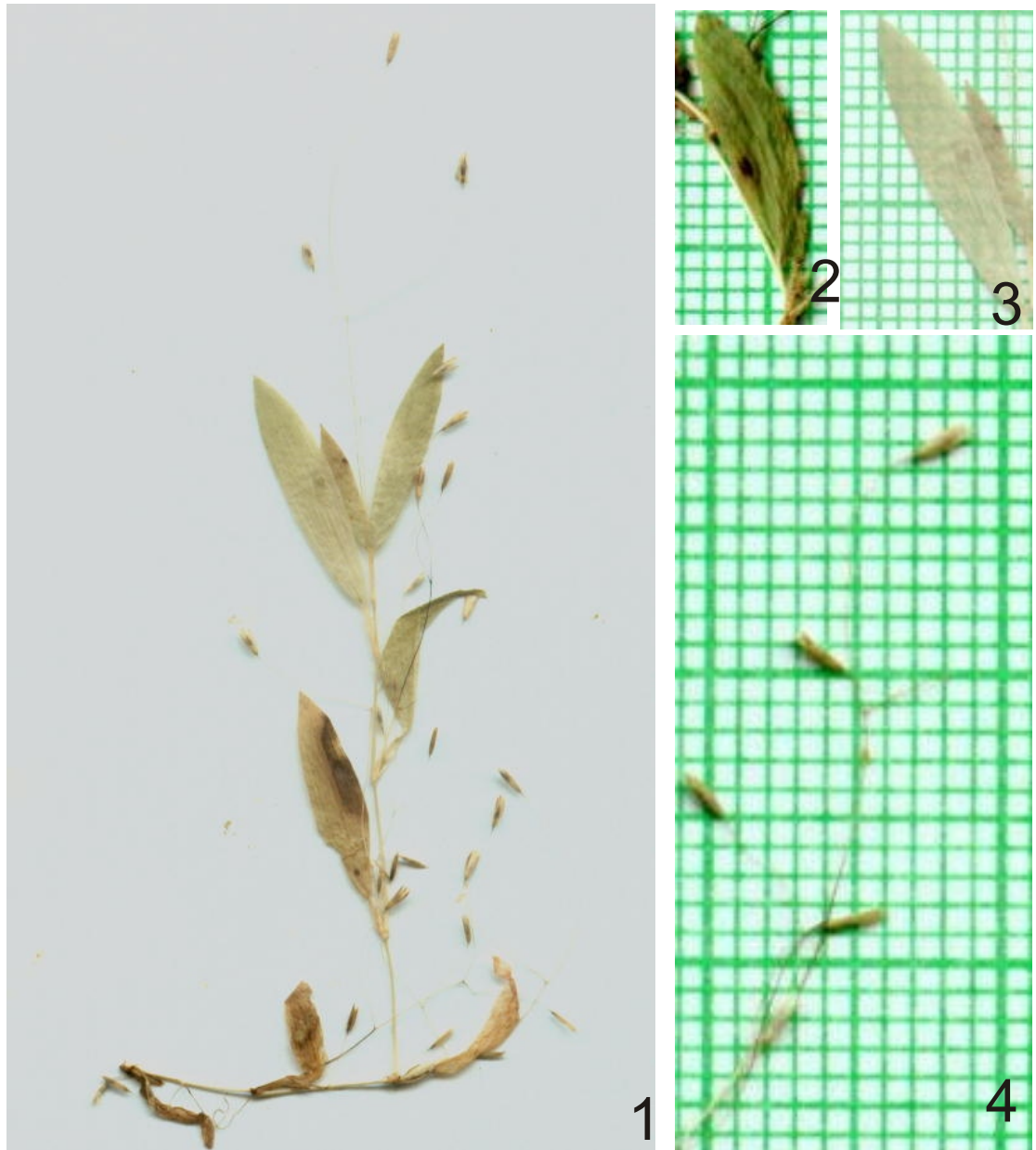
Haritarium

Family Code: 585

Species code: 1 - 1B

Naoroji Godrej Centre for Plant Research

Hubbardia heptaneuron Bor



1.Habit 2. Leaf: dorsal view, 3. Leaf- ventral view, 4. Panicle.



Haritarium

Family Code: 585

Species code: 1 - 1C

Naoroji Godrej Centre for Plant Research

Hubbardia heptaneuron Bor





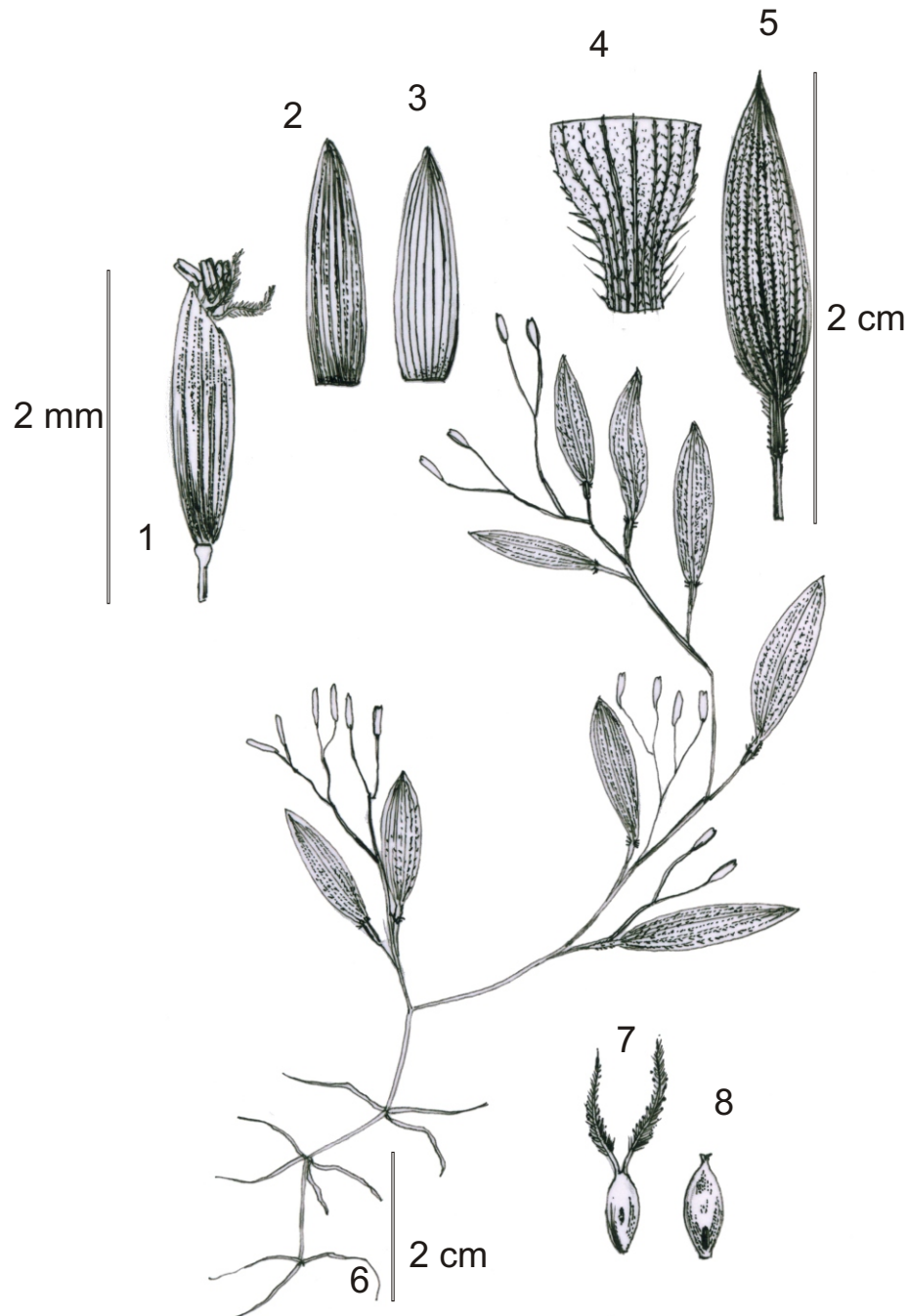
Haritarium

Family Code: 585

Species code: 1 - 1D

Naoroji Godrej Centre for Plant Research

Hubbardia heptaneuron Bor



1. Spikelet 2. Glume, 3. Lemma, 4. Collar, 5. Leaf, 6. Habit, 7. Ovary, 8. Adaxial view of caryopsis.



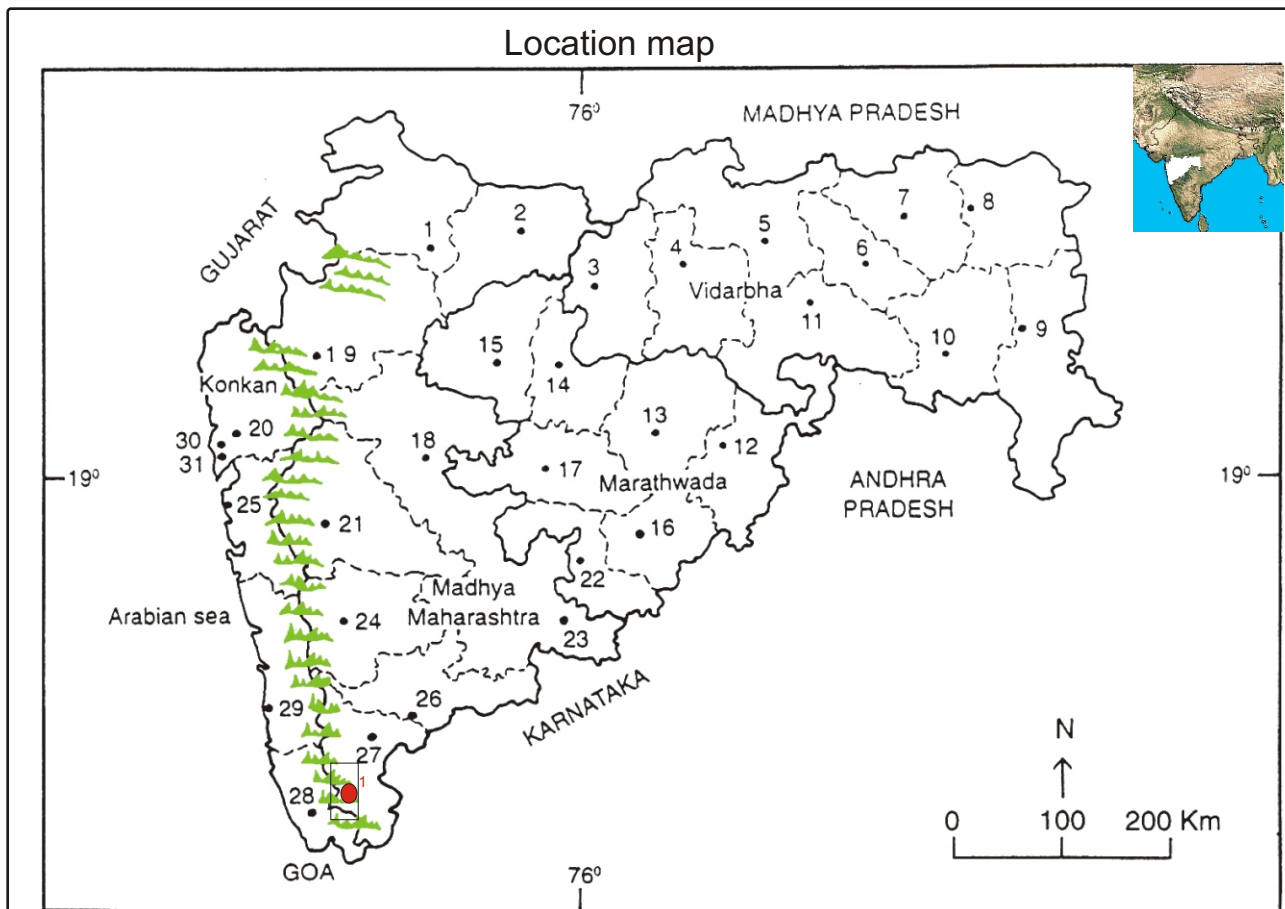
Haritarium

Family Code: 585

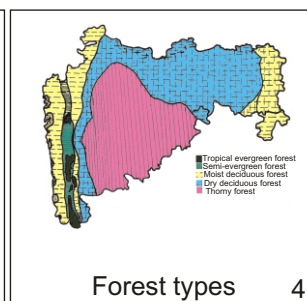
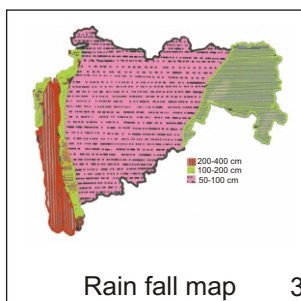
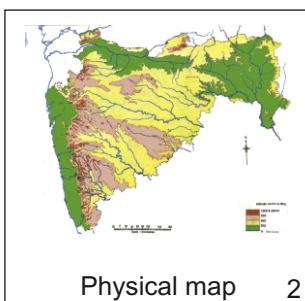
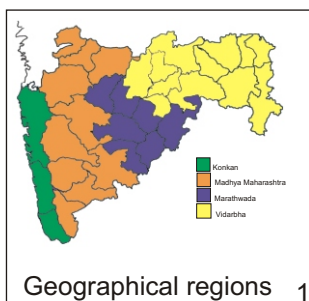
Species code: 1 - 1E

Naoroji Godrej Centre for Plant Research

Hubbardia heptaneuron Bor



- 1.Dhule 2.Jalgaon 3. Buldhana 4.Akola 5.Amaravati 6.Wardha 7.Nagpur 8. Bhandara 9. Gadchiroli
 10. Chandrapur 11. Yavatmal 12. Nanded 13. Parbhani 14. Jalna 15. Aurangabad 16.Latur
 17. Beed 18. Ahmadnagar 19 Nashik 20. Thane 21. Pune 22. Osmanabad 23. Solapur 24.Satara
 25. Raigad 26.Sangli 27. Kolhapur 28. Sindhudurg 29. Ratnagiri 30.Mumbai 31.Greater Mumbai.



Localities- ●

A.Kolhapur- Tilari Ghat.

Geographical distribution in Maharashtra:

Latitude (DMS): 17° 43' 0N & Longitude (DMS): 73° 32' E.



Haritarium

Family Code: 585

Species code: 1 - 1F

Naoroji Godrej Centre for Plant Research

Hubbardia heptaneuron Bor

References:

Ahmedullah, M & M.P. Nayar (1987): **Endemic Plants of the Indian Region** B.S.I. Calcutta, vol.1:227.

Karythikeyan, S. 1983. Endemic grasses of India with an emphasis on rare, indeterminate and extinct species, in S.K. Jain & R.R. Rao (eds.), **An assessment of threatened plants of India**, B .S. I., Calcutta. pp.243.

Mishra D.K. & N.P. Singh (2001) :Endemic and Threatened Flowering Plants of Maharashtra, B.S.I., Calcutta: 226.

Nayar, M.P. & A.R.K. Sastry (1987): (eds). Red Data Book of Indian Plants; Vol.1, B.S.I. Calcutta:303

Raghavan, R.S.& Singh(1984): An inventory of endemic and vulnerable species of Western India deserving conservation, in *J.Econ. Tax. Bot.* 5(1): 164.

Yadav, S.R.(1997): Endemic plants of peninsular India with special reference to Maharashtra, in Pokle D.S., S.P. Kanir & V.N. Naik (eds.) **Proceedings, VII IAAT Annual Meet and National Conference**, Aurangabad:46.

Yadav, S.R. & M.M. Sardesai (2002) Flora of Kolhapur district. Shivaji University, Kolhapur. Pp-679.