



Haritarium

Family Code: 1

Species code: 4 - 3A

Naoroji Godrej Centre for Plant Research

Hygrophila pinnatifida (Dalzell) Sreem.

Botanical name: *Hygrophila pinnatifida* (Dalzell) Sreem .

(=*Nomaphila pinnatifida* Dalz., = *Adenosma pinnatifidum*
(Dalz.) T. And., = *Cardanthera pinnatifidum* (Dalz.) Bth. Ex C.B.Cl.

Vernacular name: Baphali

Family : Acanthaceae

Key characters: Erect herb, Leaves large, dissected pinnatifid, flowers axillary whorled, Corolla 2-lipped, Stamens 4.

Description: Erect herbs, 30-60 cm, aquatic, slender, glandular, glandular-pubescent; stems obtusely tetragonous, Leaves 5-10 X 1.0-2.5 cm, oblong-lanceolate, deeply pinnatifid, glandular pubescent, entire serrulate, apex subobtusely. Flower purple-yellow, solitary in opposite axils, apex subobtusely. Flower purple-yellow, solitary in pointed glabrous.

Flowering and fruiting: January- May.

Distribution: India: Endemic to India.

Reported Localities: Kolhapur, Raigad, Ratnagiri, and Sindhudurg.

Ecology: Aquatic plant. Occasionally found growing in flowing streams, more specifically in Konkan region. Altitude ranges between 300-900m above sea level.

Association: No specific plant association is observed.



Haritarium

Family Code: 1

Species code: 4 - 3B

Naoroji Godrej Centre for Plant Research

***Hygrophila pinnatifida* (Dalzell) Sreem.**



1.Habitat, 2.& 4.Habit, 3. & 6. Single flower, 5. Dissected flower,7.Anthers & Gynoecium, 8. Gynoecium,9. Anthers, 10. Pod, 11.Mature pod showing seeds, 12. Leaves- Dorsal sides,13. Leaves - ventral side.



Haritarium

Family Code: 1

Species code: 4 - 3C

Naoroji Godrej Centre for Plant Research

***Hygrophila pinnatifida* (Dalzell) Sreem.**





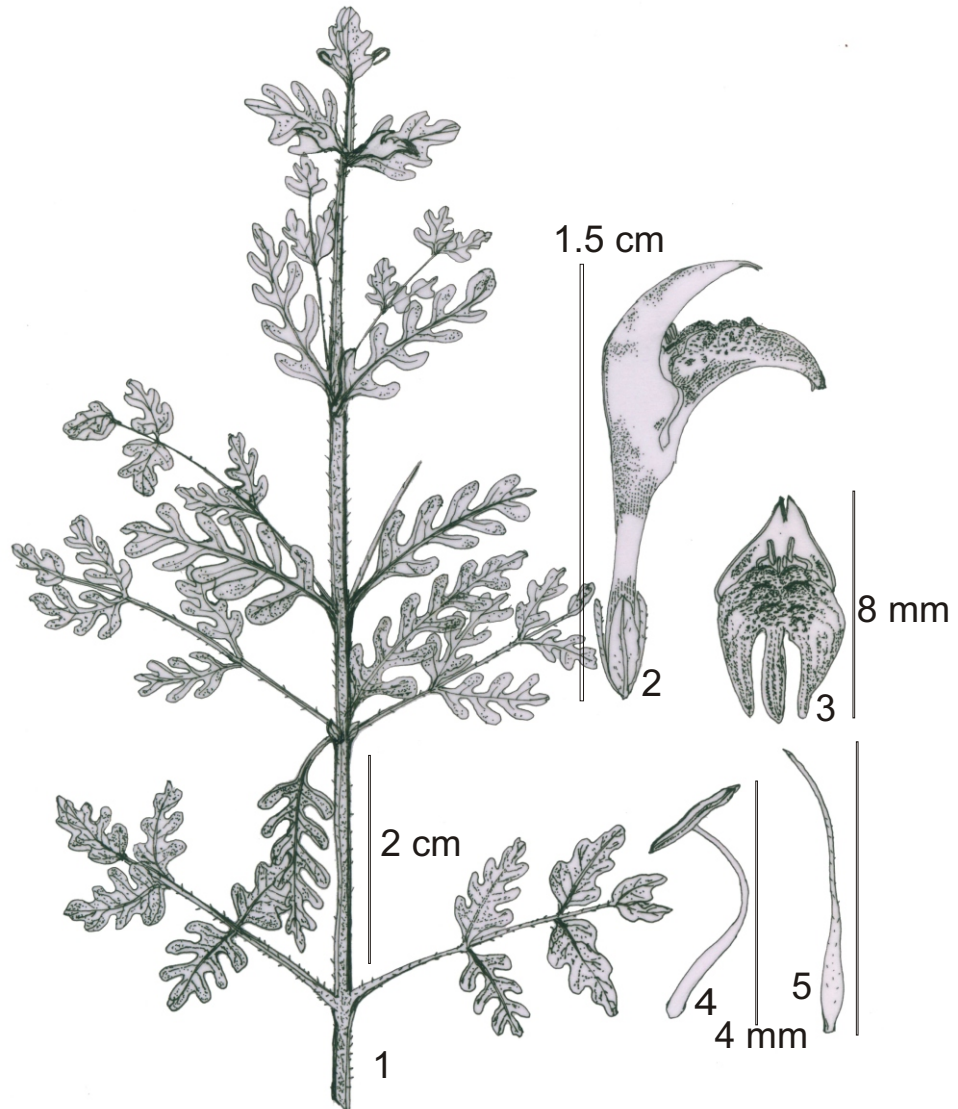
Haritarium

Family Code: 1

Species code: 4 - 3D

Naoroji Godrej Centre for Plant Research

***Hygrophila pinnatifida* (Dalzell) Sreem.**



1.Habit, 2.& 3.Flower, 3. Anther, 4. Gynoecium



Haritarium

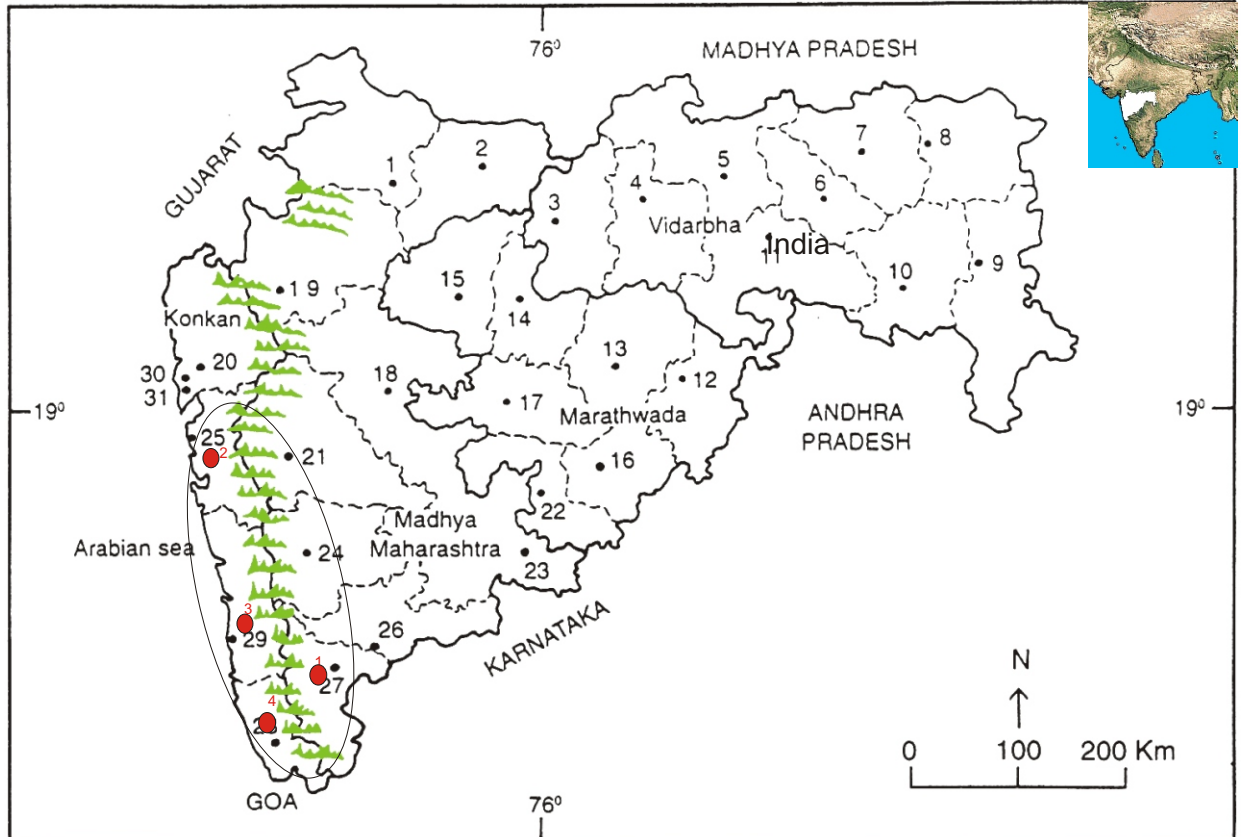
Family Code: 1

Species code: 4 - 3E

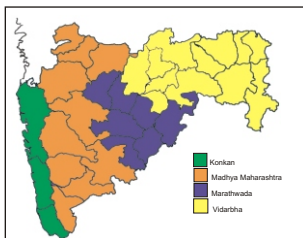
Naoroji Godrej Centre for Plant Research

Hygrophila pinnatifida (Dalzell) Sreem.

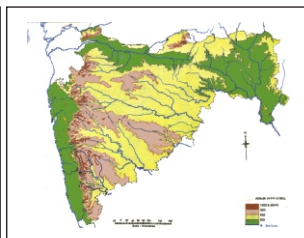
Location map



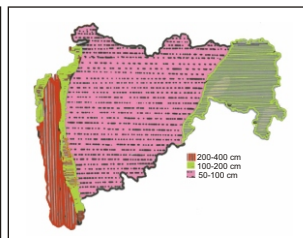
1. Dhule 2. Jalgaon 3. Buldhana 4. Akola 5. Amaravati 6. Wardha 7. Nagpur 8. Bhandara 9. Gadchiroli
 10. Chandrapur 11. Yavatmal 12. Nanded 13. Parbhani 14. Jalna 15. Aurangabad 16. Latur
 17. Beed 18. Ahmadnagar 19. Nashik 20. Thane 21. Pune 22. Osmanabad 23. Solapur 24. Satara
 25. Raigad 26. Sangli 27. Kolhapur 28. Sindhudurg 29. Ratnagiri 30. Mumbai 31. Greater Mumbai.



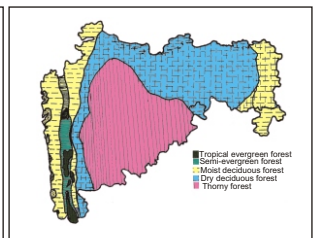
Geographical regions 1



Physical map 2



Rain fall map 3



Forest types 4

Localities- ●

1. Kolhapur, 2. Raigad, 3. Ratnagiri, 4. Sindhudurg.

Geographical distribution in Maharashtra:

Latitude (DMS): Between 18° 38' - 17° 49' & Longitude (DMS): 72° 58' - 74° 13' E.



Haritarium

Family Code: 1

Species code: 4 - 3F

Naoroji Godrej Centre for Plant Research

Hygrophila pinnatifida (Dalzell) Sreem.

References:

- Cooke. T (1904): **Flora of Presidency of Bombay**. Vol.2: 423.(rep. Ed.1967).
- Gaikwad S.P. & S.R. Yadav(2004): in T. Pullaiah (ed.)Endemic flowering plant species of Maharashtra and their possible utilization; **Biodiversity in India**, Regancy publications, New Delhi:46.
- Hooker, J.D. *et al.*(1885):**The flora of British India**. London. Vol.4: 491.
- Santapau, H. (1952) : The Acanthaceae of Bombay.*Univ. Bombay Bot. Mem.*2: 13.
- Tetali, *et al.* (2000): **Endemic Plants of India (A Status Report of Maharashtra State)**. Naoroji Godrej Centre for Plant Research, Shirwal: 41.