



**Haritarium**

Family Code: 50

Species code: 1 - 7A

**Naoroji Godrej Centre for Plant Research**

**Impatiens dalzellii** Hook.f. & Thomson

**Botanical name:** *Impatiens dalzellii* Hook.f. & Thomson

**Vernacular name:** -

**Family :** Balsaminaceae

**Threatened category:** Low risk (Gaikwad & Yadav, 2004)

**Key characters:** Annuals, herbs, no rooting at nodes, leaves cauline, flowers yellow

**Description:** Succulent herbs, 20-60cm long, annuals, stem reddish. Leaves 3-8 X 1.0-2.0 cm, opposite, sessile or subsessile, ovate, lanceolate, margins serrate, hairy on nerves above, glabrous and pale beneath, cordate or subcordate or acute at base. Flowers 0.9 cm across, in fascicles (upto 6 in each fascicle); spurs minute 0.4 cm long, tinged with red. Capsule 1.0 X 0.7 cm 5-ribbed, ribs wavy. Seeds black polished, oblong.

**Flowering and fruiting:** August – October.

**Distribution:** India – Endemic to Western Ghats

**Reported Localities:** Ahmednagar, Nasik, Raigad, Pune, Satara districts

**Ecology:** Occasionally seen in small groups along the hedges and in rock crevices of forests. Restricted to gentle slopes of higher Ghats between 900-1200m above sea level.

**Association:** No plant association is observed.



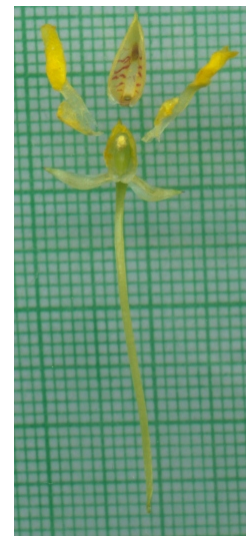
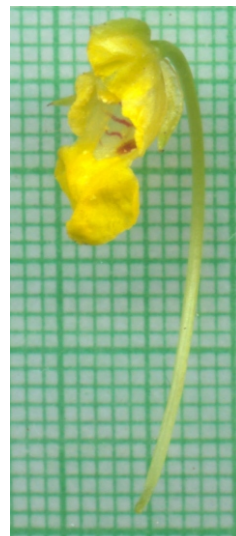
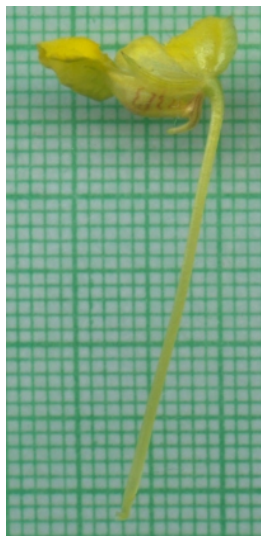
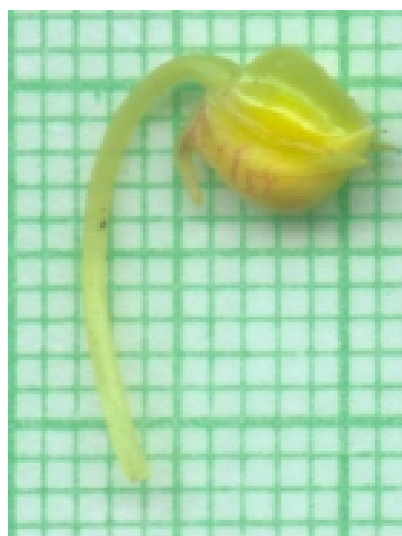
**Haritarium**

Family Code: 50

Species code: 1 - 7B

**Naoroji Godrej Centre for Plant Research**

***Impatiens dalzellii* Hook.f. & Thomson**



1.Habit,2.Flower,3.Dissected Flower,4.Inflorescence  
5.Leaf-ventral view, 6.Leaf-dorsal view, 7.Corolla, 8.Tuber





**Haritarium**

Family Code: 50

Species code: 1 - 7C

**Naoroji Godrej Centre for Plant Research**

***Impatiens dalzellii* Hook.f. & Thomson**





**Haritarium**

Family Code: 50

Species code: 1 - 7D

**Naoroji Godrej Centre for Plant Research**

***Impatiens dalzellii* Hook.f. & Thomson**



1. Habit, 2. Leaf, 3. Flower- side view, 4. Flower- frontal view, 5. Petal, 6. Anther, 7. Corolla, 8.



# Haritarium

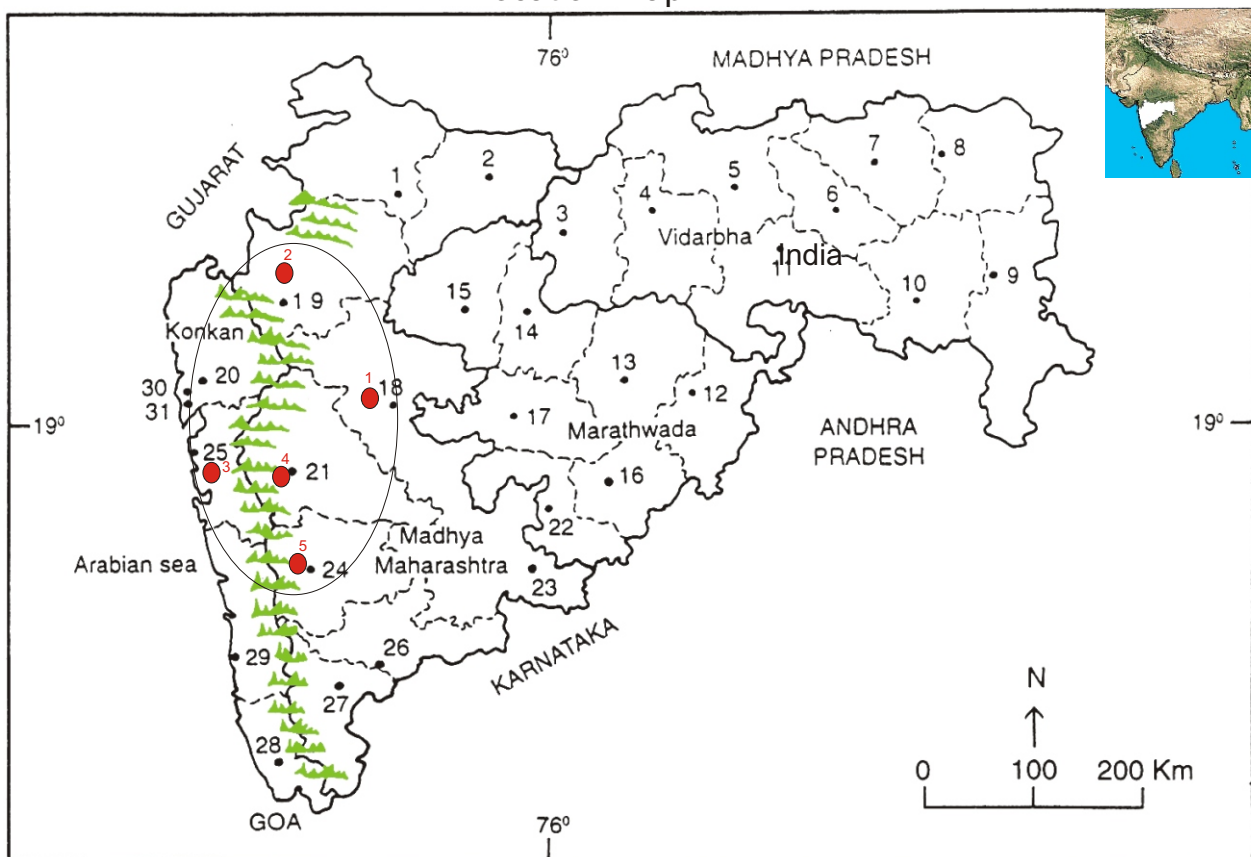
Family Code: 50

Species code: 1 - 7E

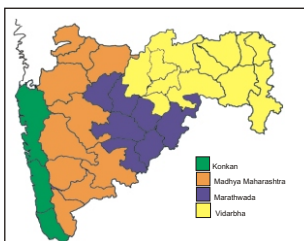
## Naoroji Godrej Centre for Plant Research

*Impatiens dalzellii* Hook.f. & Thomson

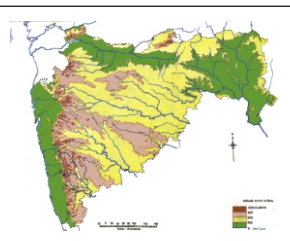
Location map



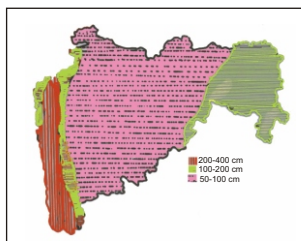
1.Dhule 2.Jalgaon 3. Buldhana 4.Akola 5.Amaravati 6.Wardha 7.Nagpur 8. Bhandara 9. Gadchiroli  
10. Chandrapur 11. Yavatmal 12. Nanded 13. Parbhani 14. Jalna 15. Aurangabad 16.Latur  
17. Beed 18. Ahmadnagar 19 Nashik 20. Thane 21. Pune 22. Osmanabad 23. Solapur 24.Satara  
25. Raigad 26. Sangli 27. Kolhapur 28. Sindhudurg 29. Ratnagiri 30.Mumbai 31.Greater Mumbai.



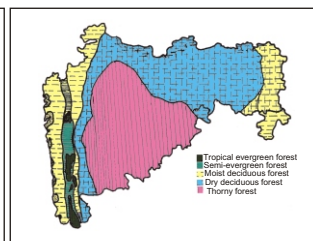
Geographical regions 1



Physical map 2



Rain fall map 3



Forest types 4

Distribution- ●

1. Ahmednagar, 2. Nasik, 3. Raigad, 4. Pune, 5. Satara

Geographical distribution in Maharashtra:

Latitude (DMS): 19° 58' -16° 95' N & Longitude (DMS): 72° 6' -74° 4' E.





**Haritarium**

Family Code: 50

Species code: 1 - 7F

**Naoroji Godrej Centre for Plant Research**

**Impatiens dalzellii** Hook.f. & Thomson

**References:**

Cooke. T (1904): **Flora of Presidency of Bombay**. Vol.1: 183.(rep. Ed.1967)

Hooker, J.D. *et al.* (1890): **The flora of British India**. London. Vol.1: 449.

Singh N.P. & S. Karthikeyan (2000):(eds), **Flora of Maharashtra state, Dicotyledones**. Vol. 1: . B.S.I., Calcutta:453.

Tetali, *et al.* (2000): **Endemic Plants of India ( A Status Report of Maharashtra State)**. Naoroji Godrej Centre for Plant Research, Shirwal: 53.