



Haritarium

Family Code: 343

Species code: 29 - 14A

Naoroji Godrej Centre for Plant Research

Jasminum malabaricum Wight

Botanical name: *Jasminum malabaricum* Wight

Vernacular name: Kusar

Family : Oleaceae.

Status: Endemic

Key characters: Flowers mauve. Calyx 4-partite, the two opposite outer sepals much larger than the inner; Corolla lobes imbricate in bud, Stamens 2 only perfect, Seeds glabrous.

Description: Shrubs; Stems climbing. Leaves 7 X 5-6 cm, broadly ovate, acuminate at apex, rounded or cordate at base. Flowers white, bracteate, in trichotomous, many flowered, terminal cymes. Berries c 1 X 0.6 cm, ovoid, purplish-black.

Flowering and fruiting: March – June.

Distribution: India: Maharashtra- Ahmednagar, Akola, Bombay, Kolhapur, Nasik, Pune, Raigad, Ratnagiri, Satara, Thane district.

Reported Localities: Satara.

Ecology: Common in moist deciduous forests.

Association: *Carissa congesta*, *Lantana*, *Dioscoria* etc.



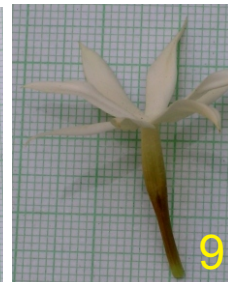
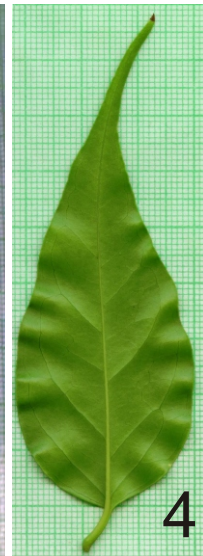
Haritarium

Family Code: 343

Species code: 29 - 14B

Naoroji Godrej Centre for Plant Research

Jasminum malabaricum Wight



1. Habit, 2. Flower, 3. Inflorescence, 4. Leaf - Dorsal view, 5. Leaf - Ventral view, 6.-9. Flower variation



Haritarium

Family Code: 343

Species code: 29 - 14C

Naoroji Godrej Centre for Plant Research

Jasminum malabaricum Wight





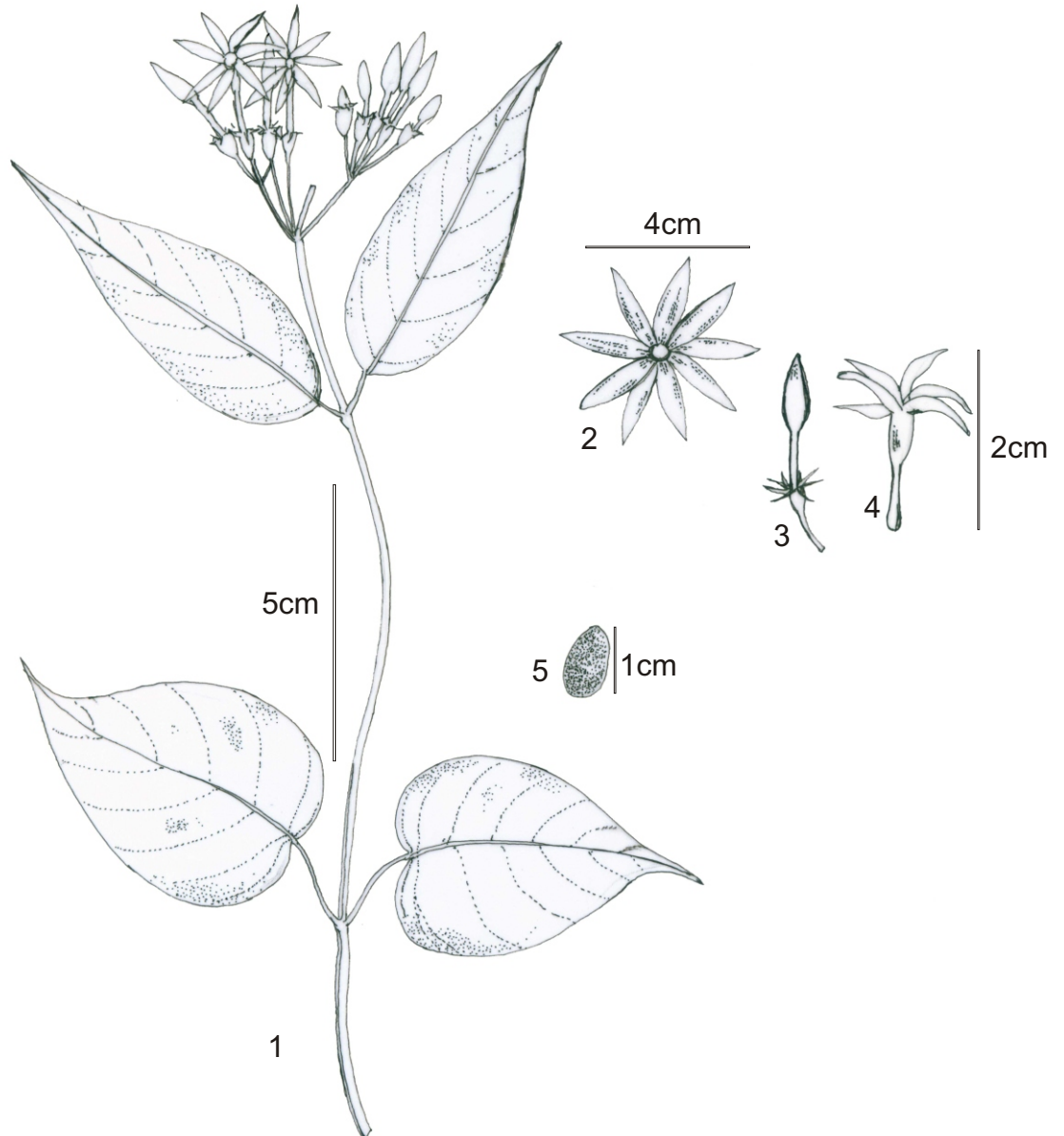
Haritarium

Family Code: 343

Species code: 29 - 14D

Naoroji Godrej Centre for Plant Research

Jasminum malabaricum Wight



1.Habit, 2.&4. Flower, 3. Bud,5.Seed



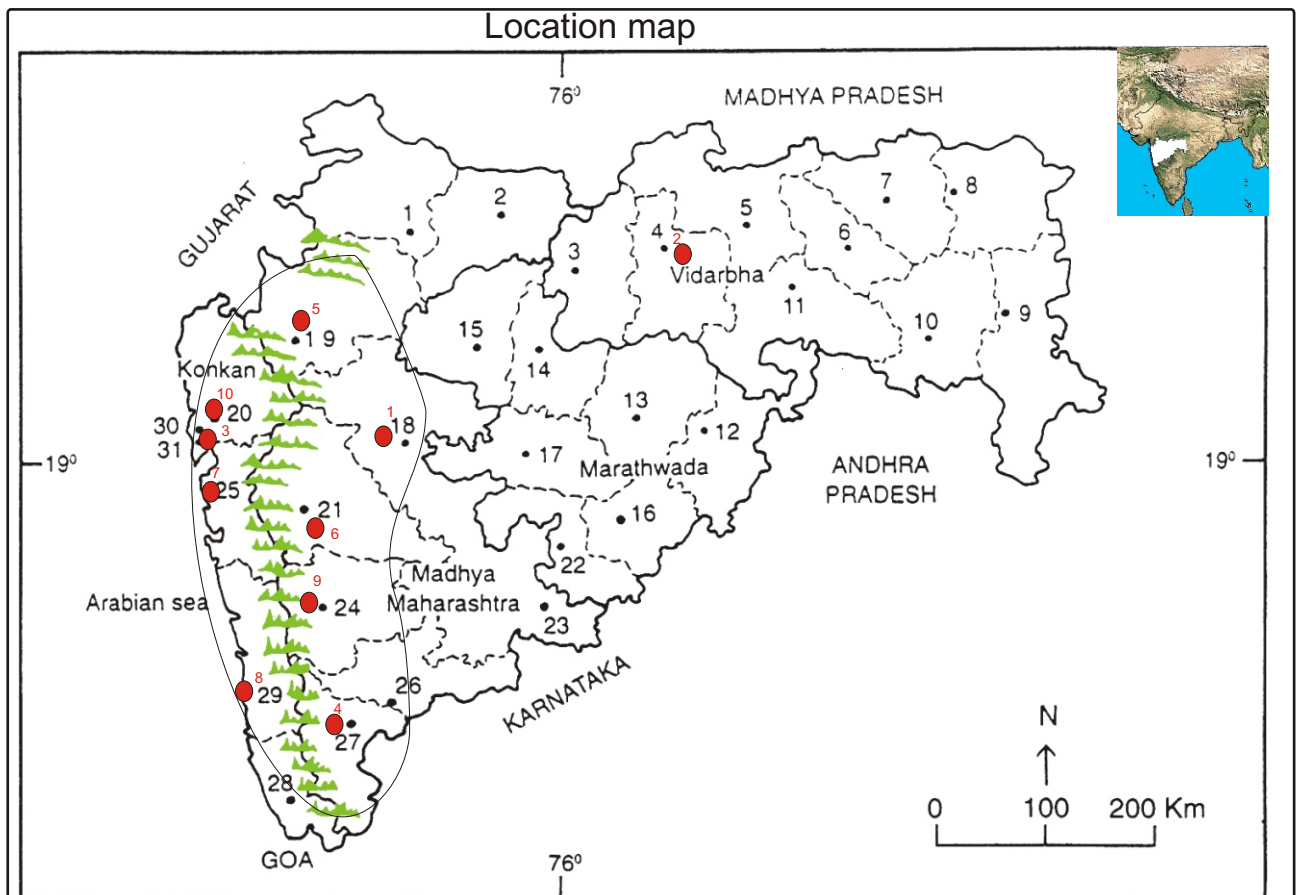
Haritarium

Family Code: 343

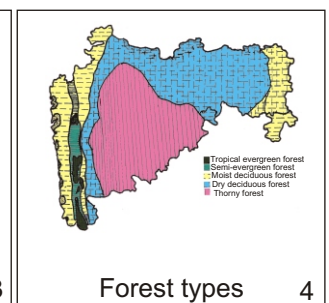
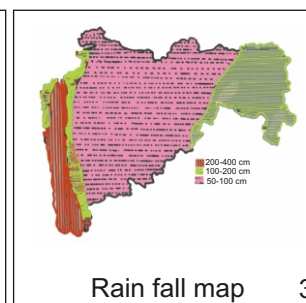
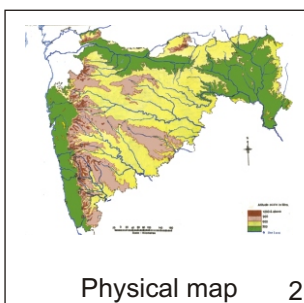
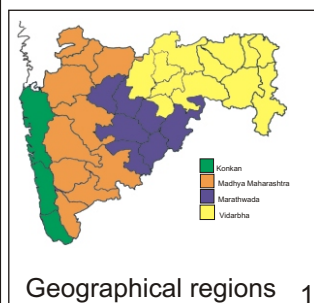
Species code: 29 - 14E

Naoroji Godrej Centre for Plant Research

Jasminum malabaricum Wight



1.Dhule 2.Jalgaon 3. Buldhana 4.Akola 5.Amaravati 6.Wardha 7.Nagpur 8. Bhandara 9. Gadchiroli
10. Chandrapur 11. Yavatmal 12. Nanded 13. Parbhani 14. Jalna 15. Aurangabad 16.Latur
17. Beed 18. Ahmadnagar 19 Nashik 20. Thane 21. Pune 22. Osmanabad 23. Solapur 24.Satara
25. Raigad 26 Sangli 27. Kolhapur 28. Sindhudurg 29. Ratnagiri 30.Mumbai 31.Greater Mumbai.



Localities- ●

1. Ahmednagar, 2. Akola, 3. Bombay, 4. Kolhapur, 5. Nasik, 6. Pune, 7. Raigad,
8. Ratnagiri, 9. Satara, 10. Thane district.

Geographical distribution:

Latitude (DMS): Between 18° 31' - 16° N & Longitude (DMS): 73° 50' - 74° 5' E;



Haritarium

Family Code: 343

Species code: 29 - 14F

Naoroji Godrej Centre for Plant Research

Jasminum malabaricum Wight

References:

Cooke. T (1904): **Flora of Presidency of Bombay**. Vol.2: 172.(rep. Ed.1967)

Hooker, J.D. *et al.*(1885):**The flora of British India**. London. Vol.3: 594.

Singh N.P. & S. Karthikeyan (2000):(eds), **Flora of Maharashtra state, Dicotyledones**.Vol. 2: . B.S.I., Calcutta:309

Tetali, *et al.* (2000): **Endemic Plants of India (A Status Report of Maharashtra State)**. Naoroji Godrej Centre for Plant Research, Shirwal: 37.