



Haritarium

Family Code: 131

Species code: 1 - 6A

Naoroji Godrej Centre for Plant Research

Kalanchoe olivacea Dalzell

Botanical name: *Kalanchoe olivacea* Dalzell

Vernacular name: -

Family : Crassulaceae.

Threatened category: -

Key characters: Leaves simple, Inflorescence glandular hairy, Flowers white, Stamens eight,

Description: Herbs, erect, brownish, succulent, Leaves sessile, obovate, apex obtuse, entire or irregularly crenate-serrate, often dotted with red spots. Flowers in panicles cymes; bracts linear-lanceolate; sepals free to base, upto 0.8 cm long. Carpels 4 upto 0.5 cm long.

Flowering and fruiting: October- December.

Distribution: India: Maharashtra.

Reported Localities: Pune, Satara.

Ecology: Occasional along the dry hills above the ghats.

Association: No specific association observed.



Haritarium

Family Code: 131

Species code: 1 - 6B

Naoroji Godrej Centre for Plant Research

***Kalanchoe olivacea* Dalzell**



1.Habit, 2.Flower, 3.Inflorescence, 4.Dissected flower, 5.Leaf.



Haritarium

Family Code: 131

Species code: 1 - 6C

Naoroji Godrej Centre for Plant Research

Kalanchoe olivacea Dalzell





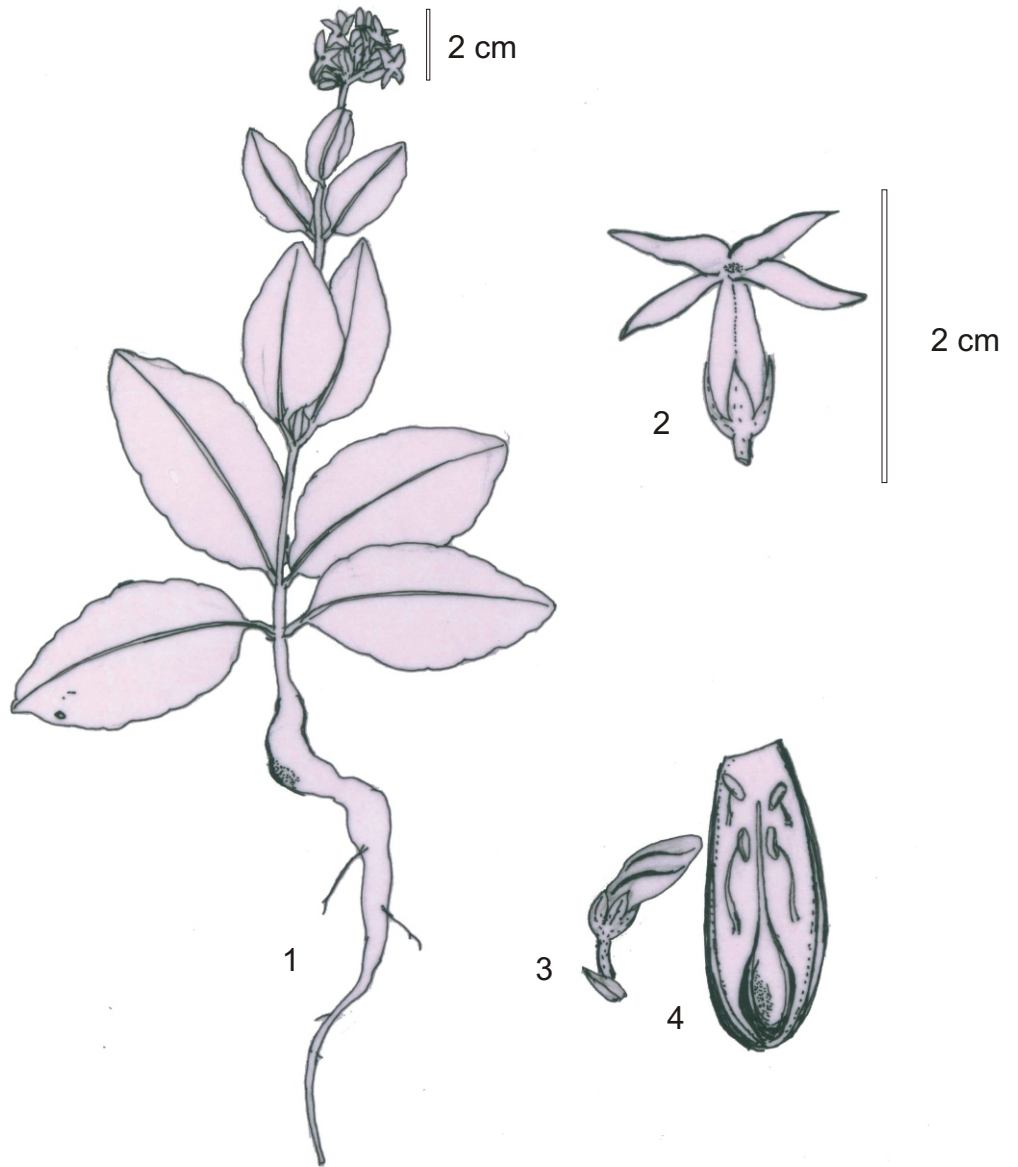
Haritarium

Family Code: 131

Species code: 1 - 6D

Naoroji Godrej Centre for Plant Research

***Kalanchoe olivacea* Dalzell**



1. Habit, 2. Flower, 3. Bud, 4. Dissected flower



Haritarium

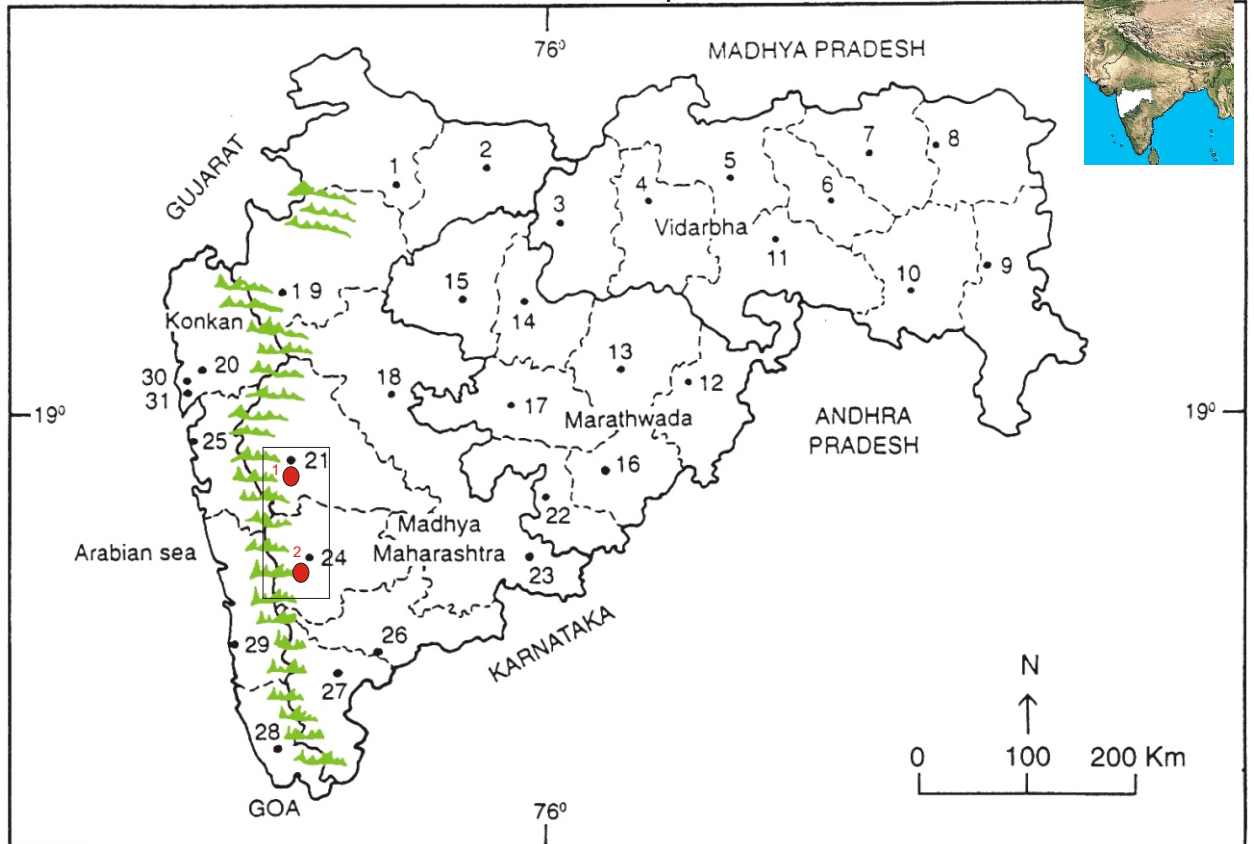
Family Code: 131

Species code: 1 - 6E

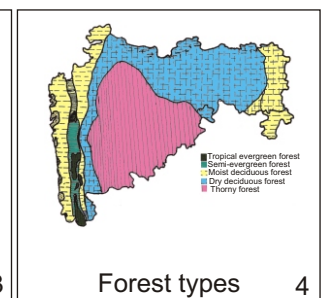
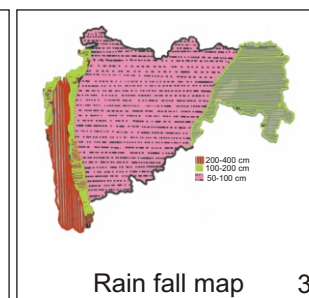
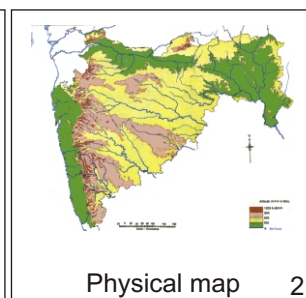
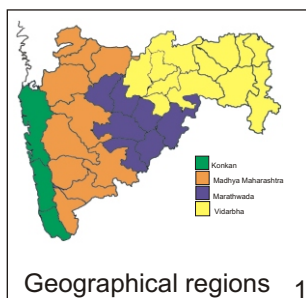
Naoroji Godrej Centre for Plant Research

Kalanchoe olivacea Dalzell

Location map



1. Dhule 2. Jalgaon 3. Buldhana 4. Akola 5. Amaravati 6. Vardha 7. Nagpur 8. Bhandara 9. Gadchiroli
 10. Chandrapur 11. Yavatmal 12. Nanded 13. Parbhani 14. Jalna 15. Aurangabad 16. Latur
 17. Beed 18. Ahmadnagar 19. Nashik 20. Thane 21. Pune 22. Osmanabad 23. Solapur 24. Satara
 25. Raigad, 26. Sangli 27. Kolhapur 28. Sindhudurg 29. Ratnagiri 30. Thane 31. Mumbai.



Distribution in districts- ●

1. Pune , 2. Satara.

Geographical distribution:

Latitude (DMS): Between 18 ° 31'- 16° 95' N & Longitude (DMS): 73 ° 52'-74° E;



Haritarium

Family Code: 131

Species code: 1 - 6F

Naoroji Godrej Centre for Plant Research

Kalanchoe olivacea Dalzell

References:

Cooke. T (1904): **Flora of Presidency of Bombay**. Vol.1: 584(rep. Ed.1967)

Gaikwad S.P. & S.R. Yadav(2004): in T. Pullaiah (ed.)Endemic flowering plant species of Maharashtra and their possible utilization; **Biodiversity in India**, Regancy publications, New Delhi:842.

Singh N.P. & S. Karthikeyan (2000):(eds), **Flora of Maharashtra state, Dicotyledones**.Vol. 1: . B.S.I., Calcutta:842.

Tetali, *et al.* (2000): **Endemic Plants of India (A Status Report of Maharashtra State)**. Naoroji Godrej Centre for Plant Research, Shirwal: 32