



Haritarium

Family Code: 522

Species code: 1-5A

Naoroji Godrej Centre for Plant Research

Pancratium parvum Dalzell

Botanical name: *Pancratium parvum* Dalzell

Vernacular name: -

Family : Amaryllidaceae

Threatened category: Not evaluated (Gaikawad & Yadav, 2004)

Key characters: Bulb with neck, Scapes slender, 15-30 cm long, flowers in umbels, perianth-tube 8-12cm long. staminal cup broad, filaments united towards their base by an intervening petaloid membrane, corona formed by extended filaments.

Description: Herbs with tunicate bulbs. Bulbs globose, upto 5 X 4 cm, narrowed into a stout long neck, Scape appears simultaneously with leaves from side of the bulb, Leaves linear lanceolate. 15-20 X 0.5-1.8 cm. Flowers white, 4-5, in terminal umbels Perianth tube 5-6 cm dilated above, Lobes 6, 2- 2.5 cm long linear, staminal cup funnel shaped, 6 toothed. Ovary 3 celled, style overtopping the anthers. Capsule ovoid, 3-lobed.

Flowering and fruiting: June -August

Distribution: India - Endemic to Peninsular India.

Reported Localities: Mumbai, Nasik, Pune (Katraj ghat, Purandhar), Satara, Thane.

Ecology: Occasionally in groups on open rocky hill-sides. Altitudes ranging between 600-1200m above sea level.

Association: No specific plant association is observed.



Haritarium

Family Code: 522

Species code: 1_5B

Naoroji Godrej Centre for Plant Research

***Pancratium parvum* Dalzell**



1. Habitat, 2. Inflorescence, 3., 5. Single flower, 4. Dissected flower, 7. T. S. Of ovary, 8. Capsule, 9. Seeds, 10. Corona, 11. Bulb. 12. Leaf - Dorsal side, 13. Leaf - Ventral side



Haritarium

Family Code: 522

Species code: 1-5C

Naoroji Godrej Centre for Plant Research

***Pancratium parvum* Dalzell**





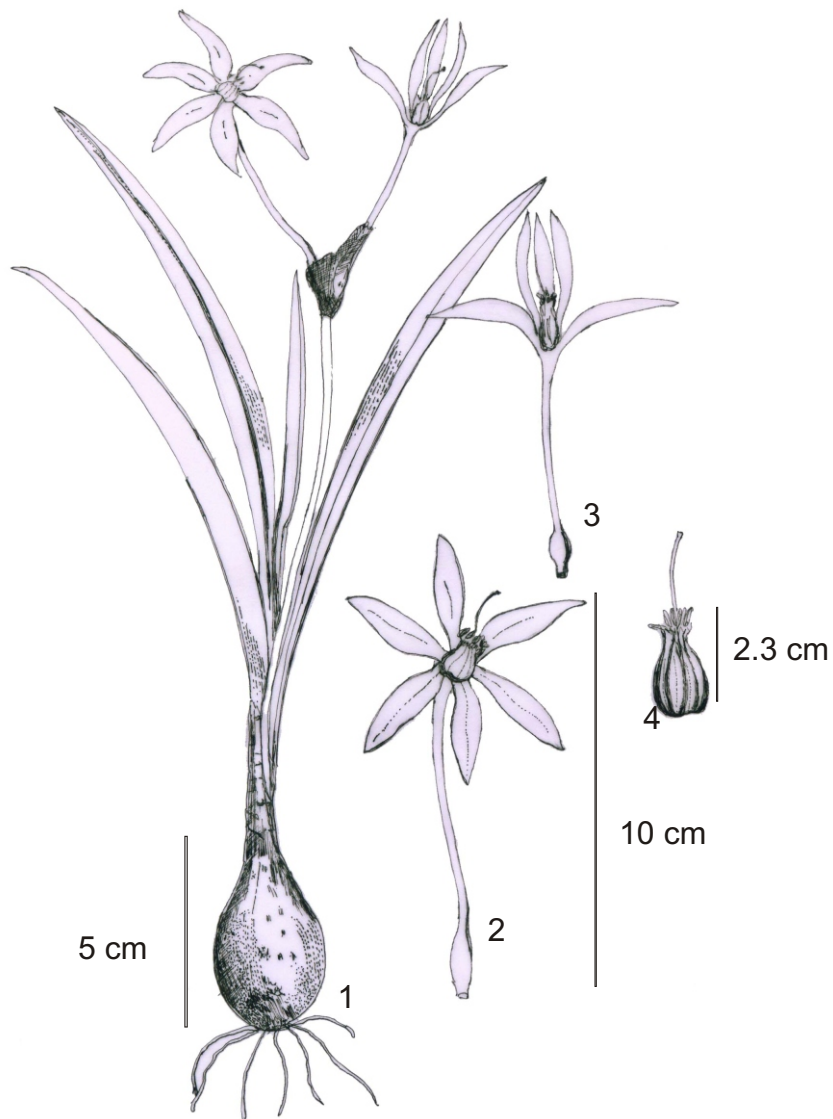
Haritarium

Family Code: 522

Species code: 1-5D

Naoroji Godrej Centre for Plant Research

***Pancratium parvum* Dalzell**



1. Habit, 2. Flower, 3. Flower V.S., 4. Ovary.



Haritarium

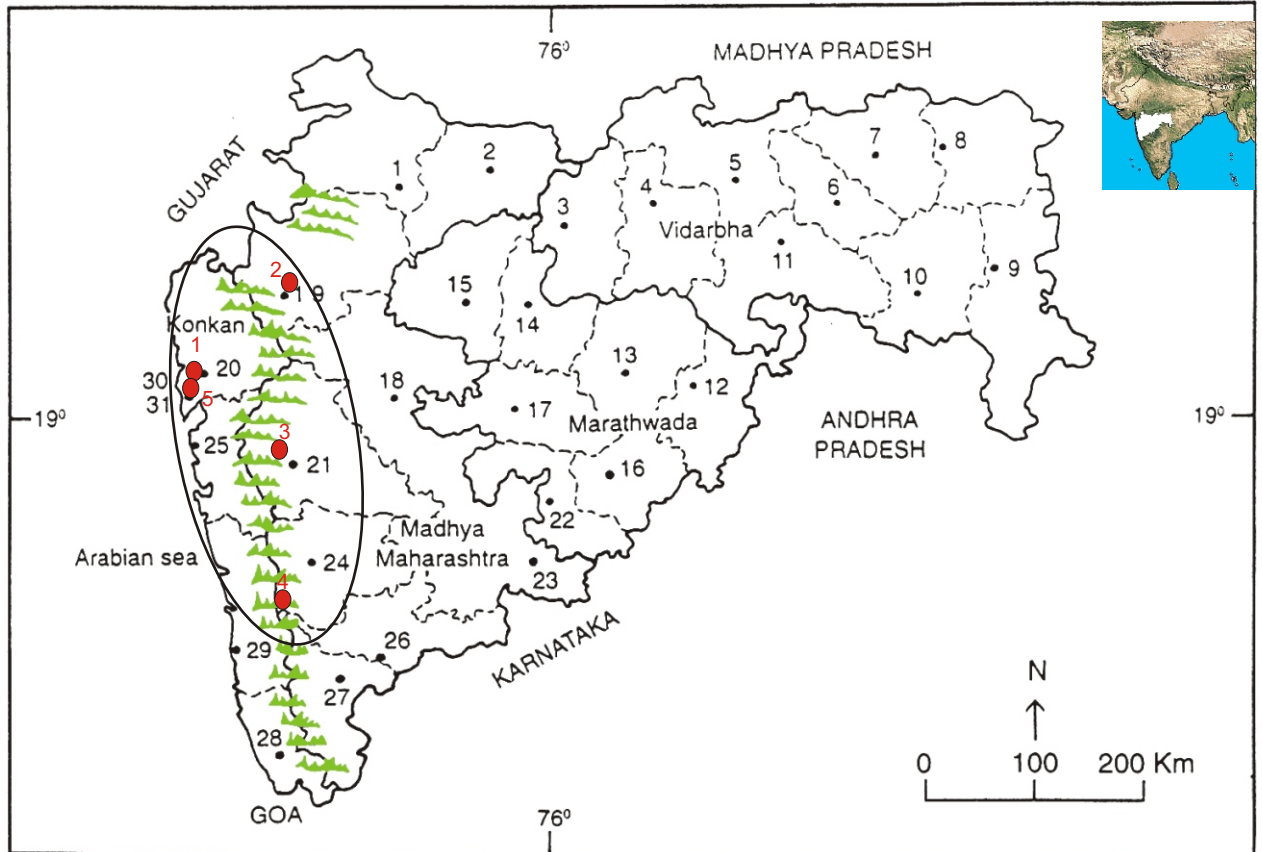
Family Code: 522

Species code: 1_5E

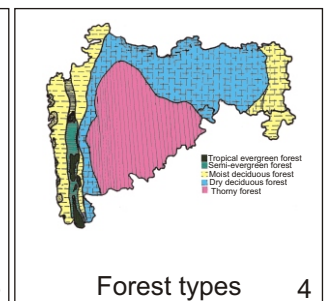
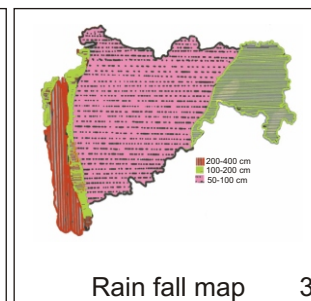
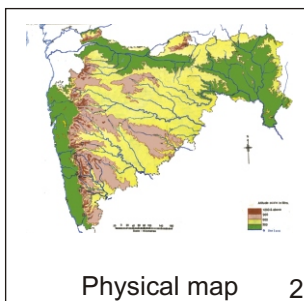
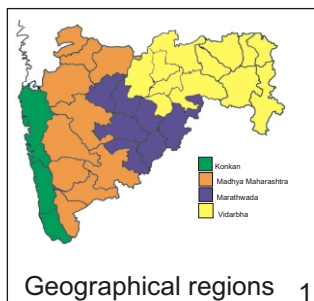
Naoroji Godrej Centre for Plant Research

Pancretium parvum Dalzell

Location map



1.Dhule 2.Jalgaon 3. Buldhana 4.Akola 5.Amaravati 6.Wardha 7.Nagpur 8. Bhandara 9. Gadchiroli
10. Chandrapur 11. Yavatmal 12. Nanded 13. Parbhani 14. Jalna 15. Aurangabad 16.Latur
17. Beed 18. Ahmadnagar 19 Nashik 20. Thane 21. Pune 22. Osmanabad 23. Solapur 24.Satara
25. Raigad 26. Sangli 27. Kolhapur 28. Sindhudurg 29. Ratnagiri 30.Mumbai 31.Greater Mumbai.



Distribution in following districts ●

1. Mumbai, 2. Nasik, 3. Pune, 4. Satara, 5. Thane.

Geographical distribution in Maharashtra:

Latitude (DMS): 19° 58' - 16° 95' N & Longitude (DMS): 72° 49' - 73° 52' E.



Haritarium

Family Code: 522

Species code: 1-5F

Naoroji Godrej Centre for Plant Research

Pancratium parvum Dalzell

References:

Cooke. T (1904): **Flora of Presidency of Bombay**. Vol.3: 260 (rep. Ed.1967)

Gaikwad S.P. & S.R. Yadav(2004): in T. Pullaiah (ed.)Endemic flowering plant species of Maharashtra and their possible utilization; **Biodiversity in India**, Regancy publications, New Delhi:50.

Hooker, J.D. *et al.*(1892):**The flora of British India**. London. Vol. 6: 286.

Laxminarasimhan, P.(1996): in B.D. Sharma, S. Karthikeyan & N.P.Singh (eds), **Flora of Maharashtra state, Monocot**. B.S.I., Calcutta:99.