



**Haritarium**

Family Code: 71

Species code: 8 - 1A

**Naoroji Godrej Centre for Plant Research**

**Paracaryopsis coelestina (Lindl.) R. Mill**

**Botanical name:** *Paracaryopsis coelestina* (Lindl.) R. Mill

(= *Cynoglossum coelestinum* Lindl., = *Paracaryum coelestinum* (Lindl.), = *Adelocaryum coelestinum* (Lindl.))

**Family:** Boraginaceae

**Vernacular name:** Nisurdi.

**Threatened category:** Low risk (Gaikwad & Yadav, 2004).

**Key characters:** Herbs with reddish stems and large scabrid, cordate leaves. Flowers in long forked racemes, dull blue with a dark centre, calyx ciliate, styles simple, anthers included, ovary 4 lobed. Seeds with prominent margins.

**Description:** Biennial or perennial herbs. Roots woody, stem erect, reddish, 1 – 1.5 m tall. Younger branches pubescent, the older glabrous. Leaves submembranous: radical very large 12-20 X 8-18 cm, broadly ovate, scabrid on both sides, base cuneate. Flowers in forked racemes; calyx ciliate, persistent; corolla 0.6 cm long, pale blue with darker centre, often tinged with pink, tube equaling the suborbicular spreading lobes; scales in the mouth of the tube notched at the apex. Anthers included, filaments short. Ovary deeply 4-lobed. Stigma capitate. Fruit pyramidal. Nutlets ovate, 4 margins prominent and hooked bristles along the margins and the faces between.

**Flowering and fruiting:** September – November.

**Distribution:** India – Endemic to Western Ghats.

**Localities:** Ahmednagar, Dhule, Kolhapur, Nasik, Pune, Raigad, Ratnagiri, Satara, Sindhudurg.

**Ecology:** Occasional in open situations, on plateaux and on gentle slopes from Ghats to plains. Altitude ranges from 300-1200m above sea level.

**Association:** No specific plant association is observed but grows among grasses and other herbs.



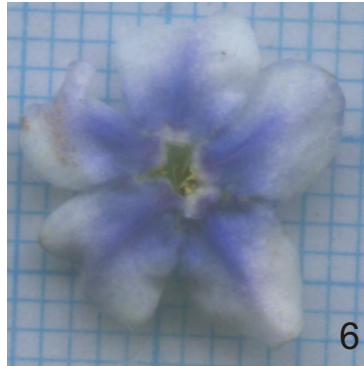
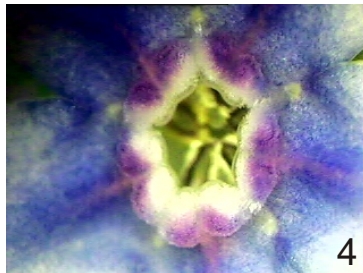
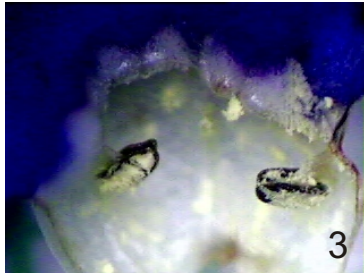
**Haritarium**

Family Code: 71

Species code: 8 - 1B

**Naoroji Godrej Centre for Plant Research**

***Paracaryopsis coelestina* (Lind.)R. Mill**



1.Habit, 2.,4.,5.& 6.Flower,7.Inflorescence,8.Leaf- Dorsal side 9.Leaf - Ventral side.





**Haritarium**

Family Code: 71

Species code: 8 - 1C

**Naoroji Godrej Centre for Plant Research**

**Paracaryopsis coelestina (Lind.)R. Mill**





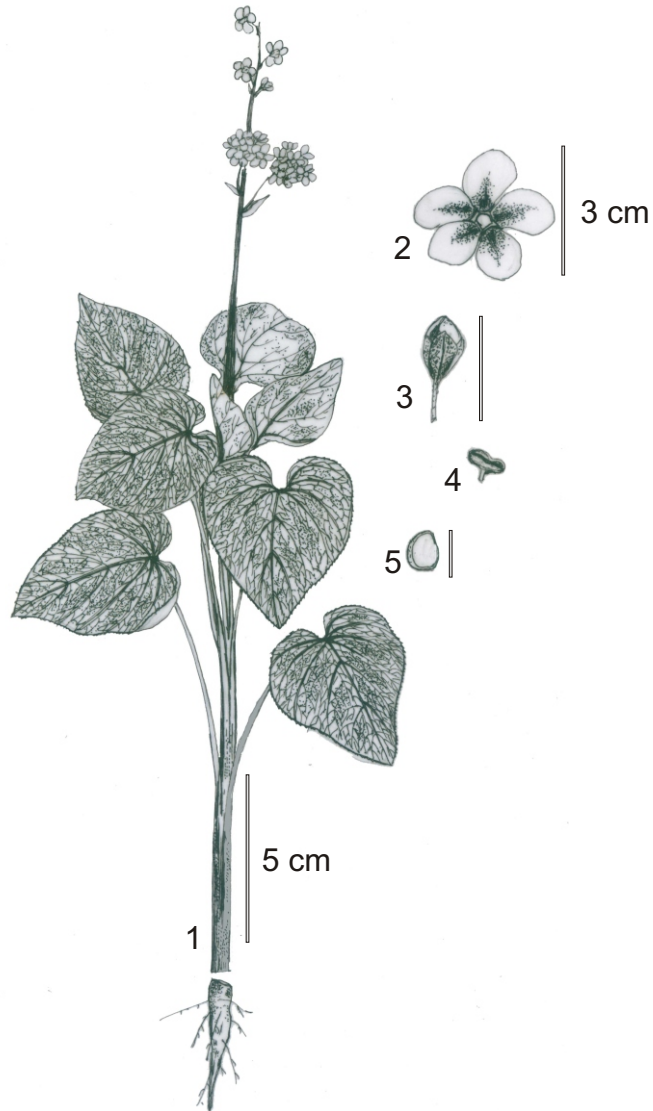
**Haritarium**

Family Code: 71

Species code: 8 - 1D

**Naoroji Godrej Centre for Plant Research**

***Paracaryopsis coelestina* (Lind.)R. Mill**



1.Habit, 2. Flower, 3. Bud, 4. Anther, 5. Seed.!



**Haritarium**

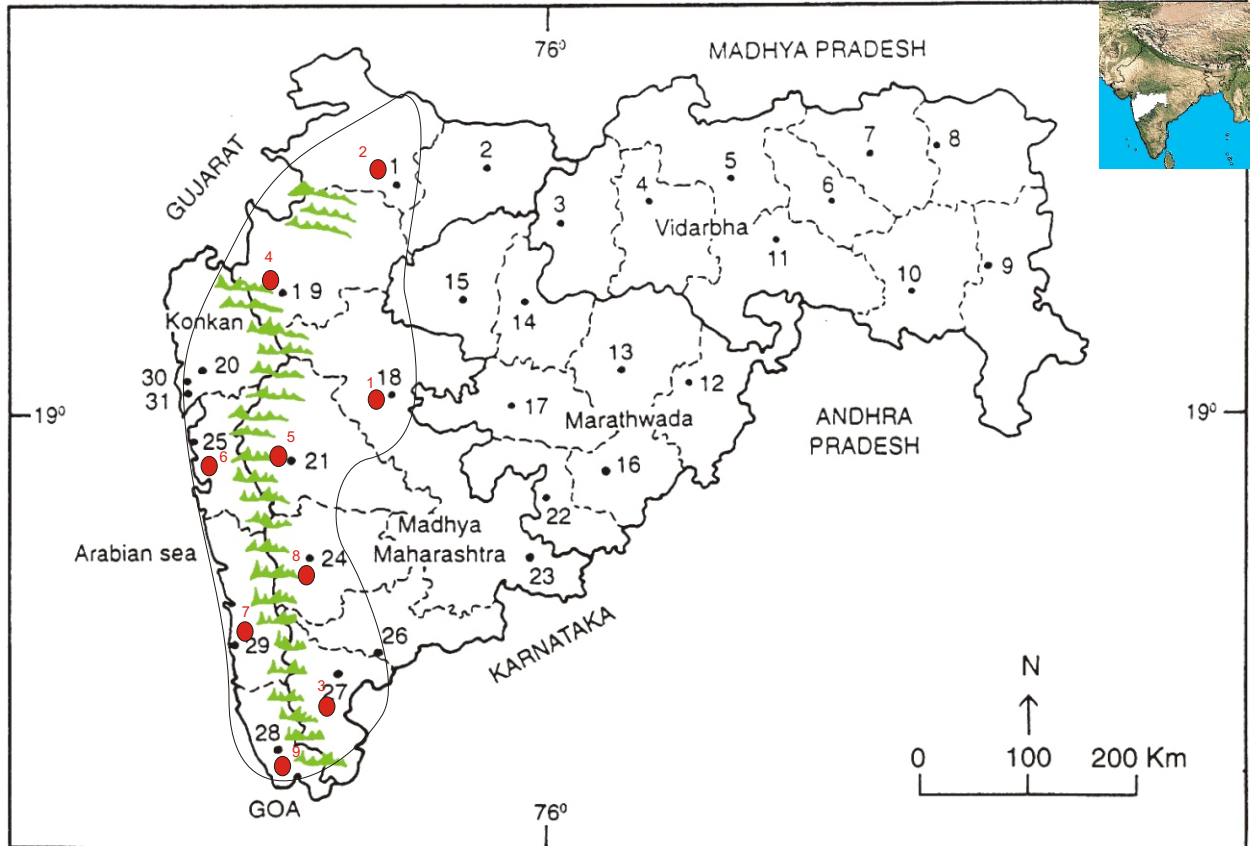
Family Code: 71

Species code: 8 - 1E

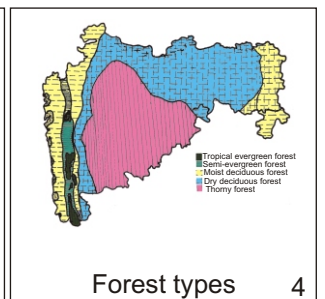
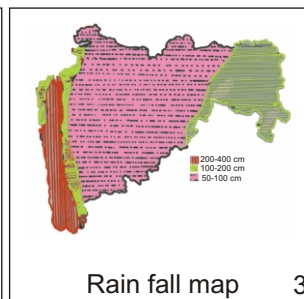
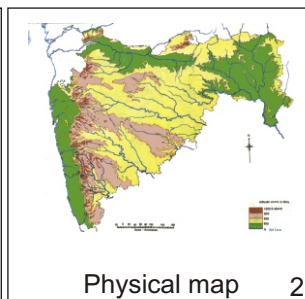
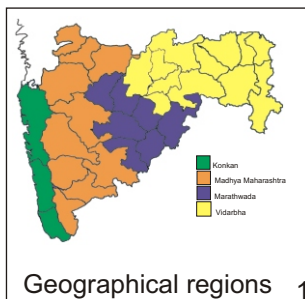
**Naoroji Godrej Centre for Plant Research**

**Paracaryopsis coelestina (Lind.)R. Mill**

Location map



- 1.Dhule 2.Jalgaon 3. Buldhana 4.Akola 5.Amaravati 6.Wardha 7.Nagpur 8. Bhandara 9. Gadchiroli  
 10. Chandrapur 11. Yavatmal 12. Nanded 13. Parbhani 14. Jalna 15. Aurangabad 16.Latur  
 17. Beed 18. Ahmadnagar 19 Nashik 20. Thane 21. Pune 22. Osmanabad 23. Solapur 24.Satara  
 25. Raigad 26.Sangli 27. Kolhapur 28. Sindhudurg 29. Ratnagiri 30.Mumbai 31.Greater Mumbai.



Localities- ●

- 1.Ahmednagar, 2.Dhule, 3.Kolhapur,4. Nasik, 5.Pune, 6.Raigad, 7.Ratnagiri, 8.Satara, 9.Sindhudurg.

Geographical distribution in Maharashtra:

Latitude (DMS): Between 20° 53' -17° 49' N & Longitude (DMS): 72° 58' -74° .43' E.



**Haritarium**

Family Code: 71

Species code: 8 - 1F

**Naoroji Godrej Centre for Plant Research**

**Paracaryopsis coelestina (Lind.)R. Mill**

**References:**

Cooke. T (1904): **Flora of Presidency of Bombay**. Vol.2: 285 (rep. Ed.1967)

Gaikwad S.P. & S.R. Yadav(2004): in T. Pullaiah (ed.)Endemic flowering plant species of Maharashtra and their possible utilization; **Biodiversity in India**, Regancy publications, New Delhi:44.

Hooker, J.D. *et al.*(1890):**The flora of British India**. London. Vol.4: 160.

Santapau, H. (1955): *Rec. Bot. Surv. India* 16(1):167(3<sup>rd</sup> rev.ed.).

Tetali, *et al.* (2000): **Endemic Plants of India ( A Status Report of Maharashtra State)**. Naoroji Godrej Centre for Plant Research, Shirwal: 32.