



Haritarium

Family Code: 579

Species code: 29 - 2A

Naoroji Godrej Centre for Plant Research

Porpax jerdoniana (Wight) Rolfe.

Botanical name: *Porpax jerdoniana* (Wight) Rolfe.

(=*Lichenora jerdoniana* Wt., =*Eria lichenora* Lindl., =*Pinalia jerdoniana*(Wt.)O.Kuntze, *P. lichenora*)

Vernacular name: -

Family : Orchidaceae

Threatened category: **Vulnerable** (Gaikwad & Yadav, 2004)

Key characters: A small epiphytic orchid, Pseudobulbs flattened, disc-like. Leaves appearing with flowers; flowers dirty orange brown to yellow, 2-lipped, almost tomentose outside, glabrous within; Sepals united into a tube.

Description: Small epiphytic herbs. Pseudobulbs green, discoid, 0.5-1 cm in diameter, enclosed in a sheath of reticulated fibre. Leaves broadly ovate or orbicular, ciliate, 2 cm long, 1.25 cm broad with affine reticulation of lighter-coloured veins, pubescent and persistent even when the plant is in flower. Sepals brick red or deep reddish brown inside. Flowers 2 or 3, present between leaves, dirty orange brown or yellow. 0.75 cm long, 2-lipped. Lip papillose with a tongue-like projection at the base.

Flowering and fruiting: June - July.

Distribution: India: Endemic to Peninsular India.

Localities: Raigad, Ratnagiri (Dapoli), Satara, Sindhudurg, Thane.

Ecology: A rare orchid restricted to protected evergreen forests and sacred groves. Grows on the main trunks, above 2m high, on large and old trees. No where it is abundant, forming everywhere small colonies of 2 to 5 individuals. It is mostly restricted to ghat areas, between 600-900m above sea level.

Association: No specific plant association is observed, but seems to prefer *Mangifera indica*, *Terminalia bellerica* trees.



Haritarium

Family Code: 579

Species code: 29 - 2B

Naoroji Godrej Centre for Plant Research

***Porpax jerdoniana* (Wight) Rolfe.**



1.Habit, 2.& 5. Dissected flower, 3,4, & 6 Flower close up view 7.Leaves -Dorsal view, 8. Leaves- Ventral view.



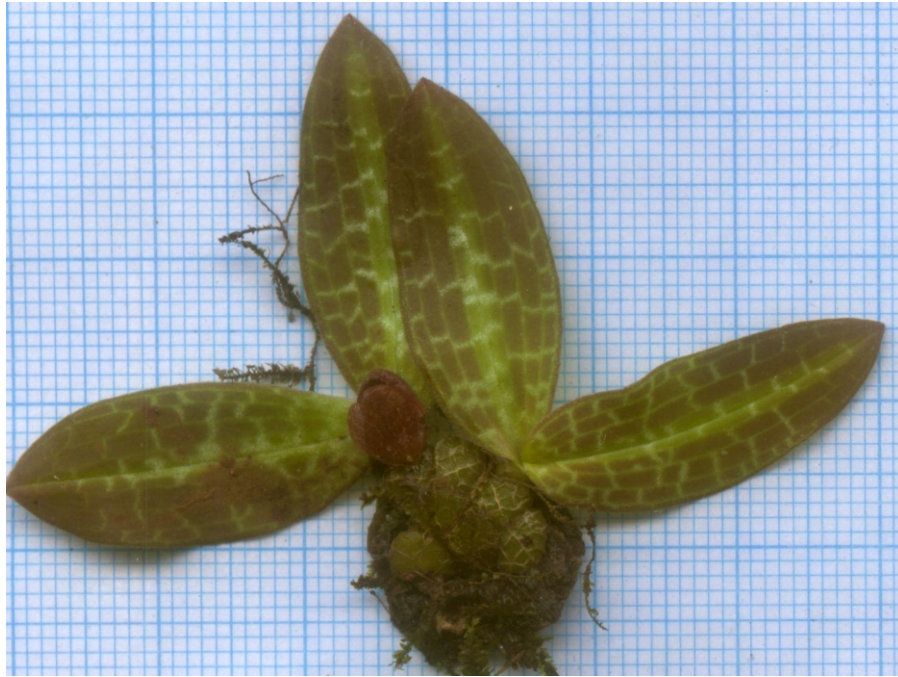
Haritarium

Family Code: 579

Species code: 29 - 2C

Naoroji Godrej Centre for Plant Research

***Porpax jerdoniana* (Wight) Rolfe.**





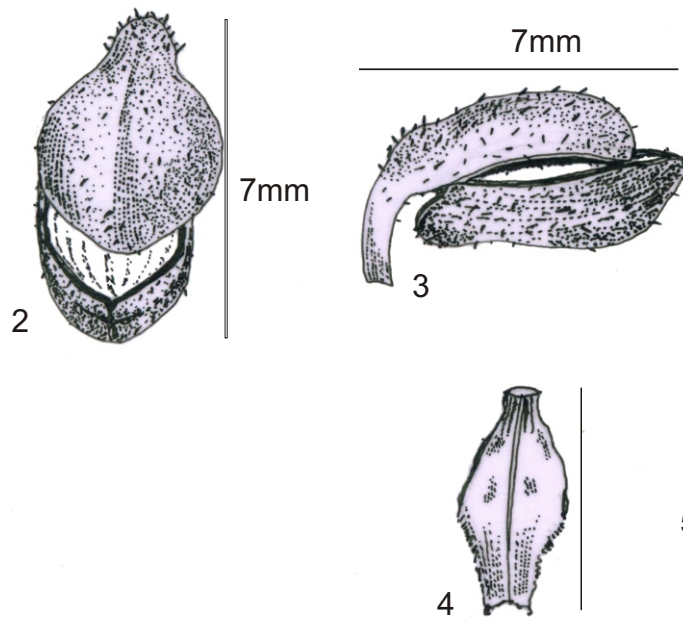
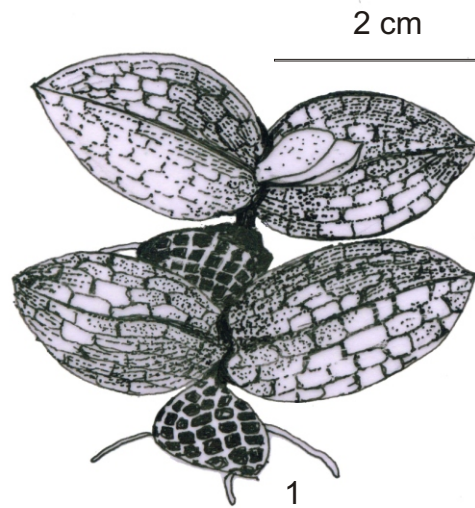
Haritarium

Family Code: 579

Species code: 29 - 2D

Naoroji Godrej Centre for Plant Research

***Porpax jerdoniana* (Wight) Rolfe.**



1.Habit, 2.&3. Flower, 4.

5. Pollinia



Haritarium

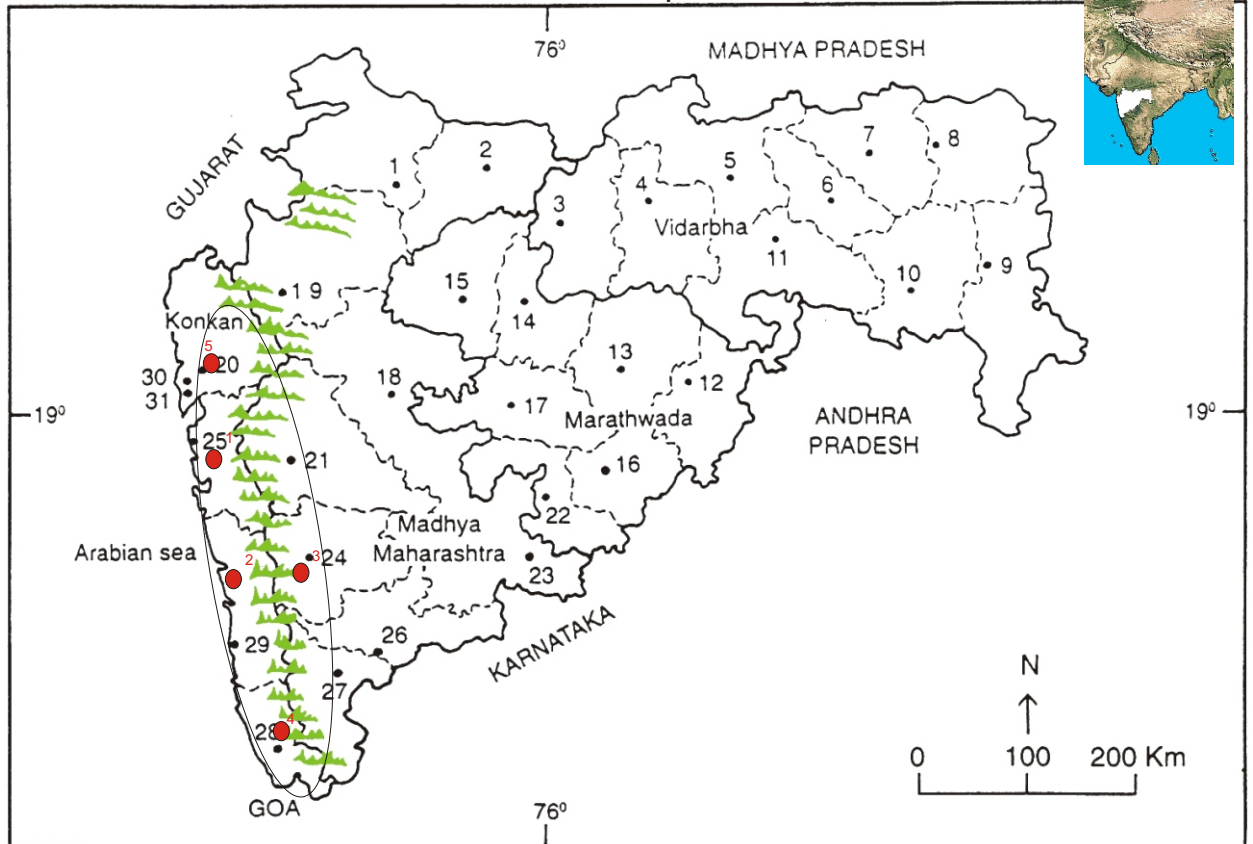
Family Code: 579

Species code: 29 - 2E

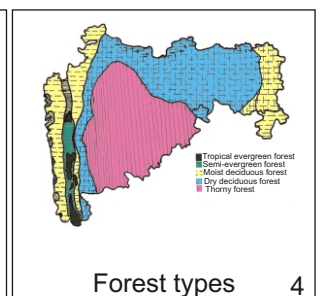
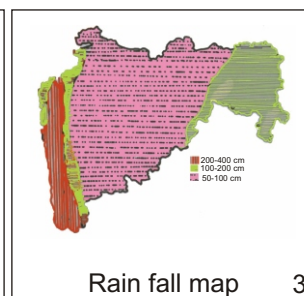
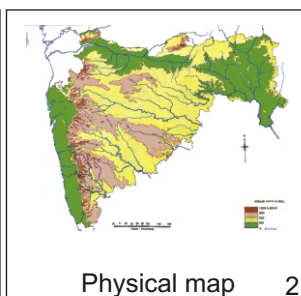
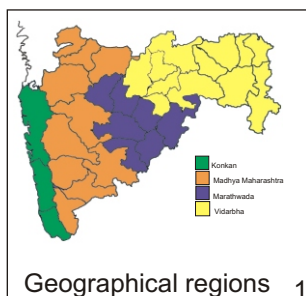
Naoroji Godrej Centre for Plant Research

***Porpax jerdoniana* (Wight) Rolfe.**

Location map



1. Dhule 2. Jalgaon 3. Buldhana 4. Akola 5. Amaravati 6. Vardha 7. Nagpur 8. Bhandara 9. Gadchiroli
 10. Chandrapur 11. Yavatmal 12. Nanded 13. Parbhani 14. Jalna 15. Aurangabad 16. Latur
 17. Beed 18. Ahmadnagar 19. Nashik 20. Thane 21. Pune 22. Osmanabad 23. Solapur 24. Satara
 25. Raigad 26. Sangli 27. Kolhapur 28. Sindhudurg 29. Ratnagiri 30. Thane 31. Mumbai.



Localities- ●

1. Raigad, 2. Ratnagiri, 3. Satara, 4. Sindhudurg, 5. Thane.

Geographical distribution in Maharashtra:

Latitude (DMS): Between 19° - 58' - 17° 49' N & Longitude (DMS): 72° 52' - 74° E.



Haritarium

Family Code: 579

Species code: 29 - 2F

Naoroji Godrej Centre for Plant Research

Porpax jerdoniana (Wight) Rolfe.

References:

Cooke, T. (1904): **The Flora of Presidency of Bombay**. Vol.3: 192. (rep. Ed.1958).

Gaikwad S.P. & S.R. Yadav(2004): in T. Pullaiah (ed.)Endemic flowering plant species of Maharashtra and their possible utilization; **Biodiversity in India**, Regancy publications, New Delhi:50.

Laxminarasimhan, P.(1996): in B.D. Sharma, S. Karthikeyan & N.P.Singh (eds), **Flora of Maharashtra state, Monocot**. B.S.I., Calcutta: 59-60.

Santapau, H. & Kapadia Z.(1966): **The Orchids of Bombay**: Manager of Publications, Delhi:158.

Tetali, *et al.* (2000): **Endemic Plants of India (A Status Report of Maharashtra State)**. Naoroji Godrej Centre for Plant Research, Shirwal: 83.