



Haritarium

Family Code: 579

Species code: 29 - 1A

Naoroji Godrej Centre for Plant Research

Porpax reticulata Lindl.

Botanical name: *Porpax reticulata* Lindl.

(= *Porpax papillosa* Blatt. & McC.; *Aggeianthus marchantioles* Wt., *Eria reticulata* Benth., = *Pinalia reticulata* (Lindl.) O. Kuntze.)

Vernacular name: -

Family : Orchidaceae

Threatened category: **Low risk** (Gaikwad & Yadav, 2004).

Key characters: Epiphytic herbs. Pseudobulbs flattened, disc-like. Flowers tubular, deep red brown, papillate or pilose inside, sepals united at base to form a tube.

Description: Small epiphytic orchids. Pseudobulbs green, discoid, 0.5-1 cm in diameter, enclosed in a sheath of reticulated fibre. Leaves small pubescent, broadly oblong, 1.5 cm long, dark green. Flowers solitary, fleshy, lateral and reddish-purple in colour. Pedicel as short as the flower to appear sessile. Flowers 0.75 cm long, 0.4 cm across. Sepals connivent at the base. Mouth triangular. Petals included inside this tube, deep red brown, 0.5 cm long, 0.2 cm wide. Lip 3 lobes, papillose inside with a tongue like projection at the base.

Flowering and fruiting: June – October.

Distribution: India- Endemic to Western Peninsula.

Reported Localities: Maharashtra - Kolhapur, Pune, Raigad, Ratnagiri, Satara.

Ecology: Not easily found. Grows preferably on large and mature evergreen trees with bark forming small cork like projections. The main trunk and the beginning portions of the main branches covered with moss seem to provide an ideal micro habitat. It is generally found growing 2 m above the ground. In natural conditions it is distributed between 600-1200m above sea level.

Association: No specific plant association is observed, but prefers to grow on *Mangifera indica*



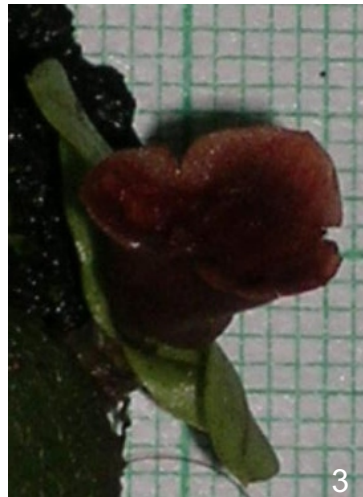
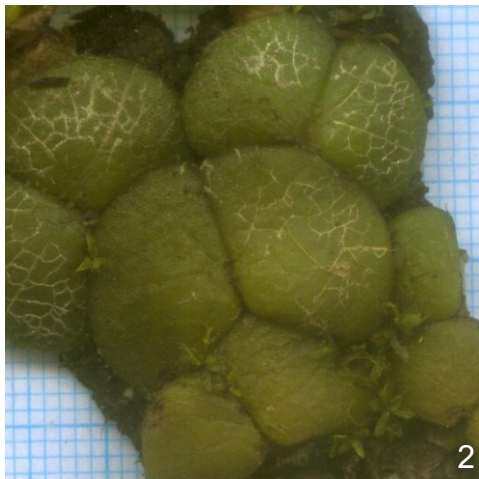
Haritarium

Family Code: 579

Species code: 29 - 1B

Naoroji Godrej Centre for Plant Research

***Porpax reticulata* Lindl.**



1.Habit, 2. Pseudo bulbs, 3. Flower, 4.Leaves -Dorsal view,5. Leaves- Ventral view.



Haritarium

Family Code: 579

Species code: 29 - 1C

Naoroji Godrej Centre for Plant Research

***Porpax reticulata* Lindl.**





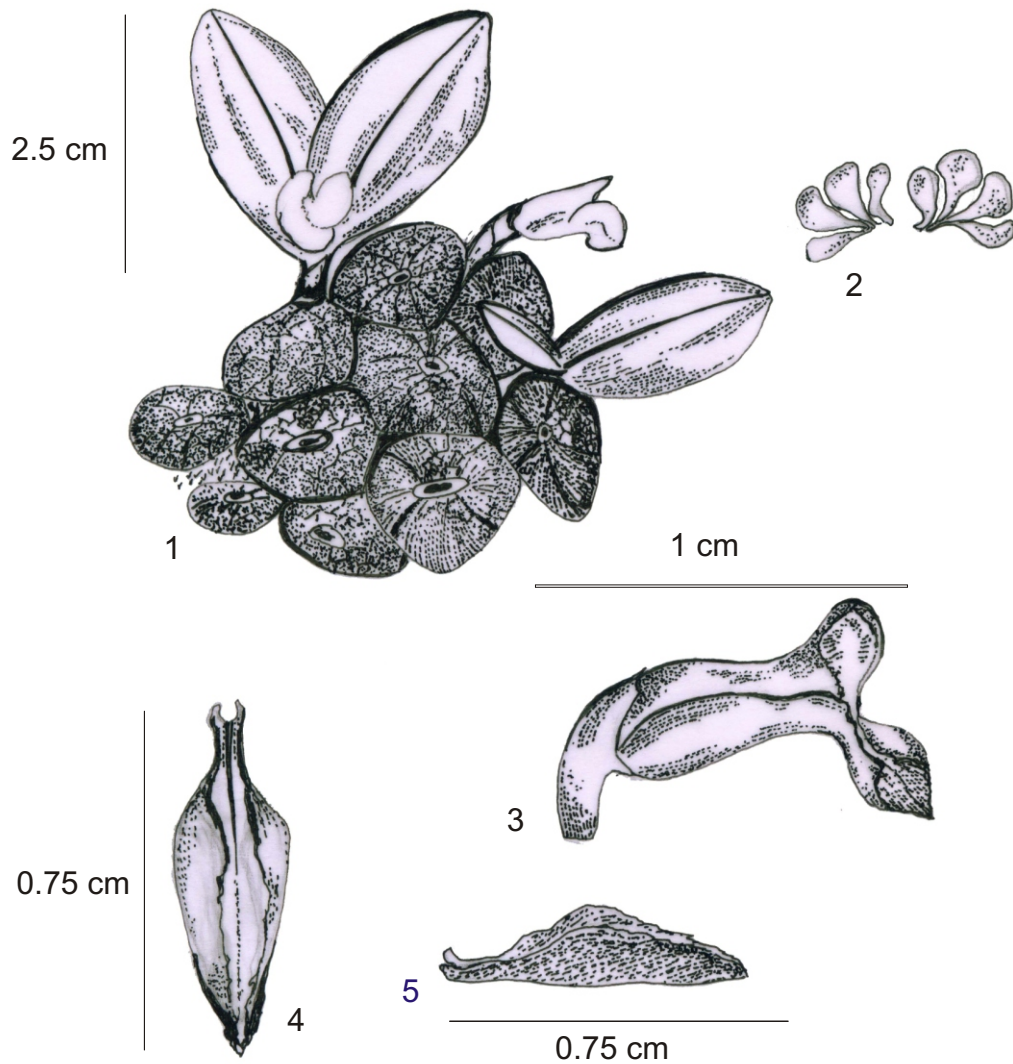
Haritarium

Family Code: 579

Species code: 29 - 1D

Naoroji Godrej Centre for Plant Research

***Porpax reticulata* Lindl.**



1.Habit, 2. Pollinia, 3. Flower, 4. & 5. Lip.



Haritarium

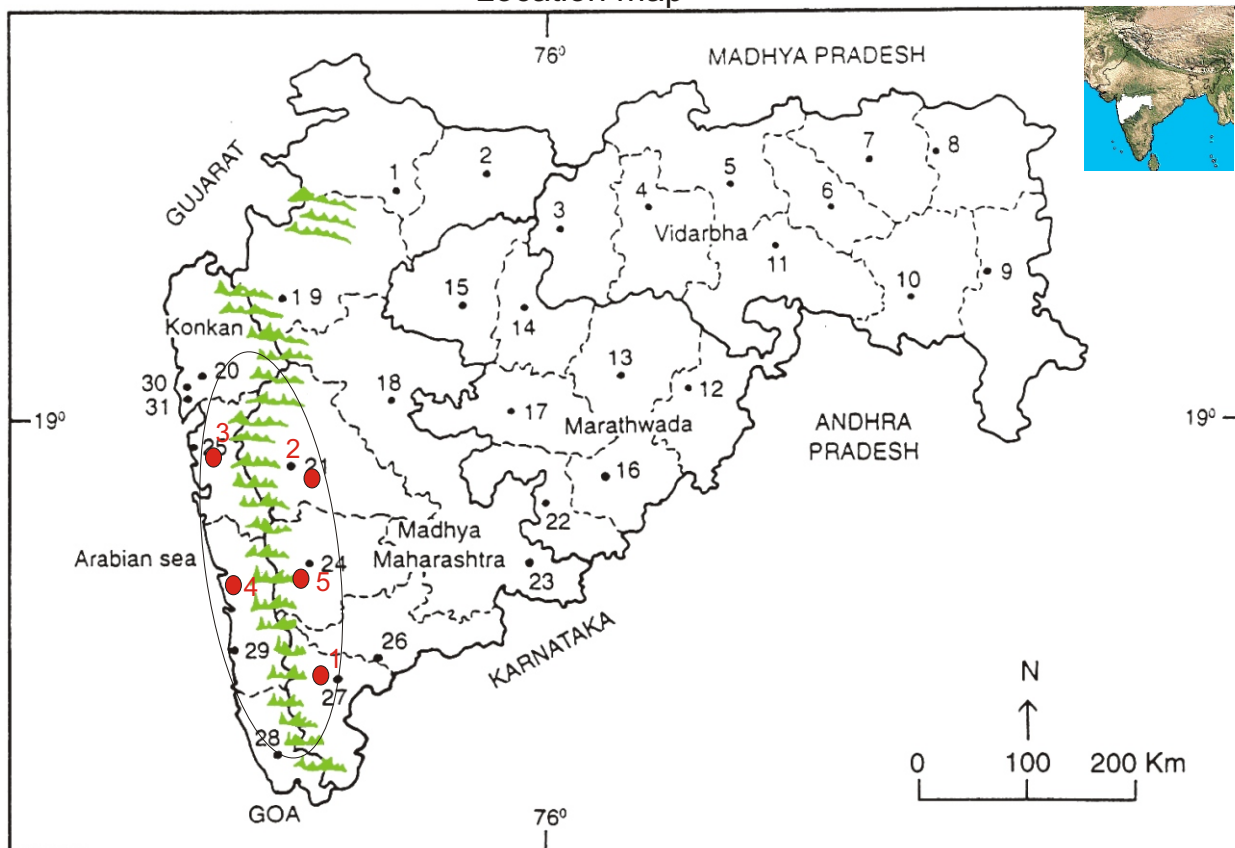
Family Code: 579

Species code: 29 - 1E

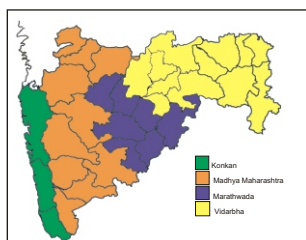
Naoroji Godrej Centre for Plant Research

Porpax reticulata Lindl.

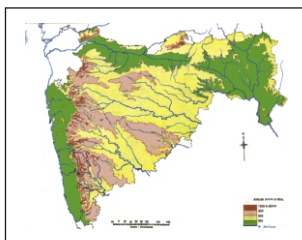
Location map



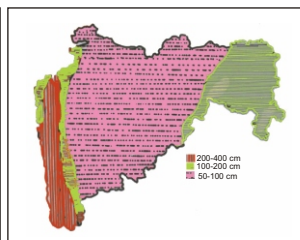
1. Dhule 2. Jalgaon 3. Buldhana 4. Akola 5. Amaravati 6. Vardha 7. Nagpur 8. Bhandara 9. Gadchiroli
10. Chandrapur 11. Yavatmal 12. Nanded 13. Parbhani 14. Jalna 15. Aurangabad 16. Latur
17. Beed 18. Ahmadnagar 19. Nashik 20. Thane 21. Pune 22. Osmanabad 23. Solapur 24. Satara
25. Raigad 26. Sangli 27. Kolhapur 28. Sindhudurg 29. Ratnagiri 30. Thane 31. Mumbai.



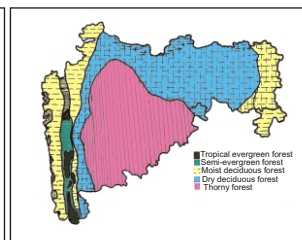
Geographical regions 1



Physical map 2



Rain fall map 3



Forest types 4

Localities- ●

1. Kolhapur, 2. Pune, 3. Raigad 4. Ratnagiri, 5. Satara,

Geographical distribution:

Latitude (DMS): Between $18^{\circ} 31'$ - 16° N & Longitude (DMS): $73^{\circ} 50'$ - $74^{\circ} 5'$ E;



Haritarium

Family Code: 579

Species code: 29 - 1F

Naoroji Godrej Centre for Plant Research

Porpax reticulata Lindl.

References:

- Cooke, T. (1904): **The Flora of Presidency of Bombay**. Vol.3: 192. (rep. Ed.1958).
- Gaikwad S.P. & S.R. Yadav(2004): in T. Pullaiah (ed.)Endemic flowering plant species of Maharashtra and their possible utilization; **Biodiversity in India**, Regancy publications, New Delhi:50.
- Hooker, J.D. *et al.*(1890):**The flora of British India**. London. Vol. 5: 786.
- Laxminarasimhan, P.(1996): in B.D. Sharma, S. Karthikeyan & N.P.Singh (eds), **Flora of Maharashtra state, Monocot**. B.S.I., Calcutta: 60.
- Santapau, H. & Kapadia Z.(1966): **The Orchids of Bombay**: Manager of Publications, Delhi:157.
- Tetali, *et al.* (2000): **Endemic Plants of India (A Status Report of Maharashtra State)**. Naoroji Godrej Centre for Plant Research, Shirwal: 83.