



Haritarium

Family Code: 39

Species code: 45 -2A

Naoroji Godrej Centre for Plant Research

Senecio edgeworthii Hook f.

Botanical name: *Senecio edgeworthii* Hook. F.

Vernacular name: Sonaki

Family : Asteraceae (Compositae)

Threatened category: Low risk (Gaikwad & Yadav, 2004).

Key characters: Suffruticose herb, leaves ovate or rhomboid, clothed beneath with white or grey cottony tomentum, heads yellow .

Description: Suffruticose, perennial herbs, erect, about 50 cm long. Stem and branches terete or obtusely angled. Leaves cordate or rhomboid,, ovate-lanceolate, acute or obtuse at apex, more or less hairy, white tomentose below, auricled at base, 5-10 X 2-3 cm. Heads yellow, in lax corymbs on slender peduncles. Involucral bracts 1-2 subseriate. Rayl florets 8-16, sterile, yellow, ligulate, ligules linear, 4 nerved, obscurely 3 toothed. Achenes oblong, faintly ribbed brown. Pappus bristles white, longer than achenes.

Flowering and fruiting: August – January.

Distribution: India – Endemic to India.

Reported Localities in districts: Ahmednagar, Aurangabad, Beed, Dhule, Kolhapur, Nasik, Pune, Ratnagiri, Satara.

Ecology: Occasionally seen in small scattered groups on steep slopes, in the crevices of rocks. Altitude ranges between 600-1200m above sea level.

Association: No specific plant association is observed.



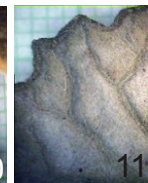
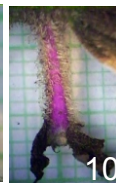
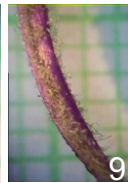
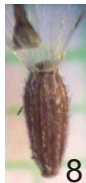
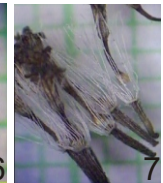
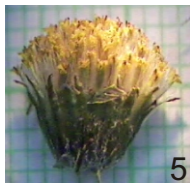
Haritarium

Family Code: 39

Species code: 45 -2B

Naoroji Godrej Centre for Plant Research

***Senecio edgeworthii* Hook f.**



1. Habit, 2. Inflorescence, 3.-5. Flower head 6. Disc floret, 7.-8. Achene, 9.-10. Peduncle, 11-12 Leaf closeup view, 13. & 15. Leaf - Dorsal view, 14 & 16. Leaf - ventral view.



Haritarium

Family Code: 39

Species code: 45 -2C

Naoroji Godrej Centre for Plant Research

***Senecio edgeworthii* Hook f.**





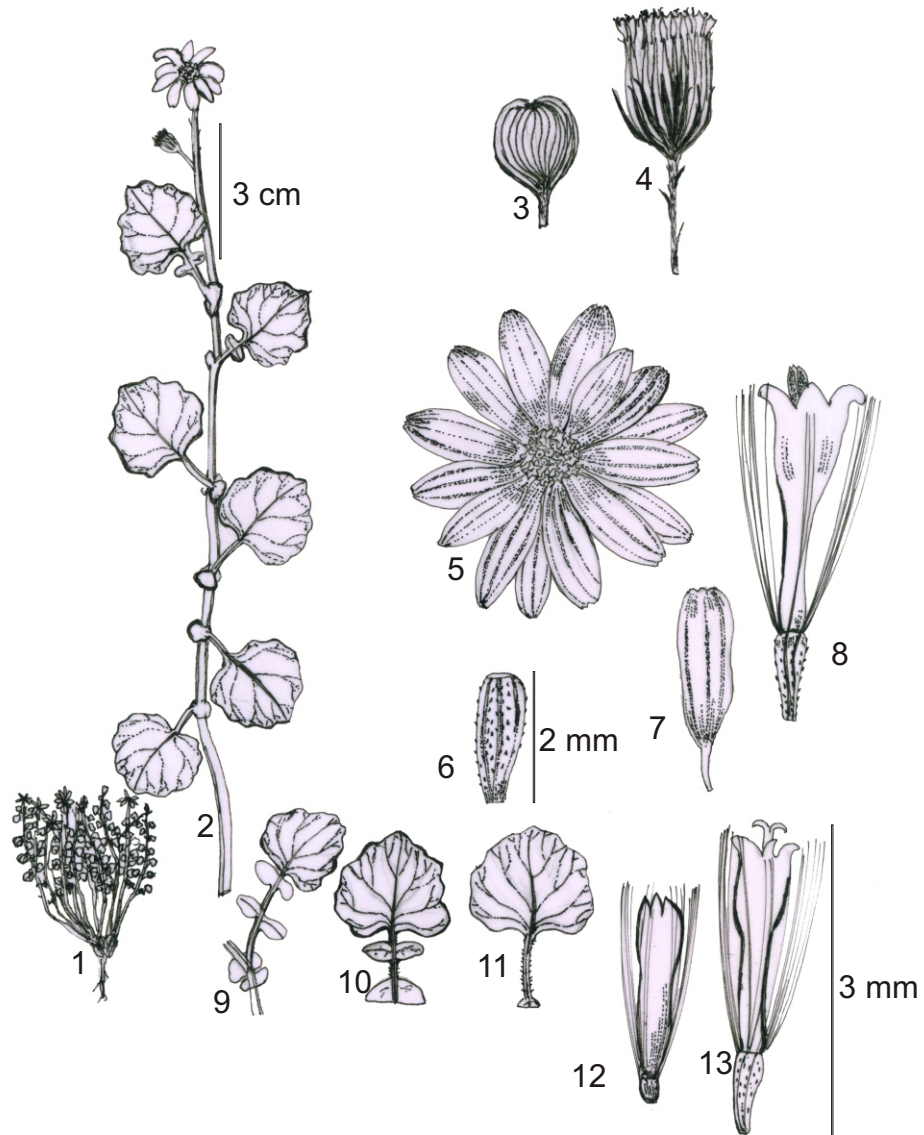
Haritarium

Family Code: 39

Species code: 45 -2D

Naoroji Godrej Centre for Plant Research

***Senecio edgeworthii* Hook f.**



1. Habit, 2. Flowering branch, 3- 4. Flowering head, 6. Achene, 7. Ray floret, 8., 12. & 13. Disc floret, 9.- 11. Leaf variation



Haritarium

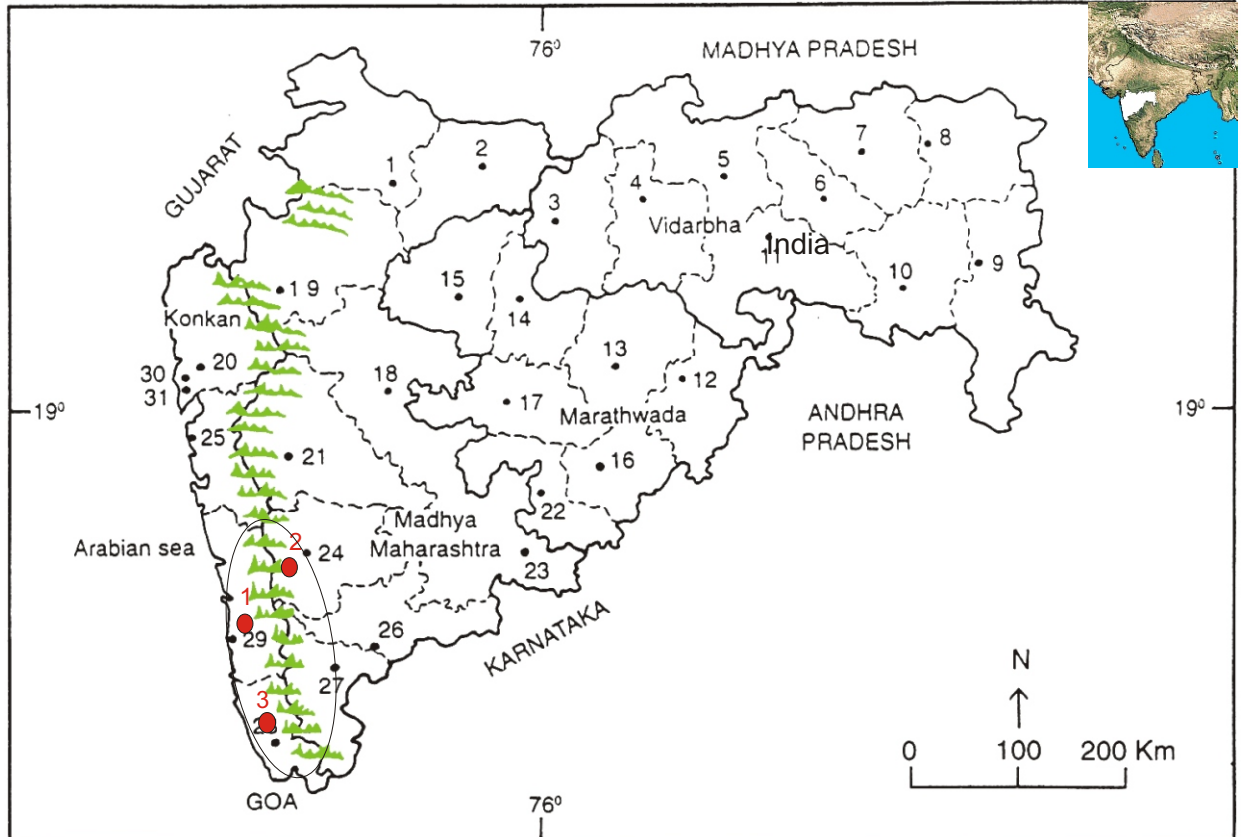
Family Code: 39

Species code: 45 -2E

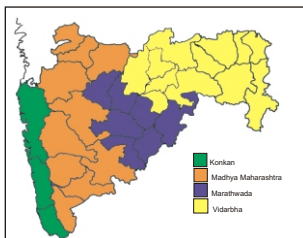
Naoroji Godrej Centre for Plant Research

Senecio edgeworthii Hook f.

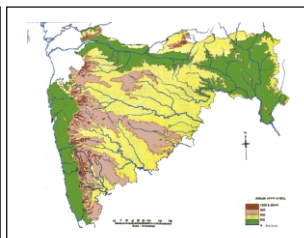
Location map



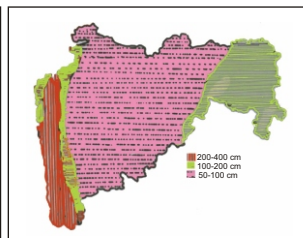
1.Dhule 2.Jalgaon 3. Buldhana 4.Akola 5.Amaravati 6.Wardha 7.Nagpur 8. Bhandara 9. Gadchiroli
10. Chandrapur 11. Yavatmal 12. Nanded 13. Parbhani 14. Jalna 15. Aurangabad 16.Latur
17. Beed 18. Ahmadnagar 19 Nashik 20. Thane 21. Pune 22. Osmanabad 23. Solapur 24.Satara
25. Raigad 26. Sangli 27. Kolhapur 28. Sindhudurg 29. Ratnagiri 30.Mumbai 31.Greater Mumbai.



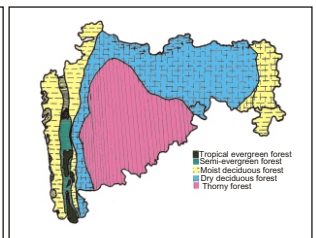
Geographical regions 1



Physical map 2



Rain fall map 3



Forest types 4

Localities in districts - ●

1. Ratnagiri, 2. Satara, 3. Sindhudurg.

Geographical distribution in Maharashtra:

Latitude (DMS): 16° 95' -16° 06' N & Longitude (DMS): 72° 58' -74° 13' E.



Haritarium

Family Code: 39

Species code: 45 -2F

Naoroji Godrej Centre for Plant Research

Senecio edgeworthii Hook f.

References:

- Cooke, T. (1904): **The Flora of Presidency of Bombay**. Vol.2: 109. (rep. Ed.1958).
- Hajra *et al* (1995): **Asteraceae: Fl. India** 13: 250.
- Hooker, J.D. *et al.*(1883): **The flora of British India**. London. Vol.3: 346.
- Rao , R.R. *et al.*(1988): *Florae Indicae Enumeratio-Asteraceae*. BS.I.:68.
- Singh N.P. & S. Karthikeyan (2001): **Flora of Maharashtra state- Dicotyledones** Vol. 2. B.S.I. India, Calutta: 239.
- Tetali, *et al.* (2000): **Endemic Plants of India (A Status Report of Maharashtra State)**. Naoroji Godrej Centre for Plant Research, Shirwal: 55.
- Yadav, S.R.(1997): Endemic plants of peninsular India with special reference to Maharashtra, in Pokle D.S., S.P. Kanir & V.N. Naik (eds.) **Proceedings, VII IAAT Annual Meet and National Conference**, Aurangabad:42.