



**Haritarium**

Family Code: 300

Species code: 4 - 2A

**Naoroji Godrej Centre for Plant Research**

**Sonerila scapigera Dalzell**

**Botanical name:** *Sonerila scapigera* Dalzell

**Family :** Melastomaceae

**Threatened category:** Not evaluated (Gaikwad & Yadav, 2004).

**Key characters:** Stem absent, Leaves small, petals 3, seeds small, numerous

**Description:** A small stemless herb, 10-15 cm. long. Leaves often tinged with purple, radical, ovate or ovate-oblong, , obtuse or subacute, minute crenate-serrate, glabrous on both sides or sometimes minutely glandular-puberulous, base cordate; Petioles 4-6 cm., Flowers 4-10, subumbellate; flowering scapes 3-7 cm long; calyx funnel shaped, obscurely 3 sulcate; teeth short, triangular acute deciduous. Petal ink coloured. 1.5 – 2 cm. long. Stamens 3, anthers yellow. Capsule included in the calyx tube, 3 gonous. Seeds numerous, without raised points.

**Flowering and fruiting:** July - August.

**Distribution:** India – Endemic to Western Ghats.

**Localities:** Pune (Khandala, Lonavala, Mulshi, Sinhagad,), Raigad, Ratnagiri, Satara, Sidhudurg, Thane

**Ecology:** In higher ghats, wet places on vertical rocks. Altitude ranges between 600-1200m above sea level.

**Association:** No specific plant association is observed, but shares the same habitat with Moss and other Bryophytes.



**Haritarium**

Family Code: 300

Species code: 4 - 2B

**Naoroji Godrej Centre for Plant Research**

***Sonerila scapigera* Dalzell**



1.Habit, 2.Inflorescence, 3.Flower, 4. Leaf- dorsal view, 5.Leaf- ventral view, 6. Capsule, 7.Anthers.



**Haritarium**

Family Code: 300

Species code: 4 - 2C

**Naoroji Godrej Centre for Plant Research**

***Sonerila scapigera* Dalzell**







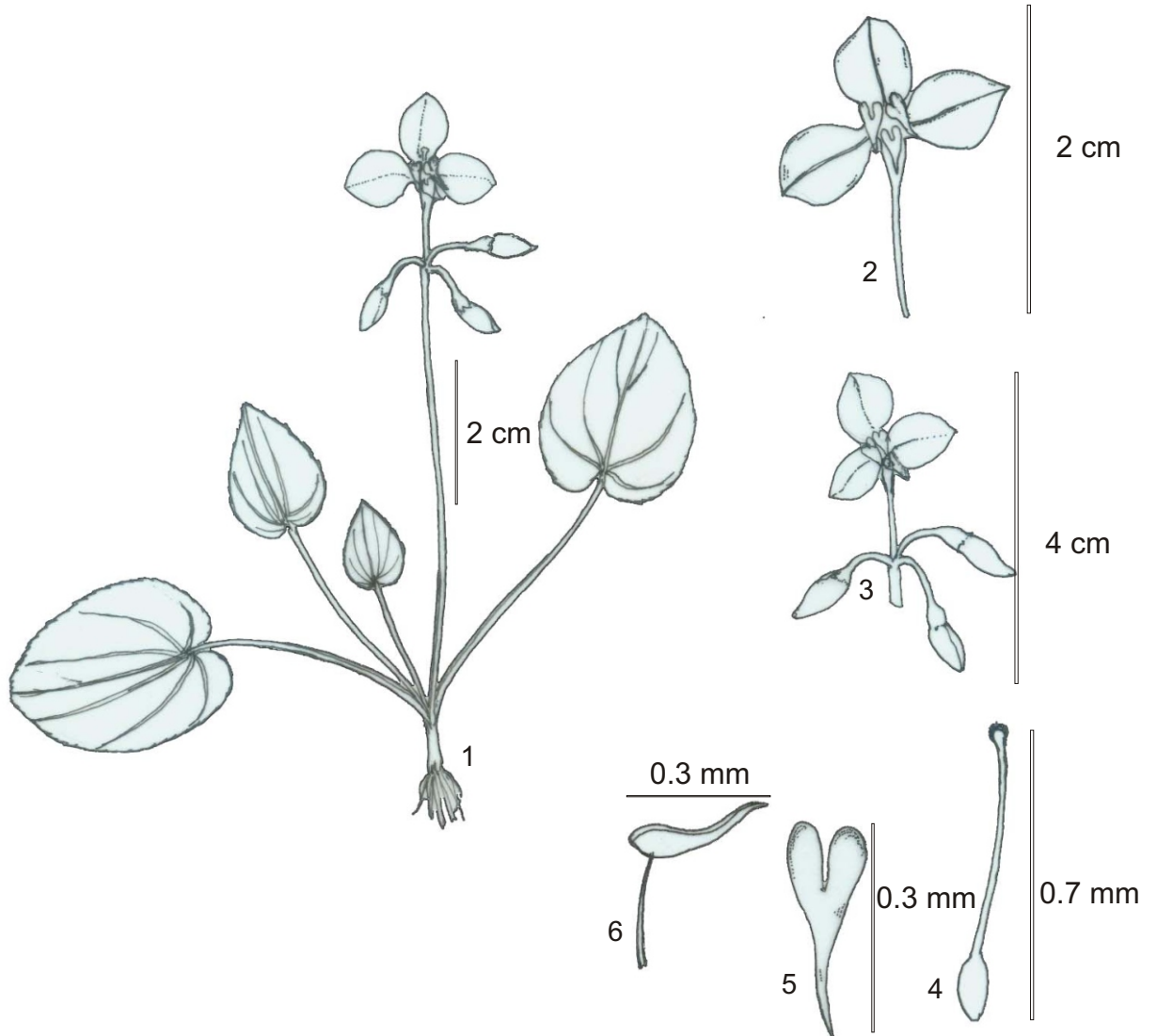
**Haritarium**

Family Code: 300

Species code: 4 - 2D

**Naoroji Godrej Centre for Plant Research**

***Sonerila scapigera* Dalzell**



1.Habit, 2.Flower, 3.Inflorescence, 4. Stigma 5.Anther-upper view, 6.Anther -Side view.



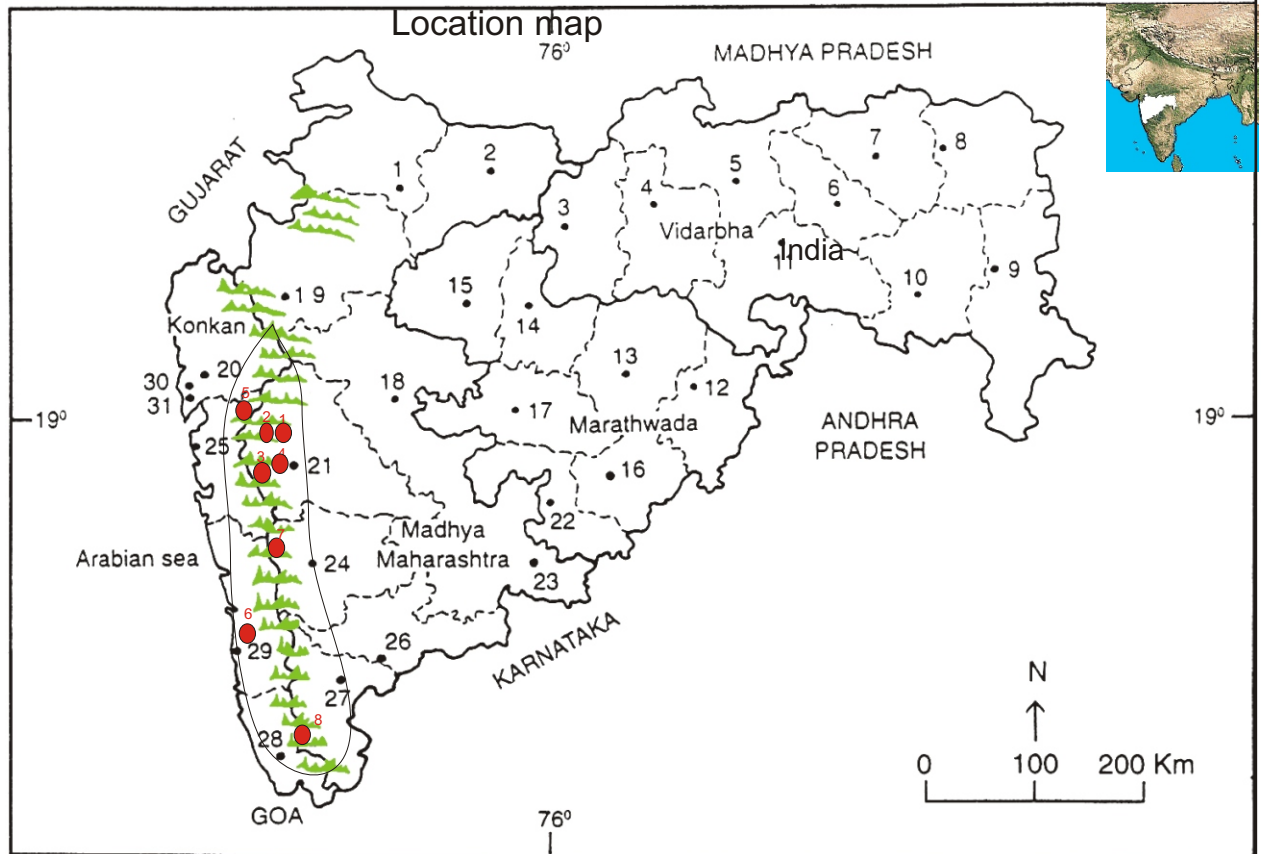
**Haritarium**

Family Code: 300

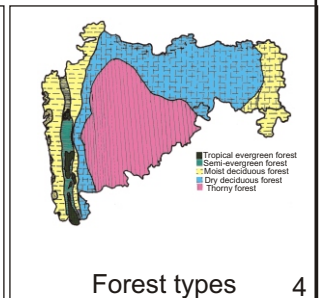
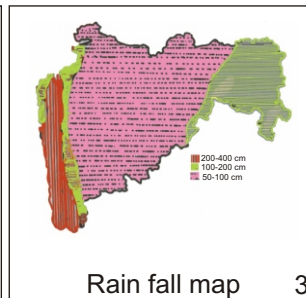
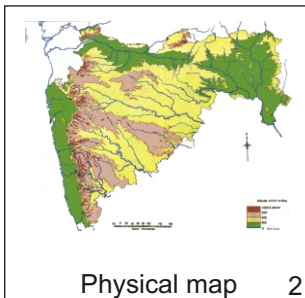
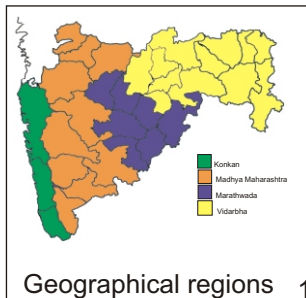
Species code: 4 - 2E

**Naoroji Godrej Centre for Plant Research**

**Sonerila scapigera Dalzell**



1. Dhule 2. Jalgaon 3. Buldhana 4. Akola 5. Amaravati 6. Wardha 7. Nagpur 8. Bhandara 9. Gadchiroli  
 10. Chandrapur 11. Yavatmal 12. Nanded 13. Parbhani 14. Jalna 15. Aurangabad 16. Latur  
 17. Beed 18. Ahmadnagar 19. Nashik 20. Thane 21. Pune 22. Osmanabad 23. Solapur 24. Satara  
 25. Raigad 26. Sangli 27. Kolhapur 28. Sindhudurg 29. Ratnagiri 30. Mumbai 31. Greater Mumbai.



Localities- ●

A. Pune (1-Khandala, 2-Lonavala, 3-Mulshi, 4-Sinhagad), B. Raigad (5-Matheran),  
 C. Ratnagiri (6-Ratnagiri), D. Satara (7-Mahabaleshwar), E. Sindhugurg (8-Amboli),

Geographical distribution:

Latitude (DMS): Between 19° 58' - 16° 95' N & Longitude (DMS): 72° 58' - 73° 43' E;



**Haritarium**

Family Code: 300

Species code: 4 - 2F

**Naoroji Godrej Centre for Plant Research**

**Sonerila scapigera Dalzell**

**References:**

Cooke, T. (1904): **The Flora of Presidency of Bombay**. Vol.1: 533. (rep. Ed.1958).

Hooker, J.D. *et al.* (1879): **The flora of British India**. London. Vol.2: 538.

Singh N.P. & S. Karthikeyan (2000): (eds), **Flora of Maharashtra state, Dicotyledones**. Vol. 2: . B.S.I., Calcutta:28.

Tetali, *et al.* (2000): **Endemic Plants of India ( A Status Report of Maharashtra State)**. Naoroji Godrej Centre for Plant Research, Shirwal: 32.