



Haritarium

Family Code: 1

Species code: 31 - 1A

Naoroji Godrej Centre for Plant Research

Strobilanthes scrobiculata Dalzell ex Clarke

Botanical name: *Strobilanthes scrobiculata* Dalzell ex Clarke
(=*Sushpa scrobiculata* (Dalz. ex C.B. Clarke) Suryanarayan)

Vernacular name: -

Family : Acanthaceae

Threatened category: **Vulnerable** (Gaikwad & Yadav, 2004)

Key characters: Corolla lobes 5, sub equal. Linear lipped style. Stamens four.
Ovules 2 in each cell,

Description: Medium sized shrubs. Leaves 5.0 -7.5 x 2.0-2.5 cm, ovate, elliptic-lanceolate, unequal sided, apex acuminate, densely lineolate, more prominent on the upper side, otherwise nearly glabrous, base tapering, fall off before blooming except a few remain at the tip of the branches,. Flowers blue in numerous sessile spikes on naked branches from axils of fallen leaves. Stamen 4, filaments glabrous, anthers apiculate, obtuse at the base. Capsules c 1 cm long, lanceolate, acute, 4-sided. Seeds 0.25-0.3 cm long, ovoid, subacute, hygroscopic ally hairy and with dense fringe on margin.

Flowering and fruiting: November – March, with intervals of some years.

Distribution: India - Endemic to Maharashtra, Karnataka.

Reported Localities: Ratnagiri, Satara, Sindhudurg.

Ecology: Grows gregariously on steep slopes near large boulders and rocky crevices. Prefer open areas. Occurs between 800 -1200 m altitude.

Association: No specific plant association is observed.



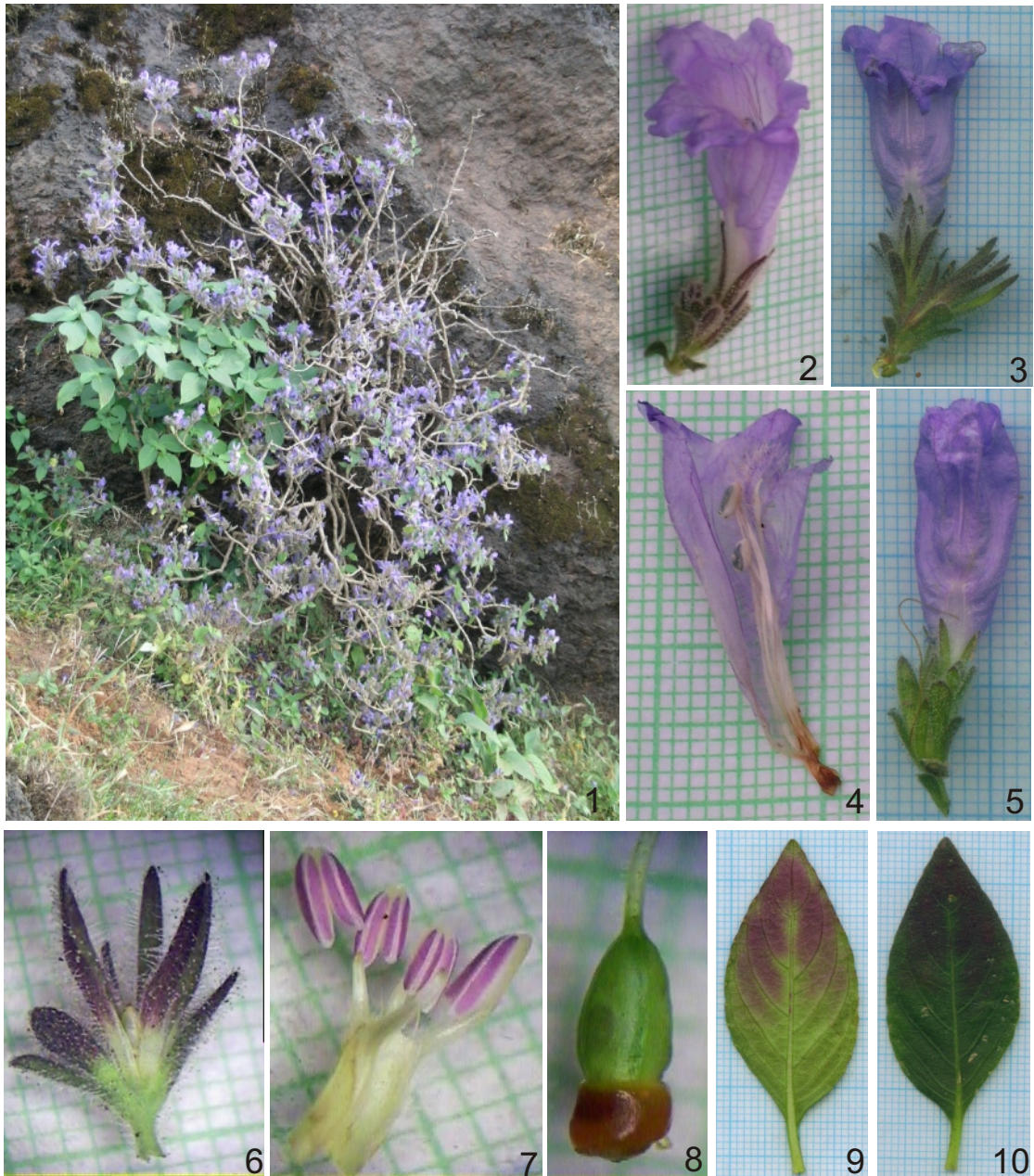
Haritarium

Family Code: 1

Species code: 31 - 1B

Naoroji Godrej Centre for Plant Research

***Strobilanthes scrobiculata* Dalzell ex Clarke**



1.Habit 2.&3.Flower, 4.Dissected flower, 5. Flower bud, 6.Floral bracts, 7. Anthers. 8. Gynoecium, 9. Leaf- Dorsal view, 10.Leaf- ventral view.



Haritarium

Family Code: 1

Species code: 31 - 1C

Naoroji Godrej Centre for Plant Research

***Strobilanthes scrobiculata* Dalzell ex Clarke**





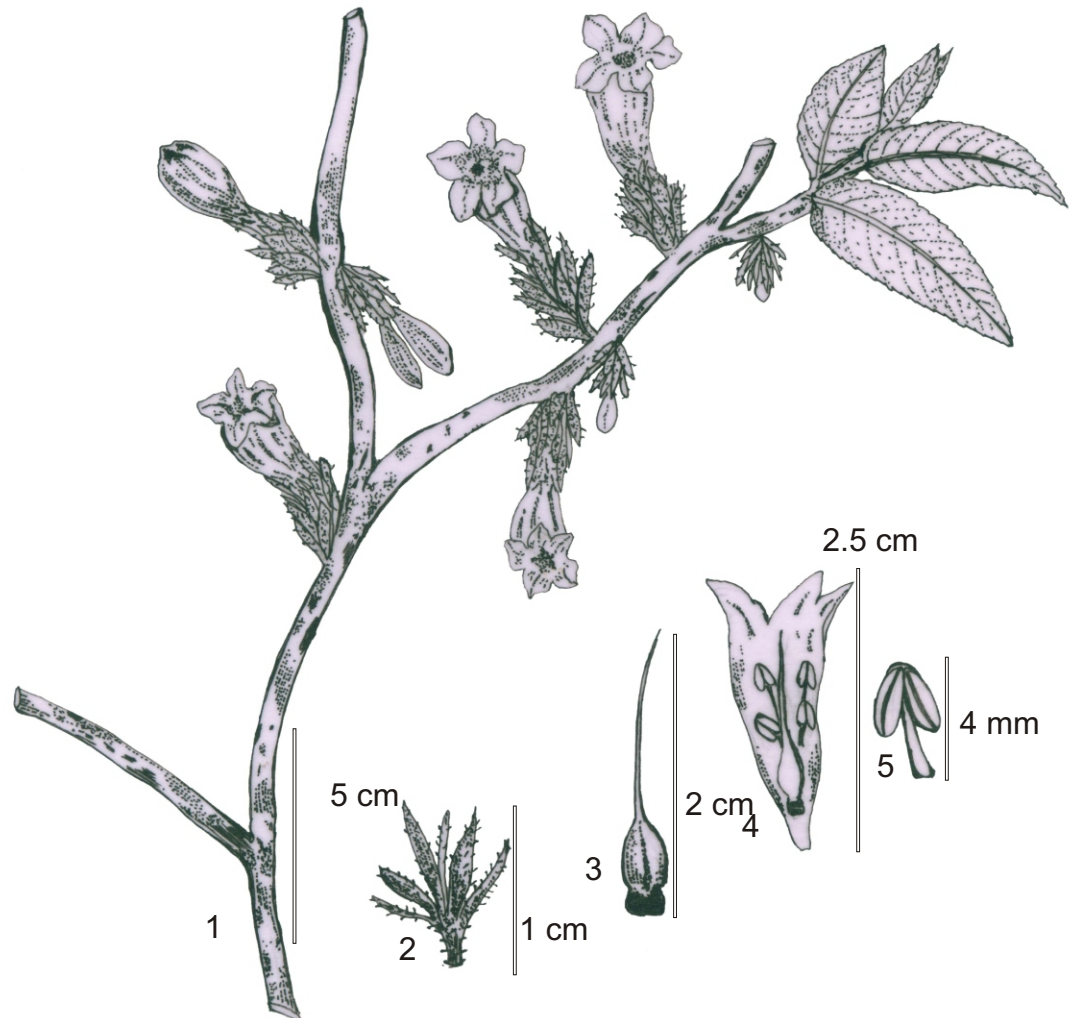
Haritarium

Family Code: 1

Species code: 31 - 1D

Naoroji Godrej Centre for Plant Research

***Strobilanthes scrobiculata* Dalzell ex Clarke**



1. Habit, 2. Bract, 3. Gynoecium, 4. Dissected flower, 5. Anther.



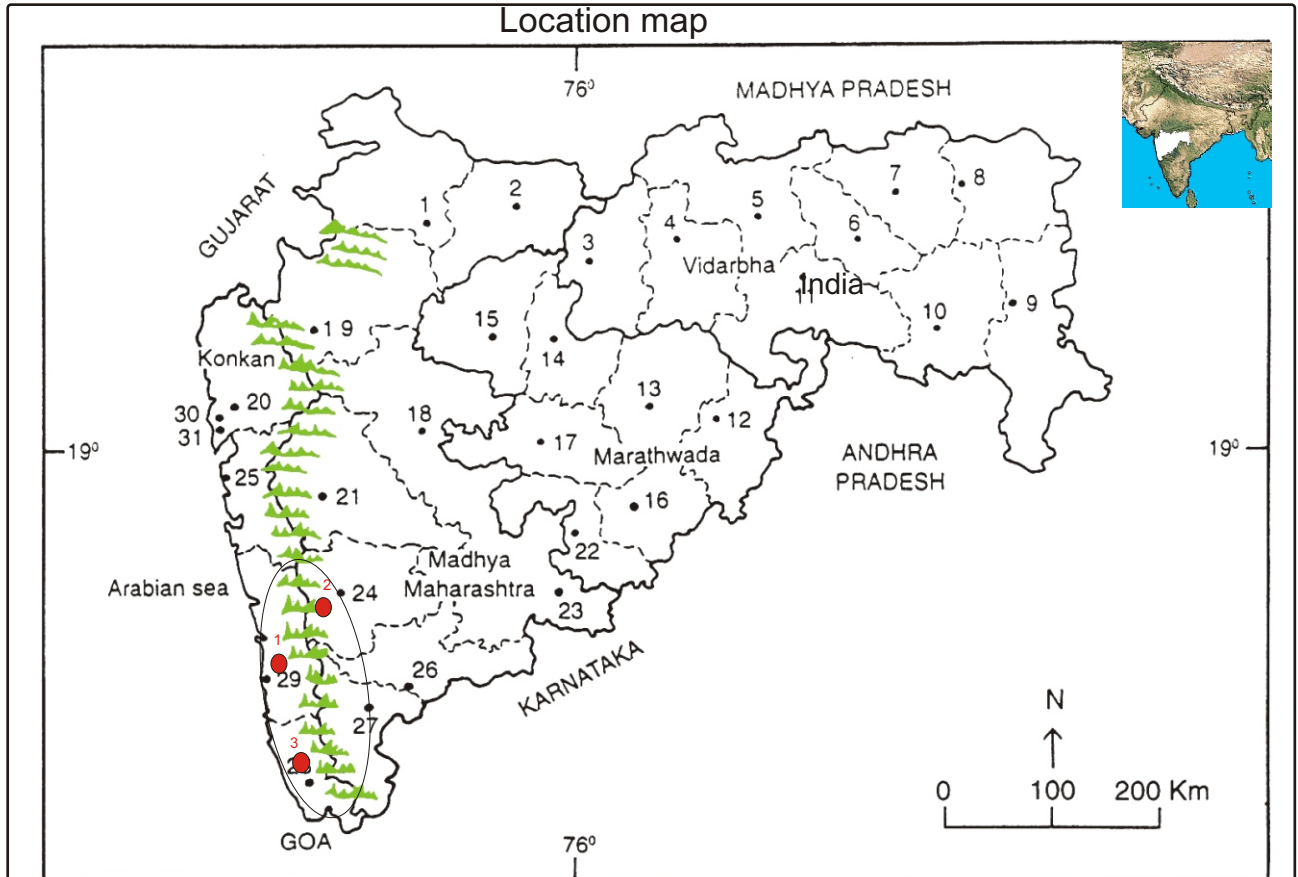
Haritarium

Family Code: 1

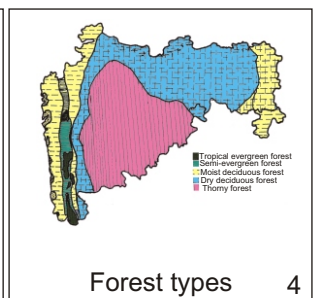
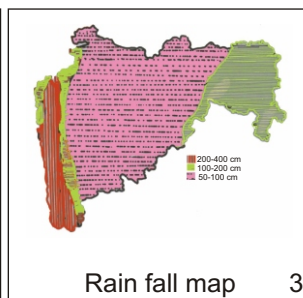
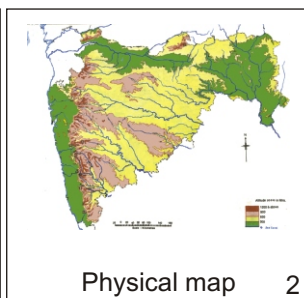
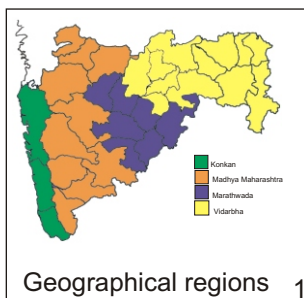
Species code: 31 - 1E

Naoroji Godrej Centre for Plant Research

***Strobilanthes scrobiculata* Dalzell ex Clarke**



1. Dhule 2. Jalgaon 3. Buldhana 4. Akola 5. Amaravati 6. Wardha 7. Nagpur 8. Bhandara 9. Gadchiroli
 10. Chandrapur 11. Yavatmal 12. Nanded 13. Parbhani 14. Jalna 15. Aurangabad 16. Latur
 17. Beed 18. Ahmadnagar 19. Nashik 20. Thane 21. Pune 22. Osmanabad 23. Solapur 24. Satara
 25. Raigad 26. Sangli 27. Kolhapur 28. Sindhudurg 29. Ratnagiri 30. Mumbai 31. Greater Mumbai.



Localities- ●

1. Ratnagiri, 2. Satara, 3. Sindhudurg.

Geographical distribution:

Latitude (DMS): Between 17° 58' - 16° 95' N & Longitude (DMS): 72° 58' - 74° E;



Haritarium

Family Code: 1

Species code: 31 - 1F

Naoroji Godrej Centre for Plant Research

Strobilanthes scrobiculata Dalzell ex Clarke

References:

Cooke. T (1904): **Flora of Presidency of Bombay**. Vol.2: 446.(rep. Ed.1967)

Gaikwad S.P. & S.R. Yadav(2004): in T. Pullaiah (ed.)Endemic flowering plant species of Maharashtra and their possible utilization; **Biodiversity in India**, Regancy publications, New Delhi:47.

Hooker, J.D. *et al.*(1872):**The flora of British India**. London. Vol.4: 445.

Singh N.P. & S. Karthikeyan (2000):(eds), **Flora of Maharashtra state, Dicotyledones**.Vol. 2: . B.S.I., Calcutta:673

Tetali, P. *et al.* (2000): **Endemic Plants of India (A Status Report of Maharashtra State)**. Naoroji Godrej Centre for Plant Research, Shirwal: 43.