



**Haritarium**

Family Code: 204

Species code: 2 -4A

**Naoroji Godrej Centre for Plant Research**

**Swertia densifolia (Griseb.) Kashyapa**

**Botanical name:** *Swertia densifolia* (Griseb.) Kashyapa  
(=*Ophelia densifolia* Griseb., *Swertia decussate* Nimmo ex cl.)

**Vernacular name:** Kadavi, Kadu

**Family :** Gentianaceae

**Threatened category:** Not evaluated (Gaikwad & Yadav, 2004).

**Key characters:** Terrestrial herbs, leaves opposite, corolla lobes contorted in bud, ovary one celled, stigma not capitate, nectary 1, at the base of each petal, without covering scale.

**Description:** Erect herbs, densely leafy. Stems erect, more or less 4-winged. Leaves opposite, broadly ovate, sessile, approximately decussate. 3-5 nerved. Flowers 0.8 -1.0 cm long sometimes in dense corymbose cymes. Bracts foliaceous 3-nerved. Corolla white with blue veins; lobes with a yellow circular pit at the base fringed all round with rather long scaly fimbriate. Filaments dilated, connate at the base, flattened. Capsules ovoid, beaked, 2- valved 0.6 -1.0 cm long,. Seeds minute, many, dark brown.

**Flowering and fruiting:** December- January.

**Distribution:** India – Endemic to peninsular India.

**Reported Localities in districts:** Kolhapur, Pune, Satara.

**Ecology:** Occasionally seen growing on open hill slopes and grazing lands in large patches. Altitude ranges between 600-900m above sea level.

**Association:** No specific plant association is observed.



**Haritarium**

Family Code: 204

Species code: 2 -4B

**Naoroji Godrej Centre for Plant Research**

***Swertia densifolia* (Griseb.) Kashyap**



1. Habitat, 2. Inflorescence, 3.& 4. Single flower, 5. Dissected flower, 6. Leaf -Dorsal view, 7. Leaf - Ventral view.



**Haritarium**

Family Code: 204

Species code: 2-4C

**Naoroji Godrej Centre for Plant Research**

**Swertia densifolia (Griseb.) Kashyapa**





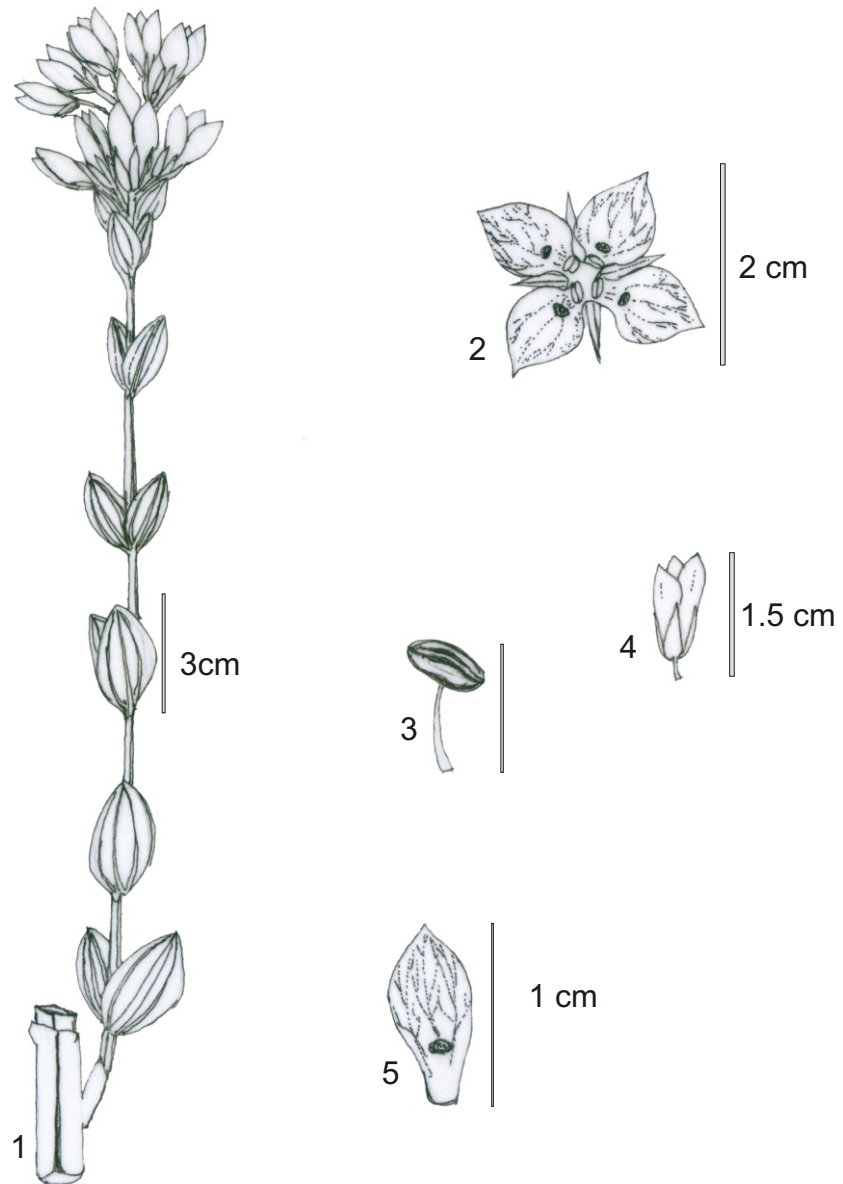
**Haritarium**

Family Code: 204

Species code: 2 -4C

**Naoroji Godrej Centre for Plant Research**

***Swertia densifolia* (Griseb.) Kashyap**



1.Habit, 2. Flower, 3. Bud, 4. Anther, 5. Corolla



**Haritarium**

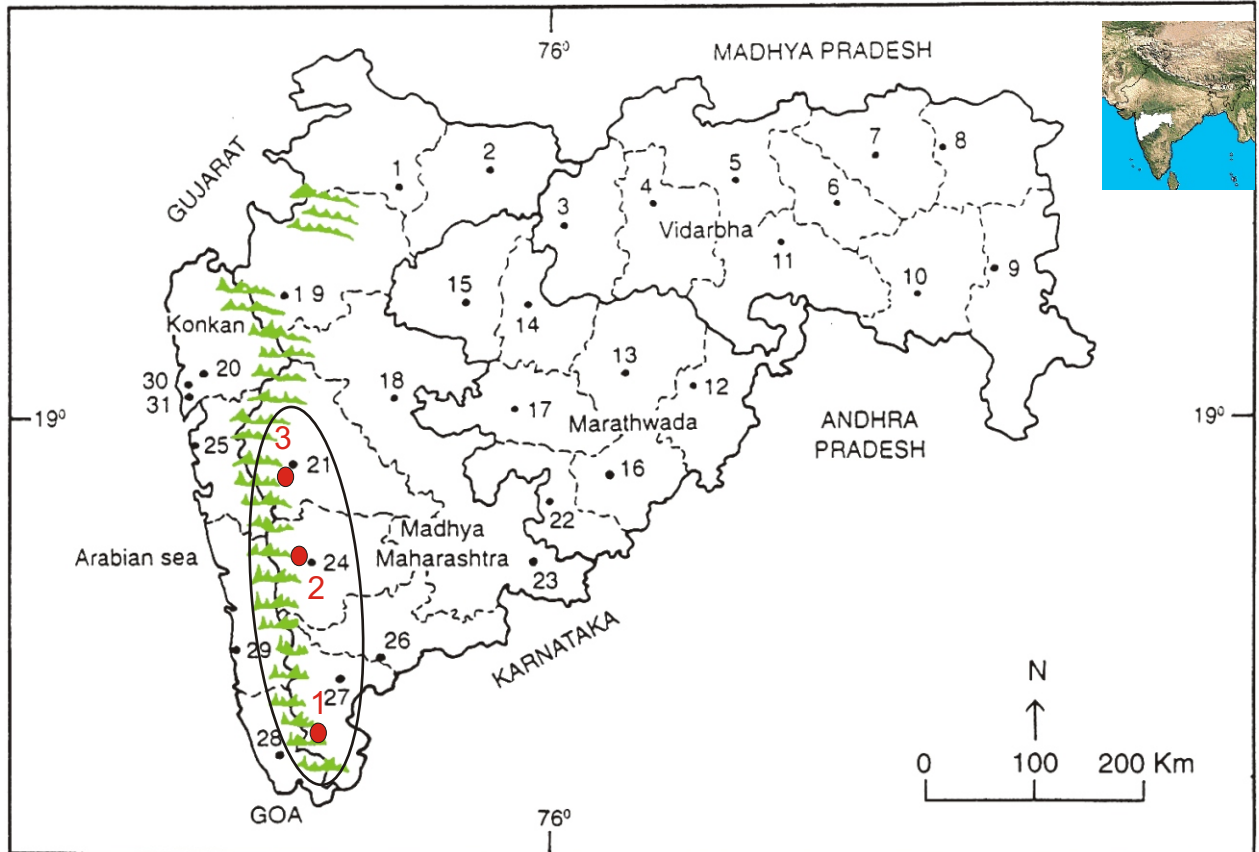
Family Code: 204

Species code: 2 -4E

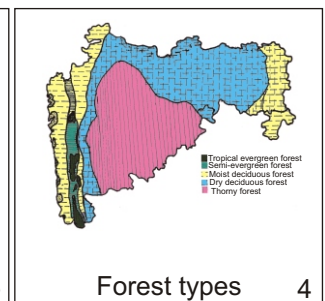
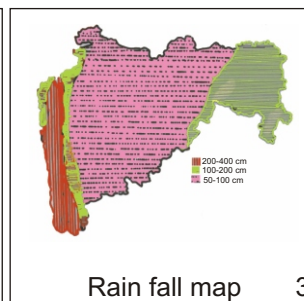
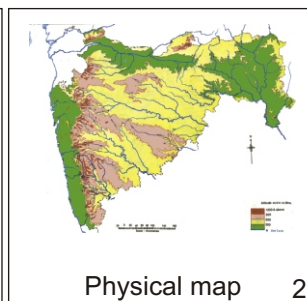
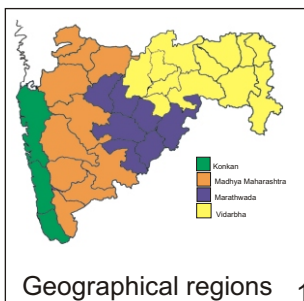
**Naoroji Godrej Centre for Plant Research**

**Swertia densifolia (Griseb.) Kashyap**

Location map



1.Dhule 2.Jalgaon 3. Buldhana 4.Akola 5.Amaravati 6.Wardha 7.Nagpur 8. Bhandara 9. Gadchiroli  
10. Chandrapur 11. Yavatmal 12. Nanded 13. Parbhani 14. Jalna 15. Aurangabad 16.Latur  
17. Beed 18. Ahmadnagar 19 Nashik 20. Thane 21. Pune 22. Osmanabad 23. Solapur 24.Satara  
25. Raigad 26. Sangli 27. Kolhapur 28. Sindhudurg 29. Ratnagiri 30.Mumbai 31.Greater Mumbai.



Distribution in following districts ●

1. Kolhapur, 2. Pune, 3. Satara.

Geographical distribution in Maharashtra:

Latitude (DMS): 18° 31' - 16° 41' N & Longitude (DMS): 72° 58' - 74° 13' E.



**Haritarium**

Family Code: 204

Species code: 2 -4F

**Naoroji Godrej Centre for Plant Research**

**Swertia densifolia (Griseb.) Kashyapa**

**References:**

Cooke. T (1904): **Flora of Presidency of Bombay**. Vol.2: 259.( rep. Ed.1958)

Gaikwad S.P. & S.R. Yadav(2004): in T. Pullaiah (ed.)Endemic flowering plant species of Maharashtra and their possible utilization; **Biodiversity in India**, Regancy publications, New Delhi:44.

Hooker, J.D. *et al.*(1875):**The flora of British India**. London. Vol.4: 127.

Singh N.P. & S. Karthikeyan (2000):(eds), **Flora of Maharashtra state, Dicotyledones**.Vol. 2: . B.S.I., Calcutta: 410.

Tetali, *et al.* (2000): **Endemic Plants of India ( A Status Report of Maharashtra State)**. Naoroji Godrej Centre for Plant Research, Shirwal: 30.