



**Haritarium**

Family Code: 406

Species code: 10 - 4A

**Naoroji Godrej Centre for Plant Research**

**Thalictrum dalzellii** Hook.

**Botanical name:** *Thalictrum dalzellii* Hook.

**Vernacular name:**

**Family :** Ranunculaceae

**Threatened category:** Vulnerable.

**Key characters:** Perennial herbs. Leaves alternate. Flowers regular, sepals petaloid

**Description:** Erect herbs, up to 1m long. Stem and branches grooved, light coloured. Leaves 3-foliolate somewhat sheathing at base, uppermost usually 1-foliolate, suborbicular or reniform, margins crenately irregularly lobed and toothed; stipule free, petiole c 5 cm long, petiolules c 2.5 cm long. Flowers white, fascicled at ends of branches c 0.7 cm across, in leafy panicles; sepals 4, narrowly oblong, as long as stamens. Stamens many, filaments filiform, anthers mucous. Achenes less than 0.4 cm long, sessile or shortly stalked prominently ribbed, margined with a hooked tip.

**Flowering and fruiting:** June – September.

**Distribution:** India – Endemic to Western Ghats.

**Reported Localities:** Ahmednagar, Pune, Satara, Sindhudurg.

**Ecology:** Occasionally seen in small groups on steep hill slopes and rock crevices. Prefers to grow under the shade of bushes. Altitude ranges between 900-1200m above sea level.

**Association:** No specific plant association is observed.



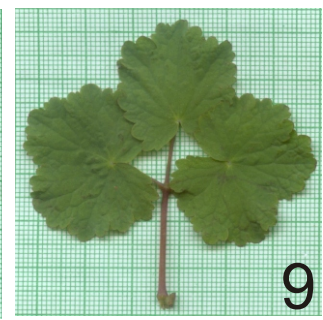
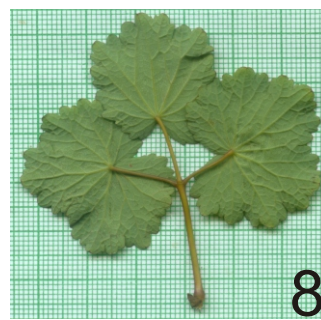
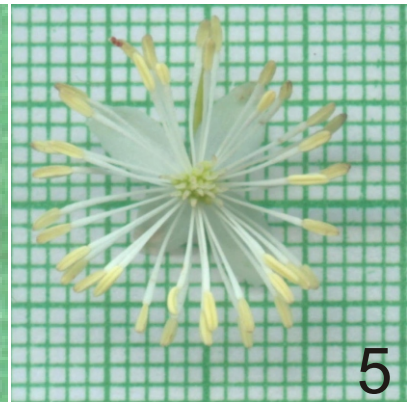
**Haritarium**

Family Code: 406

Species code: 10- 4B

**Naoroji Godrej Centre for Plant Research**

***Thalictrum dalzellii* Hook.**



1.Habitat, 2.Habit, 3,4,5. & 6. Inflorescence, 7. Stipule, 8.Leaf-ventral view, 9. Leaf-dorsal view.



**Haritarium**

Family Code: 406

Species code: 10 - 4C

**Naoroji Godrej Centre for Plant Research**

***Thalictrum dalzellii* Hook.**





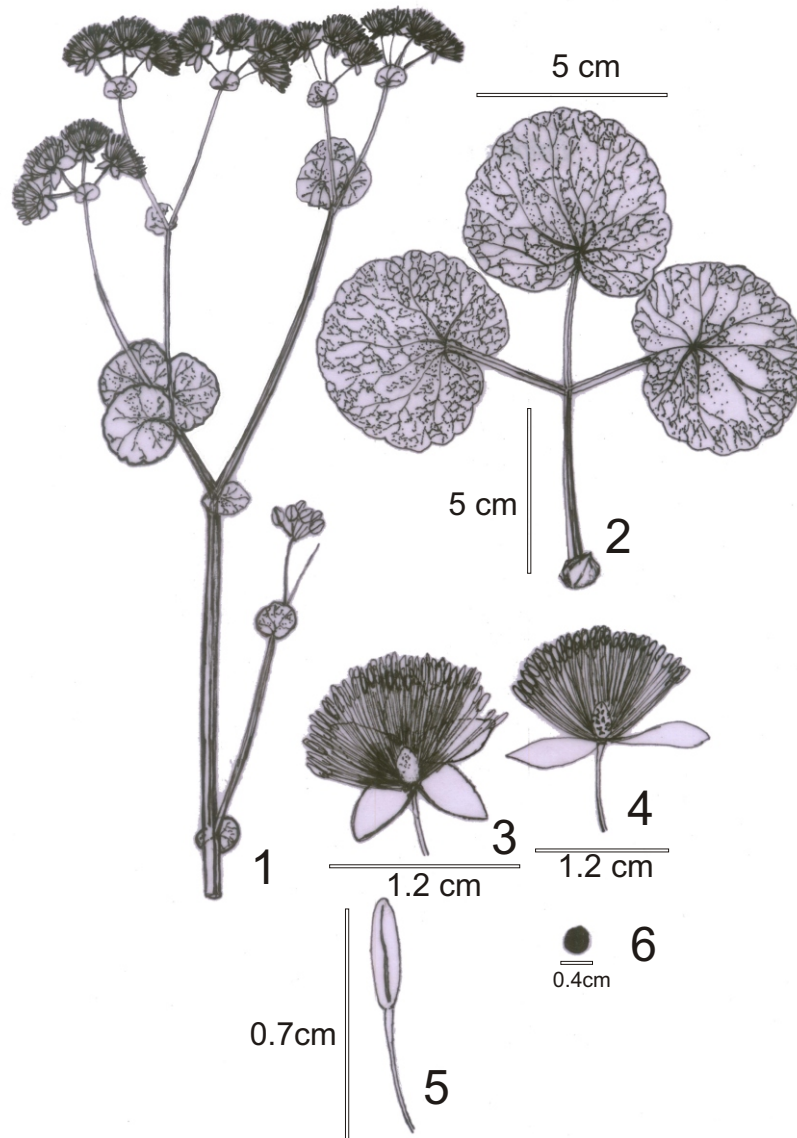
**Haritarium**

Family Code: 406

Species code: 10 - 4D

**Naoroji Godrej Centre for Plant Research**

***Thalictrum dalzellii* Hook.**



1. Flowering branch, 2. Leaf, 3. & 4. Flower, 5. Anther, 6. Seed.



# Haritarium

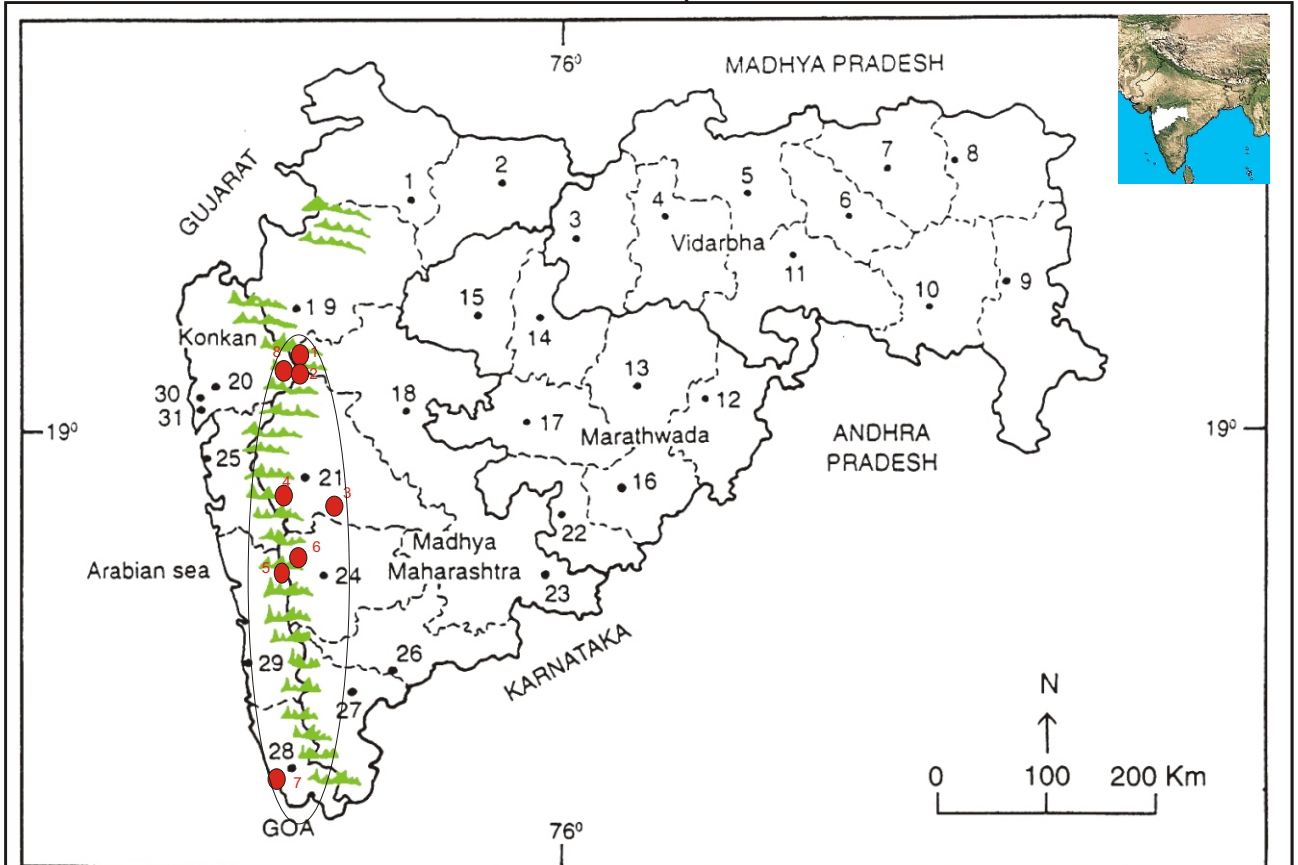
Family Code: 406

Species code: 10 - 4E

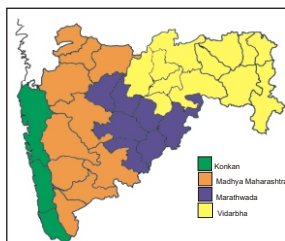
## Naoroji Godrej Centre for Plant Research

### *Thalictrum dalzellii* Hook.

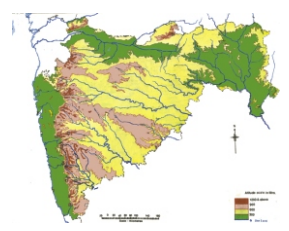
#### Location map



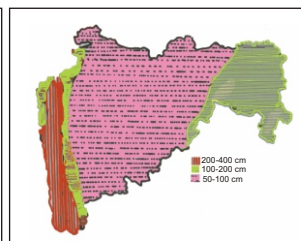
1.Dhule 2.Jalgaon 3. Buldhana 4.Akola 5.Amaravati 6.Wardha 7.Nagpur 8. Bhandara 9. Gadchiroli  
10. Chandrapur 11. Yavatmal 12. Nanded 13. Parbhani 14. Jalna 15. Aurangabad 16.Latur  
17. Beed 18. Ahmadnagar 19 Nashik 20. Thane 21. Pune 22. Osmanabad 23. Solapur 24.Satara  
25. Raigad. 26.Sangli. 27. Kolhapur 28. Sindhudurg 29. Ratnagiri 30.Mumbai 31.Greater Mumbai.



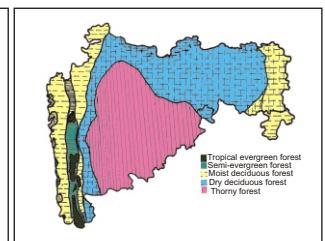
Geographical regions 1



Physical map 2



Rain fall map 3



Forest types 4

Localities- ●

A.Ahmednagar( 1.Harishchandra gad, 2.Kalsubai), B. Pune (3. Purandhar, 4. Rareshwar), C. Satara (5.Mahabaleshwar,6.Panchgani) , D.Sindhudurg. (7.Vengurla)& E. Thane (8.Harishchandra gad).

Geographical distribution:

Latitude (DMS): Between 18<sup>o</sup> 31' - 16<sup>o</sup> N & Longitude (DMS): 73<sup>o</sup> 50' - 74<sup>o</sup>.5' E;



**Haritarium**

Family Code: 406

Species code: 10 - 4F

**Naoroji Godrej Centre for Plant Research**

**Thalictrum dalzellii Hook.**

**References:**

Cooke, T. (1904): **The Flora of Presidency of Bombay**. Vol.1: 4. (rep. Ed.1958).

Hooker, J.D. *et al.* (1872): **The flora of British India**. London. Vol.1: 13.

Singh N.P. & S. Karthikeyan (2000):(eds), **Flora of Maharashtra state, Dicotyledones Vol. I**. B.S.I., Calcutta: 156.

Sharma B.D., N.P.Balakrishnan, R.R. Rao & P.K.Hajra (1993): **Flora of India**, B.S.I., Calcutta: vol.1:134.

Tetali, *et al.* (2000): **Endemic Plants of India ( A Status Report of Maharashtra State)**. Naoroji Godrej Centre for Plant Research, Shirwal: 13.