



Haritarium

Family Code: 559

Species code: 1 -1A

Naoroji Godrej Centre for Plant Research

Trithuria konkanensis S.R. Yadav & Janarth.

Botanical name: *Trithuria konkanensis* S.R. Yadav & Janarth.

Vernacular name: -

Family : Hydatellaceae

Threatened category: -

Key characters: Extremely small herb, Red, unisexual flowers.

Description: Herbs, annual, up to 1.3 cm high, green to red; roots fibrous; stems reduced. Leaves tufted, numerous, up to 1.2 X 0.08 cm, linear, flattened, and acute to apex, entire, 1-nerved, green to red. Capitula numerous, scapose, crowded among leaves; bracts 2, up to 5 X 0.6 mm, linear, 1-nerved, leaf like. Flowers unisexual, naked; male flowers solitary with red stamens, 1 per capitulum, at the centre, surrounded by female flowers; female flowers 15-20 per capitulum, each represented by a solitary pistil. Fruits up to 0.3 mm long, ovoid with three longitudinal ribs, stigmatic hairs persistent. Seeds translucent with dark tip.

Flowering and fruiting: September - October

Distribution: India – Endemic to India.

Reported Localities in districts: Sindhudurg.

Ecology: In temporarily inundated, sandy-gravelly areas & gentle hill slopes covered with small herbaceous plants.

Association: No specific plant association is observed. However, it grows in same habitat where species like *Eriocaulan* spp & *Utricularia* spp.



Haritarium

Family Code: 559

Species code: 1 -1B

Naoroji Godrej Centre for Plant Research

***Trithuria konkanensis* S.R. Yadav & Janarth.**



1.Habitat, 2. Habit, 3. Male flower with red stamen, 4. Leaves.



Haritarium

Family Code: 559

Species code: 1 -1C

Naoroji Godrej Centre for Plant Research

***Trithuria konkanensis* S.R. Yadav & Janarth.**





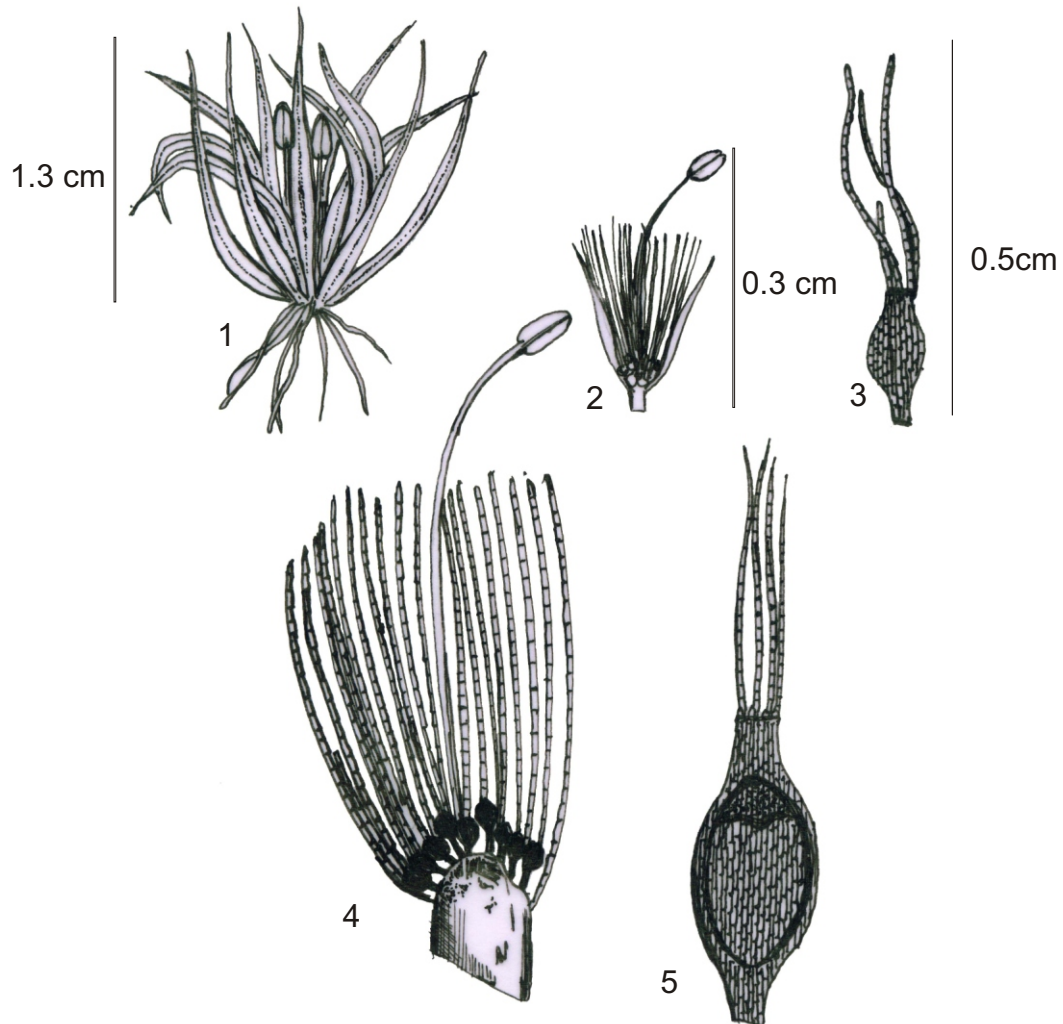
Haritarium

Family Code: 559

Species code: 1 -1D

Naoroji Godrej Centre for Plant Research

***Trithuria konkanensis* S.R. Yadav & Janarth.**



1. Habit, 2.&4. Male flower, 3. & 5. Female flower.



Haritarium

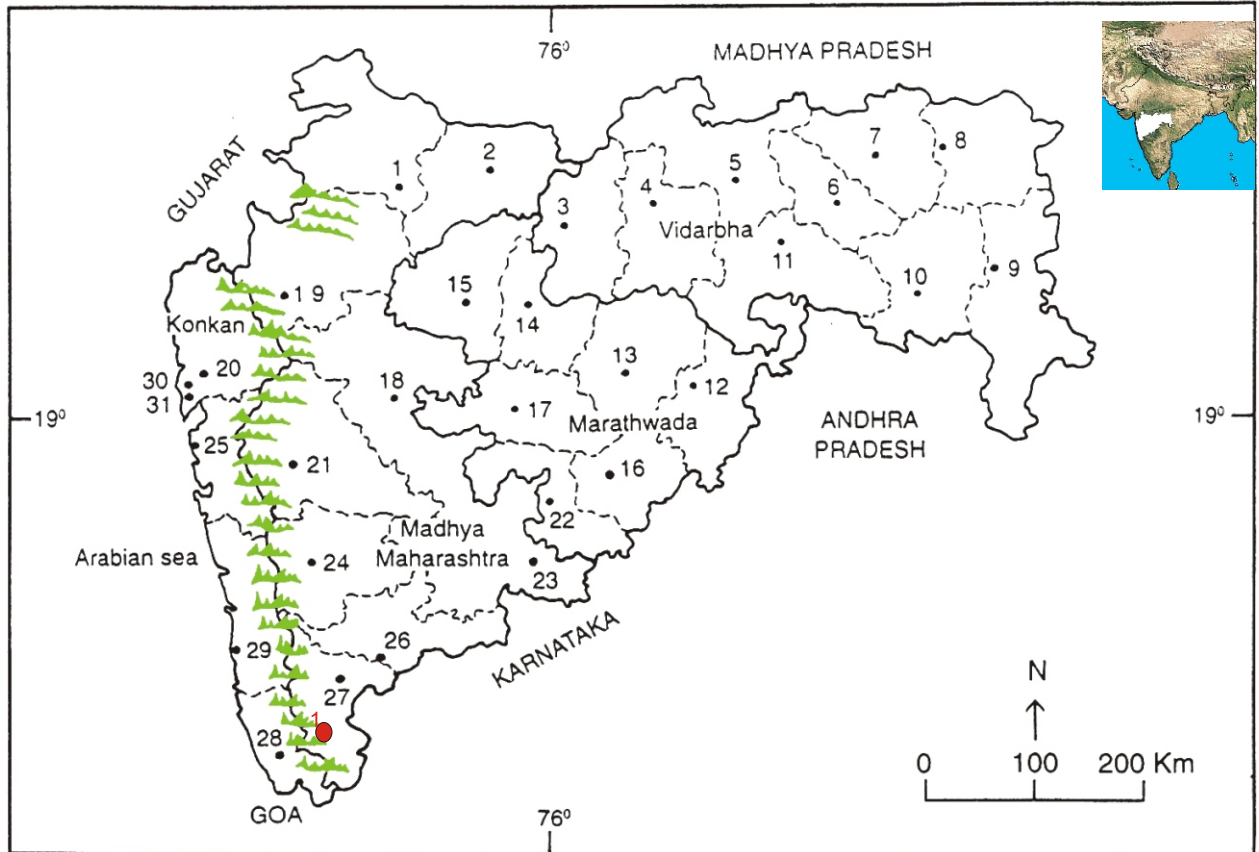
Family Code: 559

Species code: 1 -1E

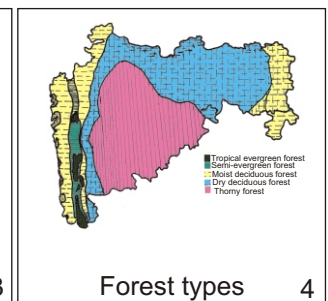
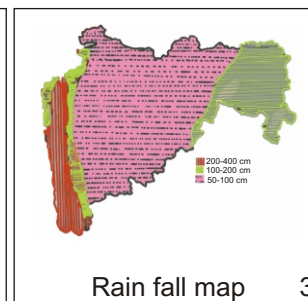
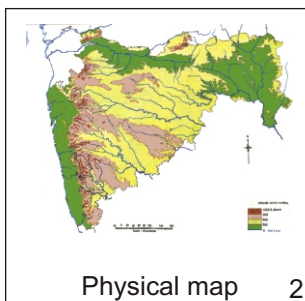
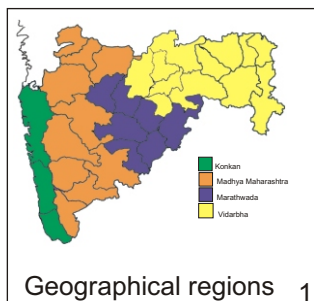
Naoroji Godrej Centre for Plant Research

Trithuria konkanensis S.R. Yadav & Janarth.

Location map



1.Dhule 2.Jalgaon 3. Buldhana 4.Akola 5.Amaravati 6.Wardha 7.Nagpur 8. Bhandara 9. Gadchiroli
10. Chandrapur 11. Yavatmal 12. Nanded 13. Parbhani 14. Jalna 15. Aurangabad 16.Latur
17. Beed 18. Ahmadnagar 19 Nashik 20. Thane 21. Pune 22. Osmanabad 23. Solapur 24.Satara
25. Sangli 26. Raigad 27. Kolhapur 28. Sindhudurg 29. Ratnagiri 30.Mumbai 31.Greater Mumbai.



Distribution in following districts ●

1. Sindhudurg.

Geographical distribution in Maharashtra:

Latitude (DMS): 19° 58' - 17° 49' N & Longitude (DMS): 72° 58' -73° E.



Haritarium

Family Code: 559

Species code: 1 -1F

Naoroji Godrej Centre for Plant Research

Trithuria konkanensis S.R. Yadav & Janarth.

References:

- Gaikwad S.P. & S.R. Yadav(2004): T. Pullaiah (ed.) Endemic flowering plant species of Maharashtra and their possible utilization; **Biodiversity in India**, Regancy publications, New Delhi:52.
- Laxminarasimhan, P.(1996): in B.D. Sharma, S. Karthikeyan & N.P.Singh (eds), **Flora of Maharashtra state, Monocot**. B.S.I., Calcutta:269.
- Singh N.P. & S. Karthikeyan (2000):(eds), **Flora of Maharashtra state, Dicotyledones**.Vol. I: . B.S.I., Calcutta:499.
- Tetali, *et al.* (2000): **Endemic Plants of India (A Status Report of Maharashtra State)**., Naoroji Godrej Centre for Plant Research, Shirwal: 75.
- Yadav, S.R.(1997): Endemic plants of peninsular India with special reference to Maharashtra, in Pokle D.S., S.P. Kanir & V.N. Naik (eds.) **Proceedings, VII IAAT Annual Meet and National Conference**, Aurangabad:47.