



Haritarium

Family Code: 276

Species code: 1 -15A

Naoroji Godrej Centre for Plant Research

Utricularia Janarthanamii S.R.Yadav, Sardesai & S.P.Gaikwad

Botanical name: *Utricularia janarthanamii* S.R.Yadav Sardesai and S.P. Gaikwad

Vernacular name: -

Family : Lentibulariaceae.

Threatened category: Not evaluated (Gaikwad & Yadav, 2004).

Key characters: Terrestrial herbs, Flowers blue to pink; Corolla included in calyx lobes; fruiting calyx lobes unequal, lower lip of corolla unigibbous at base; fruiting pedicel erect, Capsule wall uniformly membranous.

Description: Annual herbs. Leaves spatulate, 3-nerved. Flowers in racemes on peduncles and solitary on leaves and stolons. Flowers in racemes: Calyx lobes unequal. Corolla blue to pink, bigibbous; spur conical descending, acute or 2-3 dentate at apex. Flowers on stolons and leaves: Corolla hyaline, never opens; upper lip shortly 2-lobed overlaps lower lip which is shallowly lobed; spur almost absent. Capsules obliquely ovoid wall uniformly membranous. Seed numerous subglobose; testa cells more or less isodimetric.

Flowering and fruiting: July- December.

Distribution: Endemic to Maharashtra.

Reported Localities: Kolhapur, Pune.

Ecology: It grows on wet ground around lakes, tanks and in marshy rice fields. Altitude ranges between 600-900m above sea level.

Association: No specific plant association is observed.



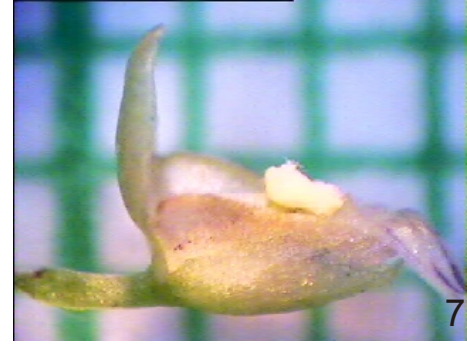
Haritarium

Family Code: 276

Species code: 1 -15B

Naoroji Godrej Centre for Plant Research

***Utricularia Janarthanamii* S.R.Yadav, Sardesai & S.P.Gaikwad**



A. Habitat, 2.- 4. Inflorescence, 5. Corolla showing prominent upper lip, 6.&7. Stamen.



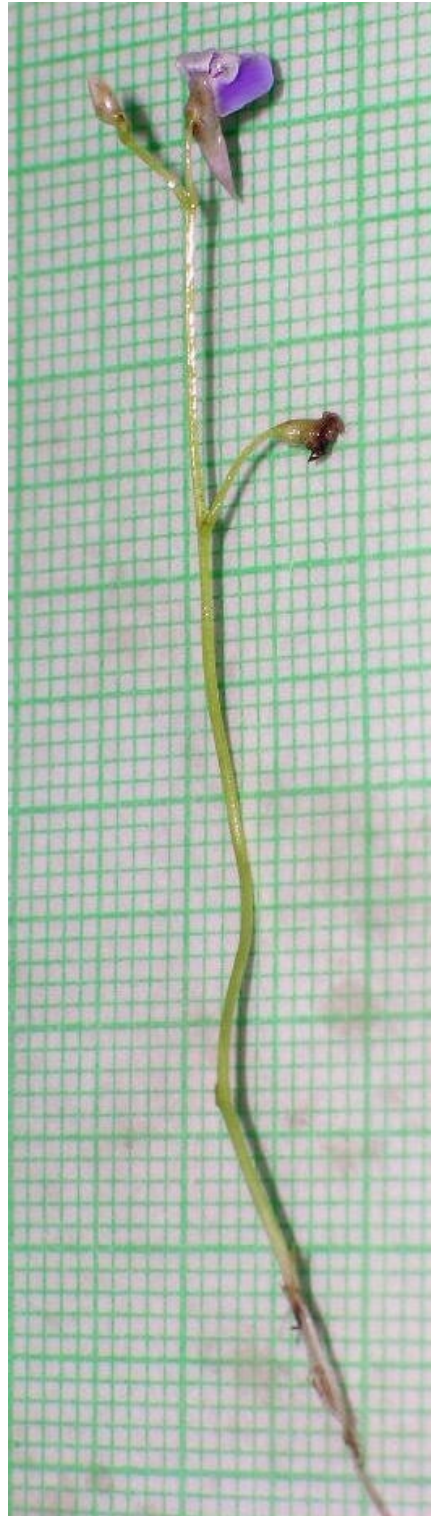
Haritarium

Family Code: 276

Species code: 1 -15C

Naoroji Godrej Centre for Plant Research

Utricularia Janarthnamii S.R.Yadav, Sardesai & S.P.Gaikwad





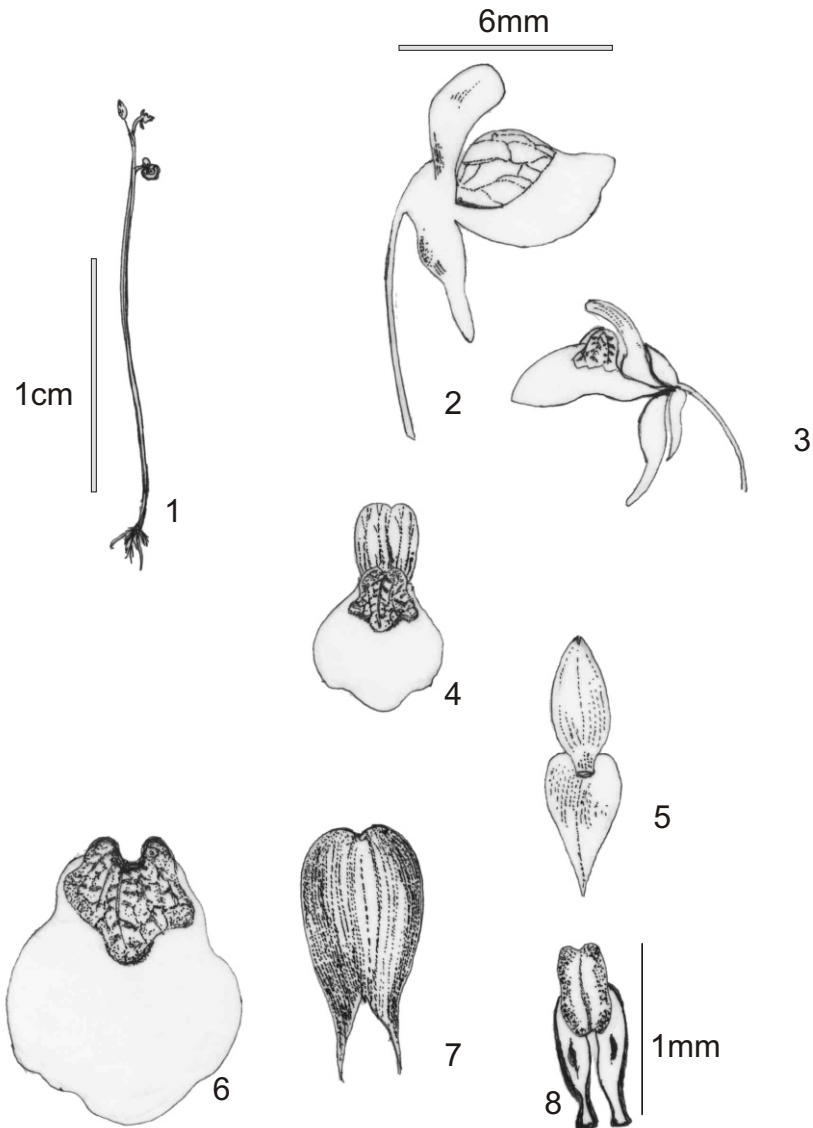
Haritarium

Family Code: 276

Species code: 1 -15D

Naoroji Godrej Centre for Plant Research

***Utricularia Janarthnamii* S.R.Yadav, Sardesai & S.P.Gaikwad**



1. Habit, 2, 3 & 4. Flower, 5. Calyx, 6. Lower lip of corolla, 7.
8. Stamen



Haritarium

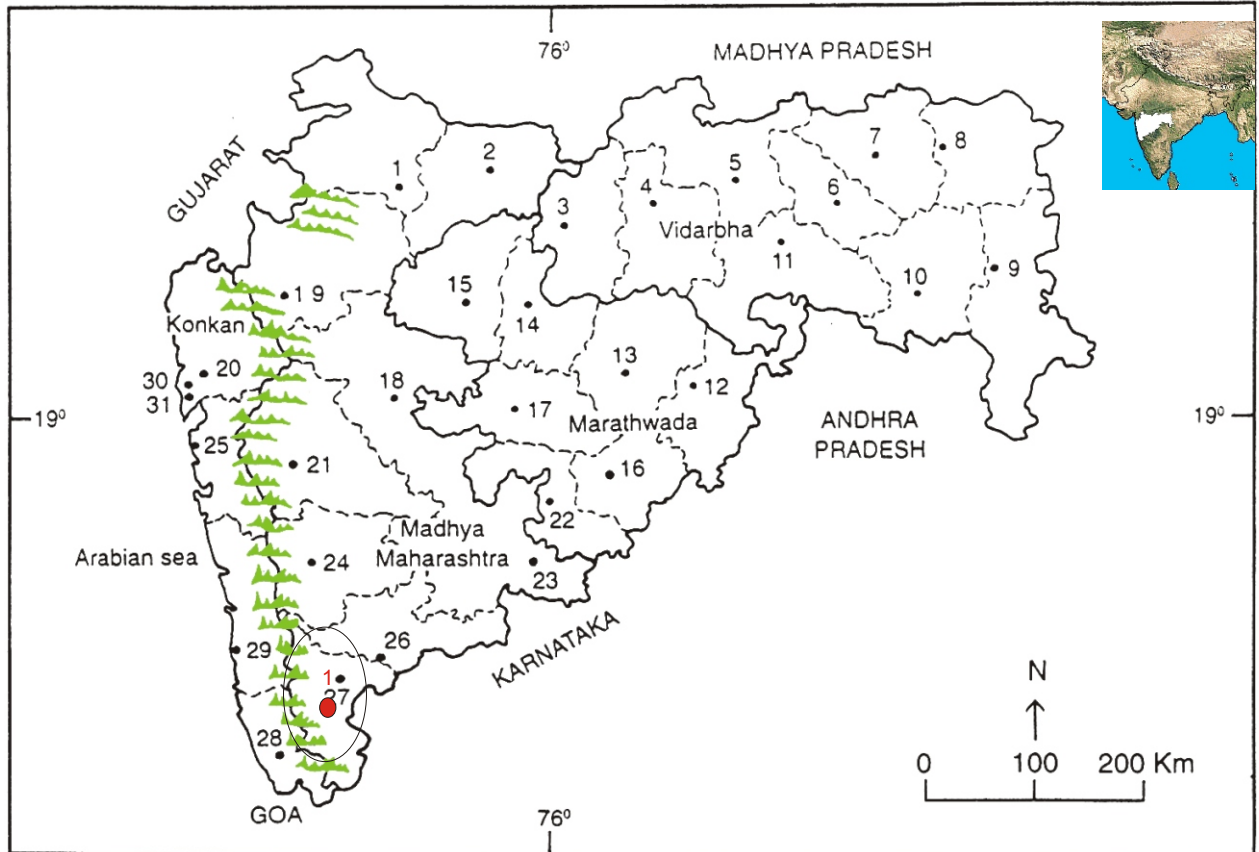
Family Code: 276

Species code: 1 -15E

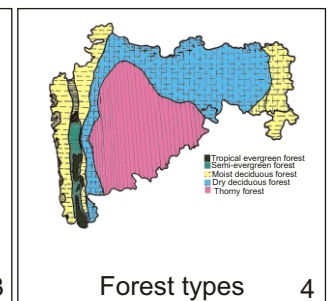
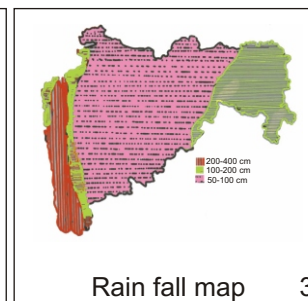
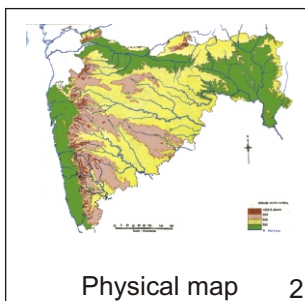
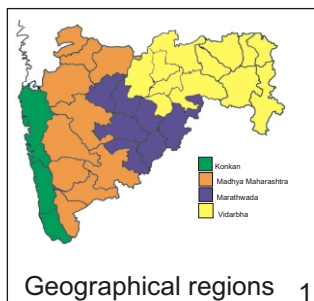
Naoroji Godrej Centre for Plant Research

Utricularia Janarthnamii S.R.Yadav, Sardesai & S.P.Gaikwad

Location map



1.Dhule 2.Jalgaon 3. Buldhana 4.Akola 5.Amaravati 6.Wardha 7.Nagpur 8. Bhandara 9. Gadchiroli
 10. Chandrapur 11. Yavatmal 12. Nanded 13. Parbhani 14. Jalna 15. Aurangabad 16.Latur
 17. Beed 18. Ahmadnagar 19 Nashik 20. Thane 21. Pune 22. Osmanabad 23. Solapur 24.Satara
 25. Sangli 26. Raigad 27. Kolhapur 28. Sindhudurg 29. Ratnagiri 30.Mumbai 31.Greater Mumbai.



Distribution in following districts ●

1. Kolhapur.

Geographical distribution in Maharashtra:

Latitude (DMS): 16° 41' N & Longitude (DMS): 74° 13' E.



Haritarium

Family Code: 276

Species code: 1 -15F

Naoroji Godrej Centre for Plant Research

Utricularia Janarthanamii S.R.Yadav, Sardesai & S.P.Gaikwad

References:

Gaikwad S.P. & S.R. Yadav(2004): in T. Pullaiah (ed.)Endemic flowering plant species of Maharashtra and their possible utilization; **Biodiversity in India**, Regancy publications, New Delhi:45.

Yadav S.R., M. M. Sardesai & S.P. Gaikwad (2000): Rheedea 10(2):107.

Yadav S.R. and M. M. Sardesai (2002): Flora of Kolhapur district, Shivaji University Kolhapur: 337.