



Haritarium

Family Code: 276

Species code: 1 - 12A

Naoroji Godrej Centre for Plant Research

***Utricularia purpurascens* J.Graham**

Botanical name: *Utricularia purpurascens* J.Graham
(= *Utricularia arcuata* Wight)

Vernacular name:

Family : Lentibulariaceae.

Threatened category: Low risk (Gaikwad & Yadav, 2004)

Key characters: Terrestrial herbs, racemes erect, bracts basifixed; flowers purple, sepals sub equal, spurs about equaling lower lip, falcately curved, sickle shaped, linear-subulate.

Description: Herbs, up to 25cm long. Rhizoids up to 2cm long. Sparsely glandular. Leaves radical, 0.5-1.0 cm long. Flowers bluish-purple, up to 7 flowers, 0.5 -1.0 cm long. Bracts basifixed, 3 nerved, acuminate at apex pedicels recurved in fruits; Calyx lobes papillose,, lower lobe bidentate at apex. Sepal oblong-ellipsoid, rounded at both ends, minute. Corolla pink white at base, yellow in throat. . Lower lip 8-15mm across, hairy in throat. Spur 9-12mm long, sickle shaped, curved below lower lip. Stigma bilipped. Capsules subglobose, slightly compressed, enclosed in enlarged sepals 0.8 cm across.

Flowering and fruiting: August – October.

Distribution: India – Maharashtra, Rajasthan, Maharashtra, Andhra Pradesh, Karnataka and Tamil Nadu.

Localities: Ahmednagar, Kolhapur, Pune, Ratnagiri.

Ecology: Occurs on wet laterite rocks, soil covered black boulders and grassy slopes or as weed of cultivated field. Altitude ranges between 600-1200m above sea level.

Association: No specific plant association is observed, however, it shares the same habitat of *Ericaulon* spp. & *Rhamphicarpa* .



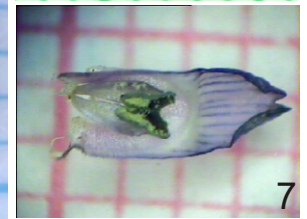
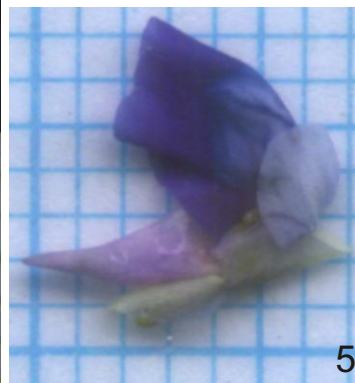
Haritarium

Family Code: 276

Species code: 1 - 12B

Naoroji Godrej Centre for Plant Research

***Utricularia purpurascens* J.Graham**



1.Habitat, 2.,4,& 5. Flower, 3. Inflorescence, 6.Dissected flower, 7. Anther



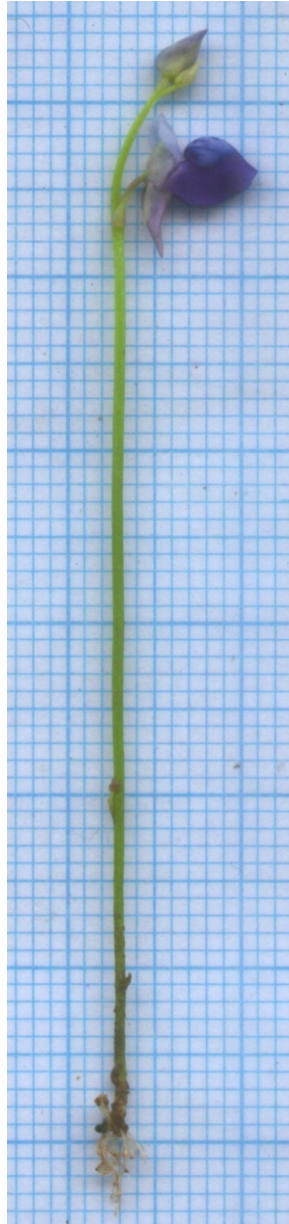
Haritarium

Family Code: 276

Species code: 1 - 12C

Naoroji Godrej Centre for Plant Research

***Utricularia purpurascens* J.Graham**





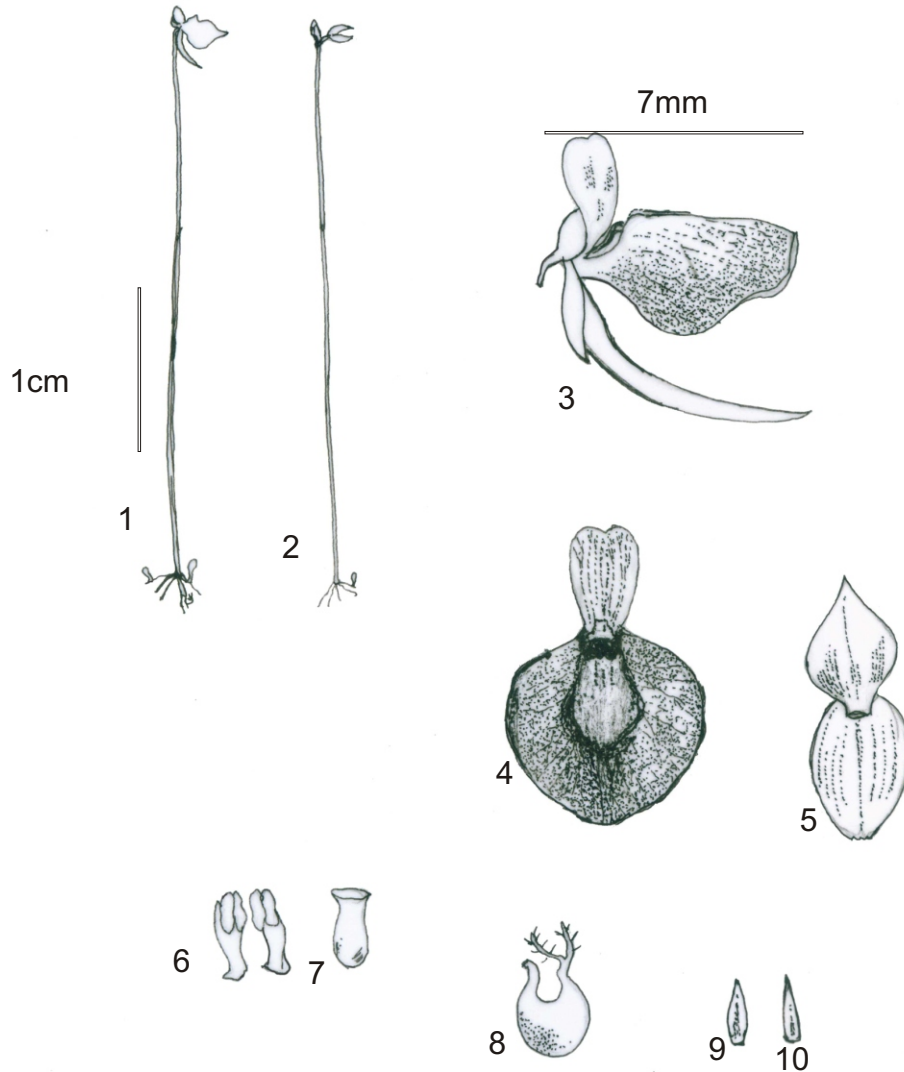
Haritarium

Family Code: 276

Species code: 1 - 12D

Naoroji Godrej Centre for Plant Research

***Utricularia purpurascens* J.Graham**



1.& 2.Habit, 3. & 4.Flower, 5. Calyx, 6.Anthers, 7. Pistil, 8.Bladder, 9, Scale, 10. Bract.



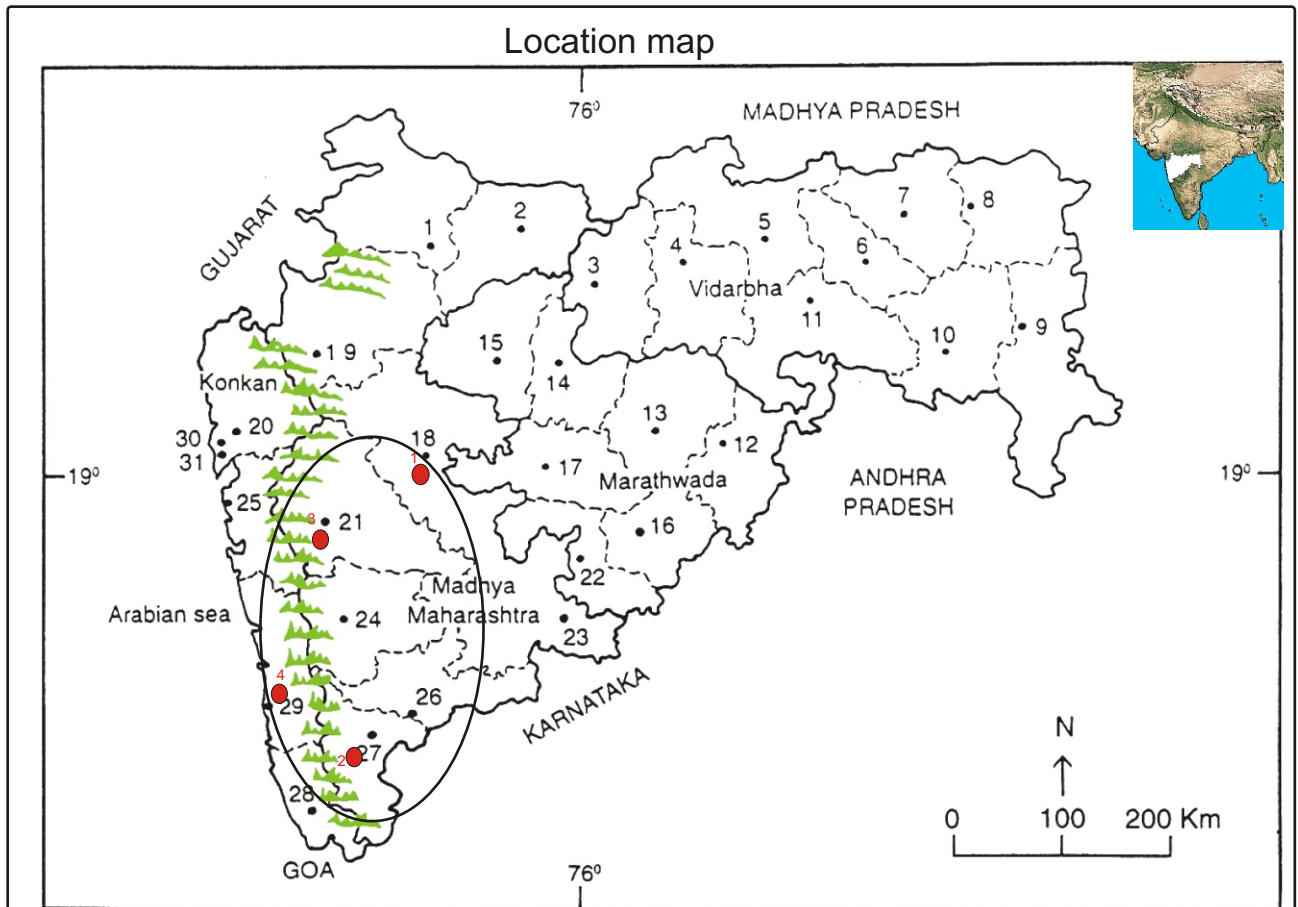
Haritarium

Family Code: 276

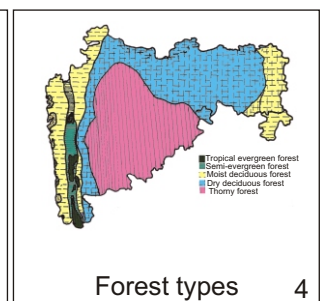
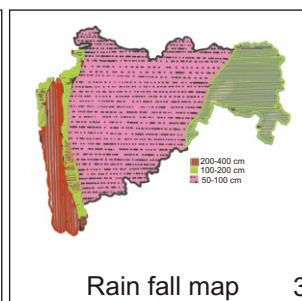
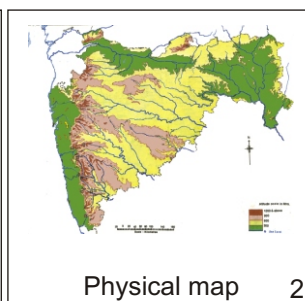
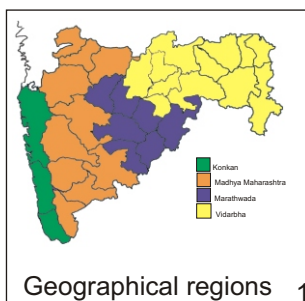
Species code: 1 - 12E

Naoroji Godrej Centre for Plant Research

Utricularia purpurascens J.Graham



- 1.Dhule 2.Jalgaon 3. Buldhana 4.Akola 5.Amaravati 6.Wardha 7.Nagpur 8. Bhandara 9. Gadchiroli
 10. Chandrapur 11. Yavatmal 12. Nanded 13. Parbhani 14. Jalna 15. Aurangabad 16.Latur
 17. Beed 18. Ahmadnagar 19 Nashik 20. Thane 21. Pune 22. Osmanabad 23. Solapur 24.Satara
 25. Raigad 26.Sangli 27. Kolhapur 28. Sindhudurg 29. Ratnagiri 30.Mumbai 31.Greater Mumbai.



Localities- ●

1. Ahmednagar, 2. Kolhapur, 3. Pune, 4. Ratnagiri

Geographical distribution in Maharashtra:

Latitude (DMS): Between 19° 95'-16° 41' N & Longitude (DMS): 73° 17'-74° 43' E.



Haritarium

Family Code: 276

Species code: 1 - 12F

Naoroji Godrej Centre for Plant Research

Utricularia purpurascens J.Graham

References:

Cooke. T (1904): **Flora of Presidency of Bombay**. Vol.2: 391.(rep. Ed.1967)

Gaikwad S.P. & S.R. Yadav(2004): in T. Pullaiah (ed.)Endemic flowering plant species of Maharashtra and their possible utilization; **Biodiversity in India**, Regancy publications, New Delhi:45.

Hooker, J.D. *et al.*(1884):**The flora of British India**. London. Vol.4: 330.

Janarthanam M.K. & A.N.Henry (1991): **Bladderworts of India** B.S.I., Calcutta:87.

Singh N.P. & S. Karthikeyan (2000):(eds), **Flora of Maharashtra state, Dicotyledones**.Vol.2: . B.S.I., Calcutta:566.